



## Multi-Sensor H.265 1080p PoE+ PTZ Camera

TV-IP460PI (v1.0R)

- One 2MP PTZ sensor
  - HD video (1920 x 1080) at 20 fps
  - Focal Length: 2.8 – 12mm
  - 4x optical zoom and 8x digital zoom
  - Intelligent 3D Zoom with Auto-Focus
  - Focal length: 2mm
- Three 2MP Fixed sensors
  - HD video (1920 x 1080) at 20 fps
- Smart IR LED for night vision up to 10m (33 ft.)
- Digital Wide Dynamic Range image balancing
- Save installation costs with Power over Ethernet (PoE)
- Program motion detection recording and email alerts
- Micro SD card slot (up to 256GB, not included)
- Free iOS® and Android™ mobile apps

TRENDnet's Multi-Sensor H.265 1080p PoE+ PTZ Camera, model TV-IP460PI, provides day and night surveillance with a night vision range of up to 10m (33 ft.). This multi-sensor HD surveillance camera features one 2MP PTZ lens with 4x optical zoom and three 2MP fixed lenses, surrounding the camera base to provide 360° of video coverage. With one surveillance camera effectively working as if it were four, the multi-sensor HD surveillance camera is best placed in the center of a room. Each camera sensor records up to 2MP HD video at 20 fps in space saving H.265 compression format. View live video of the multi-sensor HD surveillance camera from your mobile device using our free mobile apps, or from your Windows® PC with our complimentary and pro-grade desktop camera management software.



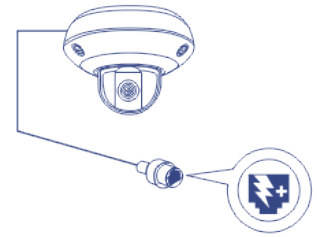
### Multi-Sensor Camera

This multi-sensor HD surveillance camera features one 2MP PTZ lens with 4x optical zoom and three 2MP fixed lenses, surrounding the camera base to provide 360° of video coverage.



### Optical Zoom PTZ

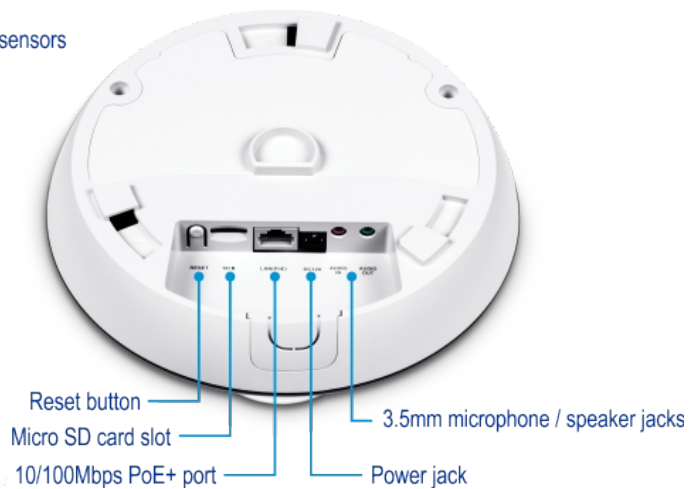
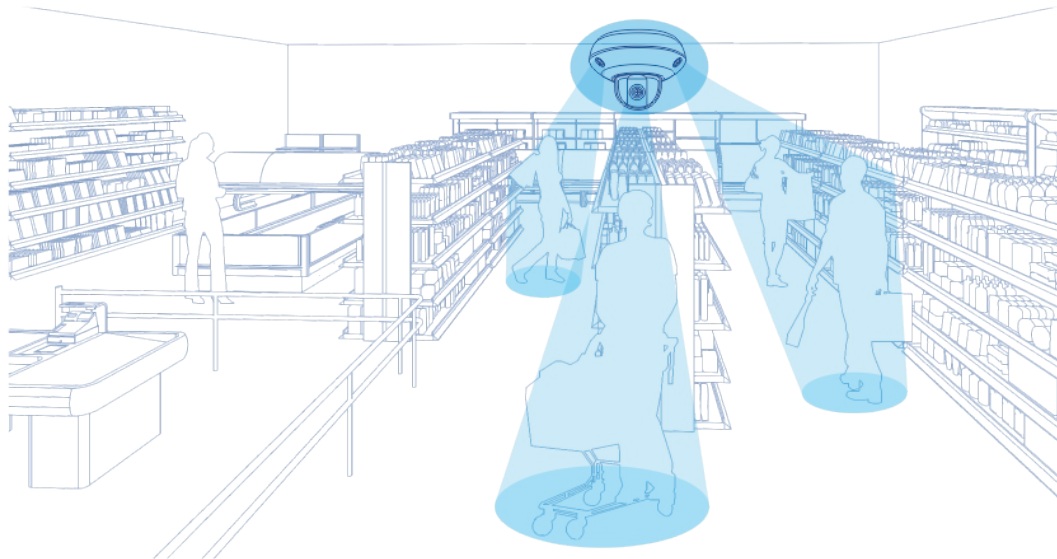
The built-in 4x optical zoom PTZ lens allows you to adjust the field of view from 120° – 56.6° to achieve the ideal viewing field for your installation.



### Power over Ethernet (PoE+)

PoE+ offers cost savings and the flexibility to install this IR network camera up to 100m (328 ft.) from the PoE+ source equipment.

## NETWORKING SOLUTION



## FEATURES



### Multi-Sensor HD Surveillance Camera

This multi-sensor HD surveillance camera features one 2MP PTZ lens with 4x optical zoom and three 2MP fixed lenses, surrounding the camera base to provide 360° of video coverage



### PoE+

Save installation costs with Power over Ethernet (PoE+)



### Event Triggers

Create custom motion detection, intrusion detection, and crossing line detection zones to record video and send email notifications when an event is triggered



### Optical Zoom Lens

Built-in 4x optical zoom PTZ lens allows you to adjust the field of view from 120° – 56.6°



### Storage

Record video to a network storage device or to a Micro SD card (up to 256GB, not included)



### Digital Wide Dynamic Range (DWDR)

Adjustable DWDR setting improves image quality when a camera is exposed to high contrast lighting environments by enhancing the dark areas of the image to make them more visible



### Smart IR

Smart IR dynamically adjusts the infrared (IR) LEDs by lowering IR intensity when objects are near, and increasing IR intensity when objects are farther away. Night-time viewing up to 10m (33 ft.) away



### Advanced Playback

Multi-sensor-HD surveillance camera features advanced in-camera archived video playback functionality



### Recording Flexibility

Define custom schedules using continuous (24/7) and event-based recording modes

## SPECIFICATIONS

### Fixed Lens

- Focal length: 2mm @ F2.0
- Sensor: 1/2.8" CMOS sensor
- DWDR: 50dB
- Horizontal viewing angle: 128.5°

### PTZ Lens

- Focal length: 2.8 – 12mm @ F2.0 – F2.4
- Sensor: 1/2.8" CMOS sensor
- Optical zoom: 4x
- Digital zoom: 8x
- DWDR: 50dB
- Horizontal viewing angle: 120° – 56.6° (wide – tele)
- Pan: 0° ~ 350°
- Tilt : 0° ~ 90°
- Min. distance: 10mm – 1500mm (wide – tele)

### Hardware Standards

- IEEE 802.1x
- IEEE 802.3
- IEEE 802.3u
- IEEE 802.3x
- IEEE 802.3at

### Minimum Illumination

- IR off: 0.01 lux
- IR on: 0 lux
- IR distance: 10m (33 ft.)
- IR LED wavelength: 850nm

### Compression

- H.265+ / H.265
- H.264+ / H.264
- MJPEG

### Resolution

- Main stream: H.265+/H.265/H.264+/H.264: 1920 x 1080 up to 20 fps
- Sub stream: H.265/H.264/MJPEG: 704 x 480 up to 20 fps

### Device Interface

- 10/100Mbps PoE+ port
- Micro SD card slot
- 3.5mm microphone / speaker jacks
- Power jack
- Reset button

### Micro SD slot

- Supports Micro SD/SDHC/SDXC (not included)
- Up to 256GB

### Audio

- 2-way audio
- 3.5mm microphone / speaker jacks (mic and speaker not included)

### Protocole réseau

- IPv4, IPv6, UDP, TCP/IP
- DHCP, NTP, DDNS, SMTP, FTP, LLTD
- SNMP v1, v2c, v3, QoS/DSCP, IEEE 802.1X
- NFS, SMB/CIFS
- HTTP, HTTPS
- PPPoE
- UPnP, RTSP, RTP

### Standard

- ONVIF Profile (S, G)

### Dimension

- 183 x 133.2 x 133.2mm (7.2 x 5.25 x 5.25 in.)

### Weight

- 0.9kg (2 lb.)

### Operating Temperature

- -10° – 50° C (14° – 122° F)

### Humidity

- Max. 90% non-condensing

### Power

- Input: PoE+
- Max. consumption: 24W

## Management Interface

- Multi-language support: English, French, German, Spanish, and Portuguese
- Image settings: Brightness, Contrast, Saturation, Sharpness, Exposure Time, image Gain, Day/Night switch, Smart IR, BLC, WDR, white balance, Digital Noise Reduction, Mirror, Rotate, Scene Mode, Video Standard
- DWDR enhances video quality in high contrast daytime lighting
- Digital Noise Reduction removes digital noise from the video signal
- Recording: to computer, micro SD, or SAMBA share
- Time, date, and text overlay
- IP Address Filter
- Video Recording: scheduled, motion detection, intrusion detection, crossing line detection, and tamper detection
- Motion detection: define motion detection areas and motion sensitivity
- Privacy masks: define custom privacy masks
- Tamper detection function: email notification
- Snapshot: real time snapshot and motion triggered
- Supported dynamic DNS services: dyn.com and no-ip.com
- Supports remote management
- Compatible browsers: Internet Explorer® or Safari®

## TRENDnetVIEW EVO Software

- Supports up to 32 TRENDnet cameras
- Multiple language support
- Set recording options (motion detection, schedule, event trigger)
- Search and playback
- Custom viewing modes and options
- Compatibility: Windows® 10, 8.1, Windows Server® 2012, 2008

## TRENDnet IPVIEW App

- Free iOS® and Android™ apps
- View live camera video on a mobile device
- Take snapshots
- Zoom

## Certifications

- CE
- FCC

## Warranty

- 3 year

## Package Contents

- TV-IP460PI
- Quick installation guide
- Camera mounting hardware