



## **85Mbps Powerline Wireless Access Point TPL-210AP (v1.0R)**

The Wireless Powerline Access Point removes additional costs in network cabling by using existing power lines in your home or small office to network several wireless workstations. Secure file sharing, an Internet connection, or other network resources by using 56-bit DES for 85Mbps power line transmission and WPA security for 54Mbps wireless transmission.

### **FEATURES**

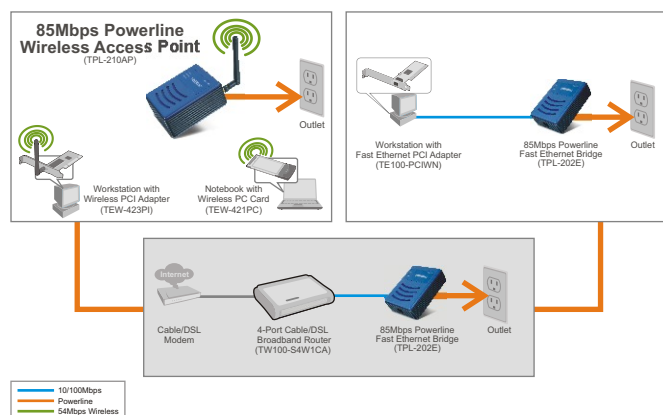
- Wi-Fi Compliant with 802.11b/g Standards
- Up to 54Mbps High Speed over Wireless Connection
- Up to 85Mbps High-Speed Data Transfer Rate over Power Lines
- Supports Access Point Mode
- Dynamic Data Rate Scaling at 54, 48, 36, 24, 18, 12, 9 and 6Mbps for 802.11g
- Dynamic Data Rate Scaling at 11, 5.5, 2 and 1Mbps for 802.11b
- Supports ESSID Enable/Disable and MAC address Filter (60 entries) Feature to Increase Security
- Supports 64/128-bit Wired Equivalent Privacy (WEP) and WPA/WPA2 (EAP/PSK) Encryptions
- Wireless Range of 30 ~ 50 meters Indoor (depending on the environment)
- Wireless Range of 50 ~ 100 meters Outdoor (depending on the environment)
- Connect to a Network using exiting Powerlines with Wall-Plugged Design
- 3-Year Warranty

# 85Mbps Powerline Wireless Access Point TPL-210AP (v1.0R)

## SPECIFICATIONS

Hardware	
Standards	• IEEE 802.11b (11Mbps), IEEE 802.11g (54Mbps) • HomePlug 1.0 Turbo
LED Indicators	• Power, HomePlug, WLAN
Network Protocols	• TCP/IP, UDP
Power Source	• 100~240V AC, 50~60Hz
Dimension (L x W X H)	• 74 x 100 x 35 mm (2.9 x 4 x 1.3 inches)
Weight	• 200g (7oz.)
Power Consumption	• 3.8 watts(max.)
Temperature	• Operating: 0° ~ 40° C (32° ~ 104° F); Storage: -10° ~ 70° C (14° ~ 158° F)
Certifications	• FCC, CE
Powerline	
Frequency Band	• 2MHz ~ 30MHz
Data Rate	• Up to 85Mbps Transfer Rate
Nodes	• Support up to 16 nodes per Network
Security	• 56-bit DES Encryption
Wireless	
Module Technique	• OFDM, CCK, DQPSK, DBPSK
Frequency Range	• 2.4 ~ 2.4835 GHz
Antenna	• 2dBi Detachable Dipole Antenna
Data Rate (auto fallback)	• 802.11b: 11Mbps, 5.5Mbps, 2Mbps, and 1Mbps • 802.11g: 54Mbps, 48Mbps, 36Mbps, 24Mbps, 18Mbps, 12Mbps, 9Mbps and 6Mbps
Security	• 64/128-bit WEP (HEX/ASCII), WPA/WPA-PSK (AES/TKIP), WPA2/WPA-PSK (AES/TKIP)
Transmit Power	• 13.5 ±1.5dBm (typical)
Channels	• 1~11 channels (US), 1~13 channels (EU)

## NETWORKING SOLUTIONS



## PACKAGE CONTENTS

- TPL-210AP
- Quick Installation Guide
- Utility CD-ROM

## RELATED PRODUCTS

TPL-202E	85Mbps Powerline Fast Ethernet Bridge
TPL-102E	Powerline 10/100Mbps Ethernet Bridge
TPL-111BR	125Mbps 802.11g Wireless Powerline Router

## ORDERING INFORMATION

**TRENDnet**<sup>®</sup>

20675 Manhattan Place, Torrance, CA 90501 USA  
Tel: 1-310-961-5500  
Fax: 1-310-961-5511  
Web: [www.trendnet.com](http://www.trendnet.com)  
Email: [sales@trendnet.com](mailto:sales@trendnet.com)

To Order Please Call:

**1-888-326-6061**

