

Quick Installation Guide  

**TEW-623PI**  
3.02

# Table of Contents

English	1
1. Before You Start	1
2. How to Install	2
3. Using the Wireless Adapter	4
Troubleshooting	5



## Package Contents

- TEW-623PI
- CD-ROM (Utility and User's Guide)
- Multi-Language Quick Installation Guide
- 3 x 2dbi Antennas

## System Requirements

- 32-bit PCI 2.2 slot
- CD-ROM Drive
- CPU: 1GHz or above (Windows 7) / 800MHz or above (Windows Vista) / 300Mhz or above (Windows XP/2000)
- Memory: 1GB RAM or above (Windows 7) / 512MB RAM or above (Windows Vista) / 256MB RAM or above (Windows XP/2000)
- Windows 7(32/64-bit) / Vista (32/64-bit) / XP (32/64-bit) / 2000

## 2. How to Installation

**Important!** DO NOT install the PCI adapter the computer until instructed to do so.

1. Insert the **Utility & Driver CD-ROM** into your computer's CD-ROM Drive.

2. Click **Run Autorun.exe**  
(Windows 7/Vista Only).

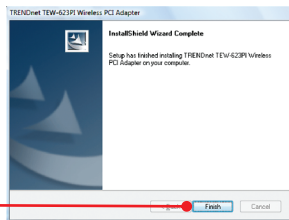
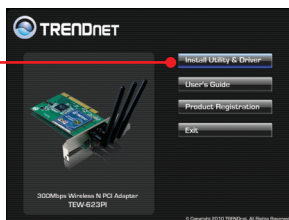
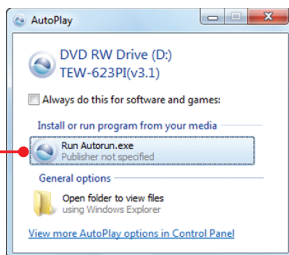
3. Click **Install Utility.**

4. Follow the **InstallShield Wizard** instructions and then click **Finish**.

5. Remove the Utility and Driver CD-ROM from your computer.

6. Shutdown your computer.

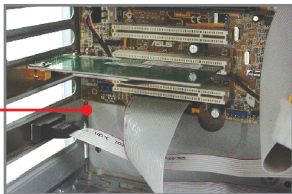
7. Open your computer's case.



**Note:** Please refer to your computer's user manual regarding hardware installation.

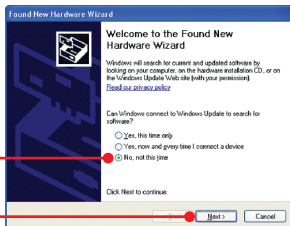


8. Insert the PCI Card firmly into an available PCI Card slot of desktop PC, attach the included antennas, and then turn **ON** the computer and wait until the Windows desktop appears.

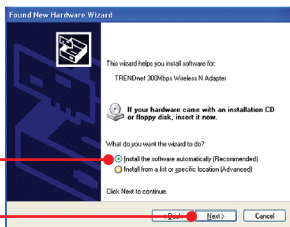


**Note:** For Windows 7/Vista/2000, drivers will install automatically. Proceed to Section 3 Using the Wireless Adapter. For Windows XP, continue on to step 9

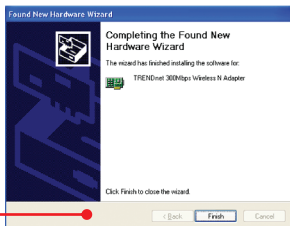
9. Select **No, not this time** and then click **Next**.



10. Select **Install this software automatically (recommended)** and then click **Next**.



11. Click **Finish**.



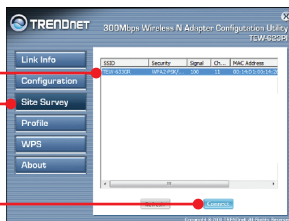
**Your installation is now complete**

### 3. Using the Wireless Adapter

1. Double-click the Wireless N Adapter Configuration Utility icon in your system tray.



2. Click **Site Survey**. Click the **SSID** that matches your wireless access point and then click **Connect**.



#### Wireless Configuration is complete

For detailed information regarding the **TEW-623PI** configuration and advanced settings, please refer to the Troubleshooting section, User's Guide on the Utility CD-ROM, or TRENDnet's website at <http://www.trendnet.com>.

#### Register Your Product

To ensure the highest level of customer service and support, please take a moment to register your product Online at: [www.trendnet.com/register](http://www.trendnet.com/register)

Thank you for choosing TRENDnet

ENGLISH

FRANÇAIS

DEUTSCH

ESPAÑOL

РУССКИЙ

## 1. I inserted the Utility & Driver CD-ROM into my computer's CD-ROM Drive and the installation menu does not appear automatically. What should I do?

1. For Windows 7, if the installation menu does not appear automatically, click on the Windows Icon on the bottom left hand corner of the screen., click the "Search programs and files" box, and type D:\autorun.exe, where "D" in "D:\autorun.exe" is the letter assigned to your CD-ROM Drive, and then press the ENTER key on your keyboard
2. For Windows Vista, if the installation menu does not appear automatically, click **Start**, click the **Start Search** box, and type D:\autorun.exe where "D" in "D:\autorun.exe" is the letter assigned to your CD-ROM Drive, and then press the ENTER key on your keyboard.
3. For Windows 2000/XP, if the installation menu does not appear automatically, click **Start**, click **Run**, and type D:\autorun where "D" in "D:\autorun.exe" is the letter assigned to your CD-ROM Drive, and then press the ENTER key on your keyboard.

## 2. I completed all the steps in the quick installation guide, but my Wireless Adapter is not connecting to my access point. What should I do?

1. Verify that the Network Name (SSID) matches your wireless router or access point's Network Name (SSID).
2. Check your TCP/IP properties to ensure that Obtain an IP address automatically is selected.
3. Open the Wireless N Adapter Configuration Utility, click Site Survey and then click refresh to check and see if there are any available wireless networks listed.
4. Your wireless network may be encrypted. Contact your network administrator to find the encryption type and encryption key. Then click on **Configuration** to enter the encryption key.

## 3. Windows is unable to recognize my hardware. What should I do?

1. Make sure your computer meets the minimum requirements as specified in Section 1 of this quick installation guide.
2. You must complete the installation of the wireless adapter configuration utility (as described in Section 2) before connecting the Wireless Adapter to your computer.
3. Connect the Wireless Adapter to a different PCI slot on your computer.

## 4. I cannot open the Wireless N Adapter Configuration Utility. What should I do?

1. Access your device manager to make sure the adapter is installed properly. If you see a networking device with a yellow question mark or exclamation point, you will need to reinstall the device and/or the drivers. To access the device manager on Windows 7, click on the Windows icon on the bottom left hand corner of the screen, right-click on Computer, click Properties and then click **Device Manager**. To access the device manager on Windows Vista, right-click on **Computer**, click **Properties** and then click **Device Manager**. To access the device manager on Windows 2000/XP, right-click **My Computer**, click **Properties**, click the **Hardware** tab, and then click **Device Manager**.
2. If you are running Windows XP, you need to disable wireless zero configuration. Go to **Control Panel -> Network Connections**. Right click on the **Wireless Network Connection** icon and select **Properties**. Click on the **Wireless Networks** tab and uncheck **Use windows to configure my wireless settings**. Then click **OK**.

If you still encounter problems or have any questions regarding the **TEW-623PI**, please refer to the User's Guide included on the Utility & Driver CD-ROM or contact TRENDnet's Technical Support Department.

# Declaration of Conformity



## Company Information:

Company Name:  
TRENDware International, Inc.

Company Address:  
20675 Manhattan Place  
Torrance, CA 90501  
USA

## Product Information:

Product Description:  
300Mbps Wireless N PCI Adapter

Model Number:  
TEW-623PI

Brand name:  
TRENDnet



## Technical Standards:

EN 300 328 V1.7.1: 10-2006  
EN 301 489-1 V1.6.1: 09-2005  
EN 301 489-17 V1.2.1: 08-2002  
EN 50392: 2004  
EN 60950-1: 2001  
EN 60950-1/A11: 2004

## Declaration:

*The product is herewith confirmed to comply with the requirements of Directive 1999/5/EC of the Council (European Parliament) on the radio and telecommunications terminal equipment.*

*I hereby declare that the products and devices mentioned above are consistent with the standards and provisions of the guidelines.*

Sonny Su

\_\_\_\_\_  
Name (Full Name)

October 12, 2009

\_\_\_\_\_  
Date

Director of Technology

\_\_\_\_\_  
Position / Title

\_\_\_\_\_  
Legal Signature



## Certifications

This equipment has been tested and found to comply with FCC and CE Rules.

Operation is subject to the following two conditions:

- (1) This device may not cause harmful interference.
- (2) This device must accept any interference received. Including interference that may cause undesired operation.



Waste electrical and electronic products must not be disposed of with household waste. Please recycle where facilities exist. Check with you Local Authority or Retailer for recycling advice.



**NOTE:** THE MANUFACTURER IS NOT RESPONSIBLE FOR ANY RADIO OR TV INTERFERENCE CAUSED BY UNAUTHORIZED MODIFICATIONS TO THIS EQUIPMENT. SUCH MODIFICATIONS COULD VOID THE USER'S AUTHORITY TO OPERATE THE EQUIPMENT.

### ADVERTENCIA

En todos nuestros equipos se mencionan claramente las características del adaptador de alimentación necesario para su funcionamiento. El uso de un adaptador distinto al mencionado puede producir daños físicos y/o daños al equipo conectado. El adaptador de alimentación debe operar con voltaje y frecuencia de la energía eléctrica domiciliar existente en el país o zona de instalación.



# TRENDnet<sup>®</sup>

## Product Warranty Registration

Please take a moment to register your product online.  
Go to TRENDnet's website at <http://www.trendnet.com/register>