
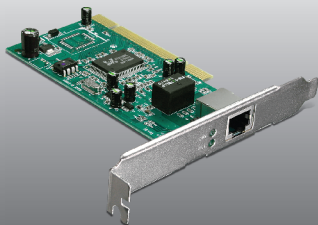


Quick Installation Guide  

**TEG-PCITXR**  
**TEG-PCITXRL**  
3.14

# Table of Contents

English	1
1. Before You Start	1
2. How to Install	2
Troubleshooting	4



## Package Contents

- TEG-PCITXR/TEG-PCITXRL
- CD-ROM (Drivers)
- Multi-Language Quick Installation Guide

## System Requirements

- 32-bit PCI 2.1 slot
- CD-ROM Drive
- Network Cable

Supported Operating Systems	CPU	Memory
Windows 7 (32/64-bit)	1GHz or above	1GB RAM or above
Windows Vista (32/64-bit)	800MHz or above	512MB RAM or above
Windows XP (32/64-bit) / 2003 Server / 2000 / ME / 98SE	300MHz or above	256MB RAM or above

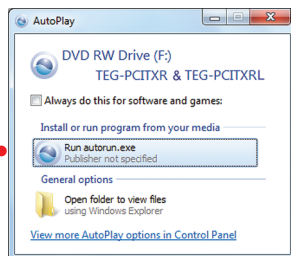
## 2. How to Install

### Note:

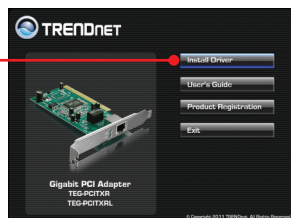
1. For Windows 7, please skip to step 7. For Windows Vista/XP/2000, continue on to step 1.
2. Do not insert the TEG-PCITXR/TEG-PCITXRL until instructed to do so.

1. Insert the **Driver CD-ROM** into your computer's CD-ROM Drive.

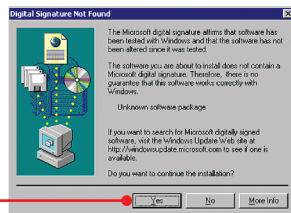
2. Click **Run autorun.exe** (Windows Vista only)



3. Click **Install Driver**.



4. Follow the **InstallShield Wizard** instructions.



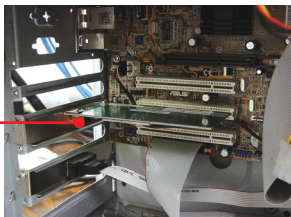
5. Click **Yes** (Windows 2000 only).

6. Click **Finish**.

7. **Shutdown** your computer and then open your computer's Case.



8. Insert PCI Card firmly into an available PCI slot, and then turn **ON** the computer and wait until the Windows desktop appears.



9. Drivers will install automatically.



10. Click **Yes** (Windows 2000 only)

11. Connect one end of a network cable to one of the network ports on your modem, router or switch. Connect the other end of the cable to the **TEG-PCITXR/TEG-PCITXRL's** network port.



**Your installation is now complete.**

## 1. I inserted the Driver CD-ROM into my computer's CD-ROM drive and the installation menu does not appear automatically. What should I do?

1. For Windows 7, if the installation menu does not appear automatically, click on the Windows Icon on the bottom left hand corner of the screen, click the **"Search programs and files"** box, and type **D:\autorun.exe**, where **"D"** in **"D:\autorun.exe"** is the letter assigned to your CD-ROM Drive, and then press the ENTER key on your keyboard.
2. For Windows Vista, if the installation menu does not appear automatically, click **Start**, click the **Start Search** box, and type **D:\autorun.exe** where **"D"** in **"D:\autorun.exe"** is the letter assigned to your CD-ROM Drive, and then press the ENTER key on your keyboard.
3. For Windows 2000/XP, if the installation menu does not appear automatically, click **Start**, click **Run**, and type **D:\autorun** where **"D"** in **"D:\autorun.exe"** is the letter assigned to your CD-ROM Drive, and then press the ENTER key on your keyboard.

## 2. Windows doesn't recognize my new hardware. What should I do?

1. Verify that your computer meets the system requirements as specified in **Section 1**.
2. Access your device manager to make sure the adapter is installed properly.
  1. To access the device manager on Windows 7, click on the Windows icon on the bottom left-hand corner, click **Computer**, click **System Properties** and then click **Device Manager**.
  2. To access the device manager on Windows Vista, right-click **Computer**, click **Properties** and then click **Device Manager**.
  3. To access the device manager on Windows XP, right-click **My Computer**, click **Properties**, click the **Hardware** tab, and then click **Device Manager**.

If you see a networking device with a yellow question mark or exclamation point:

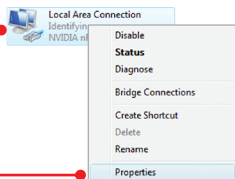
1. Uninstall the device from device manager
  2. Shutdown the computer.
  3. Remove the adapter from the computer
  4. Reinstall the adapter. See Section 2. **How to Install**.
3. If the device manager fails to recognize the presence of a new networking adapter, verify that the network adapter is firmly seated in the PCI slot.
  4. Plug the adapter into another PCI slot on your computer.

## 3. Windows recognizes my new hardware, but I'm unable to connect to my network. What should I do?

1. Verify that the RJ-45 Ethernet Cable is securely connected from your switch or router to your network adapter.
2. Verify that the LEDs on your network card are lit.
3. Verify that the TCP/IP settings are set to **Obtain an IP address automatically** (see the steps below).

## Windows 7

1. Go into the **Control Panel**, click **Network and Internet**, click **Network and Sharing Center**, click **Change Adapter Settings** and then right-click the **Local Area Connection** icon and then click **Properties**.



☒ Obtain an IP address automatically

☐ Use the following IP address:

IP address:

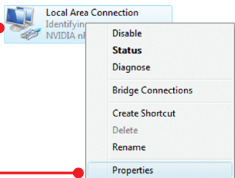
Subnet mask:

Default gateway:

2. Click **Internet Protocol Version 4(TCP/IPv4)** and then click **Properties**. Then click on **Obtain an IP address automatically**.

## Windows Vista

1. Go into the **Control Panel**, click **Network and Internet**, click **Network and Sharing Center**, click **Manage Network Connections** and then right-click the **Local Area Connection** icon and then click **Properties**.



☒ Obtain an IP address automatically

☐ Use the following IP address:

IP address:

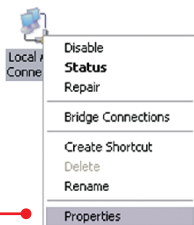
Subnet mask:

Default gateway:

2. Click **Internet Protocol Version 4(TCP/IPv4)** and then click **Properties**. Then click on **Obtain an IP address automatically**.

## Windows XP/2000

1. Go into the **Control Panel**, double-click the **Network Connections** icon and then right-click the **Local Area Connection** icon and then click **Properties**.



☒ Obtain an IP address automatically

☐ Use the following IP address:

IP address:

Subnet mask:

Default gateway:

2. Click **Internet Protocol (TCP/IP)** and then click **Properties**. Then click on **Obtain an IP address automatically**.

### 4. How do I install the drivers on Windows 98 or ME?

Please refer to the Help folder on the Driver CD-ROM.

### 5. Why am I only getting a network connection speed of 100Mbps instead of 1000Mbps?

1. Check the Ethernet Cable. Make sure you are using CAT-5e or CAT-6 Ethernet Cables. Some CAT-5 cables are not rated to run in Gigabit.
2. Make sure you are connected to a 1000Mbps switch.

If you still encounter problems or have any questions regarding the **TEG-PCITXR/TEG-PCITXRL**, please refer to the User's Guide included on the Driver CD-ROM or contact Trendnet's Technical Support Department.



# Declaration of Conformity



## Company Information:

Company Name:

TRENDnet, Inc.

Company Address:

20675 Manhattan Place

Torrance, CA 90501

USA

## Product Information:

Product Description:

Gigabit PCI Adapter / Low Profile Gigabit PCI Adapter



Model Number:

TEG-PCITXR / TEG-PCITXRL

Brand name:

TRENDnet

## Technical Standards:

EN 55022 : 2006 + A1 : 2007 Class A

EN 61000-3-2 : 2006

EN 61000-3-3 : 1995 + A1: 2001 +A2: 2005

EN 55024 : 1998 + A1 : 2001 + A2 : 2003

## Declaration:

The product is herewith confirmed to comply with the requirements of Directive 2004/108/EC of the Council (European Parliament) on the EMC directive.

*I hereby declare that the products and devices mentioned above are consistent with the standards and provisions of the guidelines.*

Sonny Su

Full Name

May 1, 2011

Date

Director of Technology

Position / Title

A handwritten signature in black ink, appearing to read "Sonny Su", written over a horizontal line.

Signature

## Certifications

This equipment has been tested and found to comply with FCC and CE Rules.

Operation is subject to the following two conditions:

- (1) This device may not cause harmful interference.
- (2) This device must accept any interference received. Including interference that may cause undesired operation.



Waste electrical and electronic products must not be disposed of with household waste. Please recycle where facilities exist. Check with you Local Authority or Retailer for recycling advice.



**NOTE:** THE MANUFACTURER IS NOT RESPONSIBLE FOR ANY RADIO OR TV INTERFERENCE CAUSED BY UNAUTHORIZED MODIFICATIONS TO THIS EQUIPMENT. SUCH MODIFICATIONS COULD VOID THE USER'S AUTHORITY TO OPERATE THE EQUIPMENT.

## ADVERTENCIA

En todos nuestros equipos se mencionan claramente las características del adaptador de alimentación necesario para su funcionamiento. El uso de un adaptador distinto al mencionado puede producir daños físicos y/o daños al equipo conectado. El adaptador de alimentación debe operar con voltaje y frecuencia de la energía eléctrica domiciliar existente en el país o zona de instalación.



## Product Warranty Registration

Please take a moment to register your product online.  
Go to TRENDnet's website at <http://www.trendnet.com/register>