



Quick Installation Guide



TBW-104UB

Table of Contents

English	1
1. Before You Start	1
2. How to Install	2
3. Configuring the Bluetooth Adapter	5
Troubleshooting	7

1. Before You Start



Package Contents

- TBW-104UB
- Quick Installation Guide
- Utility & Driver CD-ROM

System Requirements

- CD-ROM drive
- Computer With An Available USB 1.1 or 2.0 Port
- CPU: Pentium 300MHz or Above
- Memory: 256 MB or Above
- Hard Drive Space: 50MB or Above
- Windows 2000/XP/Vista

Application

Notebook with Advanced High-Speed Bluetooth USB Adapter (TBW-104UB)



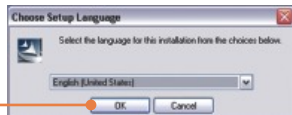
2. How to Install

Note: Do not insert the TBW-104UB USB adapter until instructed to do so.

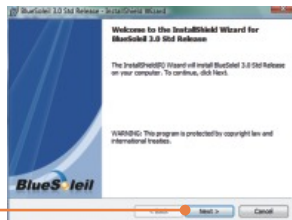
1. Insert the **Utility & Driver CD-ROM** into your CD-ROM drive and click **Install Utility**.



2. Select Language from the drop down menu. Click **OK**



3. Click **Next**.



4. Select **I accept the terms in the license agreement**. Click **Next**



5. Follow the InstallShield Wizard instructions and then click **Finish**.



6. Click **Yes** to restart the computer. (Windows 2000 only)



7. Connect the TBW-104UB into the computer's USB port.



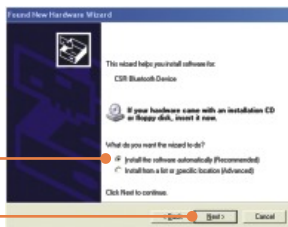
Drivers for Windows Vista and 2000 will install automatically. Proceed to section 3. For Windows XP, continue on to step 8.

Windows XP

8. Select **No, not this time** and then click **Next**.



9. Select **Install the software automatically (Recommended)** and then click **Next**.



10. Click **Finish**.



Your installation is now complete.

For detailed information regarding the TBW-104UB configuration and advanced settings, please refer to the User's Guide included on the Utility & Driver CD-ROM or TRENDnet's website at www.trendnet.com

3. Configuring the Bluetooth Adapter

Note: Make sure your Bluetooth device is powered on and in pairing mode.

1. Double-click the Bluetooth icon on your system tray.

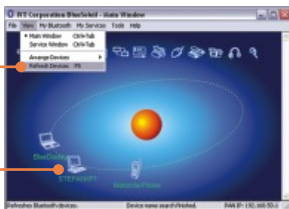


2. Click **OK**.

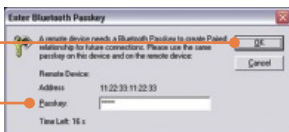


3. Go to **View -> Refresh Devices**.

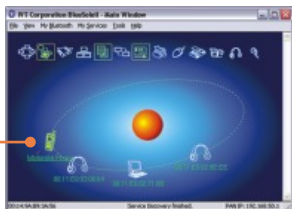
4. Right click on your Bluetooth device and select **Pair Device**.



5. Type in a **Passkey** (for example: 0000. Please consult your Bluetooth device's manual for more information) and then click **OK**. Then put in the same **Passkey** on your Bluetooth device.



6. Double left-click on your Bluetooth device to show the available services.



Your configuration is now complete.

For detailed information regarding the TBW-104UB configuration and advanced settings, please refer to the User's Guide included on the Utility & Driver CD-ROM or TRENDnet's website at www.trendnet.com

Register Your Product

To ensure the highest level of customer service and support, please take a moment to register your product Online at: www.TRENDnet.com/register

Thank you for choosing TRENDnet

Q1: Windows is unable to recognize my hardware. What should I do?

A1: First, make sure your computer meets the minimum requirements as specified in Section 1 of this quick installation guide. Second, you must install the Bluetooth utility BEFORE you physically install your Bluetooth Adapter. Third, plug the adapter into a different USB slot.

Q2: The Bluetooth software is unable to detect my Bluetooth-enabled device. What should I do?

A2: First, disable any software firewall programs such as ZoneAlarm or Norton Internet Security. If you have Windows XP/Vista installed on your computer, make sure to disable the built-in firewall. Second, make sure Bluetooth enabled device is powered on.

Q3: I cannot pair my Bluetooth enabled device to the TBW-104UB USB Adapter. What should I do?

A3: First, make sure that Bluetooth device is powered on. Second, make sure that your Bluetooth enabled device is in pairing mode. Third, make sure to put in the same **Passkey** on both devices.

Q4: I am not receiving 3Mbps data rate through the adapter. What should I do?

A4: In order to get the full data rate, your Bluetooth device must support Bluetooth v2.0 with Enhanced Data Rate (EDR).

If you still encounter problems or have any questions regarding the TBW-104UB, please refer to the User's Guide included on the Utility & Driver CD-ROM or contact TRENDnet's Technical Support Department.

Certifications

This equipment has been tested and found to comply with FCC and CE Rules.

Operation is subject to the following two conditions:

- (1) This device may not cause harmful interference.
- (2) This device must accept any interference received. Including interference that may cause undesired operation.



Waste electrical and electronic products must not be disposed of with household waste. Please recycle where facilities exist. Check with you Local Authority or Retailer for recycling advice.



NOTE: THE MANUFACTURER IS NOT RESPONSIBLE FOR ANY RADIO OR TV INTERFERENCE CAUSED BY UNAUTHORIZED MODIFICATIONS TO THIS EQUIPMENT. SUCH MODIFICATIONS COULD VOID THE USER'S AUTHORITY TO OPERATE THE EQUIPMENT.

ADVERTENCIA

En todos nuestros equipos se mencionan claramente las características del adaptador de alimentación necesario para su funcionamiento. El uso de un adaptador distinto al mencionado puede producir daños físicos y/o daños al equipo conectado. El adaptador de alimentación debe operar con voltaje y frecuencia de la energía eléctrica domiciliar existente en el país o zona de instalación.



TRENDnet Technical Support

US • Canada

Toll Free Telephone: 1(866) 845-3673

24/7 Tech Support



Europe (Germany • France • Italy • Spain • Switzerland • UK)

Toll Free Telephone: +00800 60 76 76 67

English/Espanol - 24/7

Francais/Deutsch - 11am-8pm, Monday - Friday MET

Worldwide

Telephone: +(31) (0) 20 504 05 35

English/Espanol - 24/7

Francais/Deutsch - 11am-8pm, Monday - Friday MET

Product Warranty Registration

Please take a moment to register your product online.

Go to TRENDnet's website at <http://www.trendnet.com>

TRENDnet[®]
20675 Manhattan Place
Torrance, CA 90501
USA