



## Quick Installation Guide



**TW100-BRV324**

# Table of Contents

Français .....	1
1. Avant de commencer .....	1
2. Installation du matériel .....	2
3. Configuration du routeur .....	3
Troubleshooting .....	4

# 1. Avant de commencer



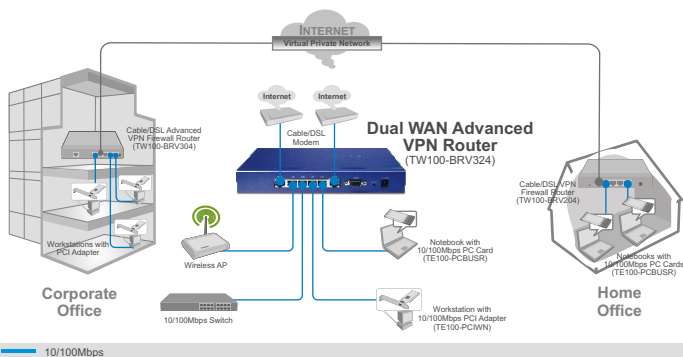
## Contenu de l'emballage

- TW100-BRV324
- Guide d'installation rapide
- Guide de l'utilisateur sur CD-ROM
- 1 câble Ethernet RJ-45
- Adaptateur secteur (5V, 3A)

## Configuration nécessaire

- Un ordinateur avec un adaptateur réseau câblé correctement installé
- Navigateur Internet : Internet Explorer (5.0 ou supérieur) ou Netscape Navigator (4.7 ou supérieur)
- Internet à large bande
- Modem DSL ou câble installé

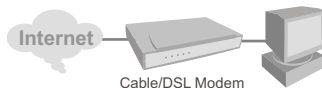
## Application



## 2. Installation du matériel

Remarque : Avant de débiter, réunissez toutes les informations concernant votre connexion Internet. En cas de besoin, contactez votre fournisseur d'accès Internet (FAI).

1. Lorsque vous connectez votre ordinateur directement au modem câble ou DSL, vérifiez que vous avez une connexion Internet.



2. Connectez l'extrémité d'un câble RJ-45 au port WAN 1 du TW100-BRV324. Branchez l'autre extrémité du câble à votre modem. Si vous avez une deuxième connexion Internet, branchez une extrémité d'un câble RJ-45 au WAN 2. Branchez ensuite l'autre extrémité du câble au deuxième modem.

3. Branchez une extrémité du câble RJ-45 des ports LAN du TW100-BRV324. Branchez l'autre extrémité au port Ethernet de l'ordinateur.

4. Branchez l'adaptateur secteur AC au TW100-BRV324 et ensuite à une prise de courant.

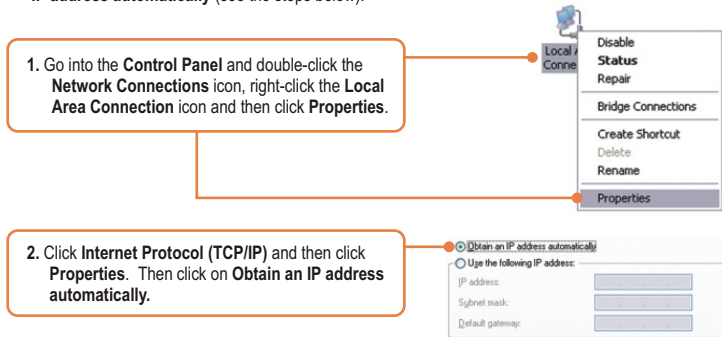
5. Vérifiez que les voyants lumineux suivants, se trouvant sur l'avant, sont allumés : **Power**, **LINK/Act**, **WAN 1** et **WAN 2**.





**Q1:** I typed `http://192.168.0.1` in my Internet Browser's Address Bar, but an error message says "The page cannot be displayed." How can I get into the TW100-BRV324's web configuration page?

**A1:** First, check your hardware settings again by following the instructions in Section 2. Second, make sure the LINK/ACT light for the LAN port is lit. Third, make sure your TCP/IP settings are set to **Obtain an IP address automatically** (see the steps below).



Fourth, press on the factory reset button for 15 seconds.

**Q2:** I am not sure what type of Internet Account Type I have for my Cable/DSL connection. How do I find out?

**A2:** Contact your Internet Service Provider's (ISP) support service for the correct information.

**Q3:** I went through the Setup Wizard, but I can not get onto the Internet. What should I do?

**A3:** First, verify that you can get onto the Internet with a direct connection into your modem. Second, contact your ISP and verify all the information that you have in regards to your Internet connection settings is correct. Third, power cycle your modem and router. Unplug the power to the modem and router. Wait 30 seconds, and then reconnect the power to the modem. Wait for the modem to fully boot up, and then reconnect the power to the router.

**Q4:** Can I use the console port to configure the TW100-BRV324?

**A4:** The console port is intended for troubleshooting purposes only. You can not use the console port for configuration purposes. Please use the browser to configure the TW100-BRV324.

If you still encounter problems or have any questions regarding the TW100-BRV324, please contact TRENDnet's Technical Support Department.

## Register Your Product

To ensure the highest level of customer service and support, please take a moment to register your product Online at: [www.trendnet.com/register](http://www.trendnet.com/register)

Thank you for choosing TRENDnet

## Certifications

This equipment has been tested and found to comply with FCC and CE Rules. Operation is subject to the following two conditions:

- (1) This device may not cause harmful interference.
- (2) This device must accept any interference received. Including interference that may cause undesired operation.



Waste electrical and electronic products must not be disposed of with household waste. Please recycle where facilities exist. Check with you Local Authority or Retailer for recycling advice.



**NOTE:** THE MANUFACTURER IS NOT RESPONSIBLE FOR ANY RADIO OR TV INTERFERENCE CAUSED BY UNAUTHORIZED MODIFICATIONS TO THIS EQUIPMENT. SUCH MODIFICATIONS COULD VOID THE USER'S AUTHORITY TO OPERATE THE EQUIPMENT.

### ADVERTENCIA

En todos nuestros equipos se mencionan claramente las características del adaptador de alimentación necesario para su funcionamiento. El uso de un adaptador distinto al mencionado puede producir daños físicos y/o daños al equipo conectado. El adaptador de alimentación debe operar con voltaje y frecuencia de la energía eléctrica domiciliar existente en el país o zona de instalación.



## TRENDnet Technical Support

### US • Canada

**Toll Free Telephone:** 1(866) 845-3673

24/7 Tech Support



### Europe (Germany • France • Italy • Spain • Switzerland • UK)

**Toll Free Telephone:** +00800 60 76 76 67

English/Espanol - 24/7

Francais/Deutsch - 11 am-8pm, Monday - Friday MET

### Worldwide

**Telephone:** +(31) (0) 20 504 05 35

English/Espanol - 24/7

Francais/Deutsch - 11 am-8pm, Monday - Friday MET

## Product Warranty Registration

Please take a moment to register your product online.

Go to TRENDnet's website at <http://www.trendnet.com/register>

**TRENDnet**<sup>®</sup>  
20675 Manhattan Place  
Torrance, CA 90501  
USA