

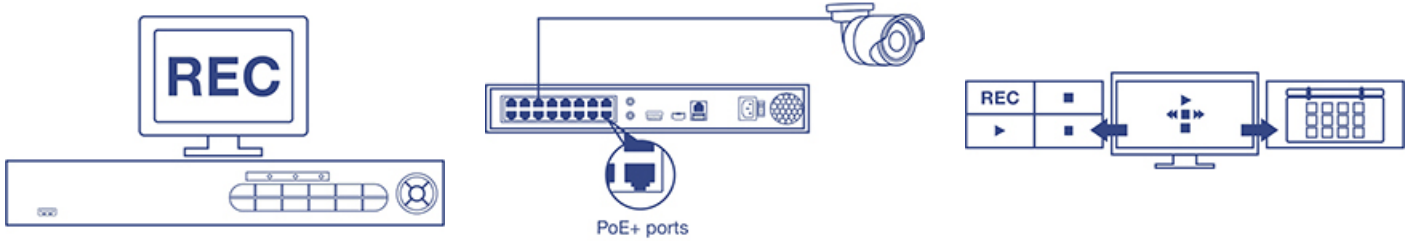


## 16-Channel HD PoE+ NVR with 4 TB HDD

TV-NVR216D4 (v1.0R)

- Standalone 16-channel PoE+ network video recorder
- Plug and play up to 16 TRENDnet PoE cameras\*
- Concurrent 1080p video recording for all channels
- Preinstalled 4 TB HDD provides one week of continuous 1080p video recording\*\*\*
- Two 3.5" SATA II bays support up to a 12 TB of storage (6 TB per bay, additional HDDs sold separately)
- Advanced video playback
- Rack mount hardware included
- PoE power budget: 200W
- Supports ONVIF compliant network camera

TRENDnet's standalone 16-channel HD PoE+ NVR, model TV-NVR216, offers a comprehensive rack mountable camera management solution. This NVR includes a preinstalled 4TB hard drive and connects up to sixteen PoE cameras\*. Install up to 12 terabytes of storage (additional hard drives sold separately) to record three weeks of continuous video from sixteen HD PoE cameras\*\*. The TV-NVR216 features advanced video playback and comes with a free iOS®/Android™ app.



### Standalone HD NVR

This standalone 1080p HD NVR includes a preinstalled 4 TB hard drive and supports a total storage capacity of up to 12 TB and powers up to sixteen PoE network cameras—HDDs, cameras, and display sold separately.

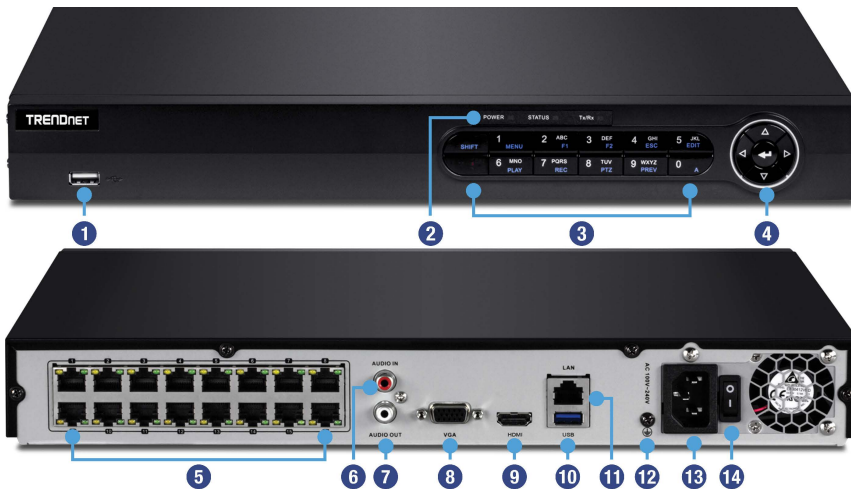
### Plug-and-Play Installation

The NVR auto-recognizes and powers TRENDnet PoE cameras\* – simply connect compatible TRENDnet PoE cameras and start recording surveillance video.

### Intuitive Interface

Users will find the management interface intuitive and easy to use – quickly navigate live view preferences, recording schedules, and advanced playback options.

## Networking Solution



- ① USB 2.0
- ② LED indicators
- ③ Push button control
- ④ Navigation button
- ⑤ PoE+ ports
- ⑥ Audio in
- ⑦ Audio out
- ⑧ VGA port
- ⑨ HDMI port
- ⑩ USB 3.0 port
- ⑪ LAN port
- ⑫ Ground
- ⑬ Power port
- ⑭ On/off switch

## Hardware



### PoE+ Ports

Plug and play TRENDnet PoE network cameras\* to the sixteen PoE+ ports with a total power budget of 200W



### Storage

Two 3.5" SATA II bays support up to 12 TB of total storage (4 TB HDD Included, 6 TB max. per bay)



### Network Uplink Port

Gigabit Ethernet network uplink port



### Display Interface

HDMI and VGA interfaces



### Audio Ports

Audio in and out ports



### USB Ports

One USB port for the included mouse and one for configuration backup



### Mouse Included

Supports mouse and keyboard (keyboard sold separately)



### Rack Mount

Rack mount hardware included

## Management



### Mobile App

See live video on a mobile device with the free iOS® and Android™ apps



### Remote Access

Access the NVR over the internet



### Camera Setup

Auto-recognizes TRENDnet cameras\* and works with most PoE network cameras



### Live View

Multiple camera viewing options with auto-scan function



### Camera Management

For each camera, manage on-screen display (OSD), image settings, PTZ functionality, motion detection, privacy masks, tamper detection, and video loss



### Video Recording

- Max. resolution for all cameras concurrently: Full HD 1080p video at 30 fps in H.264 compression
- Max. for a single camera: 6 MP resolution in H.264 compression



### Recording Time

- One week of continuous recording per camera with preinstalled 4 TB HDD and 16 x 1080p cameras at 30 fps (medium VBR)
- Three weeks of continuous recording per camera with 12 TB of storage (additional HDDs sold separately) and 16 x 1080p cameras at 30 fps (medium VBR)



### Scheduled Recording

Create weekly continuous and motion detection recording schedules for each camera with video overwrite when storage is full



### Advanced Playback

Advanced archived video playback with a quick reference timeline and calendar



### Video Export

Quickly export and archive recorded video



### Dynamic DNS Support

Support for dyn.com and NO-IP.com



### IPv6

IPv6 support



### ONVIF

Supports ONVIF compliant network camera

## Specifications

### Video Output

- HDMI/VGA
- Resolution:
  - 1920 × 1080P/60 Hz
  - 1600 × 1200P/60 Hz
  - 1280 × 1024/60 Hz
  - 1280 × 720/60 Hz
  - 1024 × 768/60 Hz

### Audio

- Line-in with RCA connector (2.0Vp-p, 1 kΩ)
- Line-out with RCA connector

### Recording

- 16-channel simultaneous recording up to 1080p 30 fps
- 2 SATA interface for HDD or SSD up to 6 TB storage each

### Playback

- Playback resolution: 6MP, 5MP, 4MP, 3MP, 1080p, UXGA, 720p, VGA, 4CIF, DCIF, 2CIF, CIF, QCIF

### Hardware Standards

- IEEE 802.3
- IEEE 802.3u
- IEEE 802.3x
- IEEE 802.3ab
- IEEE 802.3af
- IEEE 802.3at

### Device Interface

- 1 x Gigabit network port
- 16 x 10/100 PoE+ camera network ports
- 1 x 4TB HDD
- 1 x USB 2.0, 1 x USB 3.0
- HDMI port
- VGA port
- Analog audio in / out port
- Power port
- LED indicators (Power, Storage, and Network)

### Network Protocol

- IPv4, IPv6, UDP, TCP, ICMP, SSL, TLS, ONVIF v2.2
- DHCP, NTP, DNS, DDNS, SMTP, FTP, SNMP v2
- HTTP, UPnP, RTSP, RTP, RTCP

### Operating Temperature

- -10 - 55 °C (14 - 131 °F)

### Operating Humidity

- Max. 90% non-condensing

### Certifications

- CE
- FCC
- UL

### Dimensions

- 380 x 270 x 45 mm (15 x 11 x 1.8 in.)

### Weight

- 3.2 kg (7 lb.)

### Power

- Input: 100 – 240 V AC, 50/60 Hz
- Consumption: 15W max. (without PD)

### PoE

- PoE 802.3at (max. 30W per port)
- Total PoE power budget: 200W
- Plug and play with TRENDnet PoE cameras\*

### Management Interface

- Live view: Simultaneous 2x2, 3x3, 4x4, 1+5, 1+7 views or auto switch single view
- Scheduled recording: continuous and motion detection with optional holiday exceptions.
- Supporting camera configuration through NVR\*: On Screen Display, display settings: brightness, contrast, saturation, PTZ, motion detection setting, video tamper, and video loss.
- Holiday scheduling for custom recording schedules during observed holidays
- Advanced playback: playback multiple channels simultaneously and search video recordings with special event or tag

- Video export: tag, cut, and export video clips
- HDD: Encoded disk formatting, S.M.A.R.T. disk health monitoring and testing, bad sector detection, storage quota allocation to each video channel, recycle old recordings or send disk full warning to administrator by email
- USB external storage: firmware upgrade, import/export configuration file and logs, export recorded video files, search and playback videos directly from external storage
- Local live view settings: define screen layout and channel viewing sequence
- Alert messages: storage full, storage error, network disconnected, IP conflict, illegal login, and recording exceptions
- Supported dynamic DNS services: Dyn.com and NO-IP.com
- Management Setting: maximum 32 user accounts
- Traffic chart and statistics for network management

### TRENDnet IP View App

- Free iOS® and Android™ app
- View your NVR's live video on your mobile device
- Take snapshots
- Digital Zoom / Optical Zoom

### Warranty

- 2 year limited

### Package Contents

- TV-NVR216
- 1 x 4TB HDD
- CD-ROM (Utility & User's Guide)
- Power Adapter (12V DC)
- Network cable (1.8 m / 6 ft.)
- HDMI cable (1.8 m / 6 ft.)
- Optical mouse
- IR Remote Control
- SATA data cables / power cables
- Quick Installation Guide
- Rack mount hardware

\* See list of compatible cameras

\*\* Three weeks of continuous recording 16 cameras in 1080p resolution at 30 fps (medium VBR) with 12 TB of storage (additional HDDs not included)

\*\*\* One week of continuous recording per camera with preinstalled 4 TB HDD and 16 x 1080p cameras at 30 fps (medium VBR)

