

# TRENDnet<sup>®</sup>



Quick Installation Guide

TV-NVR104(V1)

# Table of Content

---

## **1 English**

1. Before you start
2. Hardware Drive Installation (Sold Separately)
3. System Installation
4. Soft Keyboard Instruction
5. System Setup
6. Camera Setup
7. Start Recording
8. Instant Playback

# 1. Before You Start

---

## Package Contents

- TV-NVR104 (Hard drive sold separately)
- 1 x 6 ft. Network cable
- Optical mouse
- CD-ROM (User's Guide)
- Quick Installation Guide
- Power adapter (48V DC, 1A)

## Minimum Requirements

- Display with VGA or HDMI connection
- SATA I/II HDD or SSD up to 4TB
- Network camera
- Phillips screwdriver
- Computer with CD-ROM drive and wired network port (for manual configuration)

## Compatible Hardware

### Compatible Camera List

For the best performance and interoperability, the following camera models are suggested:

TV-IP310PI	Outdoor 3MP Full HD PoE Day/Night Network Camera
TV-IP311PI	Outdoor 3MP Full HD PoE Dome Day/Night Network Camera
TV-IP312PI	Outdoor 3MP Full HD 1080p PoE IR Network Camera
TV-IP320PI	Outdoor 1.3 MP HD PoE IR Network Camera
TV-IP320PI2K	Outdoor 1.3 MP HD PoE IR Network Camera Twin Pack
TV-IP321PI	Outdoor 1.3 MP HD PoE Dome IR Network Camera
TV-IP322WI	Outdoor 1.3 MP HD WiFi IR Network Camera
TV-IP342PI	Outdoor 2MP Full HD Vari-Focal PoE Day/Night Dome Network Camera
TV-IP343PI	Outdoor 2MP Full HD Vari-Focal PoE Day/Night Network Camera
TV-IP430PI	Outdoor 2MP Full HD 1080p PoE+ IR Mini Speed Dome Network Camera
TV-IP450P	Outdoor 1.3 MP HD PoE+ Speed Dome Network Camera
TV-IP450PI	Outdoor 1.3 MP HD PoE IR Speed Dome Network Camera
TV-IP662PI	Megapixel HD PoE Day/Night PTZ Network Camera


**Note:** Visit <http://www.trendnet.com/info/TV-NVR104> for the most current camera compatibility list.

## Compatible Hard Drive


The **TV-NVR104** is compatible with 3.5" SATA I or SATA II hard drives. To ensure uninterrupted 24/7 recording, it is recommended that you select a drive rated for video or surveillance applications.

Mobile App

To remote viewing the live video on your mobile device, please go to the app store to search and install the **TRENDnet IPView**. Alternatively, scan the QR code to download and install the free TRENDnet IPView app.



Apple



Android

### 1.1 Camera Configuration

For Plug and Play IP Cameras, no configuration is required. Go to Section 2, Hard Drive Installation.

#### **Plug and Play IP Cameras**

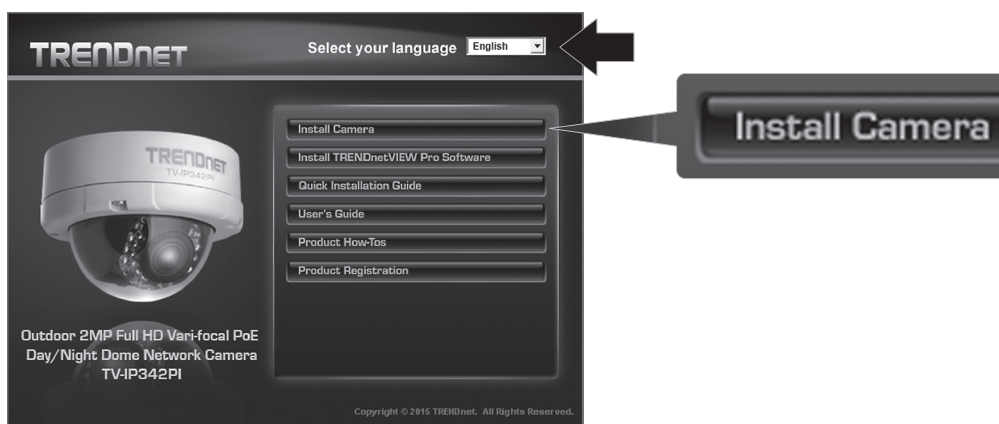
Model	Description
TV-IP310PI	Outdoor 3MP Full HD PoE Day/Night Network Camera
TV-IP311PI	Outdoor 3MP Full HD PoE Dome Day/Night Network Camera
TV-IP312PI	Outdoor 3MP Full HD 1080p PoE IR Network Camera
TV-IP320PI	Outdoor 1.3 MP HD PoE IR Network Camera
TV-IP320PI2K	Outdoor 1.3 MP HD PoE IR Network Camera Twin Pack
TV-IP321PI	Outdoor 1.3 MP HD PoE Dome IR Network Camera
TV-IP322WI	Outdoor 1.3 MP HD WiFi IR Network Camera
TV-IP430PI	Outdoor 2 MP Full HD 1080p PoE+ IR Mini Speed Dome Network Camera
TV-IP450P	Outdoor 1.3 MP HD PoE+ Speed Dome Network Camera
TV-IP450PI	Outdoor 1.3 MP HD PoE IR Speed Dome Network Camera

## 1.2 Camera Requiring Manual Configuration

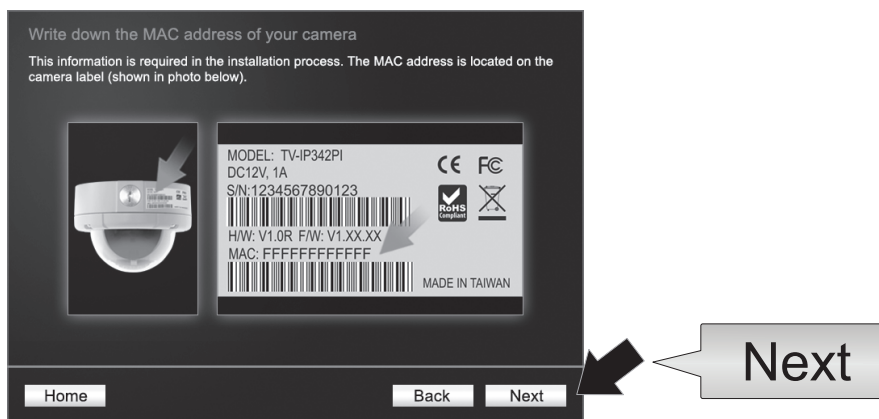
For manual configuration, follow the steps below. We recommend that you configure your camera using the CD-ROM that was included with your camera. If you are unable to do so, skip to the **Manual Camera Configuration without CD-ROM (Installation Wizard)** section below.

Model	Description
TV-IP342PI	Outdoor 2MP Full HD Vari-Focal PoE Day/Night Dome Network Camera
TV-IP343PI	Outdoor 2MP Full HD Vari-Focal PoE Day/Night Network Camera
TV-IP662PI	Megapixel HD PoE Day/Night PTZ Network Camera

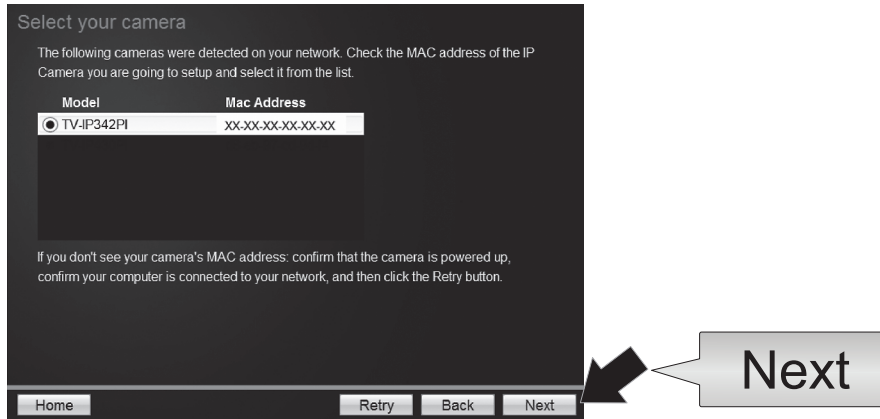
1. For manual installation, set your computer's IP address to a static address. Use the IP address 192.168.10.10/255.255.255.0 and leave the default gateway and DNS settings blank.
2. Connect a network cable from your computer to a LAN port on your **TV-NVR104**.
3. Connect the power adaptor to the **TV-NVR104** and plug the adaptor into an electrical outlet.
4. Connect your camera to the **TV-NVR104** and wait 30 seconds for the camera to power on.
5. Insert the CD-ROM that was included with your camera into your computer.
6. Select your language from the dropdown menu.
7. Select **Install Camera**.



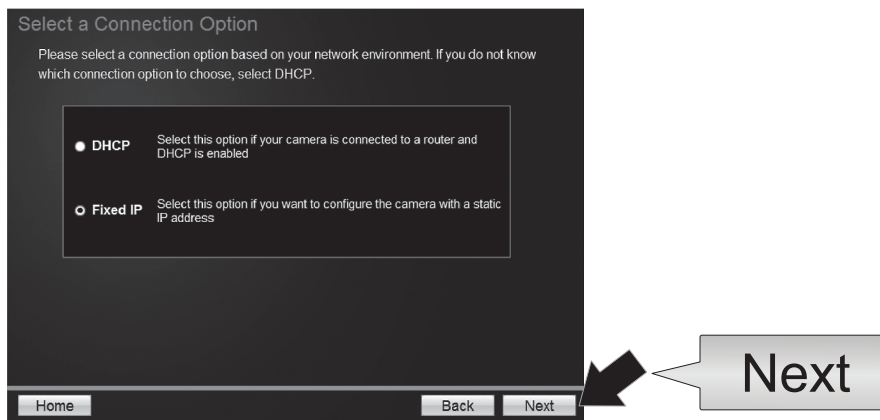
8. Write down the MAC ID of the camera from the white label on the camera, then click **Next**.



9. Select your camera from the list, then click **Next**.



10. Select **Fixed IP** and click **Next**.



11. Enter the IP Address for the Camera. The IP default range for the NVR unit is: 192.168.10.XX  
We recommended that you assign IP values that match the default range of the TV-NVR104 (192.168.10.1 – 192.168.10.254). Except the default IP of TV-NVR104 (192.168.10.60)

- Example:** Camera 1: 192.168.10.50  
Camera 2: 192.168.10.51  
Camera 3: 192.168.10.52



12. Click **Next**.

13. Enter the Admin password. The default password is **admin**. If this is your first time logging in, you will need to change the password of the camera. The new password must be between 8 and 32 characters (alphanumeric: a-z, A-Z, 0-9, !, @, #, \$). Confirm the new password and click **Next**.

Change Password

You **MUST** change the default password of the camera.  
Enter the default password: admin  
Enter your new password: must be between 8 and 32 characters. (Alphanumeric: a-z, A-Z, 0-9, Special Characters: !, @, #, \$, %)

Admin ID	admin
Password	*****
<input checked="" type="checkbox"/> Change Password	
New password	*****
Confirm new password	*****

Home Back Next

Next

14. Camera configuration is now complete. Click **Next**.  
15. Your camera is now ready for manual installation with the **TV-NVR104**. Click **Finish** to close the program.

### **Manual Camera Configuration without CD-ROM (Installation Wizard)**

1. Set your computer's IP address to a static address. Use the IP address 192.168.10.10/255.255.255.0 and leave the default gateway and DNS settings blank.
2. Connect a network cable from your computer to a LAN port on your **TV-NVR104**.
3. Connect the power adaptor to the **TV-NVR104** and plug the adaptor into an electrical outlet.
4. Connect your first camera (one at a time only) to the **TV-NVR104** and wait 30 seconds for the camera to boot up.
5. Open a web browser, and type 192.168.10.30 into the address bar. This is the default IP address of the camera.
6. Log in to your camera. If your camera is new, or if the camera has been reset, the default login credentials are:

**Username: admin**

**Password: admin**

7. Change the IP address of the camera so that the default address (192.168.10.30) is not used.
8. Disconnect the camera, and repeat steps 1 through 3 for each camera that will be used. It is recommended that the IP addresses assigned to each camera follow in sequential order, although this is not required.

**Example:** Camera 1: 192.168.10.50

Camera 2: 192.168.10.51

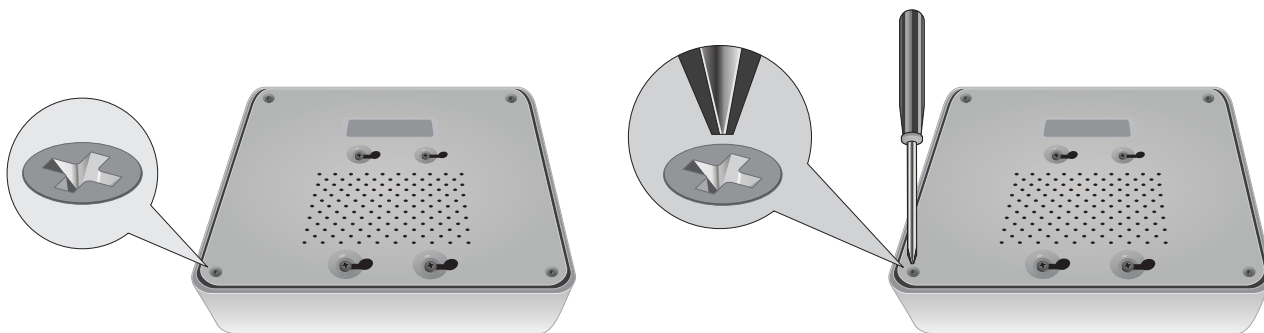
Camera 3: 192.168.10.52

## 2. Hardware Drive Installation (Sold Separately)

### Note:

- Static electricity can damage the **TV-NVR104**. Before handling the unit, discharge any static electricity by touching a metal object, or use an anti-static wrist strap.
- The **TV-NVR104** supports 3.5" SATA I and II drives up to 4TB.

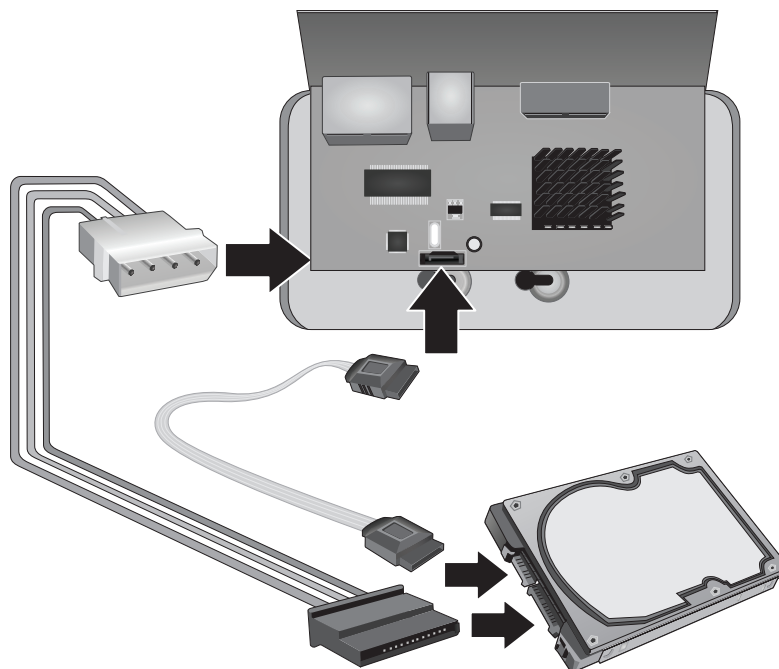
1. Remove the four retaining screws from the bottom panel of the **TV-NVR104**.



2. The top cover is slotted vertically. From the back of the unit, gently slide the cover up to separate it from the lower panel.

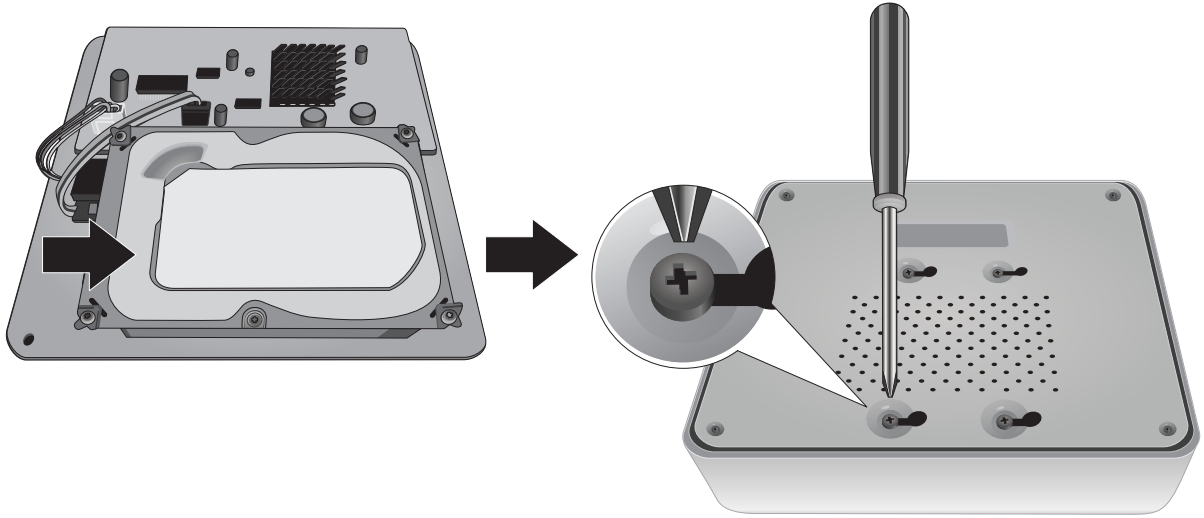


3. Attach the SATA cable to the hard drive (sold separately) and control board. SATA connectors are keyed to prevent improper installation.





4. Mount the hard drive to the **TV-NVR104**'s drive bay using the mounting screws included with your hard drive.

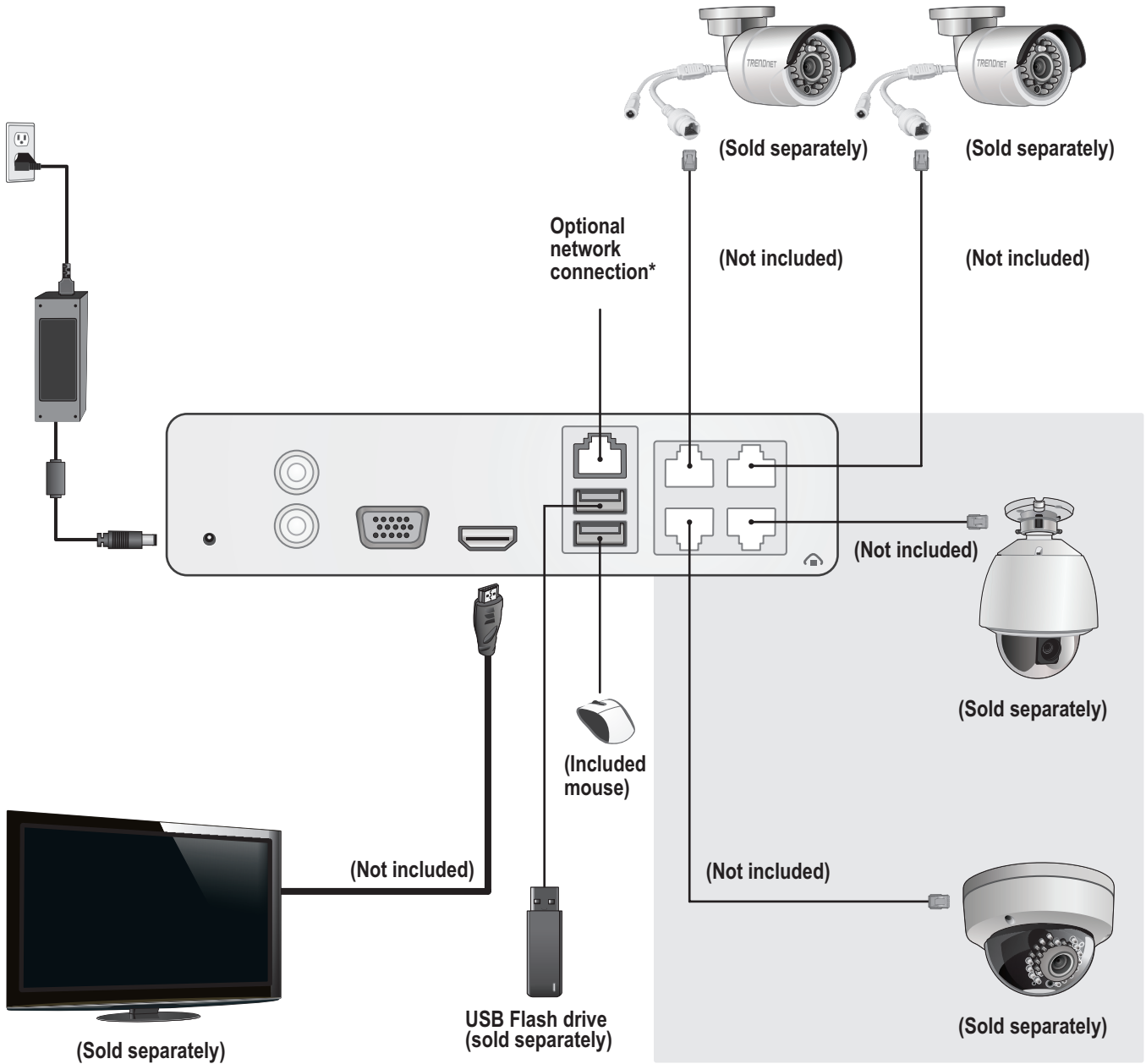


5. Reattach the top cover to the unit. Make sure the lower panel lines up with the slots on the cover.



### 3. System Installation

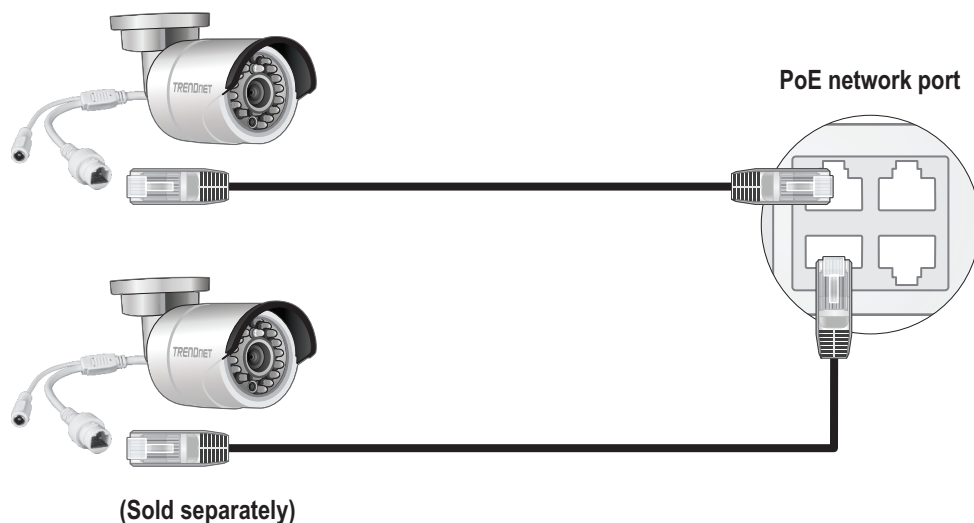
**Note:** The following installation steps support a stand-alone setup WITHOUT a wired connection to a network. To set up the NVR using a wired network connection (for remote access to NVR), proceed to the User's Guide for the appropriate setup steps (do not continue with this section).



### 3.1 Camera Installation (Sold Separately)

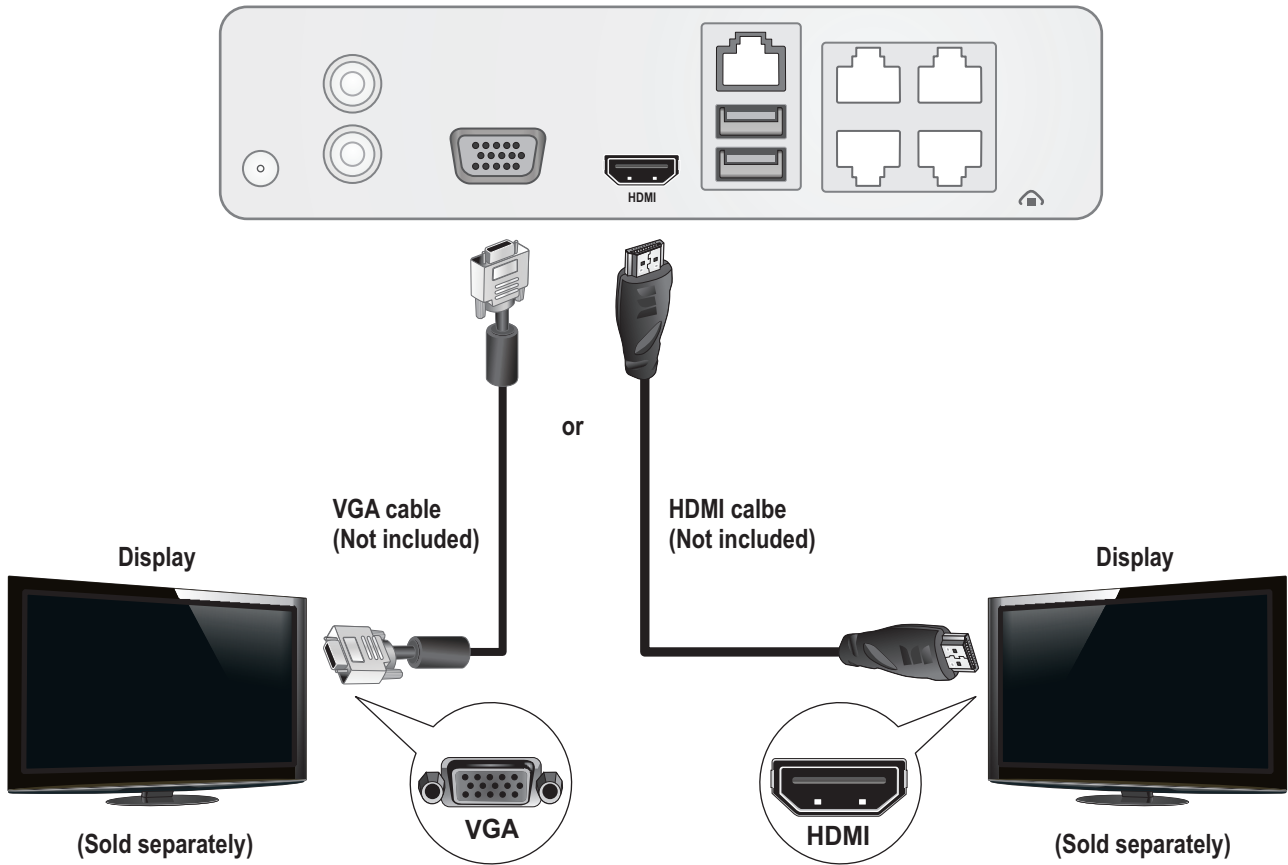
1. Connect the IP camera to a PoE network port on the **TV-NVR104**. The use of non-PoE cameras is supported by the **TV-NVR104** but the camera will require an external power supply.
2. If you are using camera model TV-IP450P or TV-IP450PI, a PoE injector is required (one included with the camera). Camera model TV-IP430PI also requires a PoE+ injector (sold separately). For all other models, no additional steps are required, please continue with the camera configuration.

#### PoE cameras



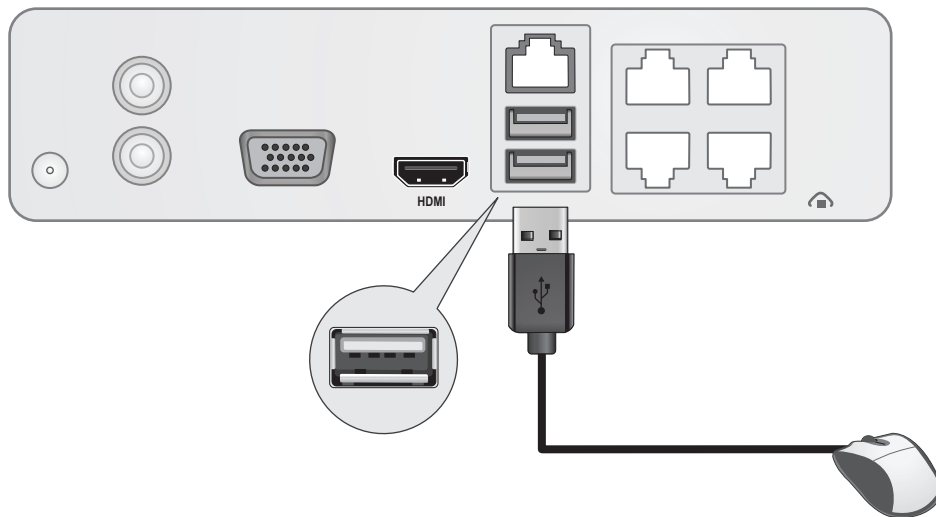
### 3.2 Connect the Monitor

1. Using an HDMI or VGA cable, connect the **TV-NVR104** to your monitor.



### 3.3 Connect the Mouse

Plug the optical mouse into the **TV-NVR104**.



### 3.4 Connect the Power

1. Connect the power adapter to the **TV-NVR104** power port.
2. Connect the power cable to the power adapter.
3. Plug the power cable into an electrical outlet.
4. (Optional) Connect a ground wire to the grounding point.



### 4. Soft Keyboard Instruction

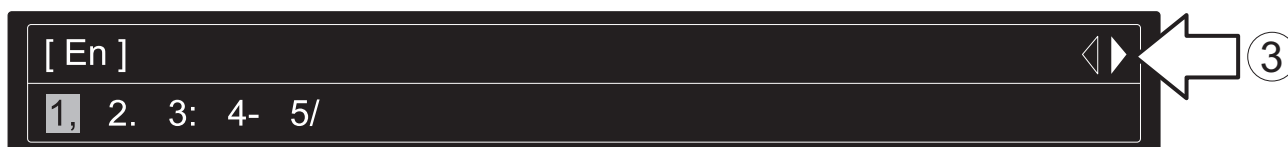
1. Click **En** to change the keyboard style.



List of Keyboard styles:

<b>En</b>	Lower case text
<b>A</b>	Upper case text
<b>123</b>	Numeric keyboard
<b>.,</b>	Special characters

2. Click **.,** to enter special characters.
3. Click **◀** or **▶** to choose different symbols.



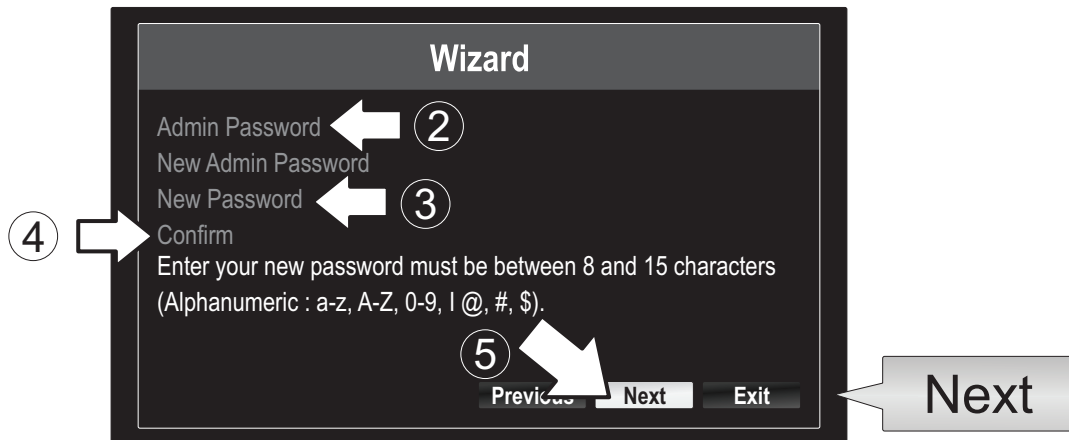
4. Click **a** or **A** to switch between uppercase and lowercase.

## 5. System Setup

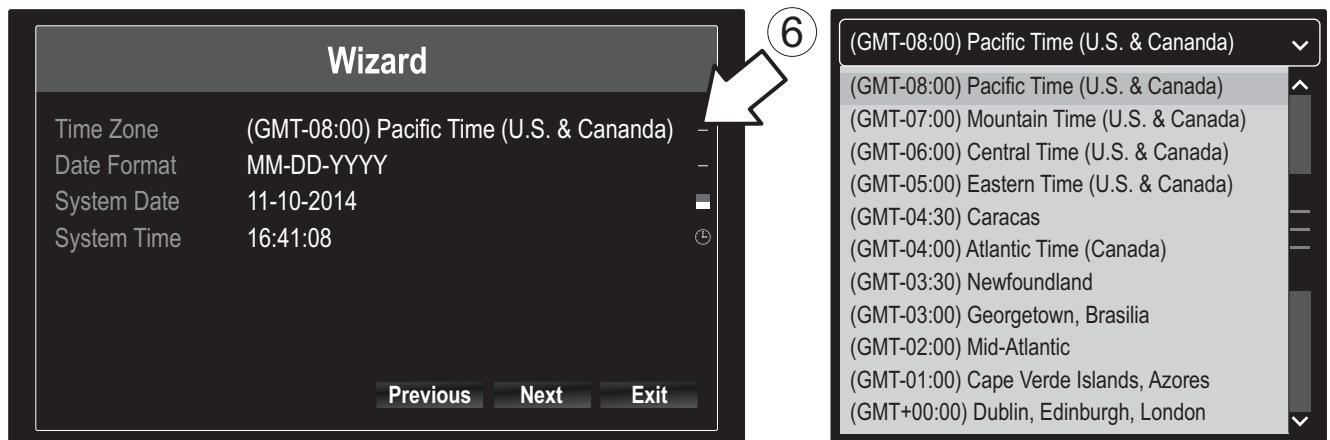
1. The setup wizard will start after the **TV-NVR104** is powered up. Click **Next**.



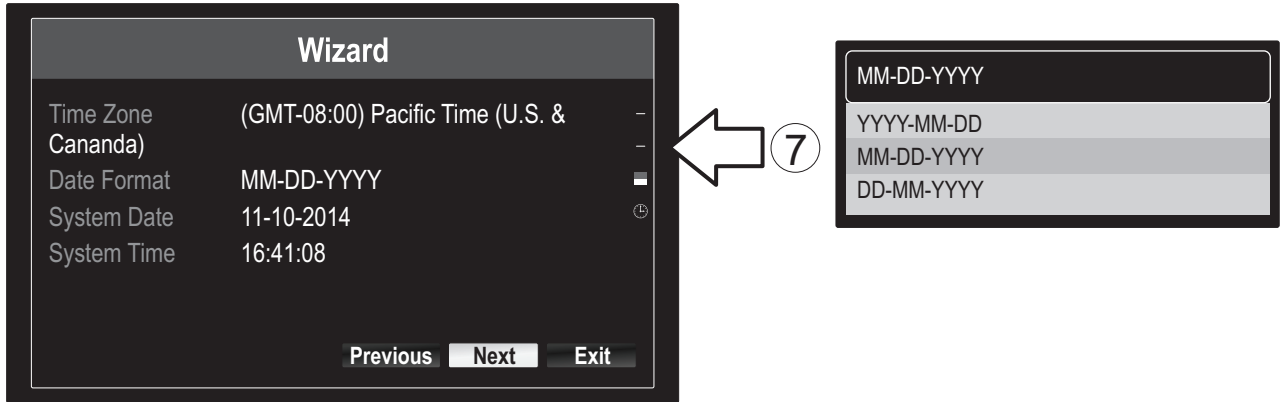
2. Enter the default administrator password: **admin**.
3. Enter a new admin password.
4. Enter the new password again in the **Confirm** field.
5. Click **Next**.



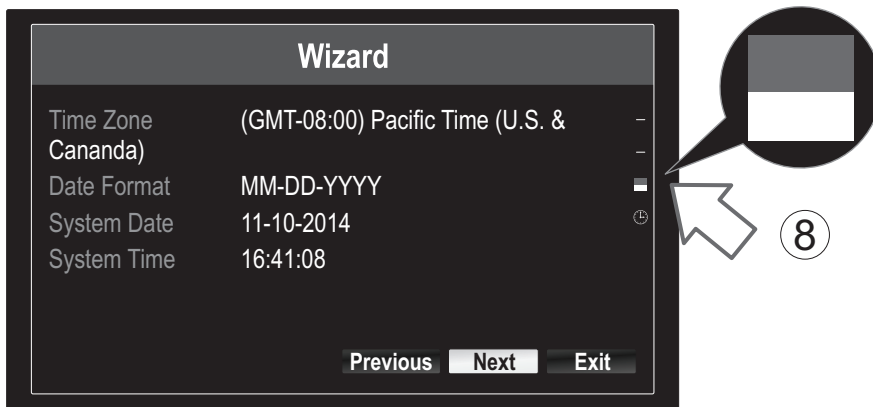
6. Click the selection list to the right of **Time Zone** and select your time zone.



7. Click the selection list to the right of **Date Format** to choose a format.



8. Click the selection list to the right of **System Date**.



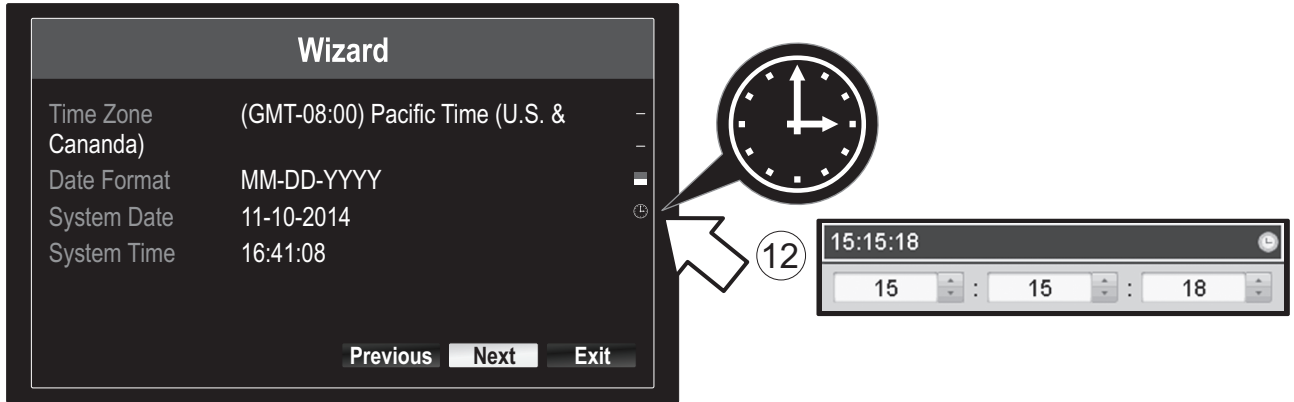
9. Select the month by clicking on left or right arrow.



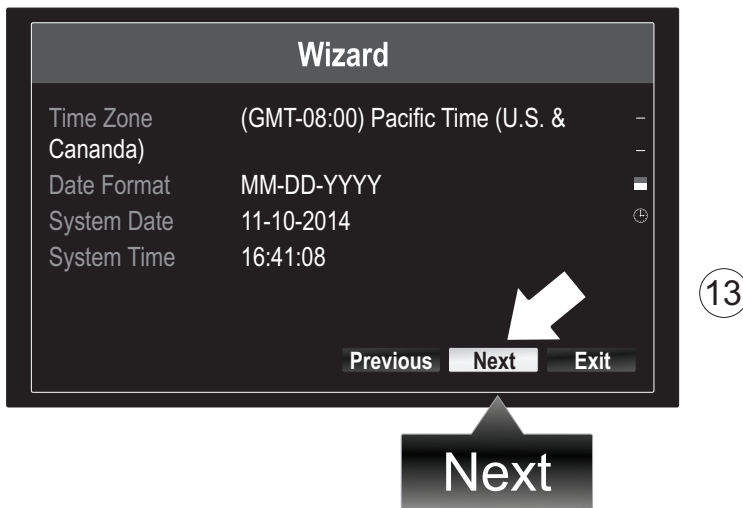
10. Select the day by clicking on the date.

11. Select the year by clicking on left or right arrow.

12. Click the selection list to the right of **System Time** and then enter the time using a 24-hour format.

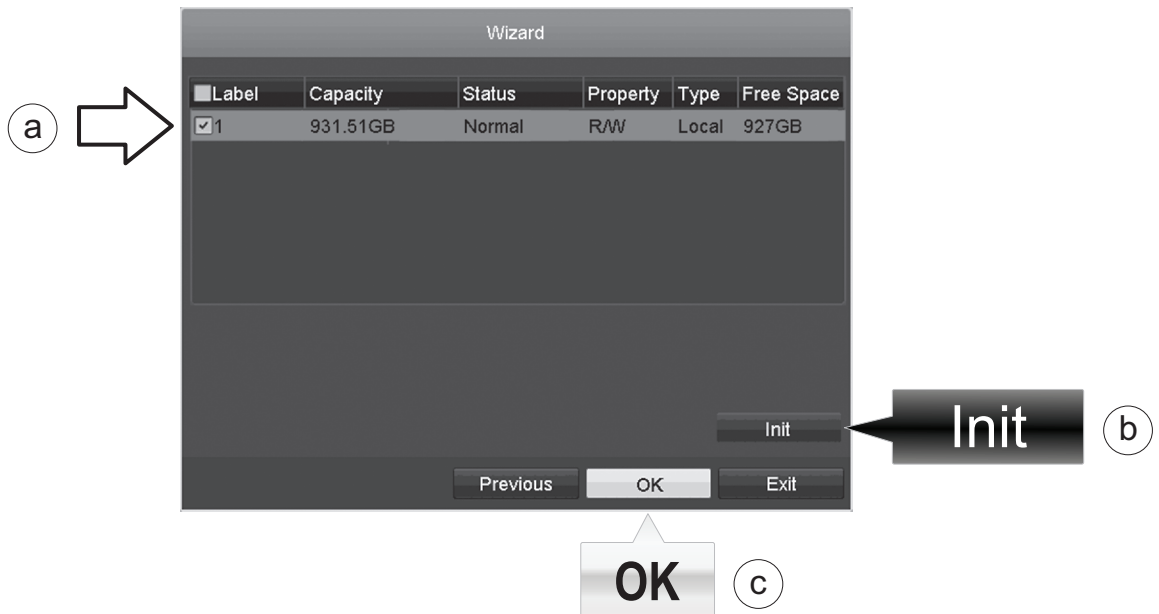


13. Click **Next**.



14.

- a) Select your hard drive.
- b) Click **Init** to initiate your hard drive.
- c) When the initiation has completed, click **OK** to exit the wizard.





## 6. Camera Setup

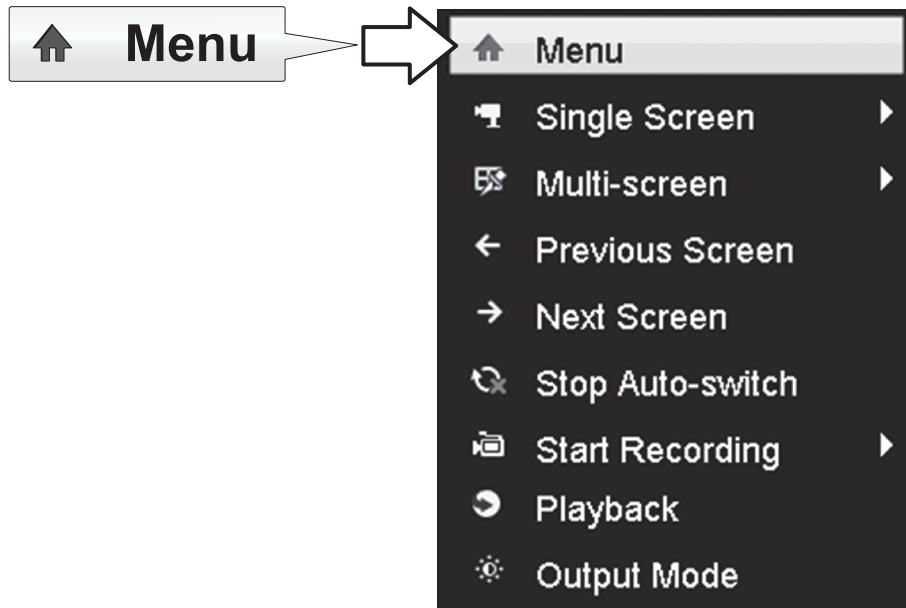
1. If your TRENDnet camera is Plug-and-Play compatible, as listed on the table below, live video will now be playing. No further setup is required. Proceed to the next section.



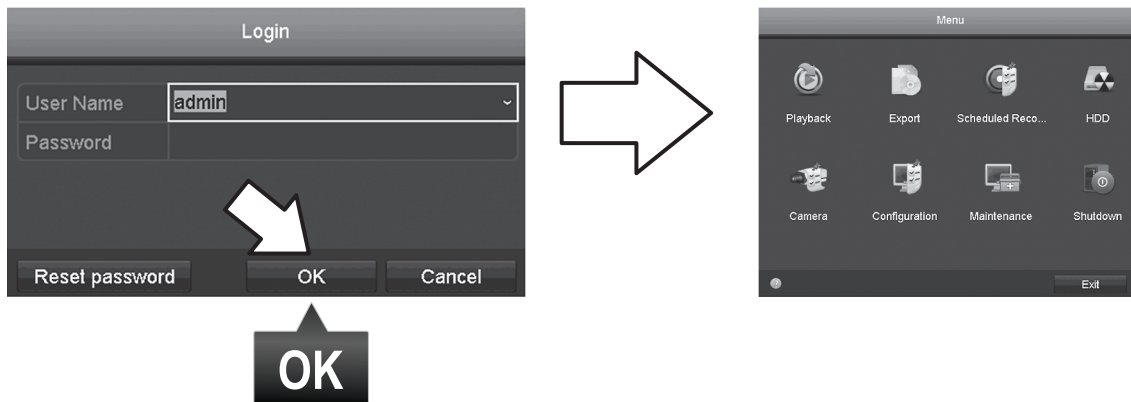
### Plug and Play Cameras

TV-IP310PI	Outdoor 3MP Full HD PoE Day/Night Network Camera
TV-IP311PI	Outdoor 3MP Full HD PoE Dome Day/Night Network Camera
TV-IP312PI	Outdoor 3MP Full HD 1080p PoE IR Network Camera
TV-IP320PI	Outdoor 1.3 MP HD PoE IR Network Camera
TV-IP320PI2K	Outdoor 1.3 MP HD PoE IR Network Camera Twin Pack
TV-IP321PI	Outdoor 1.3 MP HD PoE Dome IR Network Camera
TV-IP322WI	Outdoor 1.3 MP HD WiFi IR Network Camera
TV-IP430PI	Outdoor 2 MP Full HD 1080p PoE+ IR Mini Speed Dome Network Camera
TV-IP450P	Outdoor 1.3 MP HD PoE+ Speed Dome Network Camera
TV-IP450PI	Outdoor 1.3 MP HD PoE IR Speed Dome Network Camera

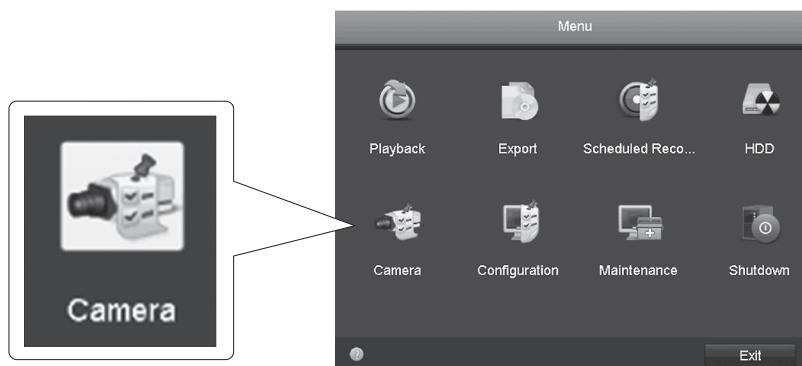
2. If your Plug-and-Play camera is not showing live video, please confirm that the camera is properly installed, and give the system a few minutes to complete initialization.
3. If your camera is not listed on the table, continue with the following steps to manually set up your camera.
4. Right-click the mouse to bring up the popup menu. Click on the **Menu** button.



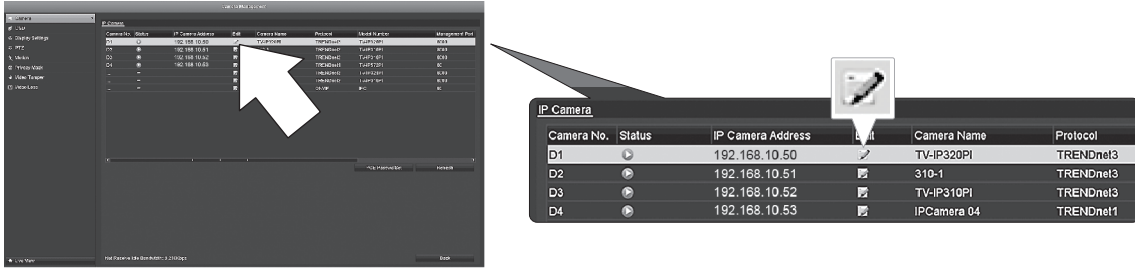
5. Enter the **TV-NVR104** password and click on **OK** to bring up the main menu.



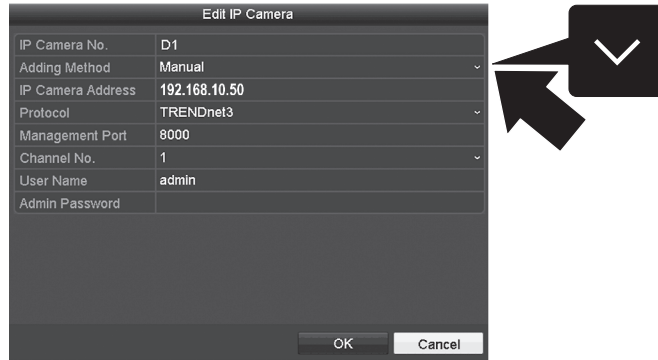
6. Click the **Camera Settings** icon on the **Main Menu**.



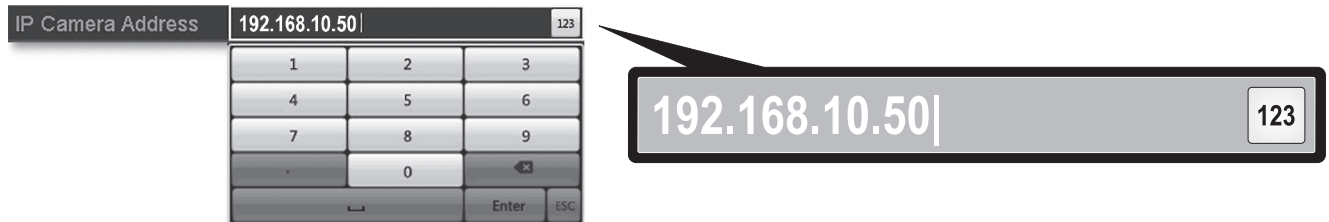
7. Click the **Edit** icon for your camera. If you are installing multiple cameras, please confirm you have selected the correct device.



8. From the **Edit IP Camera** page, select the **Adding Method** menu, and click on **Manual**.



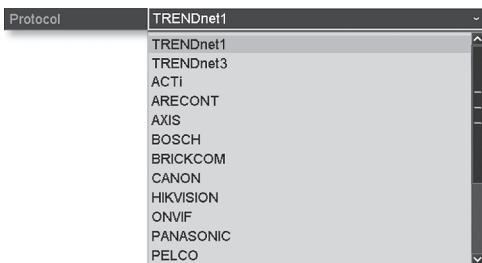
9. Enter the camera's IP address.



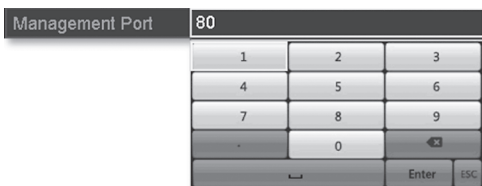
10. Find your TRENDnet camera from the table below, and note the unit's protocol and port information.

Model	Protocol	Default Port	Description
TV-IP342PI	ONVIF	80	Outdoor 2MP Full HD Vari-Focal PoE Day/Night Dome Network Camera
TV-IP343PI	ONVIF	80	Outdoor 2MP Full HD Vari-Focal PoE Day/Night Network Camera
TV-IP662PI	TRENDnet1	80	Megapixel HD PoE Day/Night PTZ Network Camera

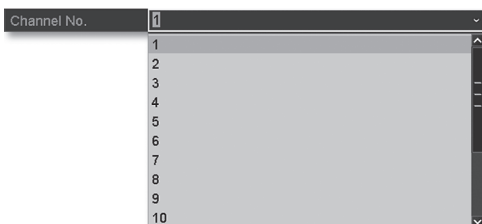
11. Set the camera protocol according to the table in step 10.



12. Set the management port according to the table in step 10.



13. The NVR defaults to your camera's highest set video stream (Stream 1, listed as "Channel No.1"). To use a lower camera stream, select it from the menu.



14. Enter the camera's username. For TRENDnet cameras, the username is **admin**.



15. Enter the camera's password that was set up during the camera configuration.



16. Click **OK** to save your settings.

## 7. Start Recording

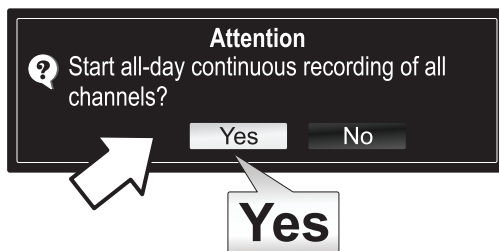
1. In Live View, right click anywhere on the screen to access the menu options.



2. Click **Start Recording** and then choose between **Continuous Record** and **Motion Detection Record**.

3. **Continuous Record** is the recommended setting. **Motion Detection Record** mode requires advanced configuration from the main menu before motion recording will be activated. To configure motion recording, please refer to the User's Guide.


4. Click **Yes** to confirm. (For more advanced video recording features, please see the User's Guide for more details.)



## 8. Instant Playback

1. In Live View, left-click on the camera video you want to review.



2. Click the play icon  to playback the last 5 minutes of recording.



3. Detailed playback is available from the main menu. Please see the User's Guide for more advanced video playback features.

# Declaration of Conformity

**TRENDNET**<sup>®</sup>

## Manufacturer's Name and Address

TRENDnet, Inc.  
20675 Manhattan Place  
Torrance, CA 90501 USA



## Product Information:

**Model Number:** TV-NVR104  
**Product Name:** 4-Channel HD PoE NVR

**Trade Name:** TRENDnet

TRENDnet hereby declare that the product is in compliance with the essential requirements and other relevant provisions under our sole responsibility.

**Safety** EN 60950-1: 2006 + A11: 2009: +A1: 2010 + A12: 2011 + A2: 2013

**EMC**  
EN 55022: 2010 + AC: 2011 Class B  
EN 50130-4 : 2011  
EN 61000-3-2: 2006 + A2: 2009  
EN 61000-3-3: 2008

This product is herewith confirmed to comply with the Directives.

**Directives:**  
Low Voltage Directive 2006/95/EC  
EMC Directive 2004/108/EC  
RoHS Directive 2011/65/EU  
REACH Regulation (EC) No. 1907/2006

Person responsible for this declaration.

Place of Issue: Torrance, California, USA

Date: November 26, 2014

Name: Sonny Su

Title: Director of Technology

Signature:

A handwritten signature in black ink, appearing to read 'Sonny Su', is written over a horizontal line.

## Safety notes



Before using your TRENDnet device for the first time, it is essential to read and understand all safety and operating instructions. Keep instructions in a safe place for future reference.

Some TRENDnet products are rated for outdoor applications and can sustain certain weather conditions.

Please refer to the product's Ingress Protection (IP) rating and the operating humidity and temperature range.

### **DANGER due to electricity**

Warning: Never open TRENDnet devices. Doing so poses the risk of electric shock!

The device is voltage free only when unplugging from the mains power supply.

No physical maintenance of TRENDnet devices is required.

If damage occurs, disconnect the TRENDnet device from the power outlet and contact a qualified technician **ONLY**.

Damage is defined as:

- if the power cable/plug is damaged
- if the device has been submerged in liquid (e.g. rain or water; except products that are rated for outdoor applications)
- if the device is inoperable
- if there is damage to the housing of the device

Only operate TRENDnet devices using a mains power supply.

To disconnect devices from the mains supply, remove the device itself or its mains plug from the power outlet. The power outlet and all connected network devices should be easily accessible so that you can pull the mains plug quickly if needed.

TRENDnet devices are designed for indoor use only and in a dry location (except those that are rated for outdoor applications)

To clean a TRENDnet device, disconnect it from the mains supply first and only use a dry towel.

### **DANGER due to overheating**

Never expose TRENDnet devices to extreme heat (e.g. direct sunlight, fire, or other heat sources). For outdoor rated products, please install the product in an environment that is within the product's operating temperature and humidity range.

Do not interlock multiple TRENDnet devices.

Only install TRENDnet devices in locations with adequate ventilation (slots and openings on the housing are used for ventilation).

- Do not cover TRENDnet devices when operating.
- Do not place any objects on TRENDnet devices.
- Do not insert any foreign objects into the openings of TRENDnet devices.
- Do not place TRENDnet devices next to an open flame (e.g. fire or candles).
- Do not expose TRENDnet devices to direct heat (e.g. radiator or direct sunlight).



### **GPL/LGPL General Information**

This TRENDnet product includes free software written by third party developers. These codes are subject to the GNU General Public License ("GPL") or GNU Lesser General Public License ("LGPL"). These codes are distributed WITHOUT WARRANTY and are subject to the copyrights of the developers. TRENDnet does not provide technical support for these codes. The details of the GNU GPL and LGPL are included in the product CD-ROM.

Please also go to (<http://www.gnu.org/licenses/gpl.txt>) or (<http://www.gnu.org/licenses/lgpl.txt>) for specific terms of each license.

The source codes are available for download from TRENDnet's web site ([http://trendnet.com/downloads/list\\_gpl.asp](http://trendnet.com/downloads/list_gpl.asp)) for at least three years from the product shipping date.

You could also request the source codes by contacting TRENDnet.

20675 Manhattan Place, Torrance, CA 90501, USA. Tel: +1-310-961-5500 Fax: +1-310-961-5511

### **Informations générales GPL/LGPL**

Ce produit TRENDnet comprend un logiciel libre gratuit par des programmeurs tiers. Ces codes sont sujet à la GNU General Public License ("GPL" Licence publique générale GNU) ou à la GNU Lesser General Public License ("LGPL" Licence publique générale limitée GNU). Ces codes sont distribués SANS GARANTIE et sont sujets aux droits d'auteurs des programmeurs. TRENDnet ne fournit pas d'assistance technique pour ces codes. Les détails concernant les GPL et LGPL GNU sont repris sur le CD-ROM du produit.

Veuillez également vous rendre en (<http://www.gnu.org/licenses/gpl.txt>) ou en (<http://www.gnu.org/licenses/lgpl.txt>) pour les conditions spécifiques de chaque licence.

Les codes source sont disponibles au téléchargement sur le site Internet de TRENDnet web site ([http://trendnet.com/downloads/list\\_gpl.asp](http://trendnet.com/downloads/list_gpl.asp)) durant au moins 3 ans à partir de la date d'expédition du produit.

Vous pouvez également demander les codes source en contactant TRENDnet.

20675 Manhattan Place, Torrance, CA 90501, USA. Tel: +1-310-961-5500 Fax: +1-310-961-5511

### **Allgemeine Informationen zu GPL/LGPL**

Dieses Produkt enthält die freie Software "netfilter/iptables" (© 2000-2004 netfilter project <http://www.netfilter.org>) und die freie Software „Linux „mtd“ (Memory Technology Devices) Implementation (© 2000 David Woodhouse), erstmals integriert in Linux Version 2.4.0-test 3 v. 10.07.2000 (<http://www.kernel.org/pub/linux/kernel/v2.4/old-test-kernels/linux-2.4.0-test3.tar.bz2>), sowie weitere freie Software. Sie haben durch den Erwerb dieses Produktes keinerlei Gewährleistungsansprüche gegen die Berechtigten an der oben genannten Software erworben; weil diese die Software kostenfrei lizenzieren gewähren sie keine Haftung gemäß unten abgedruckten Lizenzbedingungen. Die Software darf von jedermann im Quell- und Objektcode unter Beachtung der Lizenzbedingungen der GNU General Public License Version 2, und GNU Lesser General Public License (LGPL) vervielfältigt, verbreitet und verarbeitet werden.

Die Lizenz ist unten im englischsprachigen Originalwortlaut wiedergegeben. Eine nichtoffizielle Übersetzung in die deutsche Sprache finden Sie im Internet unter (<http://www.gnu.de/documents/gpl-2.0.de.html>). Eine allgemeine öffentliche GNU Lizenz befindet sich auch auf der mitgelieferten CD-ROM.

Sie können Quell- und Objektcode der Software für mindestens drei Jahre auf unserer Homepage [www.trendnet.com](http://www.trendnet.com) im Downloadbereich ([http://trendnet.com/langen/downloads/list\\_gpl.asp](http://trendnet.com/langen/downloads/list_gpl.asp)) downloadend. Sofern Sie nicht über die Möglichkeit des Downloads verfügen können Sie bei TRENDnet.

20675 Manhattan Place, Torrance, CA 90501 -U.S.A.-, Tel.: +1-310-961-5500, Fax: +1-310-961-5511 die Software anfordern.

### **Información general sobre la GPL/LGPL**

Este producto de TRENDnet incluye un programa gratuito desarrollado por terceros. Estos códigos están sujetos a la Licencia pública general de GNU ("GPL") o la Licencia pública general limitada de GNU ("LGPL"). Estos códigos son distribuidos SIN GARANTÍA y están sujetos a las leyes de propiedad intelectual de sus desarrolladores. TRENDnet no ofrece servicio técnico para estos códigos. Los detalles sobre las licencias GPL y LGPL de GNU se incluyen en el CD-ROM del producto.

Consulte también el (<http://www.gnu.org/licenses/gpl.txt>) ó el (<http://www.gnu.org/licenses/lgpl.txt>) para ver las cláusulas específicas de cada licencia.

Los códigos fuentes están disponibles para ser descargados del sitio Web de TRENDnet ([http://trendnet.com/downloads/list\\_gpl.asp](http://trendnet.com/downloads/list_gpl.asp)) durante por lo menos tres años a partir de la fecha de envío del producto.

También puede solicitar el código fuente llamando a TRENDnet.

20675 Manhattan Place, Torrance, CA 90501, USA. Tel: +1-310-961-5500 Fax: +1-310-961-5511

### **Общая информация о лицензиях GPL/LGPL**

В состав данного продукта TRENDnet входит бесплатное программное обеспечение, написанное сторонними разработчиками. Это ПО распространяется на условиях лицензий GNU General Public License ("GPL") или GNU Lesser General Public License ("LGPL"). Программы распространяются БЕЗ ГАРАНТИИ и охраняются авторскими правами разработчиков. TRENDnet не оказывает техническую поддержку этого программного обеспечения. Подробное описание лицензий GNU GPL и LGPL можно найти на компакт-диске, прилагаемом к продукту.

В пунктах (<http://www.gnu.org/licenses/gpl.txt>) и (<http://www.gnu.org/licenses/lgpl.txt>) изложены конкретные условия каждой из лицензий.

Исходный код программ доступен для загрузки с веб-сайта TRENDnet ([http://trendnet.com/downloads/list\\_gpl.asp](http://trendnet.com/downloads/list_gpl.asp)) в течение, как минимум, трех лет со дня поставки продукта.

Russian Technical Support: 7 (495) 276-22-90

Телефон технической поддержки: 7 (495) 276-22-90

Кроме того, исходный код можно запросить по адресу TRENDnet.

20675 Manhattan Place, Torrance, CA 90501, USA. Tel: +1-310-961-5500 Fax: +1-310-961-5511

### **GPL/LGPL informações Gerais**

Este produto TRENDnet inclui software gratuito desenvolvido por terceiros. Estes códigos estão sujeitos ao GPL (GNU General Public License) ou ao LGPL (GNU Lesser General Public License). Estes códigos são distribuídos SEM GARANTIA e estão sujeitos aos direitos autorais dos desenvolvedores. TRENDnet não presta suporte técnico a estes códigos. Os detalhes do GNU GPL e do LGPL estão no CD-ROM do produto. Favor acessar <http://www.gnu.org/licenses/gpl.txt> ou <http://www.gnu.org/licenses/lgpl.txt> para os termos específicos de cada licença.

Os códigos fonte estão disponíveis para download no site da TRENDnet ([http://trendnet.com/langen/downloads/list\\_gpl.asp](http://trendnet.com/langen/downloads/list_gpl.asp)) por pelo menos três anos da data de embarque do produto.

Você também pode solicitar os códigos fonte contactando TRENDnet, 20675 Manhattan Place, Torrance, CA 90501, USA. Tel: +1-310-961-5500, Fax: +1-310-961-5511.

### **GPL/LGPL üldinformatsioon**

See TRENDneti toode sisaldab vaba tarkvara, mis on kirjutatud kolmanda osapoole poolt. Koodid on allutatud GNU (General Public License) Üldise Avaliku Litsentsi (GPL) või GNU (Lesser General Public License) ("LGPL") Vähem Üldine Avalik Litsentsiga. Koode vahendatakse ILMA GARANTIITA ja need on allutatud arendajate poolt. TRENDnet ei anna koodidele tehnilist tuge. Detailsemat infot GNU GPL ja LGPL kohta leiate toote CD-ROMil. Infot mõlema litsentsi spetsiifiliste terminite kohta leiate (<http://www.gnu.org/licenses/gpl.txt>) või (<http://www.gnu.org/licenses/lgpl.txt>).

Infot mõlema litsentsi spetsiifiliste terminite kohta leiate (<http://www.gnu.org/licenses/gpl.txt>) või (<http://www.gnu.org/licenses/lgpl.txt>). Lähtekoodi on võimalik alla laadida TRENDneti kodulehelt ([http://trendnet.com/langen/downloads/list\\_gpl.asp](http://trendnet.com/langen/downloads/list_gpl.asp)) kolme aasta jooksul alates toote kättesaamise kuupäevast.

Samuti võite lähtekoodi paluda TRENDnet'ilt, 20675 Manhattan Place, Torrance, CA 90501, USA. Tel: +1-310-961-5500, Fax: +1-310-961-5511.

**Limited Warranty**

TRENDnet warrants its products against defects in material and workmanship, under normal use and service, for the following length of time from the date of purchase. Warranty: 2 year limited warranty (When Applicable: 1 year warranty for power adapter, power supply, and cooling fan components.) Visit [TRENDnet.com](http://TRENDnet.com) to review the full warranty policy, rights, and restrictions for this product.

**Garantie Limitée**

TRENDnet garantit ses produits contre les défauts matériels et de fabrication, dans des conditions normales d'utilisation et de service, pour les durées suivantes, à compter de la date de leur achat. Limitée: 2 ans de garantie limitée (Si applicable: 1 an de garantie sur l'adaptateur secteur, l'alimentation en énergie et les composants du ventilateur de refroidissement.) Visitez [TRENDnet.com](http://TRENDnet.com) pour lire la politique complète de garantie, les droits et les restrictions s'appliquant à ce produit.

**Begrenzte Garantie**

TRENDnet garantiert, dass seine Produkte bei normaler Benutzung und Wartung während der nachfolgend genannten Zeit ab dem Kaufdatum keine Material- und Verarbeitungsschäden aufweisen. Garantie: 2-Jahres-Garantie (Soweit zutreffend: 1 Jahr Garantie für Netzteil, Stromkabel und Ventilator.) Alle Garantiebedingungen, Rechte und Einschränkungen für dieses Produkt finden Sie auf [TRENDnet.com](http://TRENDnet.com).

**Garantía Limitada**

TRENDnet garantiza sus productos contra defectos en los materiales y mano de obra, bajo uso y servicio normales, durante el siguiente periodo de tiempo a partir de la fecha de compra. Garantía: 2 años (Cuando proceda: 1 año de garantía para componentes de adaptadores de corriente, fuente de alimentación y ventiladores de refrigeración.) Visite [TRENDnet.com](http://TRENDnet.com) para revisar la política de garantía, derechos y restricciones para este producto.

**Ограниченная гарантия**

Гарантия компании TRENDnet распространяется на дефекты, возникшие по вине производителя при соблюдении условий эксплуатации и обслуживания в течение установленного периода с момента приобретения (Продукт: Ограниченная гарантия; Двухлетняя ограниченная гарантия (Распространяется: На протяжении 1 года на силовые адаптеры, источники питания и компоненты вентилятора охлаждения). Полную версию гарантийных обязательств, а также права пользователя и ограничения при эксплуатации данного продукта смотрите на вебсайте [www.trendnetrussia.ru](http://www.trendnetrussia.ru)

**Garantia Limitada**

TRENDnet garante seus produtos contra defeitos em material e mão de obra, sob condições normais de uso e serviço, pelo seguinte tempo a partir da data da compra. Garantia: Garantia limitada de 2 anos. (Quando aplicável: 1 ano de garantia para adaptador de tensão, fonte e componentes de ventoinhas). Visite [TRENDnet.com](http://TRENDnet.com) para conhecer a política de garantia completa, direitos e restrições para este produto.)

**Piiratud garantii**

TRENDneti tavatingimustes kasutatavatel ja hooldatavatel toodetel on järgmise ajavahemiku jooksul (alates ostukuupäevast) tootmis- ja materjalidefektide garantii. garantii: 2-aastane piiratud garantii. (Garantii kohaldatakse: toiteadapteri, toiteallika ja jahutusventilaatori osadel on 1-aastane garantii.) Täisgarantii põhimõtete, õiguste ja piirangute kohta leiate lisateavet saidilt [TRENDnet.com](http://TRENDnet.com).

**Гарантія компанії**

Гарантія компанії TRENDnet поширюється на дефекти, що виникли з вини виробника, при дотриманні умов експлуатації та обслуговування протягом встановленого періоду з моменту придбання. (Продукт: Обмежена гарантія: 3 роки обмеженої гарантії (Поширюється: Протягом 1 року на силові адаптери, джерела живлення і компоненти вентилятора охолодження) Повну версію гарантійних зобов'язань, а також права користувача та обмеження при експлуатації даного продукту дивіться на вебсайті [TRENDnet.com](http://TRENDnet.com).

**Certifications**

This device can be expected to comply with Part 15 of the FCC Rules provided it is assembled in exact accordance with the instructions provided with this kit.

Operation is subject to the following conditions:

- (1) This device may not cause harmful interference
- (2) This device must accept any interference received including interference that may cause undesired operation.



Waste electrical and electronic products must not be disposed of with household waste. Please recycle where facilities exist. Check with your Local Authority or Retailer for recycling advice.

Applies to PoE Products Only: This product is to be connected only to PoE networks without routing to the outside plant.

**Note**

The Manufacturer is not responsible for any radio or TV interference caused by unauthorized modifications to this equipment. Such modifications could void the user's authority to operate the equipment.

**Advertencia**

En todos nuestros equipos se mencionan claramente las características del adaptador de alimentación necesario para su funcionamiento. El uso de un adaptador distinto al mencionado puede producir daños físicos y/o daños al equipo conectado. El adaptador de alimentación debe operar con voltaje y frecuencia de la energía eléctrica domiciliar existente en el país o zona de instalación.

**Technical Support**

If you have any questions regarding the product installation, please contact our Technical Support.

Toll free US/Canada: **1-866-845-3673**

Regional phone numbers available

at [www.trendnet.com/support](http://www.trendnet.com/support)

**Product Warranty Registration**

Please take a moment to register your product online. Go to TRENDnet's website at:

**[www.trendnet.com/register](http://www.trendnet.com/register)**

**TRENDnet**

20675 Manhattan Place

Torrance, CA 90501

USA