



## Quick Installation Guide



**TV-IP501P**  
**TV-IP501W**

1.01

# Table of Contents

English .....	1
1. Before You Start .....	1
2. Hardware Installation and Configuration .....	3
3. Power over Ethernet (PoE) Installation (TV-IP501P only) .....	10
Troubleshooting .....	12

# 1. Before You Start



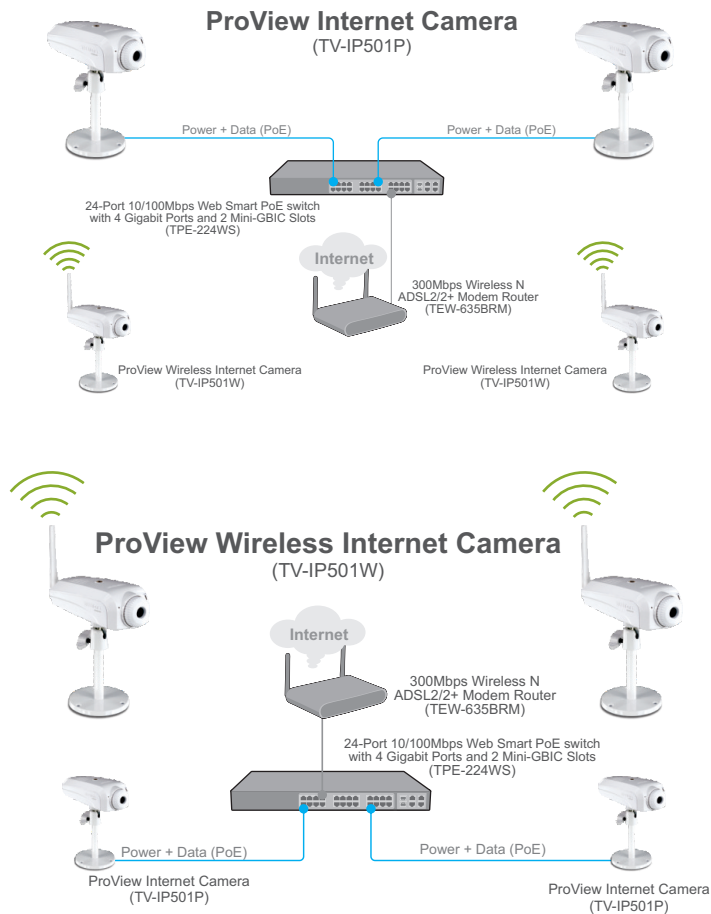
## Package Contents

- TV-IP501P/TV-IP501W
- CD-ROM (Utility & User's Guide)
- Multi-Language Quick Installation Guide
- Cat. 5 Ethernet cable (3m/ 9.8ft.)
- Power adapter (5V, 2.5A)
- Camera mounting Kit

## System Requirements

- 10/100Mbps Ethernet Adapter
- CD-ROM Drive
- CPU: 2GHz processor or above
- Memory: 256MB RAM or above / 512MB RAM or above (Windows Vista)
- Windows XP/Vista
- VGA Resolution: 800 x 600 or above
- Web Browser: Internet Explorer (6.0 or higher)
- Wireless router or access point (TV-IP501W)
- An available DHCP Server –routers usually have a built-in DHCP server.
- Power over Ethernet (PoE) Switch (e.g. TPE-S80WS) (TV-IP501P only) (Optional)
- Injector (e.g TPE-111GI) (TV-IP501P only) (Optional)

## Application



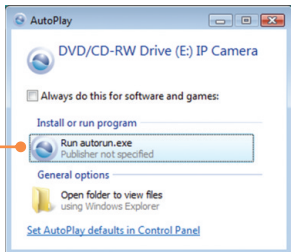
## 2. Hardware Installation and Configuration

### Note:

1. It is recommended that you configure the IP Camera from a wired computer.
2. If you would like to use IPViewPro 2.0 software, please install the software by clicking the Install IPView Pro 2.0 in the Autorun window and refer to the User's Guide on the CD for more information.

1. Insert the Utility CD-ROM into your CD-ROM drive.

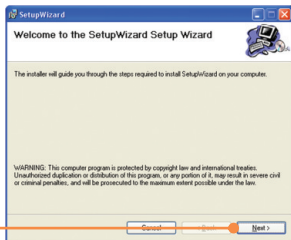
2. Click **Run autorun.exe**  
(Windows Vista only)



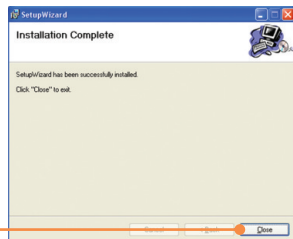
3. Click **Setup Wizard**.



4. Click **Next**. Then follow the **Setup Wizard** instructions.



5. Click **Close**.



6. Double click on the **SetupWizard** icon on your desktop.



7. Connect a RJ-45 network cable from a Switch/Router to the Ethernet port on the IP Camera.



8. Connect the AC Power Adapter to the IP Camera and then to a power outlet.

9. Click **Next**.

10. Select the IP camera and click **Next**.



11. Enter your ID and password.  
Then click **Next**. By default:  
**ID:** admin  
**Password:** admin

12. Configure the **Camera Name** and **Camera Time**. Then click **Next**.

13. If you would like to change the administrator password, click **Change Password**, enter a new password, retype the new password and then click **Next**.

14. Select **DHCP** and then click **Next**.

**Note:** If you have the TV-IP501P, please skip to step 17. If you have the TV-IP501W, continue on to step 15.

15. Click **I want to use wireless for the camera** and then click **Next**.



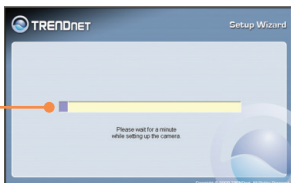
16. Select your wireless network from the dropdown list. The correct wireless settings will be automatically configured. If you have Encryption enabled, please enter your Encryption **Key**. Then click **Next**.



17. Click **Next**.



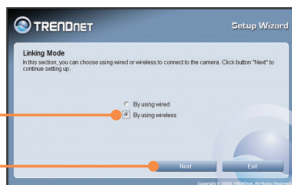
18. Please wait while the settings on your cameras are being saved.





**Note:** If you have the TV-IP501P, please skip to step 22. If you have the TV-IP501W, continue on to step 19.

19. Select **By Using Wireless** and then click **Next**.

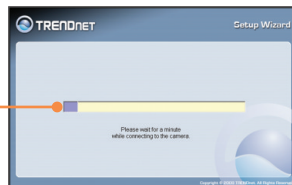


20. Disconnect the RJ-45 cable. Wait a minute and then click **Next**.

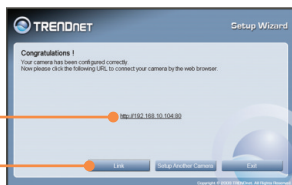


**Note:** The TV-IP501W will not work wirelessly until you disconnect the Ethernet cable from the back of the camera

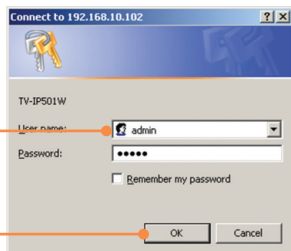
21. Please wait a minute while the TV-IP501W connects to your wireless router or access point.



22. Click on the following URL or click **Link** to open up the browser configuration.



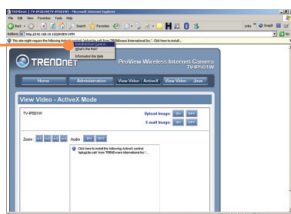
23. Enter the User name and Password, and then click **OK**.  
By default:  
User Name: **admin**  
Password: **admin**



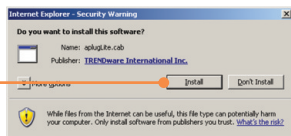
24. Click **View Video | Active X** or **View Video | Java**.



25. If you clicked on **View Video | Active X**, right click on the Internet Explorer Information Bar and select **Install ActiveX Control**.



26. Click **Install**.



27. Live video will now appear.



## Your installation is now complete.

**Note:** For detailed information regarding the **TV-IP501P/TV-IP501W** configuration and advanced settings, please refer to the Troubleshooting section, User's Guide on the Utility CD-ROM, or TRENDnet's website at <http://www.trendnet.com>.

### Register Your Product

To ensure the highest level of customer service and support, please take a moment to register your product Online at: [www.trendnet.com/register](http://www.trendnet.com/register)  
Thank you for choosing TRENDnet

#### Using the TV-IP501P with a PoE switch

1. Connect a RJ-45 cable from the Power Over Ethernet switch (e.g. TPE-80WS) to the **LAN** port on the Internet Camera Server.



2. Verify that the LEDs are on. Please refer to step 4 in the Hardware Installation section.

## Using the TV-IP501P with a Injector (TPE-111GI)

1. Connect the **Power Cord** to the **Injector**. Then connect the Power Cord to an outlet.



2. Connect a CAT-5e/6 cable from a switch to the TPE-111GI's **DATA IN** port.



3. Connect a CAT-5e/6 cable from the TV-IP501P to the TPE-111GI's **DATA OUT** port.



4. Verify that the LEDs are on.

## Q1: SetupWizard is unable to detect my camera. What should I do?

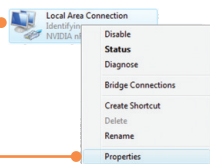
**A1:** First, verify that you have followed all the steps in the Section 2: Hardware Installation and Configuration. Second, disable any software firewall programs such as ZoneAlarm or Norton Internet Security. If you are using Windows XP or Windows Vista, disable the built in firewall. Third, click on Rescan in the SetupWizard.

## Q2: I do not have a DHCP server or DHCP is disabled on my network and I am unable to configure the TV-IP501P/TV-IP501W. What should I do?

**A2:** First, go to the TCP/IP settings on your computer and assign a static IP address on your computer's network adapter in the subnet of 192.168.10.x. Since the default IP address of the TV-IP501P/TV-IP501W is 192.168.10.30, do not assign a static IP address of 192.168.10.30 on your computer's network adapter. Second, open Internet Explorer and enter <http://192.168.10.30> into the address bar. See the instructions below:

## Windows Vista

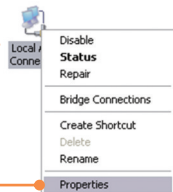
1. Go into the **Control Panel**, click **Network and Internet**, click **Network and Sharing Center**, click **Manage Network Connections** and then right-click the **Local Area Connection** icon and then click **Properties**.



2. Click **Internet Protocol Version 4(TCP/IPv4)** and then click **Properties**. Then click on **Use the following IP address**, and make sure you assign your network adapter an IP address in the subnet of 192.168.10.x.

## Windows XP/ 2000

1. Go into the **Control Panel**, double-click the **Network Connections** icon and then right-click the **Local Area Connection** icon and then click **Properties**.



Obtain an IP address automatically

Use the following IP address:

IP address: 192 . 168 . 10 . 5

Subnet mask: 255 . 255 . 255 . 0

Default gateway: . . . .

2. Click **Internet Protocol (TCP/IP)** and then click **Properties**. Then click on **Use the following IP address**, and make sure you assign your network adapter an IP address in the subnet of 192.168.10.x.

**Q3: The Image is blurry. How can I adjust the focus on the IP Camera?**

**A3:** You can adjust the IP Camera's focus by rotating the lens.

**Q4: When I click on View Image | ActiveX mode or View Image | Java Mode, the image does not load. What should I do?**

**A4:** First, make sure that you are using a browser that supports ActiveX or Java. Second, make sure that ActiveX or Java is installed and enabled.

**Q5: How do I connect the TV-IP501W to my wireless router or access point?**

**A5:** Make sure that you configure the camera to have the same SSID, encryption mode and key (if enabled). Follow the instructions in section 2: **Hardware Installation and Configuration** to configure the camera with the SSID and encryption key.

**Q6: After I successfully configured the TV-IP501W to match my wireless network settings, I can not connect to the camera.**

**A6:** First, verify that the wireless settings match your wireless network settings. Second, make sure to disconnect the Ethernet cable from the camera and verify that the **LNK** LED is blinking red.

**Q7: I forgot my password. What should I do?**

**A7:** Take a pin or paperclip and press the reset button on the back of the unit for 15 seconds. This will return settings back to factory defaults. Open up the SetupWizard program to find out the IP address of the camera (see step 11 in Section 2: **Configure the IP Camera**). If you do not have a DHCP server on your network, the default IP address is 192.168.10.30. The default administrator ID and password is admin.

If you still encounter problems or have any questions regarding the **TV-IP501P/TV-IP501W**, please contact TRENDnet's Technical Support Department.

# Declaration of Conformity



## Company Information:

Company Name:  
TRENDware International, Inc.

Company Address:  
20675 Manhattan Place  
Torrance, CA 90501  
USA

## Product Information:

Product Description:  
ProView Internet Camera

Model Number:  
TV-IP501P

Brand name:  
TRENDnet



## Technical Standards:

EN 301 489-1 V1.8.1: 2008

EN 301 489-17 V1.3.2: 2008

EN 60950-1 : 2006

EN 55022 : 2006

EN 55024 : 1998 + A1 : 2001 + A2 : 2003

EN 61000-3-2 : 2006

EN 61000-3-3 : 1995 + A1 : 2001 + A2 : 2005

## Declaration:

*The product is herewith confirmed to comply with the requirements of Directive 1999/5/EC of the Council (European Parliament) on the radio and telecommunications terminal equipment.*

*I hereby declare that the products and devices mentioned above are consistent with the standards and provisions of the guidelines.*

Sonny Su

Name (Full Name)

July 8, 2009

Date

Director of Technology

Position / Title

Legal Signature



# Declaration of Conformity



## Company Information:

Company Name:  
TRENDware International, Inc.

Company Address:  
20675 Manhattan Place  
Torrance, CA 90501  
USA

## Product Information:

Product Description:  
ProView Wireless Internet Camera

Model Number:  
TV-IP501W

Brand name:  
TRENDnet



## Technical Standards:

EN 301 328 V1.6.1 :2004  
EN 301 489-1 V1.8.1: 2008  
EN 301 489-17 V1.3.2: 2008  
EN 60950-1 : 2006

EN 55022 : 2006  
EN 55024 : 1998 + A1 : 2001 + A2 : 2003  
EN 61000-3-2 : 2006  
EN 61000-3-3 : 1995 + A1 : 2001 + A2 : 2005

## Declaration:

*The product is herewith confirmed to comply with the requirements of Directive 1999/5/EC of the Council (European Parliament) on the radio and telecommunications terminal equipment.*

*I hereby declare that the products and devices mentioned above are consistent with the standards and provisions of the guidelines.*

Sonny Su

\_\_\_\_\_  
Name (Full Name)

July 8, 2009

\_\_\_\_\_  
Date

Director of Technology

\_\_\_\_\_  
Position / Title

  
\_\_\_\_\_  
Legal Signature

## Certifications

This equipment has been tested and found to comply with FCC and CE Rules.

Operation is subject to the following two conditions:

- (1) This device may not cause harmful interference.
- (2) This device must accept any interference received. Including interference that may cause undesired operation.



Waste electrical and electronic products must not be disposed of with household waste. Please recycle where facilities exist. Check with you Local Authority or Retailer for recycling advice.



**NOTE:** THE MANUFACTURER IS NOT RESPONSIBLE FOR ANY RADIO OR TV INTERFERENCE CAUSED BY UNAUTHORIZED MODIFICATIONS TO THIS EQUIPMENT. SUCH MODIFICATIONS COULD VOID THE USER'S AUTHORITY TO OPERATE THE EQUIPMENT.

### ADVERTENCIA

En todos nuestros equipos se mencionan claramente las características del adaptador de alimentación necesario para su funcionamiento. El uso de un adaptador distinto al mencionado puede producir daños físicos y/o daños al equipo conectado. El adaptador de alimentación debe operar con voltaje y frecuencia de la energía eléctrica domiciliar existente en el país o zona de instalación.



**TRENDnet**®

## Product Warranty Registration

Please take a moment to register your product online.  
Go to TRENDnet's website at <http://www.trendnet.com/register>

**TRENDnet**®

20675 Manhattan Place  
Torrance, CA 90501  
USA