



## Quick Installation Guide



**TV-IP410**  
**TV-IP410W**  
H/W: A1.0R

# Table of Contents

English .....	1
1. Before You Start .....	1
2. Hardware Installation .....	3
3. Configure the Internet Camera .....	4
Troubleshooting .....	9

# 1. Before You Start



## Package Contents

- TV-IP410 / TV-IP410W
- Utility CD-ROM
- Multi-Language Quick Installation Guide
- 1 x 2dBi Detachable Antenna (TV-IP410W)
- GPIO Adapter
- RJ-45 Cable
- Mounting Kit
- Power Adapter (12VDC, 1.5A)

## System Requirements

- 10/100Mbps Ethernet
- Wireless router or access point (TV-IP410W)
- CPU: 1GHz processor or above
- Memory: 256MB RAM or above / 512MB RAM or above (Windows Vista)
- Windows 2000/XP/Vista
- VGA Resolution: 800 x 600 or above
- Web Browser: Internet Explorer (6.0 or higher)

# Application

## Home Monitoring (TV-IP410)



## Family Monitoring (TV-IP410)



Property Monitoring  
(TV-IP410W)



Wireless N Gigabit Router  
(TEW-633GR)



Internet

Cable/DSL  
Modem



Business Monitoring  
(TV-IP410W)

— Wireless 54Mbps — 100Mbps

## Home Monitoring (TV-IP410W)



## Family Monitoring (TV-IP410W)



Property Monitoring  
(TV-IP410)

Wireless N Gigabit Router  
(TEW-633GR)



Internet

Cable/DSL  
Modem



Business Monitoring  
(TV-IP410)

— Wireless 54Mbps — 100Mbps

## 2. Hardware Installation

1. Attach the **Antenna**. (TV-IP410W)

2. Connect a RJ-45 network cable from a Switch/Router to the **Ethernet** port of the Internet Camera Server.

3. Connect the AC Power Adapter to the **Internet Camera Server** and then to a power outlet.

4. Verify the Power and Link LEDs are on.



# 3. Configure the Internet Camera

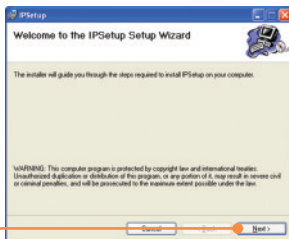
## Note:

1. It is recommended that you configure the Internet Camera from a wired computer.
2. If you would like to use SecurView software, please refer to the User's Guide on the CD for more information.

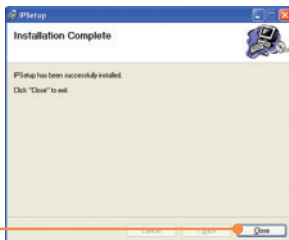
1. Insert the Utility CD-ROM into your CD-ROM drive and then click **IP Setup**.



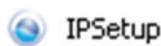
2. Follow the **IPSetup Setup Wizard** instructions and then click **Next**.



3. Click **Close**.

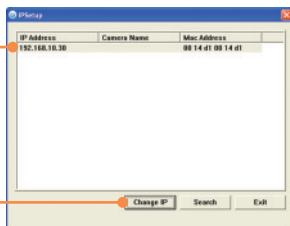


4. Go to **Start -> Programs -> TRENDnet -> IPSetup** and click **IPSetup**.



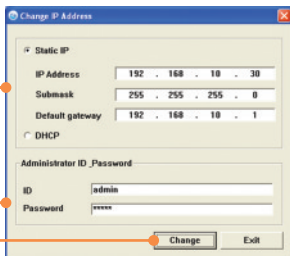
**Note:** By default, the IP setting on the TV-IP410/TV-IP410W is set to DHCP. Please skip to step 9. If you want to give the TV-IP410/TV-IP410W static IP address, continue on to step 5.

5. Select the camera server and click **Change IP**.

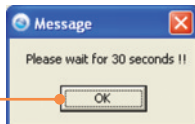


6. Configure the IP address to be in the same subnet as your network, type in the **Administrator ID** and **Password** and click **Change**.

By default:  
ID: **admin**  
Password: **admin**



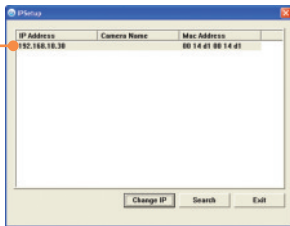
7. Click **OK** and wait 30 seconds.



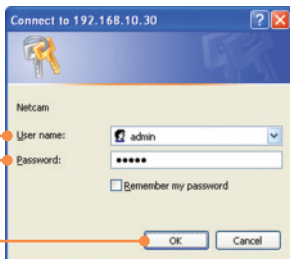
8. Click **OK**.



9. Double click the camera server to access the browser configuration.



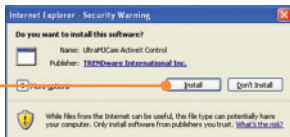
10. Enter the User name and Password, and then click **OK**.  
By default:  
User Name: **admin**  
Password: **admin**



11. Right click and select **Install ActiveX Control**.



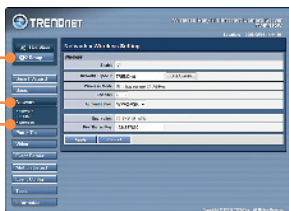
12. Click **Install**.



**Note:** If you have the TV-IP410W, continue on to step 13. If you have the TV-IP410, skip to step 16.



13. Click **Setup, Network** and then click **Wireless**. (TV-IP410W only).



14. Click **Site Survey**. Select your wireless network. If encryption is enabled, select the proper **Authentication** type, enter the Pre-Shared Key and then click apply. (Example shows WPA2-PSK. If your wireless network does not support WPA, select open or shared instead. Contact your network administrator for more information) (TV-IP410W only).



15. Disconnect the RJ-45 cable and unplug the power. Then plug the power back in (TV-IP410W).

**Note:** The TV-IP410W will not work wirelessly until you disconnect the Ethernet cable from the back of the camera.

16. Verify the Power and Link LEDs are on.

17. Click **Live View**.



**Your installation is now complete.**

**Note:** For detailed information regarding the TV-IP410/TV-IP410W configuration and advanced settings, please refer to the Troubleshooting section, User's Guide on the Utility CD-ROM, or TRENDnet's website at <http://www.trendnet.com>.

### Register Your Product

To ensure the highest level of customer service and support, please take a moment to register your product Online at: [www.trendnet.com/register](http://www.trendnet.com/register)  
Thank you for choosing TRENDnet

**Q1: IP Setup is unable to detect my camera. What should I do?**

**A1:** First, verify that you have followed all the steps in the Section 2: Hardware Installation. Second, disable any software firewall programs such as ZoneAlarm or Norton Internet Security. If you are using Windows XP or Windows Vista, disable the built in firewall. Third, click on **Search** in the IPSetup setup wizard.

**Q2: I do not have a DHCP server or DHCP is disabled on my network and I am unable to configure the TV-IP410/W. What should I do?**

**A2:** First, go to the TCP/IP settings on your computer and assign a static IP address on your computer's network adapter in the subnet of 192.168.10.x. Since default IP address of the TV-IP410/TV-IP410W is 192.168.10.30, do not assign a static IP address of 192.168.10.30 on your computer's network adapter. Second, run the IPSetup program and double click on the TV-IP410/TV-IP410W to access the browser configuration.

**Q3: The Image is blurry. How can I adjust the focus on the Internet camera?**

**A3:** You can adjust the Internet Camera's focus by rotating the lens.

**Q4: When I click on Live View the image does not load?**

**A4:** First, make sure that you are using a browser that supports ActiveX. Second, make sure that you added ActiveX. See step 10 and 11 in Section 2: **Configure the Internet Camera**.

**Q5: How do I connect the TV-IP410W to my wireless router or access point?**

**A5:** Make sure that you configure the camera to have the same SSID, encryption mode and key (if enabled). Follow the instructions in section 2 to configure the camera with the SSID and encryption key.

**Q6: After I successfully configured the TV-IP410W to match my wireless network settings, I can not connect to the camera.**

**A6:** First, verify that the wireless settings match your wireless network settings. Second, verify in the wireless section of the browser configuration that the **Enable** option is checked. Third, make sure to disconnect the Ethernet cable from the camera and verify that the **LINK** LED is blinking green.

**Q7: I forgot my password. What should I do?**

**A7:** Take a pin or paperclip and press the reset button on the back of the unit for 15 seconds. This will return settings back to factory defaults. Open up the IPSetup program to find out the IP address of the camera (see step 5 in Section 3: **Configure the Internet camera**). The default administrator ID and password is admin.

If you still encounter problems or have any questions regarding the **TV-IP410/TV-IP410W**, please contact TRENDnet's Technical Support Department.

## Certifications

This equipment has been tested and found to comply with FCC and CE Rules.

Operation is subject to the following two conditions:

- (1) This device may not cause harmful interference.
- (2) This device must accept any interference received. Including interference that may cause undesired operation.



Waste electrical and electronic products must not be disposed of with household waste. Please recycle where facilities exist. Check with you Local Authority or Retailer for recycling advice.



**NOTE:** THE MANUFACTURER IS NOT RESPONSIBLE FOR ANY RADIO OR TV INTERFERENCE CAUSED BY UNAUTHORIZED MODIFICATIONS TO THIS EQUIPMENT. SUCH MODIFICATIONS COULD VOID THE USER'S AUTHORITY TO OPERATE THE EQUIPMENT.

### ADVERTENCIA

En todos nuestros equipos se mencionan claramente las características del adaptador de alimentación necesario para su funcionamiento. El uso de un adaptador distinto al mencionado puede producir daños físicos y/o daños al equipo conectado. El adaptador de alimentación debe operar con voltaje y frecuencia de la energía eléctrica domiciliar existente en el país o zona de instalación.



**TRENDnet**<sup>®</sup>

## Product Warranty Registration

Please take a moment to register your product online.  
Go to TRENDnet's website at <http://www.trendnet.com/register>

**TRENDnet**<sup>®</sup>

20675 Manhattan Place  
Torrance, CA 90501  
USA