

Installation

1



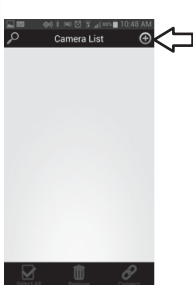
Tap on the **Play Store** icon to download and install TRENDnetVIEW app. Once installed tap the TRENDnetVIEW icon to open up the app.

Note: Android OS must be version 2.3.3 or higher.

Remote Camera Setup

Note: It is recommended that you setup a dynamic DNS service in order to view your cameras remotely. See your router and IP camera's user's guide for instructions.

1



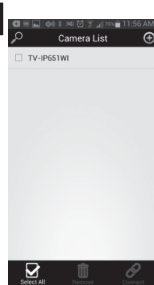
- Tap the **Manually Add Camera** icon at the upper right corner of the screen.

2



- Enter the camera's Name, Host Name, remote IP address (e.g. 65.65.65.65) or Dynamic DNS address, Port number, and Username and Password. Tap the **Save** icon to finish.

3



- After the selected camera has been added, TRENDnetVIEW will return to the Camera List screen. Repeat steps 2-3 to add more cameras.

View Video

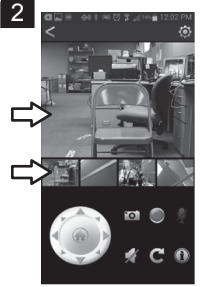
Note: It is recommended that you setup a dynamic DNS service in order to view your cameras remotely. See your router and IP camera's user's guide for instructions.

1




- Check the desired cameras. Tap the **Select All** icon at the bottom left corner to select all cameras. Tap the **Connect** icon at the bottom right corner to view video.

2




- Swipe the video pane to view other cameras. Swipe the thumbnail pane to see thumbnail view of all cameras.

3




- Rotate the Android phone horizontally to view the video in landscape mode.

4



- Pinch the screen to zoom in and zoom out.

5



- In landscape mode, tap the screen to bring up the function toolbar.

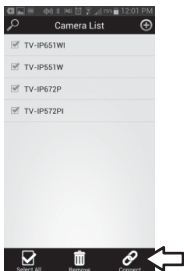
6



- Above is the function toolbar. Buttons include: pan and tilt, snapshot, enable/disable microphone, enable/disable speaker, refresh and information. If the button is greyed out, the IP camera does not support that function.

Change Video Aspect Ratio

1



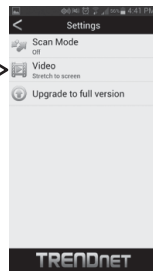
- Tap the **Connect** icon at the bottom right corner to view video.

2



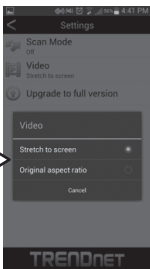
- Tap the **Settings** icon at the upper right corner of the screen. Then tap **Settings**.

3



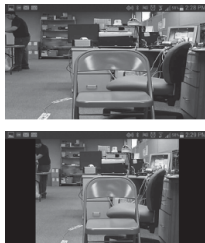
- Tap **Video** to change the aspect ratio.

4



- Select **Stretch to screen** or **Original aspect ratio**.

5




- The top image illustrates the stretch to screen option. The bottom image illustrates original aspect ratio option.

In-app Upgrade

Note: The In-app Upgrade unlocks the following features:

- Recording to mobile device
- Split Screen
- Quad View
- Auto Scan

1



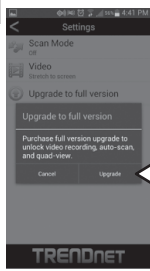
• Tap the **Settings** icon at the upper right corner of the screen. Then tap **Settings**.

2



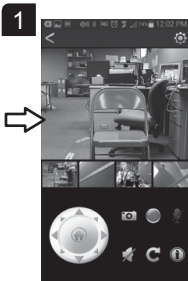
• Tap **Upgrade to full version**.

3



• Tap **Upgrade**.

Split Screen and Quad View (In-app Upgrade Required)



- Double tap the video.



- In portrait mode, you can view up to 2 cameras at a time. Swipe to the left to view more cameras.

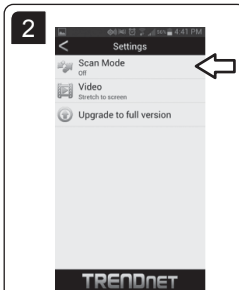


- Rotate the camera horizontally to view video in landscape mode. In landscape mode, up to 4 cameras can be viewed at once. Swipe to the left to view more cameras.

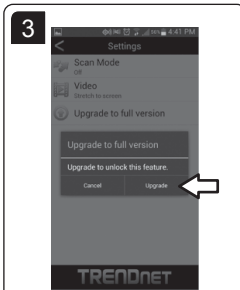
Scan Mode (In-app Upgrade Required)



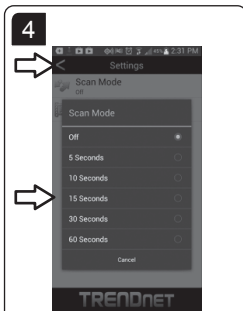
- Tap the **Settings** icon at the upper right corner of the screen. Then tap **Settings**.



- Tap **Scan Mode**.



- If you have not yet purchased the full version, please tap **Upgrade**.



- Select the desired option and then tap the **Back** button.


Recording (In-app Upgrade Required)

1




• Tap the **Connect** icon at the bottom right hand corner to view video.

2




• Swipe the video pane to select the desired camera and then click the **Record** button.

3



• If you have not yet purchased the full version, please tap **Upgrade**.

4




• **REC** (blinking red) indicates that video is being recorded. Tap the **Record** button to stop the recording.

5

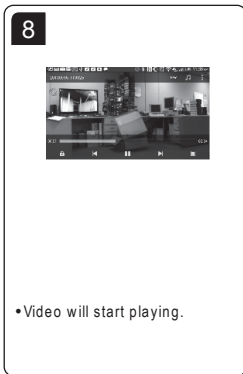
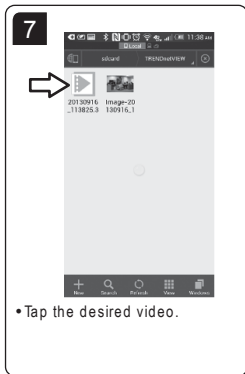


• Tap your file manager application.

6

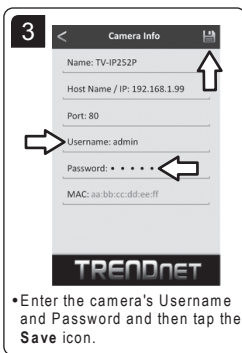
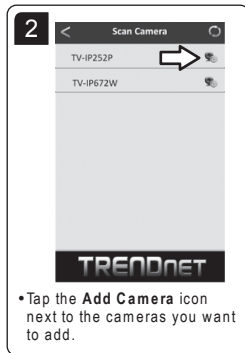
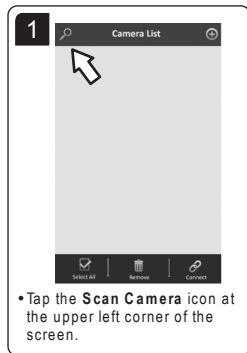


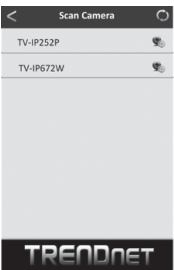
• Tap the **TRENDnetVIEW** folder.



Local Camera Setup**Note:**

- Before proceeding, you must establish a wireless connection to the network where your IP cameras are installed.
- This method will not allow you to see video while away from your local network. Remote camera setup is recommended.



Local Camera Setup

4

Scan Camera

TV-IP252P

TV-IP672W

TRENDnet

- After the selected camera has been added, TRENDnetVIEW will return to the Scan Camera screen. Repeat steps 2-3 to add more cameras.

Technical Support

If you have any questions regarding the product installation, please contact our Technical Support.

Toll free US/Canada: 1-866-845-3673

Regional phone numbers available
at www.trendnet.com/support

Product Warranty Registration

Please take a moment to register your product online. Go to TRENDnet's website at:

<http://www.trendnet.com/register>

TRENDnet

20675 Manhattan Place, Torrance, CA 90501. USA

Copyright © 2014. All Rights Reserved. TRENDnet.