

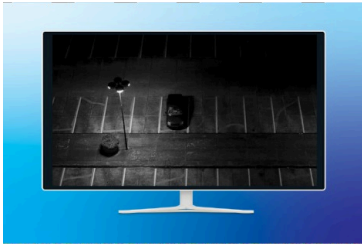


Indoor/Outdoor 5MP H.265 WDR PoE IR Fixed Turret Network Camera

TV-IP1515PI (v1.0R)

- Easy Cloud P2P QR code installation
- 5MP HD video (2592 x 1920) at 20 fps
- Night vision IR LEDs for night vision up to 30m (98 ft.)
- Built-in microphone for one-way audio
- Outdoor IP66 weather rating
- Wide Dynamic Range image balancing
- Save installation costs with Power over Ethernet (PoE)
- Programmable motion detection recording and email alerts
- Micro SD card slot (up to 256GB)
- Free Sentinel iOS® and Android™ mobile apps
- Complimentary View Manager PC software
- NDAA / TAA compliant (U.S. and Canada only)

TRENDnet's Indoor/Outdoor 5MP H.265 PoE IR Fixed Turret Network Camera, model TV-IP1515PI, provides day and night surveillance with a night vision range of up to 30 meters (98 ft.). This fixed turret network camera delivers year-round surveillance with an IP66 weather rated housing to withstand outdoor environments. Record up to 5MP HD video at 20fps in a space saving H.265 compression format. Easily view live video from the 5MP turret camera on your mobile device using our free Sentinel mobile app, or on your PC with our free View Manager desktop camera video management software.



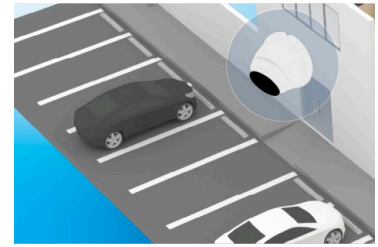
Night Vision HD Surveillance

Night-time viewing up to 30 meters (98 ft.) away, with night vision infrared (IR) LEDs that dynamically adjusts as needed.



Power over Ethernet (PoE)

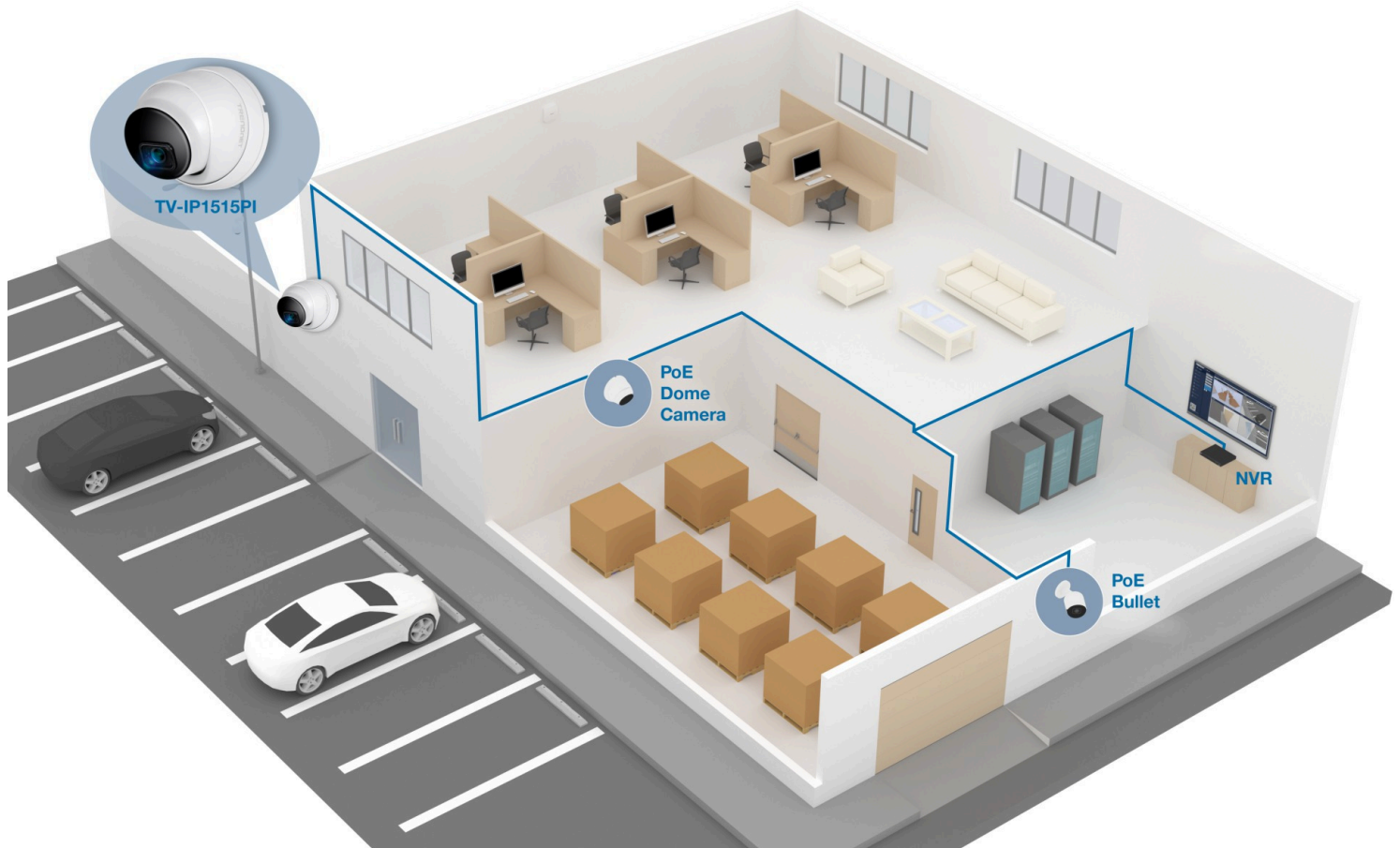
PoE offers cost savings and the flexibility to install this 5MP turret camera up to 100m (328 ft.) from the PoE source equipment.



Outdoor Ready

Built for outdoor environments with an IP66 weather rating and an operating temperature range of -30° – 50° C (-22° – 122° F).

NETWORKING SOLUTION



FEATURES



5 Megapixel

Record up to 5MP HD video (2592 x 1920) at 20 fps in the space saving H.265 compression format



Outdoor Ready

Outdoor IP66 weather rated housing



Advanced Playback

Advanced in-camera archived video playback functionality



Recording Flexibility

Define custom schedules using continuous (24/7) and event-based recording modes



Complimentary Apps

View live video from the 5MP turret camera to a mobile device with free Sentinel iOS® and Android™ apps



Night Vision HD Surveillance

Night vision infrared LEDs dynamically adjusts the infrared (IR) LEDs by lowering the IR intensity when objects are near, and increasing IR intensity when objects are farther away. Night-time viewing up to 30 meters (98 ft.) away



3-Axis Adjustment

Manually adjust the pan and tilt angles on this 5MP turret camera to find the optimal camera lens position



Motion Detection

Create custom motion detection zones with this 5MP outdoor PoE camera to record video and send email notifications when a zone is triggered



PoE

Save installation costs with Power over Ethernet (PoE)



Storage

Record video from this 5MP turret camera to a network storage device or to a Micro SD card (up to 256GB, not included)



Wide Dynamic Range (WDR)

WDR setting improves image quality and focus when a camera is exposed to high contrast lighting environments by enhancing the dark areas of the image to make them more visible



Complimentary Software

Complimentary View Manager software to manage TRENDnet cameras



ONVIF

ONVIF Profile S



SPECIFICATIONS

Lens

- Focal length: 3.6mm @ F1.6
- Sensor: 1/ 2.7" CMOS sensor
- DWDR
- 3D NDR

Viewing

- Horizontal angle: 79°
- Vertical angle : 56°
- Diagonal angle : 106°
- Manual pan: 0° to 360°
- Manual tilt: 0° to 80°
- Lens rotation: 0° to 360°

Minimum Illumination

- IR off: 0.02 lux
- IR on: 0 lux
- IR distance: 30m (98 ft.)
- IR LED wavelength: 850nm

Compression

- H.265
- H.264
- MJPEG

Resolution

- Main stream: H.265/H.264: 2592 x 1920 up to 20fps
- Sub stream: H.265/H.264/MJPEG: 1280 x 720 up to 10fps
- Third stream: H.265/H.264/MJPEG: 720 x 480 up to 10fps

Hardware Standards

- IEEE 802.1x
- IEEE 802.3
- IEEE 802.3u
- IEEE 802.3x
- IEEE 802.3af

Device Interface

- 10/100Mbps PoE port
- Micro SD card slot
- Power jack
- Built-in microphone
- Reset button

Management Interface

- Multi-language support
- Image settings: 3D Noise Reduction, Brightness, Hue Contrast, Saturation, Sharpness, Exposure Value, image Auto Gain, Day/Night switch, WDR, white balance, Mirror, Flip, Color Mode
- WDR enhances video quality in high contrast daytime lighting
- 3D Noise Reduction removes digital noise from the video signal
- Audio: built-in microphone can be enabled and disabled
- Time and date overlay
- Video Recording: scheduled, motion detection, and tamper detection
- Motion detection: define motion detection areas and motion sensitivity
- Privacy masks: define custom privacy masks
- Tamper detection function: email notification
- Snapshot: real time snapshot and motion triggered
- Supports remote management

Micro SD slot

- Supports Micro SD/SDHC/SDXC (not included)
- Up to 256GB

Housing

- IP66 weather rated

Network Protocol

- IPv4, IPv6, UDP, TCP/IP
- DHCP, NTP, DDNS, SMTP, FTP, LLTD
- SMB
- HTTP, HTTPS
- RTSP, RTP

Compliant Standard

- ONVIF (Profile S)

Dimension

- 100 x 100 x 90mm (3.9 x 3.9x 3.54 in.)

Weight

- 438g (0.96 lb.)

Operating Temperature

- -30° – 50° C (-22° – 122° F)

Humidity

- Max. 95% non-condensing

Power

- Input: PoE
- Max. consumption: 6W

Power Adapter (optional model: 12VDC1A)

- Input: 100 – 240V AC , 50/60Hz
- Output: 12V DC, 1A external power adapter

View Manager

- Supports TRENDnet cameras
- Recording playback
- Custom viewing modes and options
- Compatibility: Windows®

Sentinel App

- Free iOS® and Android™ apps
- View live camera video
- Push notifications
- Take snapshots and videos
- Playback

Certifications

- CE
- FCC
- UL

Warranty

- 3 year

Package Contents

- TV-IP1515PI
- Weather seal
- Quick installation guide
- Camera mounting hardware

All references to speed are for comparison purposes only. Product specifications, size, and shape are subject to change without notice, and actual product appearance may differ from that depicted herein.