



## USB-C (Type-C) to Gigabit Ethernet Adapter

TUC-ETG (v1.0R)

- Connect your USB Type-C device at fast Gigabit speeds
- Share data, music, movies, and more
- Compact design is ideal for on the go professionals
- Supports Wake on LAN (Suspend Mode)

The TUC-ETG is a high-speed USB network adapter that allows you to easily connect to a gigabit network from a USB Type-C enabled desktop, MacBook<sup>®</sup>, or notebook PC. Compliant with a USB Type-C port and backwards compatible with USB 3.0, 2.0 and 1.1 speeds, you can share files and printers and gain access to broadband Internet.



### Easy Setup

Simple installation in minutes



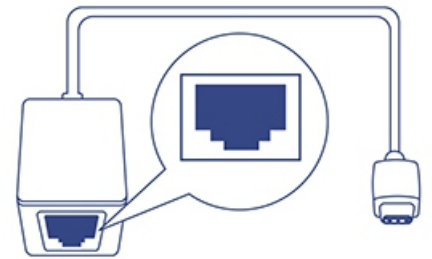
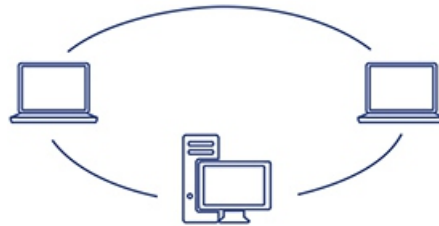
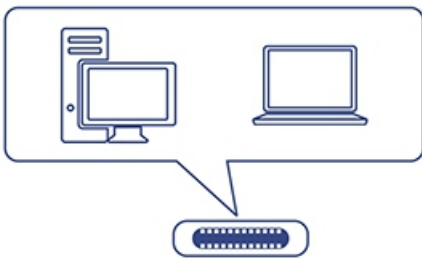
### USB Powered

No bulky power brick—compact adapter powered by USB port



### Flexible Connector

Attached flexible 12.7 cm (5 in.) USB cable accommodates most installation scenarios



### USB Type-C

Easily connect to a gigabit network from a USB Type-C enabled desktop, MacBook®, or notebook PC.

### Compatibility

Compatible with Windows® and Mac® operating systems.

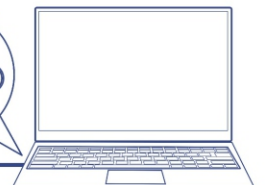
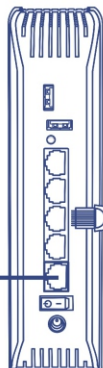
### Gigabit Speeds

Experience Full Duplex 2 Gbps Ethernet speeds with this compact USB Type-C to Gigabit adapter.

## Networking Solution



Internet



Laptop

## Specifications

### Standards

- IEEE 802.3
- IEEE 802.3u
- IEEE 802.3x
- IEEE 802.3ab
- IEEE 802.3az
- USB Type-C

### Interface

- 1 x Gigabit Ethernet port
- 1 x USB Type-C port (Male)

### Maximum Data Rate

- Up to 2 Gbps (Gigabit port)

### Special Features

- Energy saving technology
- Wake on LAN (suspend mode)

### Supported OS

- Windows® 10
- Mac OS® 10.6 - 10.13

### Operating Temperature

- 0 – 40 °C (32 – 104 °F)

### Operating Humidity

- Max. 90% non-condensing

### Power

- USB powered

### Dimensions

- 73 x 24 x 14 mm (2.8 x 1 x 0.55 in.)
- 130mm (5 in) cable length

### Weight

- 20 g (0.8 oz.)

### Warranty

- 2 year limited

### Certifications

- CE
- FCC

### Package Contents

- TUC-ETG
- Quick Installation Guide
- CD-ROM (Drivers)

