
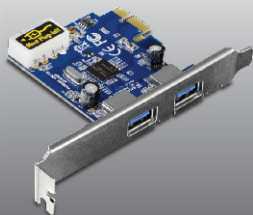


Guía de instalación rápida 

TU3-H2PIE
1.02

Table of Contents

Español	1
1. Antes de iniciar	1
2. Cómo se instala	2
Technical Specifications	6
Troubleshooting	7



Contenidos del paquete

- TU3-H2PIE
- CD-ROM del controlador
- Guía de instalación rápida multilingüe

Requisitos del sistema

- Ranura PCI Express 1.0a/2.0
- Cable USB 3.0
- Unidad de CD-ROM

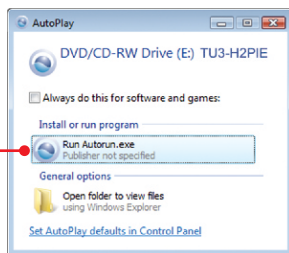
Compatible con sistemas operativos	CPU	Memoria
Windows 7 (32/64-bit)	1GHz o superior	1GB RAM o superior
Windows Vista (32/64-bit)	800MHz o superior	512MB RAM o superior
Windows XP (32/64-bit)	300MHz o superior	256MB RAM o superior

2. Cómo se instala

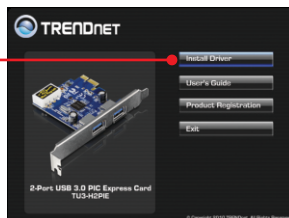
¡Importante! NO instale el TU3-H2PIE hasta que no se le indique.

1. Introduzca el **CD-ROM del controlador** y de la herramienta en la unidad de CD-ROM de su PC.

2. Haga clic en **Run Autorun.exe** (sólo para Windows 7/Vista).



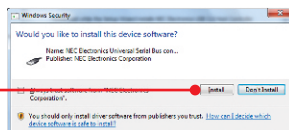
3. Haga clic en **Install Driver** (Instalar controlador).



4. Haga clic en **Next**. Después siga las instrucciones del asistente de configuración.



5. Haga clic en **instalar**



ENGLISH

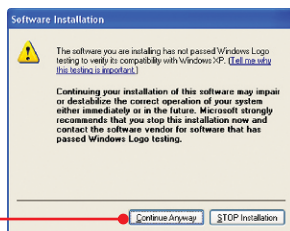
FRANÇAIS

DEUTSCH

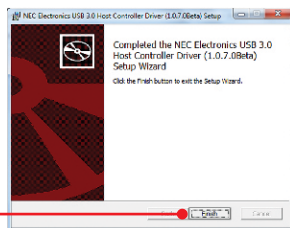
ESPAÑOL

РУССКИЙ

6. Haga clic en **Continue Anyway**
(Continuar de todas formas). (Windows XP)



7. Haga clic en **Finish** (Finalizar).



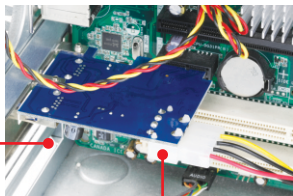
Nota: Consulte, por favor, el manual de usuario de su ordenador con respecto a la instalación del hardware.

8. Apague su PC.

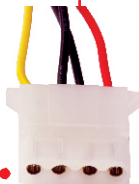
9. Abra la caja de su PC.



10. Inserte la tarjeta de TU3-H2PIE firmemente en una ranura PCIe disponible.



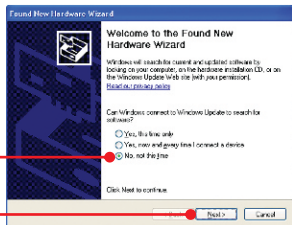
11. Conectar un cable de alimentación de Molex de 4 pines disponible de fuente de alimentación del ordenador a la tarjeta TU3-H2PIE.



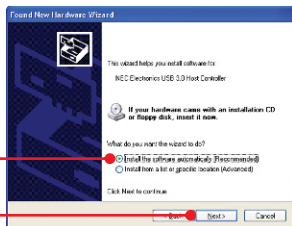
12. ENCIENDA el PC y espere hasta que aparezca el escritorio de Windows.

Nota: Para Windows 7/Vista, los conductores se instalarán automáticamente. Por favor salte al paso 18. Para Windows XP, continúe con el paso 13

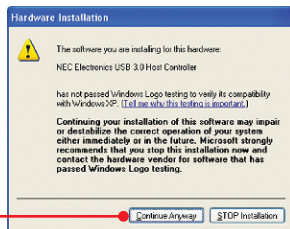
13. Le aparecerá la ventana **Found New Hardware** (Nuevo hardware encontrado). Seleccione **No** y haga clic en **Next** (Siguiendo).



14. Seleccione **Install the software automatically** (Instalar el software automáticamente) (Recommended) y luego pulse **Next** (Siguiendo).



15. Haga clic en **Continue Anyway**
(Continuar de todas formas). (Windows XP)

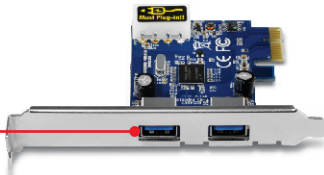


16. Haga clic en **Finish** (Finalizar).



17. Repita los pasos 13-16.

18. Conecte su dispositivo USB a uno de los
puertos USB de la TU3-H2PIE.



Su configuración inalámbrica ha finalizado.

Hardware	
Interface	<ul style="list-style-type: none">• USB 3.0• PCI Express Interface Revision 2.0 backwards• Electromechanical Specification Revision 2.0• Bus Power Management Interface Specification Revision 1.2
Port	<ul style="list-style-type: none">• 2 x USB 3.0 Port• 1 x 4-pin internal power port (cable not included)
Supported OS	Windows 7 (32/64-bit), Vista (32/64-bit), XP (32/64-bit)
Data Rates	<ul style="list-style-type: none">• Super speed: 5Gbps (USB 3.0)• High speed: 480Mbps (USB 2.0)• Full speed: 12Mbps (USB 1.1)• Low speed: 1.5Mbps (USB 1.0)
Power Consumption	900mA (max) per port
Dimensions (L x W x D)	120 x 82 x 18.5 mm (4.7 x 3.2 x 0.8 in.)
Weight	45g. (1.6oz.)
Temperature	5°C ~ 40°C (41°F ~ 104°F)
Humidity	90% (non-condensing)
Certification	CE, FCC

1. I inserted the Driver CD-ROM into my computer's CD-ROM Drive but the installation menu does not appear automatically. What should I do?

1. For Windows 7, if the installation menu does not appear automatically, click on the Windows Icon on the bottom left hand corner of the screen, click the "Search programs and files" box, and type D:\Autorun.exe, where "D" in "D:\Autorun.exe" is the letter assigned to your CD-ROM Drive, and then press the ENTER key on your keyboard
2. For Windows Vista, if the installation menu does not appear automatically, click Start, click the Start Search box, and type D:\Autorun.exe where "D" in "D:\Autorun.exe" is the letter assigned to your CD-ROM Drive, and then press the ENTER key on your keyboard.
3. For Windows XP, if the window does not appear automatically, click Start, click Run and type D:\Autorun.exe where "D" in "D:\Autorun.exe" is the letter assigned to your CD-ROM Drive, and then press the ENTER key on your keyboard.

2. Can I connect or disconnect the USB cable while the computer is on?

Yes, you can connect or disconnect the USB cable, or any external USB device while the computer is on because the USB interface is Plug-and-Play and hot-pluggable.

3. I have a USB 1.1/2.0 cable. Can it work with USB 3.0 devices?

Yes, it works but it may cause problems for connecting super-speed USB 3.0 external peripherals. Therefore it is recommended that you use certified USB 3.0 cable.

4. After successful installation of the TU3-H2PIE, I connected my external USB device to the USB port, but it doesn't seem to work. What should I do?

1. Verify that your external USB device works when you connect it directly to a USB port on your computer.
2. Verify that you connect an available 4-pin Molex power cable from your power supply to the TU3-H2PIE.
3. If you have an external AC power adapter that came with the external USB device, connect the AC power adapter to the device. Then power on the device.
4. Try connecting the external USB device to the other USB port on the TU3-H2PIE.
5. Try using a different USB cable.

If you still encounter problems or have any questions regarding the **TU3-H2PIE**, please contact TRENDnet's Technical Support Department.

TRENDnet warrants its products against defects in material and workmanship, under normal use and service, for the following lengths of time from the date of purchase.

TU3-H2PIE – 2 Years Limited Warranty

AC/DC Power Adapter, Cooling Fan, and Power Supply carry a 1 year warranty.

If a product does not operate as warranted during the applicable warranty period, TRENDnet shall reserve the right, at its expense, to repair or replace the defective product or part and deliver an equivalent product or part to the customer. The repair/replacement unit's warranty continues from the original date of purchase. All products that are replaced become the property of TRENDnet. Replacement products may be new or reconditioned. TRENDnet does not issue refunds or credit. Please contact the point-of-purchase for their return policies.

TRENDnet shall not be responsible for any software, firmware, information, or memory data of customer contained in, stored on, or integrated with any products returned to TRENDnet pursuant to any warranty.

There are no user serviceable parts inside the product. Do not remove or attempt to service the product by any unauthorized service center. This warranty is voided if (i) the product has been modified or repaired by any unauthorized service center, (ii) the product was subject to accident, abuse, or improper use (iii) the product was subject to conditions more severe than those specified in the manual.

Warranty service may be obtained by contacting TRENDnet within the applicable warranty period and providing a copy of the dated proof of the purchase. Upon proper submission of required documentation a Return Material Authorization (RMA) number will be issued. An RMA number is required in order to initiate warranty service support for all TRENDnet products. Products that are sent to TRENDnet for RMA service must have the RMA number marked on the outside of return packages and sent to TRENDnet prepaid, insured and packaged appropriately for safe shipment. Customers shipping from outside of the USA and Canada are responsible for return shipping fees. Customers shipping from outside of the USA are responsible for custom charges, including but not limited to, duty, tax, and other fees.

WARRANTIES EXCLUSIVE: IF THE TRENDNET PRODUCT DOES NOT OPERATE AS WARRANTED ABOVE, THE CUSTOMER'S SOLE REMEDY SHALL BE, AT TRENDNET'S OPTION, REPAIR OR REPLACE. THE FOREGOING WARRANTIES AND REMEDIES ARE EXCLUSIVE AND ARE IN LIEU OF ALL OTHER WARRANTIES, EXPRESSED OR IMPLIED, EITHER IN FACT OR BY OPERATION OF LAW, STATUTORY OR OTHERWISE, INCLUDING WARRANTIES OF MERCHANTABILITY AND FITNESS FOR A PARTICULAR PURPOSE. TRENDNET NEITHER ASSUMES NOR AUTHORIZES ANY OTHER PERSON TO ASSUME FOR IT ANY OTHER LIABILITY IN CONNECTION WITH THE SALE, INSTALLATION MAINTENANCE OR USE OF TRENDNET'S PRODUCTS.

TRENDNET SHALL NOT BE LIABLE UNDER THIS WARRANTY IF ITS TESTING AND EXAMINATION DISCLOSE THAT THE ALLEGED DEFECT IN THE PRODUCT DOES NOT EXIST OR WAS CAUSED BY CUSTOMER'S OR ANY THIRD PERSON'S MISUSE, NEGLIGENCE, IMPROPER INSTALLATION OR TESTING, UNAUTHORIZED ATTEMPTS TO REPAIR OR MODIFY, OR ANY OTHER CAUSE BEYOND THE RANGE OF THE INTENDED USE, OR BY ACCIDENT, FIRE, LIGHTNING, OR OTHER HAZARD.

LIMITATION OF LIABILITY: TO THE FULL EXTENT ALLOWED BY LAW TRENDNET ALSO EXCLUDES FOR ITSELF AND ITS SUPPLIERS ANY LIABILITY, WHETHER BASED IN CONTRACT OR TORT (INCLUDING NEGLIGENCE), FOR INCIDENTAL, CONSEQUENTIAL, INDIRECT, SPECIAL, OR PUNITIVE DAMAGES OF ANY KIND, OR FOR LOSS OF REVENUE OR PROFITS, LOSS OF BUSINESS, LOSS OF INFORMATION OR DATA, OR OTHER FINANCIAL LOSS ARISING OUT OF OR IN CONNECTION WITH THE SALE, INSTALLATION, MAINTENANCE, USE, PERFORMANCE, FAILURE, OR INTERRUPTION OF THE POSSIBILITY OF SUCH DAMAGES, AND LIMITS ITS LIABILITY TO REPAIR, REPLACEMENT, OR REFUND OF THE PURCHASE PRICE PAID, AT TRENDNET'S OPTION. THIS DISCLAIMER OF LIABILITY FOR DAMAGES WILL NOT BE AFFECTED IF ANY REMEDY PROVIDED HEREIN SHALL FAIL OF ITS ESSENTIAL PURPOSE.

Governing Law: This Limited Warranty shall be governed by the laws of the state of California.

Some TRENDnet products include software code written by third party developers. These codes are subject to the GNU General Public License ("GPL") or GNU Lesser General Public License ("LGPL").

Go to <http://www.trendnet.com/gpl> or <http://www.trendnet.com> Download section and look for the desired TRENDnet product to access to the GPL Code or LGPL Code. These codes are distributed WITHOUT WARRANTY and are subject to the copyrights of the developers. TRENDnet does not provide technical support for these codes. Please go to <http://www.gnu.org/licenses/gpl.txt> or <http://www.gnu.org/licenses/lgpl.txt> for specific terms of each license.

Certifications

This equipment has been tested and found to comply with FCC and CE Rules.

Operation is subject to the following two conditions:

- (1) This device may not cause harmful interference.
- (2) This device must accept any interference received. Including interference that may cause undesired operation.



Waste electrical and electronic products must not be disposed of with household waste. Please recycle where facilities exist. Check with you Local Authority or Retailer for recycling advice.



NOTE: THE MANUFACTURER IS NOT RESPONSIBLE FOR ANY RADIO OR TV INTERFERENCE CAUSED BY UNAUTHORIZED MODIFICATIONS TO THIS EQUIPMENT. SUCH MODIFICATIONS COULD VOID THE USER'S AUTHORITY TO OPERATE THE EQUIPMENT.

ADVERTENCIA

En todos nuestros equipos se mencionan claramente las características del adaptador de alimentación necesario para su funcionamiento. El uso de un adaptador distinto al mencionado puede producir daños físicos y/o daños al equipo conectado. El adaptador de alimentación debe operar con voltaje y frecuencia de la energía eléctrica domiciliar existente en el país o zona de instalación.



Product Warranty Registration

Please take a moment to register your product online.
Go to TRENDnet's website at <http://www.trendnet.com/register>