

User's Guide

TRENDnet[®]



Universal USB 3.0 Docking Station

TU3-DS2

Contents

Product Overview.....	2
Package Contents	2
Overview	2
Interface	3
Windows 8.1/ 8/ 7/ Vista/ XP Driver Installation.....	4
Using the Docking station in Windows	5
DisplayLink Utility	5
Display Modes	6
Extend	6
Mirror	7
Adjusting Resolution	7
Fit to TV	8
Mac OS 10.9 Driver Installation	9
Using the Docking station in Mac	11
Changing Monitor Resolution	11
Display Modes	12
Extend	12
Mirror	12

Product Overview



TU3-DS2

Package Contents

In addition to your router, the package includes:

- TU3-DS2
- Quick Installation Guide
- CD-ROM (Drivers & User's Guide)
- Power adapter (5 V DC, 4 A)
- VGA to DVI adapter
- USB 3.0 cable (90 cm/35 in.)

If any package contents are missing or damaged, please contact the retail store, online retailer, or reseller/distributor from which the product was purchased.

Overview

TRENDnet's Universal USB 3.0 Docking Station, model TU3-DS2, unlocks laptop and ultrabook workstation efficiency. Manage workstation devices such as multiple HD monitors, USB 3.0 storage devices, keyboard and mouse, printers, scanners, and other USB peripherals with fast Windows® and Mac® (OS 10.9) computer docking over a high speed USB 3.0 connection.

Fast Docking

Build your ideal workstation by connecting all devices to the TU3-DS2. Quickly dock your computer by simply connecting with the included high speed USB 3.0 cable.

Multi-HD Display

Add two 1080p HD displays to your workstation for a total of up to 3 displays (includes your computer's display). Connect an HDMI and DVI display to the TU3-DS2 and set your computer to extend mode.

Audio Support

Full 5.1 audio channel support is provided to the connected HDMI display. Analog audio headphone ports on the front of the docking station override HDMI display audio.

USB Ports

Connect USB 3.0 devices (ex: storage, flash drives, etc...) to the two 5 Gbps USB 3.0 ports. Network other USB devices to the four USB 2.0 ports (ex: keyboard, mouse, printer, scanner, etc...).

Gigabit Network Port

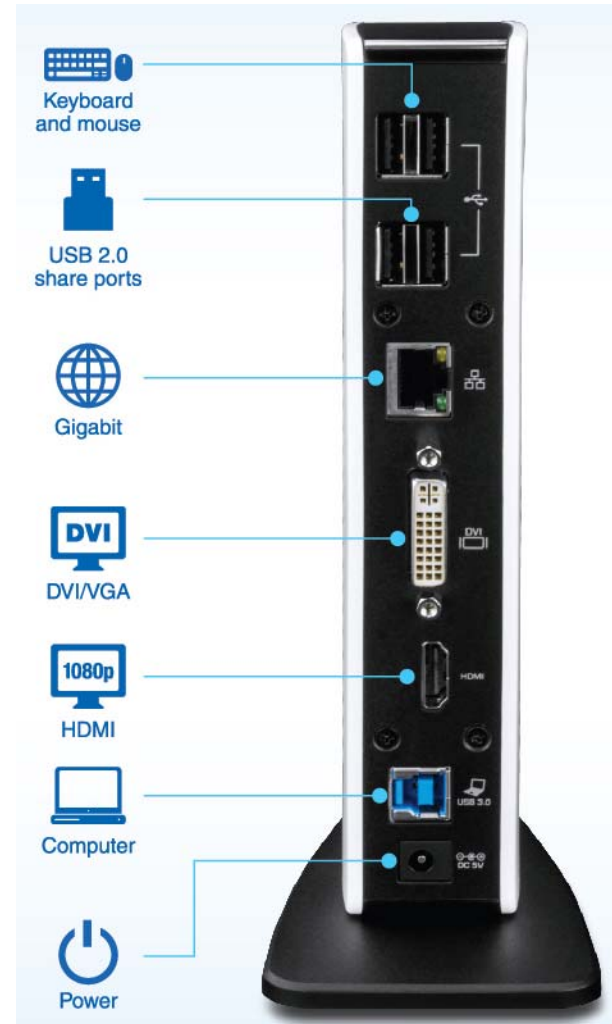
Connect to the network with a high performance Gigabit network port

Operating Systems

Compatible with Windows® and Mac® (OS 10.9) operating systems

**Not a charging station: No special functionality for charging tablets, mobile devices, or other peripherals

Interface



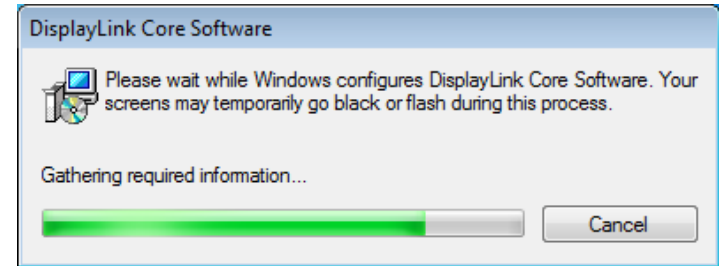
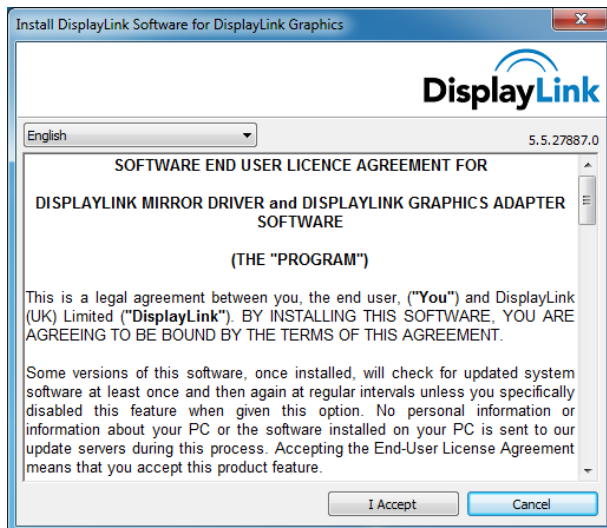
Windows 8.1/ 8/ 7/ Vista/ XP Driver Installation

Caution: DO NOT connect the Ethernet adapter to your computer before you install the provided driver. You will be instructed to do so later.

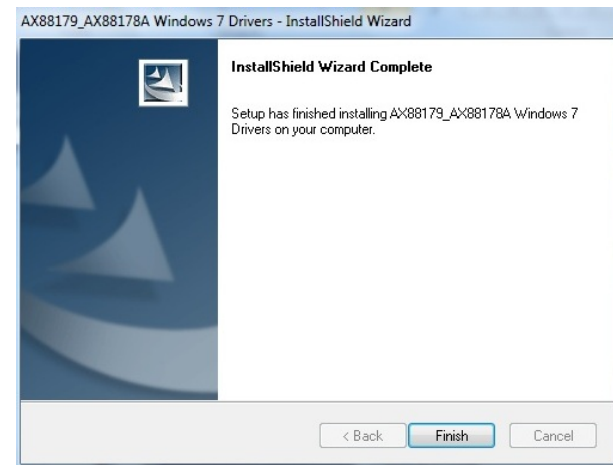
1. Insert the included CD, click on **Install Driver** option



2. Click on **Agree** to install the driver and driver/utility will install



3. Click **Finish** to complete the driver installation



Now the installation is completed. You can connect the adapter to your USB 2.0/3.0 port then connect your network cable from the router to the docking station.

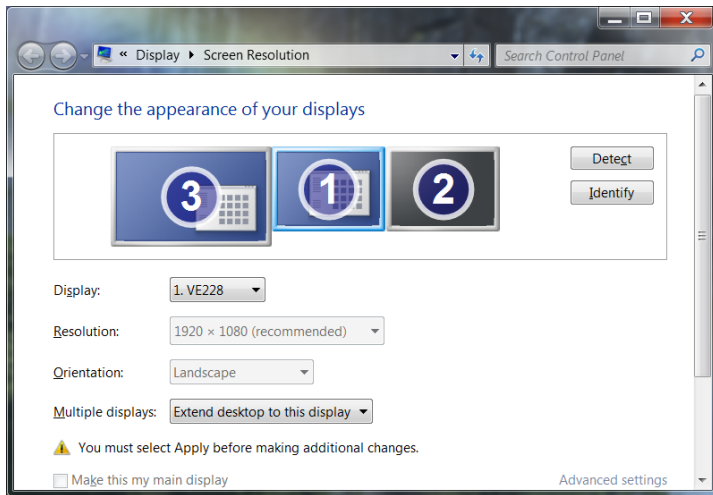
The Link LED should light up green to indicate a proper physical connection between the docking station and the network. If the Link LED doesn't light up, please verify the cable connections between all the network devices.

You can also connect additional USB 2.0/3.0 devices to the Hub.

Using the Docking station in Windows

Upon completing the software installation, the task tray utility icon should appear in your desktop task tray at the bottom right-hand corner. The task tray utility icon will not be available until your computer is connected to the docking station. The general settings allow you to setup your video and audio configuration of your computer display and check for driver/ and utility updates.

First, right click on your desktop and select Screen Resolution and identify your monitors.



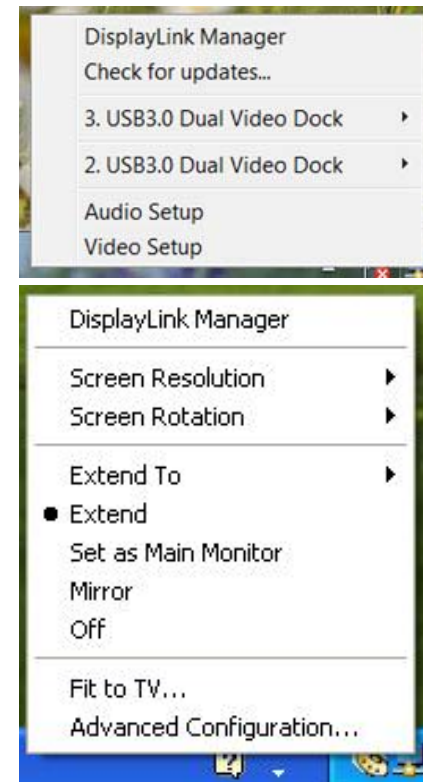
Click the task tray utility icon to configure your adapter settings.



Note: If you do not see the task tray utility icon, please check your USB connection.

DisplayLink Utility

The DisplayLink utility allows you to configure the display mode, screen resolution, and physical arrangement for each connected monitor. When you have 2 additional monitors connected to the docking station, you will see the monitors listed separately (see image below). The number follows the monitor number identified from your computer. Select the correct monitor and then configure the display modes.

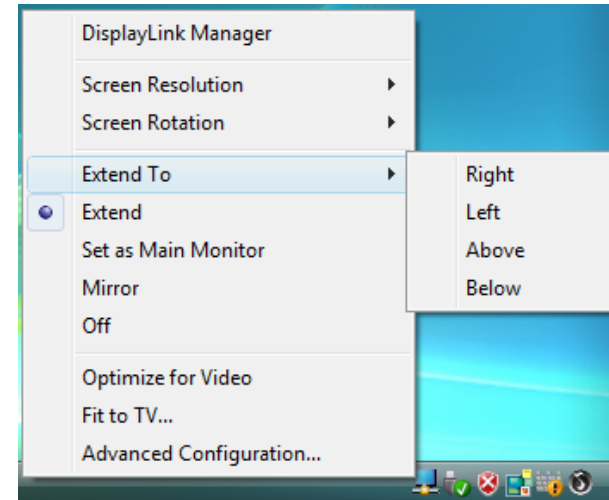
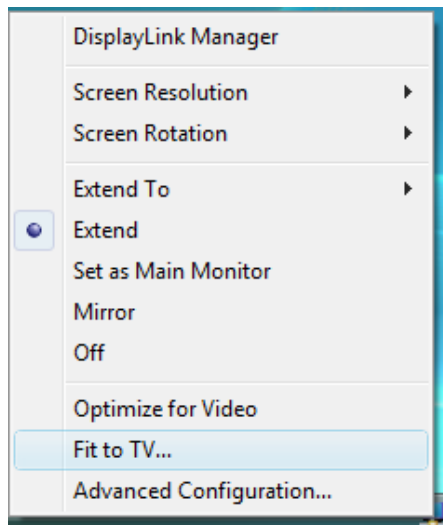


Display Modes

There are several ways you can utilize the monitor attached to the adapter. The secondary monitor can be configured to use either “mirror mode”, “extended mode” or be the primary display as described in this section.

Extend

In this so-called “extended mode”, this model is used by default. Your display will be spread over the secondary monitor(s). This mode allows you to perform multiple tasks more effectively without overlapping windows.

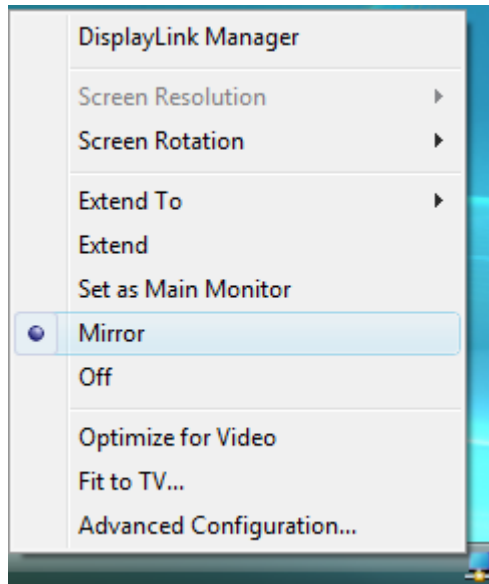


Click on the **DisplayLink** icon and select **Extend to Right/Left/Above/Below** to configure the monitor orientation as shown in the above picture, or use one of the settings described below.

Mirror

This mode is referred to as “mirror” or “clone” mode. In this mode, the monitor attached to the USB to HDMI Adapter duplicates what is on the primary display.

Click on the **DisplayLink Device** icon and select **Mirror** to duplicate your display. In Windows® 7, the **DisplayLink Device** icon will be hidden. Please click the **arrow sign** and right click the **DisplayLink Device** icon and select **Advanced**. Or, position the mouse anywhere on your computer's desktop, right-click and select **Screen Resolution**.



Only one external monitor can be mirrored to your computer's display.

Adjusting Resolution

There are three components that make up the screen mode:

Resolution: In common usage, this refers to the number of pixels displayed on screen horizontally and vertically.

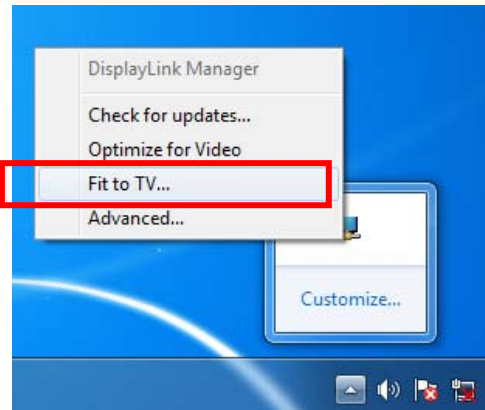
Refresh rate: Measures the speed that the entire screen is rescanned. Higher frequencies reduce flicker.

Some monitors advertise the supported modes through the video connector. If this is the case, the adapter identifies the supported modes from the monitor. If the monitor does not advertise the supported modes, the adapter software chooses a set of common screen modes for the monitor.

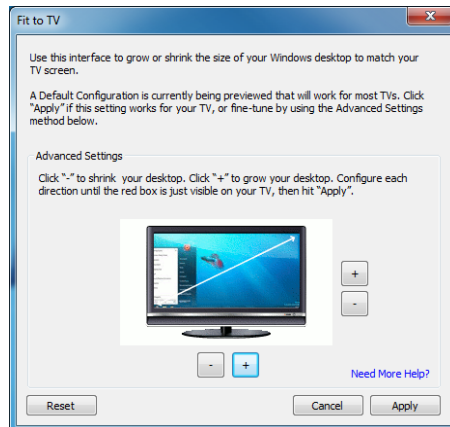
Fit to TV

The "Fit to TV" function is for HDMI TV connections. A new user interface option allows the correction of over scan on TVs when using a USB to HDMI adapter. The "Fit to TV" function allows a user to change the size of their Windows desktop to allow the entire desktop to be viewed.

1. Click on the DisplayLink Device icon and select "Fit to TV" to enable this function.



2. The following window will appear.



3. The red border shows the size of the new Windows desktop...



4. Use the "+" and "-" controls on the Fit to TV GUI to change the size of the red border until it fits on the TV screen.

Note: Finer configuration of the size of the border can be achieved by holding down the CTRL key and clicking the "+" and "-".

Before:



Once the red border is at the edges of the TV screen, click "Apply" to resize the Windows desktop.

Change the appearance of your displays



Display: 2. L245WP
 Resolution: 1920 × 1080 (recommended)

After:



Change the appearance of your displays

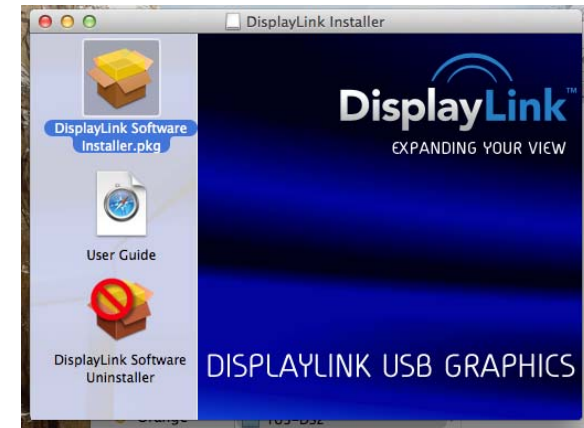


Display: 2. L245WP
 Resolution: 1536 × 864 (recommended)

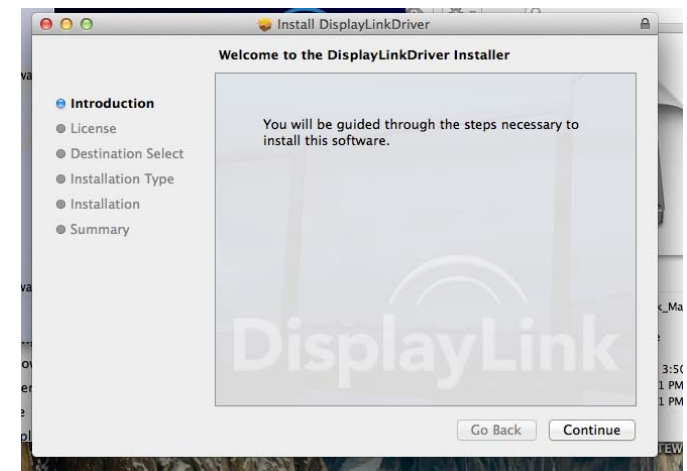
Note: The Fit to TV function only works in extend mode and does not support rotated modes.

Mac OS 10.9 Driver Installation

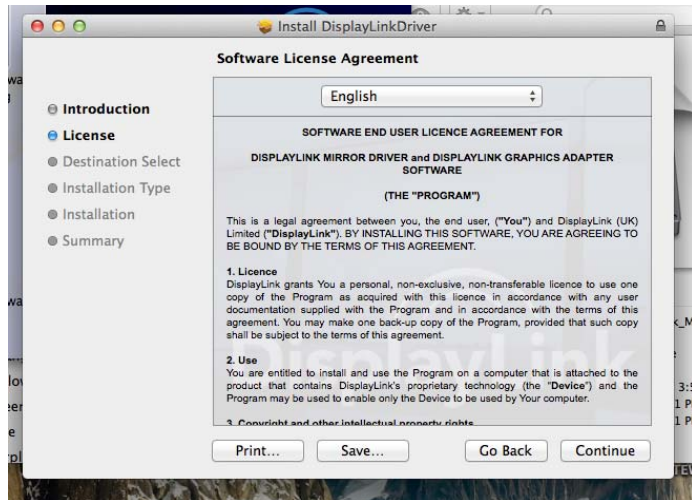
1. Insert the provided driver CD into your CD-ROM drive and then browse to the Mac folder. Double-click **DisplayLink_MacOS.dmg** to launch the setup screen. Click on the **DisplayLink Software installer.pkg** icon to install the utility.



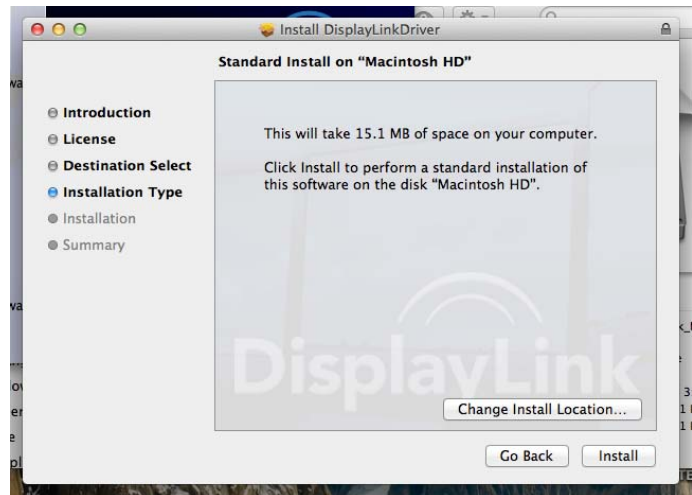
2. The driver installer screen will appear. Click **Continue**.



- Click **Continue** to Agree the software license agreement.



- When the screen below appears, please click **Installation**.



- Please enter your password when prompted.



- It will take for a while to install the driver. Once the installation is completed, restart the system.

Now the installation is completed. You can connect the docking station to your USB 2.0/3.0 port and then connect your network cable to the docking station and other devices.

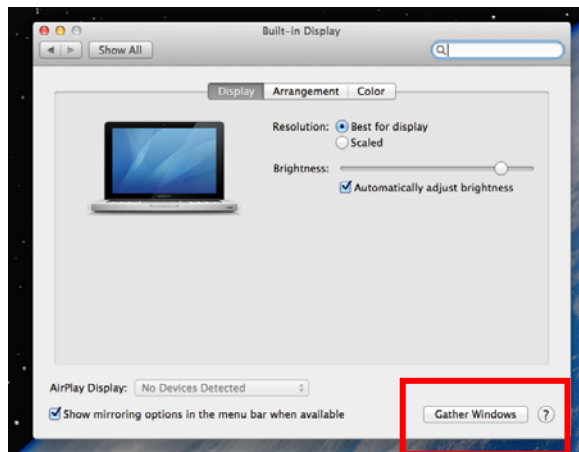
The Link LED should light up green to indicate a proper physical connection between the docking station and the network. If the Link LED doesn't light up, please verify the cable connections between all the network devices.

Using the Docking station in Mac

Once your Mac system has been restarted, you are now able to click on the **System Preferences** icon and go into the **Display** settings.



The built-in display screen will appear, click on the **Gather Windows** tab.

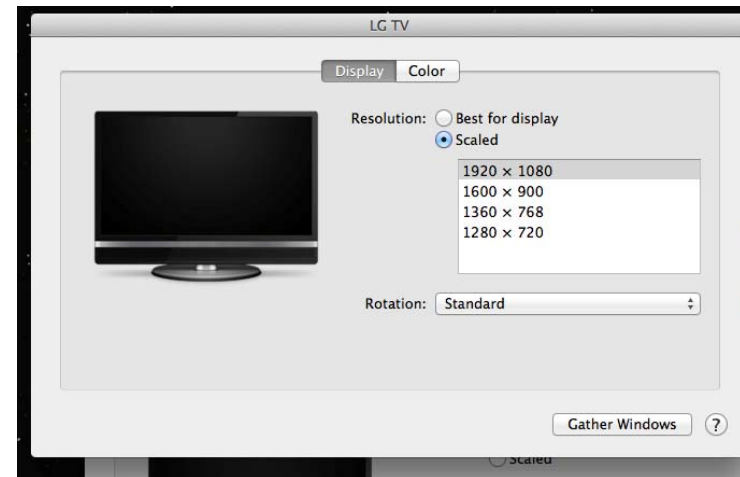


Changing Monitor Resolution

All connected displays will appear.



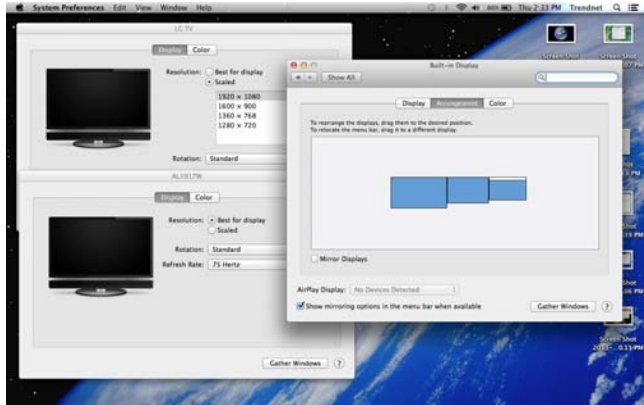
If you would like to change the display resolution, select the monitor and then the appropriate supported resolution.



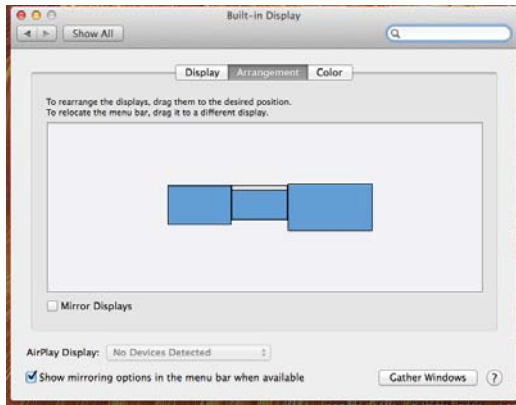
Display Modes

Extend

When additional monitors are connected, Mac OS will default the displays into extended mode.

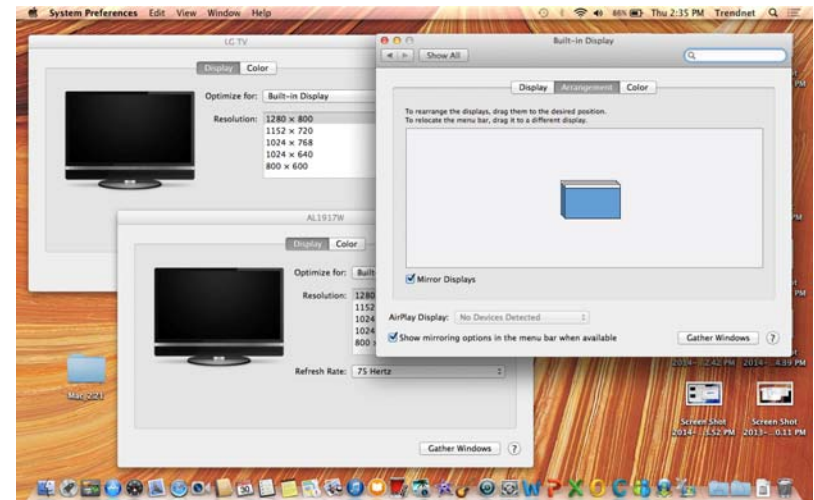
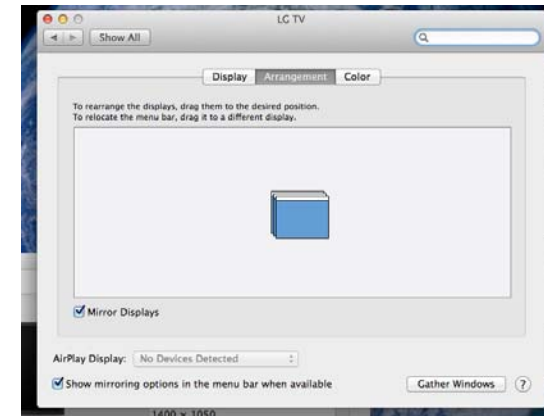


The monitor that's shown with white bar on top is the built-in display; the others are the extended displays. You can click on a display and drag it to the left or right to determine the extended location.



Mirror

When in Mirror mode, additional displays will duplicate the main display's contents. Click the **"Mirror Displays"** option to enable this feature. All additional displays will also maintain the main display's resolution.



Federal Communication Commission Interference Statement

This equipment has been tested and found to comply with the limits for a Class B digital device, pursuant to Part 15 of the FCC Rules. These limits are designed to provide reasonable protection against harmful interference in a residential installation. This equipment generates uses and can radiate radio frequency energy and, if not installed and used in accordance with the instructions, may cause harmful interference to radio communications. However, there is no guarantee that interference will not occur in a particular installation. If this equipment does cause harmful interference to radio or television reception, which can be determined by turning the equipment off and on, the user is encouraged to try to correct the interference by one of the following measures:

- Reorient or relocate the receiving antenna.
- Increase the separation between the equipment and receiver.
- Connect the equipment into an outlet on a circuit different from that to which the receiver is connected.
- Consult the dealer or an experienced radio/TV technician for help.

FCC Caution: Any changes or modifications not expressly approved by the party responsible for compliance could void the user's authority to operate this equipment.

This device complies with Part 15 of the FCC Rules. Operation is subject to the following two conditions: (1) This device may not cause harmful interference, and (2) this device must accept any interference received, including interference that may cause undesired operation.

IMPORTANT NOTE:**FCC Radiation Exposure Statement:**

This equipment complies with FCC radiation exposure limits set forth for an uncontrolled environment. This equipment should be installed and operated with minimum distance 20cm between the radiator & your body.

This transmitter must not be co-located or operating in conjunction with any other antenna or transmitter.

The availability of some specific channels and/or operational frequency bands are country dependent and are firmware programmed at the factory to match the intended destination. The firmware setting is not accessible by the end user.

RoHS

This product is RoHS compliant.

**Europe – EU Declaration of Conformity****Europe – EU Declaration of Conformity**

This device complies with the essential requirements of the Directive 2004/108/EC, /2006/95/EC and 2009/125/EC:

EN 55022: 2010 Class B

EN 55024: 2010

EN 61000-3-2: 2006 + A1: 2009 + A2: 2009

EN 61000-3-3: 2008

EN 60950-1: 2006 + A11: 2009 + A1: 2010 + A12: 2011

Regulation (EC) No. 278 / 2009

EN 60950-1: 2006 + A11 : 2009 + A1 : 2010 + A2 : 2011 : Safety of Information Technology Equipment including electrical business equipment



Limited Warranty

TRENDnet warrants its products against defects in material and workmanship, under normal use and service, for the following lengths of time from the date of purchase.

TU3-DS2 – 2 Years Warranty

AC/DC Power Adapter, Cooling Fan, and Power Supply carry 1 year warranty.

If a product does not operate as warranted during the applicable warranty period, TRENDnet shall reserve the right, at its expense, to repair or replace the defective product or part and deliver an equivalent product or part to the customer. The repair/replacement unit's warranty continues from the original date of purchase. All products that are replaced become the property of TRENDnet. Replacement products may be new or reconditioned. TRENDnet does not issue refunds or credit. Please contact the point-of-purchase for their return policies.

TRENDnet shall not be responsible for any software, firmware, information, or memory data of customer contained in, stored on, or integrated with any products returned to TRENDnet pursuant to any warranty.

There are no user serviceable parts inside the product. Do not remove or attempt to service the product by any unauthorized service center. This warranty is voided if (i) the product has been modified or repaired by any unauthorized service center, (ii) the product was subject to accident, abuse, or improper use (iii) the product was subject to conditions more severe than those specified in the manual.

Warranty service may be obtained by contacting TRENDnet within the applicable warranty period and providing a copy of the dated proof of the purchase. Upon proper submission of required documentation a Return Material Authorization (RMA) number will be issued. An RMA number is required in order to initiate warranty service support for all TRENDnet products. Products that are sent to TRENDnet for RMA service must have the RMA number marked on the outside of return packages and sent to TRENDnet prepaid, insured and packaged appropriately for safe shipment. Customers shipping from outside of the USA and Canada are responsible for return shipping fees. Customers shipping from outside of the USA are responsible for custom charges, including but not limited to, duty, tax, and other fees.

WARRANTIES EXCLUSIVE: IF THE TRENDNET PRODUCT DOES NOT OPERATE AS WARRANTED ABOVE, THE CUSTOMER'S SOLE REMEDY SHALL BE, AT TRENDNET'S OPTION, REPAIR OR REPLACE. THE FOREGOING WARRANTIES AND REMEDIES ARE EXCLUSIVE AND ARE IN LIEU OF ALL OTHER WARRANTIES, EXPRESSED OR IMPLIED, EITHER IN FACT OR BY OPERATION OF LAW, STATUTORY OR OTHERWISE, INCLUDING

WARRANTIES OF MERCHANTABILITY AND FITNESS FOR A PARTICULAR PURPOSE. TRENDNET NEITHER ASSUMES NOR AUTHORIZES ANY OTHER PERSON TO ASSUME FOR IT ANY OTHER LIABILITY IN CONNECTION WITH THE SALE, INSTALLATION MAINTENANCE OR USE OF TRENDNET'S PRODUCTS.

TRENDNET SHALL NOT BE LIABLE UNDER THIS WARRANTY IF ITS TESTING AND EXAMINATION DISCLOSE THAT THE ALLEGED DEFECT IN THE PRODUCT DOES NOT EXIST OR WAS CAUSED BY CUSTOMER'S OR ANY THIRD PERSON'S MISUSE, NEGLIGENCE, IMPROPER INSTALLATION OR TESTING, UNAUTHORIZED ATTEMPTS TO REPAIR OR MODIFY, OR ANY OTHER CAUSE BEYOND THE RANGE OF THE INTENDED USE, OR BY ACCIDENT, FIRE, LIGHTNING, OR OTHER HAZARD.

LIMITATION OF LIABILITY: TO THE FULL EXTENT ALLOWED BY LAW TRENDNET ALSO EXCLUDES FOR ITSELF AND ITS SUPPLIERS ANY LIABILITY, WHETHER BASED IN CONTRACT OR TORT (INCLUDING NEGLIGENCE), FOR INCIDENTAL, CONSEQUENTIAL, INDIRECT, SPECIAL, OR PUNITIVE DAMAGES OF ANY KIND, OR FOR LOSS OF REVENUE OR PROFITS, LOSS OF BUSINESS, LOSS OF INFORMATION OR DATA, OR OTHER FINANCIAL LOSS ARISING OUT OF OR IN CONNECTION WITH THE SALE, INSTALLATION, MAINTENANCE, USE, PERFORMANCE, FAILURE, OR INTERRUPTION OF THE POSSIBILITY OF SUCH DAMAGES, AND LIMITS ITS LIABILITY TO REPAIR, REPLACEMENT, OR REFUND OF THE PURCHASE PRICE PAID, AT TRENDNET'S OPTION. THIS DISCLAIMER OF LIABILITY FOR DAMAGES WILL NOT BE AFFECTED IF ANY REMEDY PROVIDED HEREIN SHALL FAIL OF ITS ESSENTIAL PURPOSE.

Governing Law: This Limited Warranty shall be governed by the laws of the state of California.

Some TRENDnet products include software code written by third party developers. These codes are subject to the GNU General Public License ("GPL") or GNU Lesser General Public License ("LGPL").

Go to <http://www.trendnet.com/gpl> or <http://www.trendnet.com> Download section and look for the desired TRENDnet product to access to the GPL Code or LGPL Code. These codes are distributed WITHOUT WARRANTY and are subject to the copyrights of the developers. TRENDnet does not provide technical support for these codes. Please go to <http://www.gnu.org/licenses/gpl.txt> or <http://www.gnu.org/licenses/lgpl.txt> for specific terms of each license.

2014/3/30 V1



Product Warranty Registration

Please take a moment to register your product online.
Go to TRENDnet's website at <http://www.trendnet.com/register>

TRENDnet
20675 Manhattan Place
Torrance, CA 90501. USA