

# TU-ET100C

**USB 1.1 Fast Ethernet Adapter  
Quick Installation Guide**

**Guide d'installation rapide de  
l'adaptateur Fast Ethernet USB 1.1 TU-ET100C**

**Kurzanleitung zur Installation des  
Fast-Ethernet-Adapters TU-ET100C USB 1.1**

**Guía de instalación rápida del  
adaptador Ethernet Fast USB 1.1 TU-ET100C**

**Version 10.21.04**



**TRENDnet**<sup>®</sup>  
TRENDware, USA  
**What's Next in Networking**

# Table of Contents

English .....	1
1. Prepare for Installation .....	1
2. Product Detail .....	2
3. Hardware Installation .....	3
4. Driver Installation .....	4
5. Verify Installation .....	15
Troubleshooting .....	18

# English QIG

## 1. Prepare for Installation

Thank you for purchasing TRENDnet's TU-ET100C USB 1.1 Fast Ethernet Adapter.

This guide will help you set-up your USB 1.1 Fast Ethernet Adapter. Following the installations should be quick and easy. If you run into problems, please refer to the Troubleshooting section. If you need further technical support, please visit [www.TRENDNET.com](http://www.TRENDNET.com) or call technical support by phone.

### Verify Package Contents

Please make sure you have everything in the box:



### Minimum System Requirements

1. Pentium 300Mhz or faster with at least 64MB RAM
2. Computer with an available USB port
3. Windows XP, 2000, ME, 98SE

## 2. Product Detail

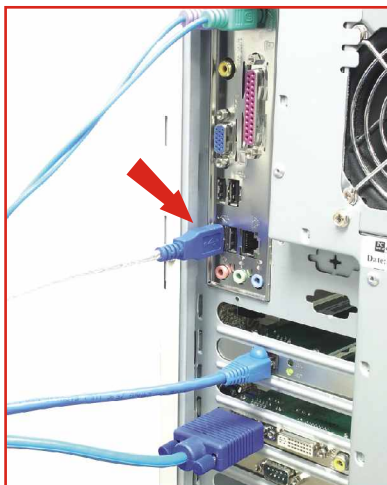
The USB 1.1 Fast Ethernet Adapter has one RJ-45 connector and an attached USB cable.



RJ-45 connector

## 3. Hardware Installation

1. Turn on your computer and allow your operating system to fully load into the system.
2. Connect the Type-A connector of your TU-ET100C into a USB slot of your desktop or notebook.
3. Connect one end of the CAT-5 cable into the TU-ET100C's RJ-45 port, and connect the other end into your switch, router, cable modem, or DSL modem.



## 4. Driver Installation

### Windows XP

After inserting the TU-ET100C into one of your USB ports, the “Found New Hardware” message appears. You will notice a message at the lower right hand corner of your desktop.



1. Allow Windows XP to install your drivers. You will get another message telling you that your TU-ET100C is ready for use.



Your driver installation is now complete.

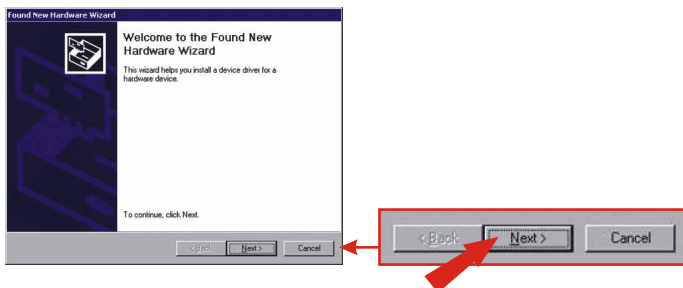
**Note:** If you would like to verify the TU-ET100C has been installed properly for your windows, go to the Verify Installation section.

## Windows 2000

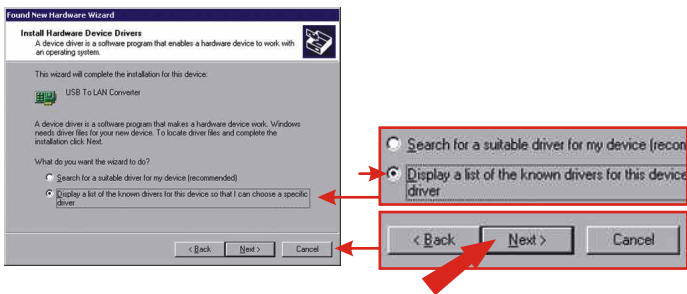
After inserting the TU-ET100C into one of your USB slots, the “Found New Hardware” message appears.



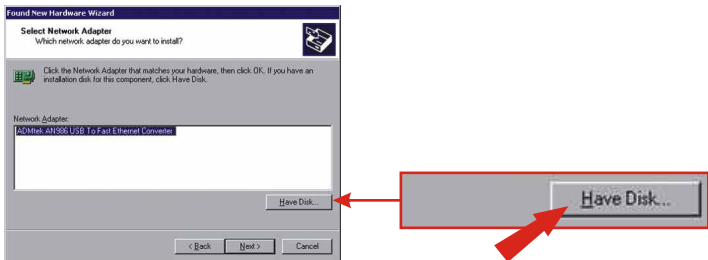
1. Insert the floppy disk that came with this product. Click **Next**.



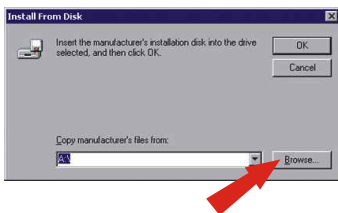
2. Select **Display a list of known drivers for this device**. Click **Next**.



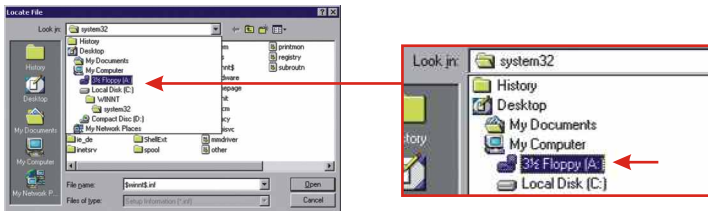
### 3. Click **Have Disk**.



### 4. Click **Browse...**

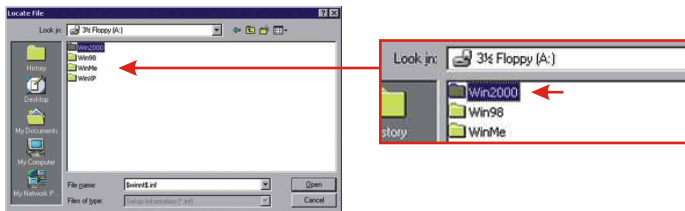


### 5. Click the down arrow by the **Look in** text box and click **3½ Floppy (A:)**.

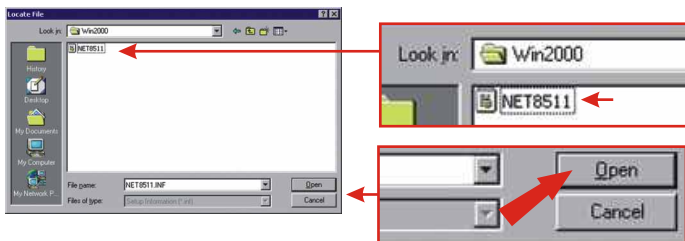




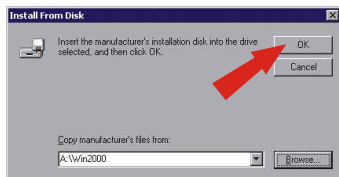
6. Double click **Win2000**.



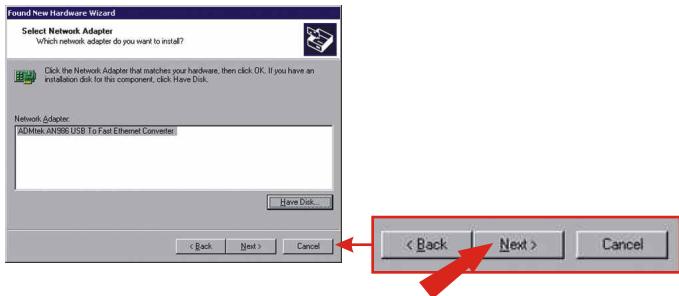
7. Click **NET8511** and click **Open**.



8. Click **OK**.



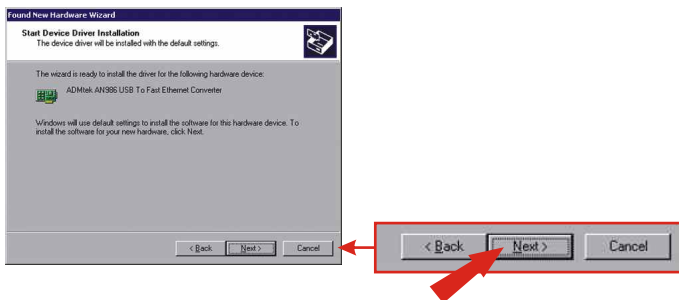
## 9. Click Next.



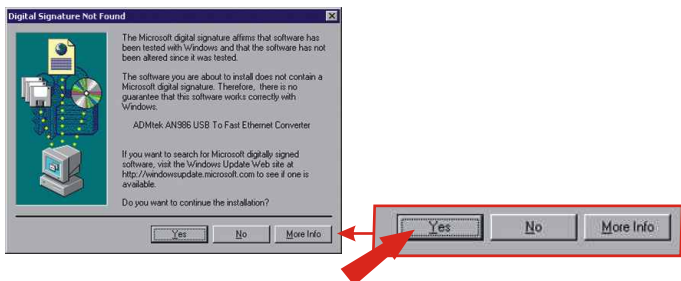
## 10. Click Yes.



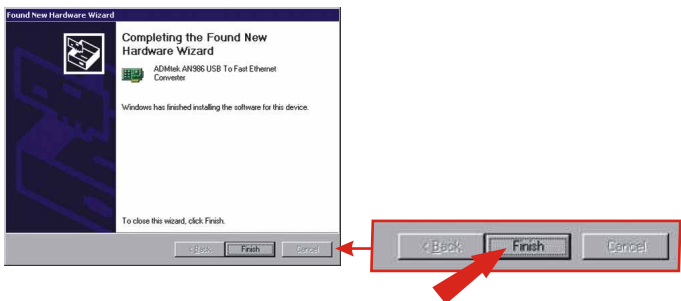
## 11. Click Next.



## 12. Click Yes.



## 13. Click Finish.



Your driver installation is now complete.

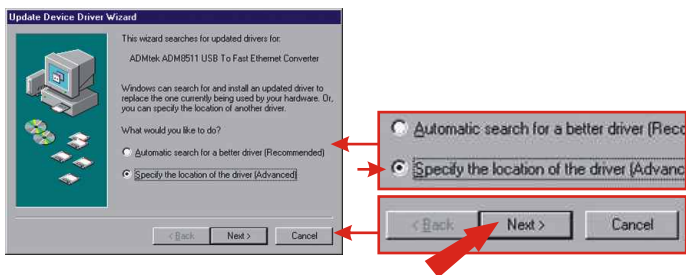
**Note:** If you would like to verify the TU-ET100C has been installed properly for your windows, go to the Verify Installation section.

## Windows ME

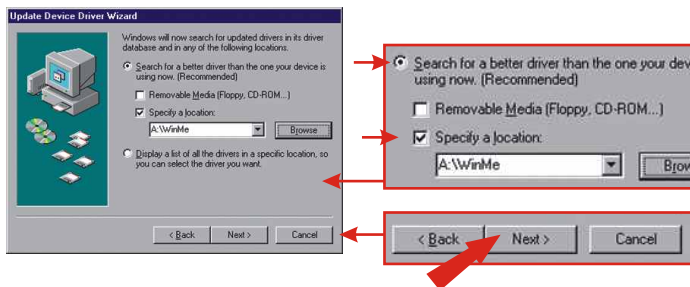
After inserting the TU-ET100C into one of your USB slots, the “Found New Hardware” message appears.



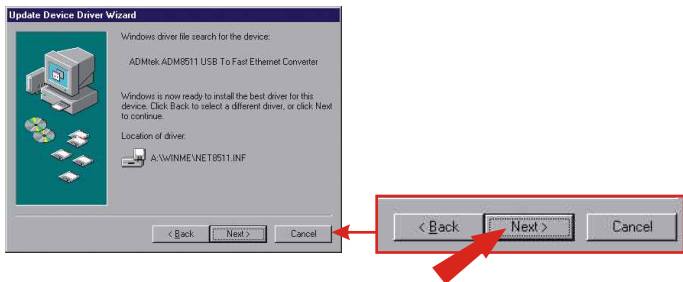
1. Insert the floppy disk that came with this product. Click **Specify the location** of the driver. Click **Next**.



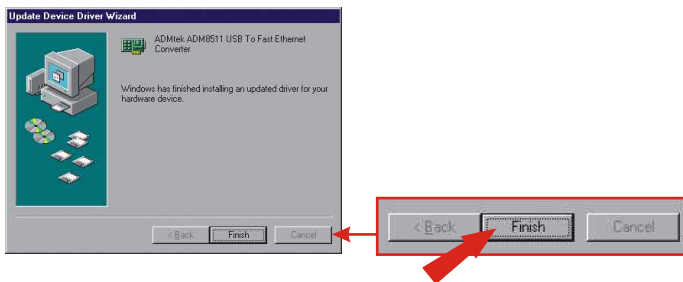
2. Click **Search for a better driver**, click **Specify a location:** and type in A:\WinMe. Click **Next**.



### 3. Click Next.



### 4. Click Finish.



Your driver installation is now complete.

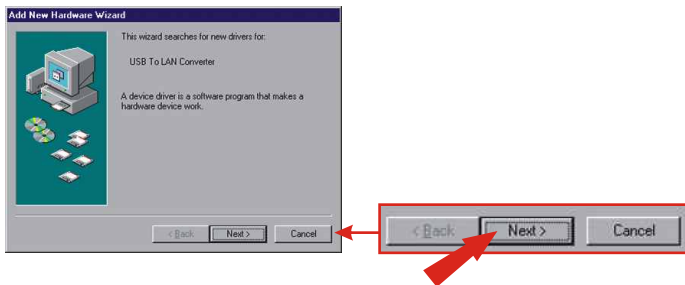
**Note:** If you would like to verify the TU-ET100C has been installed properly for your windows, go to the Verify Installation section.

## Windows 98SE

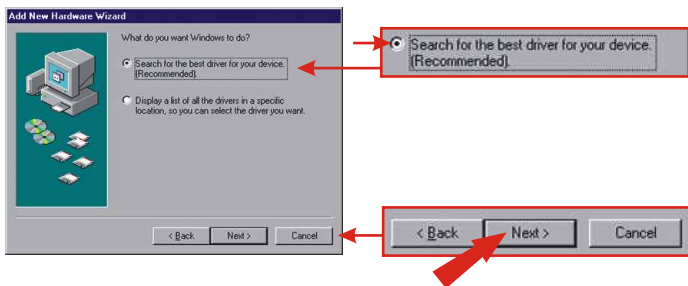
After inserting the TU-ET100C into one of your USB slots, the “Found New Hardware” message appears.



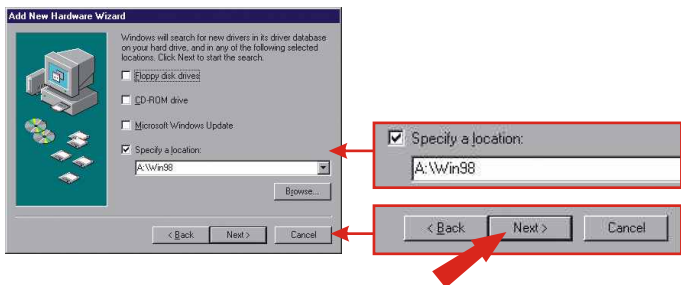
### 1. Click **Next**.



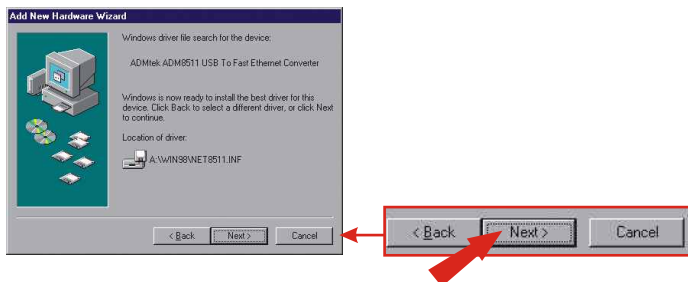
### 2. Insert the floppy disk that came with this product. Click **Specify the location of the driver**. Click **Next**.



3. Click **Specify a location:** and type in **A:\Win98**. Click **Next**.



4. Click **Next**.

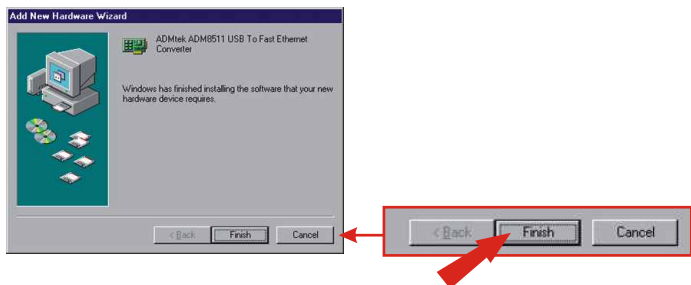


5. Insert the Windows 98SE CD-ROM into your computer's CD-ROM drive.

6. Click **OK**.



## 7. Click Finish.



## 8. Click Yes.



Your driver installation is now complete.

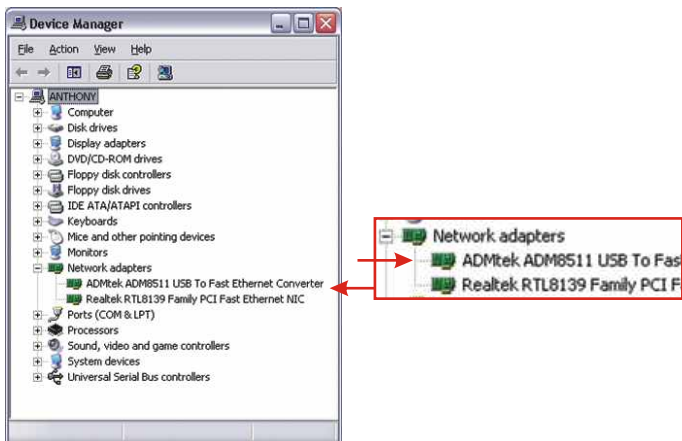
**Note:** If you would like to verify the TU-ET100C has been installed properly for your windows, go to the Verify Installation section.



# 5. Verify Installation

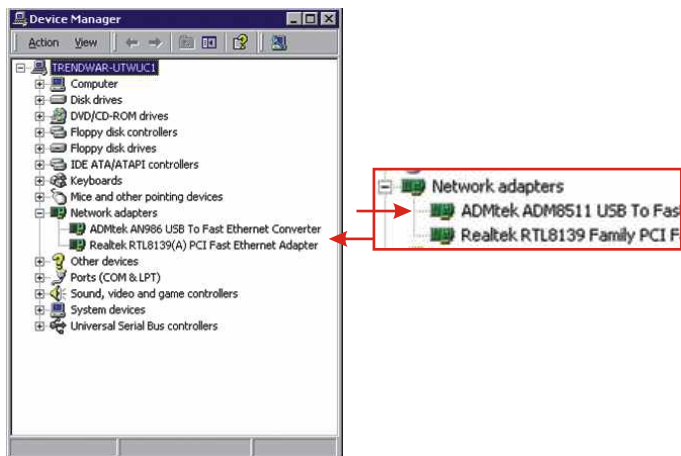
## Windows XP

1. Click **Start**, and then click **Control Panel**.
2. Double-click the **System** icon. On the **Hardware** tab, click the **Device Manager** button.
3. Expand the “Network Adapters” heading to verify that the **ADMtek ADM8511 USB to Fast Ethernet Converter** has been installed.



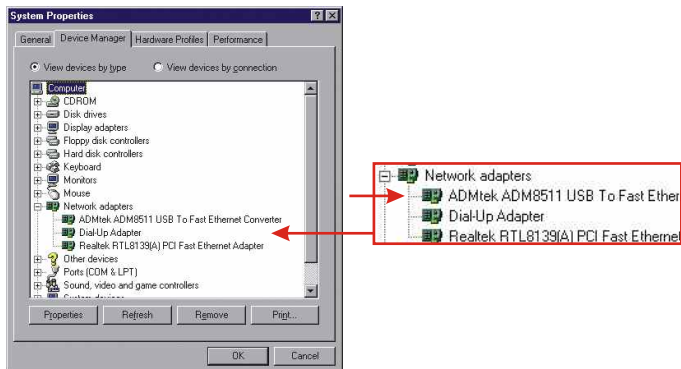
## Windows 2000

1. Click **Start**, highlight **Settings**, and then click on **Control Panel**.
2. Double-click the **System** icon. On the **Hardware** tab, click the **Device Manager** button.
3. Expand the “Network Adapters” heading to verify that the **ADMtek ADM8511 USB to Fast Ethernet Converter** has been installed.



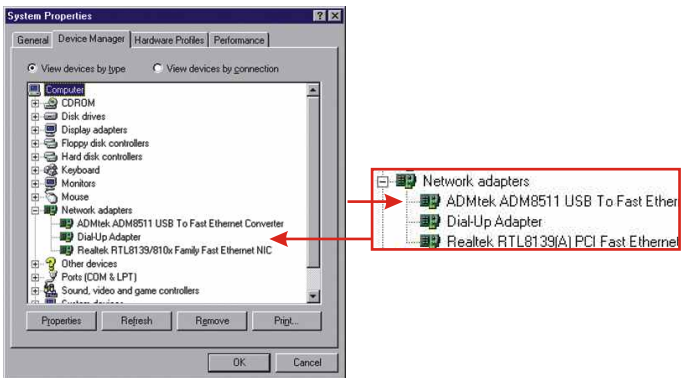
## Windows ME

1. Click **Start**, highlight **Settings**, and then click on **Control Panel**.
2. Double-click the **System** icon, and click the **Device Manager** tab.
3. Expand the “Network Adapters” heading to verify that the **ADMtek ADM8511 USB to Fast Ethernet Converter** has been installed.



## Windows 98SE

1. Click **Start**, highlight **Settings**, and then click on **Control Panel**.
2. Double-click the **System** icon, and click the **Device Manager** tab.
3. Expand the “Network Adapters” heading to verify that the **ADMtek ADM8511 USB to Fast Ethernet Converter** has been installed.



# Troubleshooting

## **Q1. Can I connect or disconnect TU-ET100C while the computer is on?**

**A1.** Yes, you can connect or disconnect TU-ET100C while the computer is on because the USB interface is Plug-and-Play compliant and hot-pluggable.

## **Q2. After successful installation of the TU-ET100C USB Fast Ethernet, I connected my USB device into a USB slot, but it does not seem to work. What should I do?**

**A2.** Make sure that the CAT-5 cable is connected properly into your switch, or broad-band modem. Double check the connection at the other end of the CAT-5 cable, and verify that the cable is inserted properly into your TU-ET100C. Also, verify that your switch or your broad-band modem is getting any power.

## **Q3. When I verify the installation of the TU-ET100C, I see an exclamation point on my network adapter. What should I do?**

**A3.** Go to Control Panel and double-click the System icon. Go to the Device Manager and expand the Network adapters heading. Double-click ADMtek ADM8511 USB to Fast Ethernet Converter (the icon that has an exclamation point on it), and click the Driver tab. On the Driver tab, click Update Driver. Use 4.Driver Installation in this installation manual to guide you in installing your driver.

If you have any questions regarding the TU-ET100C, please contact Trendware Technical Support Department.

### **Contact Technical Support**

Telephone: +1-310-626-6252

Fax: +1-310-626-6267

Website: [www.TRENDNET.com](http://www.TRENDNET.com)

E-mail: [support@trendware.com](mailto:support@trendware.com)

### **Technical Support Hours**

7:00AM ~ 6:00PM, Monday through Friday

Pacific Standard Time (except holidays)

## **Certifications**

This equipment has been tested and found to comply with FCC and CE Rules. Operation is subject to the following two conditions:

- (1) This device may not cause harmful interference.
- (2) This device must accept any interference received.  
Including interference that may cause undesired operation.





## Product Warranty Registration

Please take a moment to register your product online.  
Go to TRENDware's website at <http://www.TRENDNET.com>

**TRENDware International, Inc.**  
3135 Kashiwa Street  
Torrance, CA 90505

**<http://www.TRENDNET.com>**