



Quick Installation Guide



TPL-302E

Table of Contents

Русский	1
1. Что нужно сделать в самом начале	1
2. Порядок установки	2
Troubleshooting	5

1. Что нужно сделать в самом начале



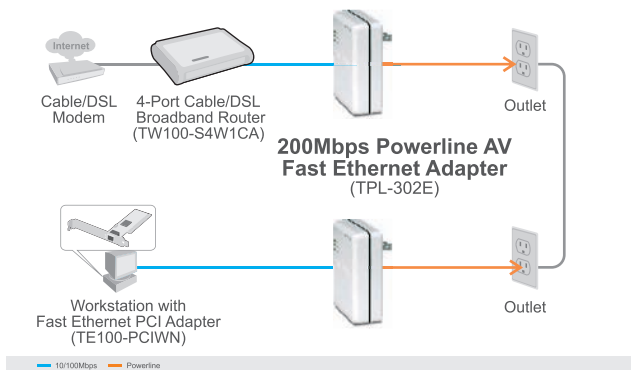
Содержимое упаковки

- TPL-302E
- CD-ROM-диск со служебной программой
- Руководство по быстрой установке

Системные требования

- Дискковод CD-ROM
- Настольный или мобильный компьютер с установленным сетевым адаптером
- ЦП: 300 МГц или выше / 800 МГц или выше (Windows Vista)
- Память: 256 МБ или более / 512 МБ или более (Windows Vista)
- Наличие сети Powerline AV
- Наличие проводной сети (10/100 Мбит/с) при использовании в качестве моста устройства TPL-302E

Применение



2. Порядок установки

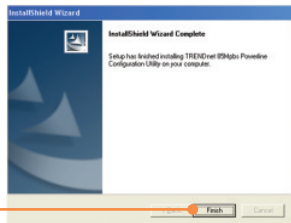
Это важно! НЕ устанавливайте устройство TPL-302E до того, как получите на то указание.

Пользователям Windows

1. Установите **CD-ROM-диск со служебной программой** в дисковод CD-ROM компьютера и выберите **Install Utility**.



2. Следуйте указаниям из **InstallShield** и нажмите на кнопку **Завершение**.



3. Перепишите 12-значный пароль устройства, указанный на задней его стороне.



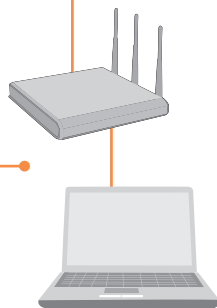
Примечание:

1. НЕ присоединяйте устройство TPL-302E к силовой шине или устройству защиты от бросков напряжения.
2. Чтобы устройства TPL-302E воспринимали друг друга, каждое из них должно находиться на одном и том же прерывателе.
3. К сети можно подключить до 16 устройств TPL-302E.

4. Присоедините к сетевой розетке устройство TPL-302E.



5. Подключите кабель CAT-5 от устройства TPL-302E к маршрутизатору (напр., TEW-633GR). Затем подключите кабель CAT-5 от маршрутизатора к компьютеру.



6. Подключите второе устройство TPL-302E к розетке, у которой расположен удаленный компьютер, беспроводная точка доступа или другое устройство со встроенным гнездом Ethernet.



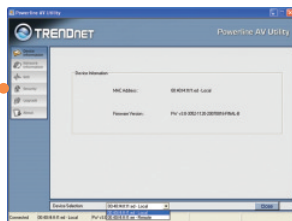
Примечание: Имя сети по умолчанию - TRENDnet. Если идентификатор имеющейся у вас сети Powerline HE указан как TRENDnet, то в этой служебной программе его нужно изменить.

7. Выберите на рабочем столе **TRENDnet Powerline AV Utility**.

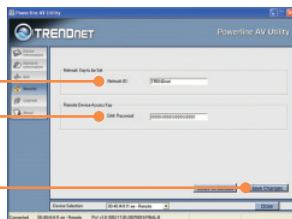


8. Выберите **Локальное** или **Удаленное** устр-во, затем **Безопасность**.

Приме-чание: сначала задайте конфигура-цию для **Удаленного** устройства.

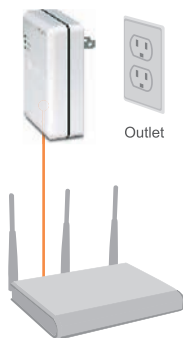


9. Если нужно изменить **Идентификатор сети**, укажите нужный идентификатор. При конфигурировании удаленного устройства нужно указать его пароль (см. шаг 3). Затем нажмите на кнопку **Сохранить изменения**.



10. Повторите шаги 8-9 для второго устр-ва TPL-302E.

11. Подключите кабель CAT-5 от устройства TPL-302E к удаленному компьютеру, беспроводной точке доступа (напр., TEW-630APB) или другому устройству со встроенным гнездом Ethernet.



Настройка конфигурации Powerline завершена.

Подробнее о конфигурации устройства TPL-302E и дополнительных настройках можно узнать в руководстве пользователя на имеющемся диске CD-ROM со служебной программой или на сайте компании TRENDnet по адресу www.trendnet.com

Q1: I inserted the TPL-302E CD-ROM into my computer's CD-ROM Drive and the installation menu does not appear automatically. What should I do?

A1: If the installation menu does not appear automatically, click Start, click Run, and type D:\Autorun.exe where "D" in "D:\Autorun.exe" is the letter assigned to your computer's CD-ROM Drive. And then click OK to start the installation.

Q2: I have verified that my Powerline device is connected to my workstation, but I cannot detect other Powerline devices. What should I do?

A2: First, verify that you are using Cat-5e Ethernet cables. Second, open up the Powerline AV Utility and click scan. Third, verify the network name of your Powerline network. Then click on the security link in the TRENDnet Powerline Utility, type in the network name and click **Save changes**. Fourth, verify that the power outlet the TPL-302E is plugged into is on the same electrical power distribution and/or circuit breaker.

Q3: I can detect my Powerline devices on my Powerline network, but I cannot connect to the Internet. What should I do?

A3: First, make sure you are not connecting the device into a power strip or surge protector. Second, make sure that your Router is connected to the internet. Third, verify that the TCP/IP settings are set to **Obtain an IP address automatically**.

1. Go into the **Control Panel** and double-click the **Network Connections** icon, and then right-click the **Local Area Connection** icon and then click **Properties**.



2. Click **Internet Protocol (TCP/IP)** and then click **Properties**. Click on **Obtain an IP automatically** and then click **OK**.

Q4: When I try to configure a remote device, an error message appears. What should I do?

A4: First, make sure you copy down the 12 digit device password. Second, enter the 12 digit device password in the utility. You need to enter dashes. For example: XXXX-XXXX-XXXX-XXXX.

Q5: I have a HomePlug 1.0 or HomePlug turbo network. Can I use this with my network?

A5: The TPL-302E is not backwards compatible with HomePlug 1.0 or HomePlug turbo.

If you still encounter problems or have any questions regarding the TPL-302E, please refer to the User's Guide included on the Utility CD-ROM or contact TRENDnet's Technical Support Department.

Limited Warranty

TRENDnet warrants its products against defects in material and workmanship, under normal use and service, for the following lengths of time from the date of purchase.

TPL-302E - 3-Year Warranty

If a product does not operate as warranted above during the applicable warranty period, TRENDnet shall, at its option and expense, repair the defective product or deliver to customer an equivalent product to replace the defective item. All products that are replaced will become the property of TRENDnet. Replacement products may be new or reconditioned.

TRENDnet shall not be responsible for any software, firmware, information, or memory data of customer contained in, stored on, or integrated with any products returned to TRENDnet pursuant to any warranty.

There are no user serviceable parts inside the product. Do not remove or attempt to service the product through any unauthorized service center. This warranty is voided if (i) the product has been modified or repaired by any unauthorized service center, (ii) the product was subject to accident, abuse, or improper use (iii) the product was subject to conditions more severe than those specified in the manual.

Warranty service may be obtained by contacting TRENDnet office within the applicable warranty period for a Return Material Authorization (RMA) number, accompanied by a copy of the dated proof of the purchase. Products returned to TRENDnet must be pre-authorized by TRENDnet with RMA number marked on the outside of the package, and

WARRANTIES EXCLUSIVE: IF THE TRENDNET PRODUCT DOES NOT OPERATE AS WARRANTED ABOVE, THE CUSTOMER'S SOLE REMEDY SHALL BE, AT TRENDNET'S OPTION, REPAIR OR REPLACEMENT. THE FOREGOING WARRANTIES AND REMEDIES ARE EXCLUSIVE AND ARE IN LIEU OF ALL OTHER WARRANTIES, EXPRESSED OR IMPLIED, EITHER IN FACT OR BY OPERATION OF LAW, STATUTORY OR OTHERWISE, INCLUDING WARRANTIES OF MERCHANTABILITY AND FITNESS FOR A PARTICULAR PURPOSE. TRENDNET NEITHER ASSUMES NOR AUTHORIZES ANY OTHER PERSON TO ASSUME FOR IT ANY OTHER LIABILITY IN CONNECTION WITH THE SALE, INSTALLATION, MAINTENANCE OR USE OF TRENDNET'S PRODUCTS.

TRENDNET SHALL NOT BE LIABLE UNDER THIS WARRANTY IF ITS TESTING AND EXAMINATION DISCLOSE THAT THE ALLEGED DEFECT IN THE PRODUCT DOES NOT EXIST OR WAS CAUSED BY CUSTOMER'S OR ANY THIRD PERSON'S MISUSE, NEGLIGENCE, IMPROPER INSTALLATION OR TESTING, UNAUTHORIZED ATTEMPTS TO REPAIR OR MODIFY, OR ANY OTHER CAUSE BEYOND THE RANGE OF THE INTENDED USE, OR BY ACCIDENT, FIRE, LIGHTNING, OR OTHER HAZARD.

LIMITATION OF LIABILITY: TO THE FULL EXTENT ALLOWED BY LAW TRENDNET ALSO EXCLUDES FOR ITSELF AND ITS SUPPLIERS ANY LIABILITY, WHETHER BASED IN CONTRACT OR TORT (INCLUDING NEGLIGENCE), FOR INCIDENTAL, CONSEQUENTIAL, INDIRECT, SPECIAL, OR PUNITIVE DAMAGES OF ANY KIND, OR FOR LOSS OF REVENUE OR PROFITS, LOSS OF BUSINESS, LOSS OF INFORMATION OR DATA, OR OTHER FINANCIAL LOSS ARISING OUT OF OR IN CONNECTION WITH THE SALE, INSTALLATION, MAINTENANCE, USE, PERFORMANCE, FAILURE, OR INTERRUPTION OF THE POSSIBILITY OF SUCH DAMAGES, AND LIMITS ITS LIABILITY TO REPAIR, REPLACEMENT, OR REFUND OF THE PURCHASE PRICE PAID, AT TRENDNET'S OPTION. THIS DISCLAIMER OF LIABILITY FOR DAMAGES WILL NOT BE AFFECTED IF ANY REMEDY PROVIDED HEREIN SHALL FAIL OF ITS ESSENTIAL PURPOSE.

Governing Law: This Limited Warranty shall be governed by the laws of the state of California.

Note: AC/DC Power Adapter, Cooling Fan, Power Supply, and Cables carry a 1-Year

Certifications

This equipment has been tested and found to comply with FCC and CE Rules.

Operation is subject to the following two conditions:

- (1) This device may not cause harmful interference.
- (2) This device must accept any interference received. Including interference that may cause undesired operation.



Waste electrical and electronic products must not be disposed of with household waste. Please recycle where facilities exist. Check with your Local Authority or Retailer for recycling advice.



NOTE: THE MANUFACTURER IS NOT RESPONSIBLE FOR ANY RADIO OR TV INTERFERENCE CAUSED BY UNAUTHORIZED MODIFICATIONS TO THIS EQUIPMENT. SUCH MODIFICATIONS COULD VOID THE USER'S AUTHORITY TO OPERATE THE EQUIPMENT.

ADVERTENCIA

En todos nuestros equipos se mencionan claramente las características del adaptador de alimentación necesario para su funcionamiento. El uso de un adaptador distinto al mencionado puede producir daños físicos y/o daños al equipo conectado. El adaptador de alimentación debe operar con voltaje y frecuencia de la energía eléctrica domiciliar existente en el país o zona de instalación.



Customer Support

Visit www.trendnet.com/support

Email:

support@trendnet.com



Europe (Germany • France • Italy • Spain • Switzerland • UK)

Toll Free Telephone: +00800 60 76 76 67

English/Espanol - 24/7

Worldwide

Telephone: +[31] (0) 20 504 05 35

English/Espanol - 24/7

Product Warranty Registration

Please take a moment to register your product online.

Go to TRENDnet's website at <http://www.trendnet.com/register>

TRENDnet

20675 Manhattan Place
Torrance, CA 90501
USA