



Quick Installation Guide



TPL-302E

Table of Contents

Français	1
1. Avant de commencer	1
2. Procéder à l'installation	2
Troubleshooting	5

1. Avant de commencer



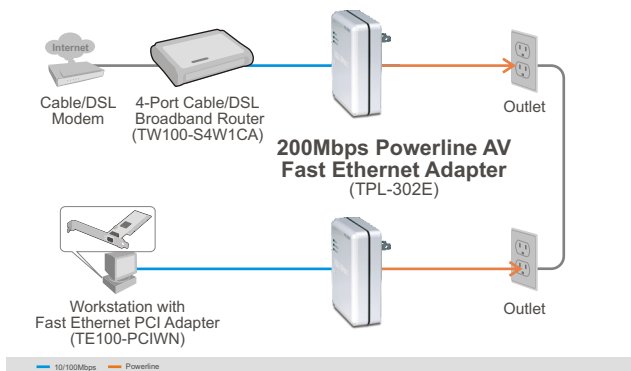
Contenu de l'emballage

- TPL-302E
- CD-ROM d'utilités
- Guide d'installation rapide

Configuration du système

- Lecteur de CD-ROM
- Un ordinateur de bureau ou un laptop avec un adaptateur réseau installé
- Microprocesseur : 300 MHz ou supérieur / 800MHz ou supérieur (Windows Vista)
- Mémoire : 256MB ou supérieur / 512MB RAM ou supérieur (Windows Vista)
- Réseau Powerline AV existant
- Réseau câblé 10/100Mbps lorsque le TPL-302E est utilisé comme pont

Application



2. Procéder à l'installation

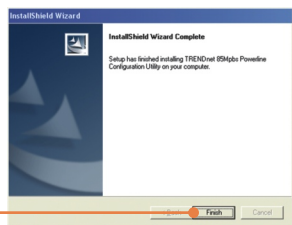
Important ! NE PAS installer le TPL-302E avant d'en avoir reçu la consigne.

Utilisateurs Windows

1. Insérez le **CD-ROM** dans le lecteur de CD-ROM de votre ordinateur et cliquez sur **Install Utility** (Installer le matériel).



2. Suivez les instructions de l'**assistant d'installation** et cliquez sur **Finish** (Terminer).



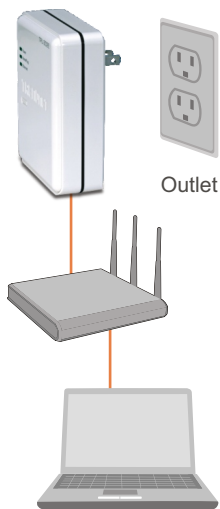
3. À l'arrière du périphérique, recopiez le mot de passe à 12 chiffres.



Remarque :

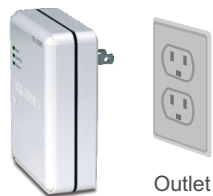
1. NE BRANCHEZ PAS le TPL-302E sur un cordon multiprise ou un régulateur de tension.
2. Afin que le TPL-302E procède à la reconnaissance, chaque périphérique doit se trouver sur le même coupe-circuit.
3. Un maximum de 16 TPL-302E peut être installé en réseau.

4. Raccordez le TPL-302E à une prise de courant disponible.



5. Branchez un câble CAT-5 entre le TPL-302E et votre routeur (p. ex. TEW-633GR). Branchez ensuite un câble CAT-5 entre votre routeur et votre ordinateur.

6. Branchez un deuxième TPL-302E dans une prise où votre PC, point d'accès sans fil ou autre périphérique distant avec un port Ethernet intégré se trouve.



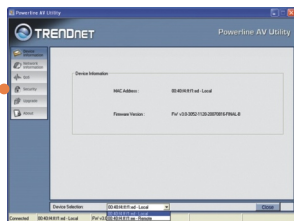
Remarque: Le nom par défaut du réseau est TRENDnet. Si le nom de votre réseau Powerline existant N'EST PAS TRENDnet, vous devez changer celui-ci dans l'installation.

7. Double-cliquez sur **TRENDnet Powerline AV Utility** sur votre bureau.

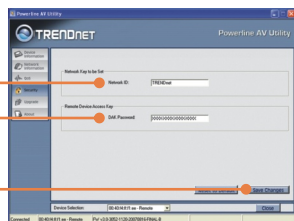


8. Sélectionnez Périphérique **local** ou **distant**, cliquez ensuite sur **Sécurité**.

Remarque: Configurez tout d'abord le périphérique **distant**.

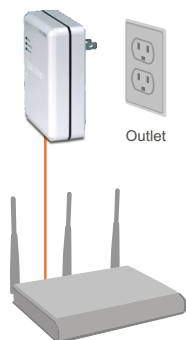


9. Si vous désirez changer l'**ID réseau**, indiquez l'**ID** désiré. Si vous configurez un périphérique distant, vous devez indiquer le mot de passe du périphérique (voir étape 3). Cliquez ensuite sur **Enregistrer les modifications**.



10. Répétez les étapes 8 et 9 pour le deuxième TPL-302E.

11. Branchez un câble CAT-5 entre le TPL-302E et le PC, le point d'accès sans fil (p. ex. le TEW-630APB) ou un autre périphérique distant avec un port Ethernet intégré.



La configuration Powerline est à présent terminée.

Si vous désirez des informations détaillées sur la configuration et les paramètres avancés du TPL-302E, veuillez consulter le Guide de l'utilisateur fourni sur le CD-ROM ou le site Internet de TRENDnet sur www.trendnet.com.

Q1: I inserted the TPL-302E CD-ROM into my computer's CD-ROM Drive and the installation menu does not appear automatically. What should I do?

A1: If the installation menu does not appear automatically, click Start, click Run, and type D:\Autorun.exe where "D" in "D:\Autorun.exe" is the letter assigned to your computer's CD-ROM Drive. And then click OK to start the installation.

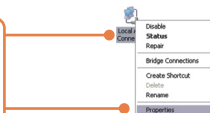
Q2: I have verified that my Powerline device is connected to my workstation, but I cannot detect other Powerline devices. What should I do?

A2: First, verify that you are using Cat-5e Ethernet cables. Second, open up the Powerline AV Utility and click scan. Third, verify the network name of your Powerline network. Then click on the security link in the TRENDnet Powerline Utility, type in the network name and click **Save changes**. Fourth, verify that the power outlet the TPL-302E is plugged into is on the same electrical power distribution and/or circuit breaker.

Q3: I can detect my Powerline devices on my Powerline network, but I cannot connect to the Internet. What should I do?

A3: First, make sure you are not connecting the device into a power strip or surge protector. Second, make sure that your Router is connected to the internet. Third, verify that the TCP/IP settings are set to **Obtain an IP address automatically**.

1. Go into the **Control Panel** and double-click the **Network Connections** icon, and then right-click the **Local Area Connection** icon and then click **Properties**.



Obtain an IP address automatically

Use the following IP address:

IP address:

Subnet mask:

Default gateway:

2. Click **Internet Protocol (TCP/IP)** and then click **Properties**. Click on **Obtain an IP automatically** and then click **OK**.

Q4: When I try to configure a remote device, an error message appears. What should I do?

A4: First, make sure you copy down the 12 digit device password. Second, enter the 12 digit device password in the utility. You need to enter dashes. For example: XXXX-XXXX-XXXX-XXXX.

Q5: I have a HomePlug 1.0 or HomePlug turbo network. Can I use this with my network?

A5: The TPL-302E is not backwards compatible with HomePlug 1.0 or HomePlug turbo.

If you still encounter problems or have any questions regarding the TPL-302E, please refer to the User's Guide included on the Utility CD-ROM or contact TRENDnet's Technical Support Department.

Limited Warranty

TRENDnet warrants its products against defects in material and workmanship, under normal use and service, for the following lengths of time from the date of purchase.

TPL-302E - 3-Year Limited Warranty

If a product does not operate as warranted above during the applicable warranty period, TRENDnet shall, at its option and expense, repair the defective product or deliver to customer an equivalent product to replace the defective item. All products that are replaced will become the property of TRENDnet. Replacement products may be new or reconditioned.

TRENDnet shall not be responsible for any software, firmware, information, or memory data of customer contained in, stored on, or integrated with any products returned to TRENDnet pursuant to any warranty.

There are no user serviceable parts inside the product. Do not remove or attempt to service the product through any unauthorized service center. This warranty is voided if (i) the product has been modified or repaired by any unauthorized service center, (ii) the product was subject to accident, abuse, or improper use (iii) the product was subject to conditions more severe than those specified in the manual.

Warranty service may be obtained by contacting TRENDnet office within the applicable warranty period for a Return Material Authorization (RMA) number, accompanied by a copy of the dated proof of the purchase. Products returned to TRENDnet must be pre-authorized by TRENDnet with RMA number marked on the outside of the package, and sent prepaid, insured and packaged appropriately for safe shipment.

WARRANTIES EXCLUSIVE: IF THE TRENDNET PRODUCT DOES NOT OPERATE AS WARRANTED ABOVE, THE CUSTOMER'S SOLE REMEDY SHALL BE, AT TRENDNET'S OPTION, REPAIR OR REPLACEMENT. THE FOREGOING WARRANTIES AND REMEDIES ARE EXCLUSIVE AND ARE IN LIEU OF ALL OTHER WARRANTIES, EXPRESSED OR IMPLIED, EITHER IN FACT OR BY OPERATION OF LAW, STATUTORY OR OTHERWISE, INCLUDING WARRANTIES OF MERCHANTABILITY AND FITNESS FOR A PARTICULAR PURPOSE. TRENDNET NEITHER ASSUMES NOR AUTHORIZES ANY OTHER PERSON TO ASSUME FOR IT ANY OTHER LIABILITY IN CONNECTION WITH THE SALE, INSTALLATION, MAINTENANCE OR USE OF TRENDNET'S PRODUCTS.

TRENDNET SHALL NOT BE LIABLE UNDER THIS WARRANTY IF ITS TESTING AND EXAMINATION DISCLOSE THAT THE ALLEGED DEFECT IN THE PRODUCT DOES NOT EXIST OR WAS CAUSED BY CUSTOMER'S OR ANY THIRD PERSON'S MISUSE, NEGLIGENCE, IMPROPER INSTALLATION OR TESTING, UNAUTHORIZED ATTEMPTS TO REPAIR OR MODIFY, OR ANY OTHER CAUSE BEYOND THE RANGE OF THE INTENDED USE, OR BY ACCIDENT, FIRE, LIGHTNING, OR OTHER HAZARD.

LIMITATION OF LIABILITY: TO THE FULL EXTENT ALLOWED BY LAW TRENDNET ALSO EXCLUDES FOR ITSELF AND ITS SUPPLIERS ANY LIABILITY, WHETHER BASED IN CONTRACT OR TORT (INCLUDING NEGLIGENCE), FOR INCIDENTAL, CONSEQUENTIAL, INDIRECT, SPECIAL, OR PUNITIVE DAMAGES OF ANY KIND, OR FOR LOSS OF REVENUE OR PROFITS, LOSS OF BUSINESS, LOSS OF INFORMATION OR DATA, OR OTHER FINANCIAL LOSS ARISING OUT OF OR IN CONNECTION WITH THE SALE, INSTALLATION, MAINTENANCE, USE, PERFORMANCE, FAILURE, OR INTERRUPTION OF THE POSSIBILITY OF SUCH DAMAGES, AND LIMITS ITS LIABILITY TO REPAIR, REPLACEMENT, OR REFUND OF THE PURCHASE PRICE PAID, AT TRENDNET'S OPTION. THIS DISCLAIMER OF LIABILITY FOR DAMAGES WILL NOT BE AFFECTED IF ANY REMEDY PROVIDED HEREIN SHALL FAIL OF ITS ESSENTIAL PURPOSE.

Governing Law: This Limited Warranty shall be governed by the laws of the state of California.

Note: AC/DC Power Adapter, Cooling Fan, Power Supply, and Cables carry a 1-Year Warranty

Certifications

This equipment has been tested and found to comply with FCC and CE Rules. Operation is subject to the following two conditions:

- (1) This device may not cause harmful interference.
- (2) This device must accept any interference received. Including interference that may cause undesired operation.



Waste electrical and electronic products must not be disposed of with household waste. Please recycle where facilities exist. Check with you Local Authority or Retailer for recycling advice.



NOTE: THE MANUFACTURER IS NOT RESPONSIBLE FOR ANY RADIO OR TV INTERFERENCE CAUSED BY UNAUTHORIZED MODIFICATIONS TO THIS EQUIPMENT. SUCH MODIFICATIONS COULD VOID THE USER'S AUTHORITY TO OPERATE THE EQUIPMENT.

ADVERTENCIA

En todos nuestros equipos se mencionan claramente las características del adaptador de alimentación necesario para su funcionamiento. El uso de un adaptador distinto al mencionado puede producir daños físicos y/o daños al equipo conectado. El adaptador de alimentación debe operar con voltaje y frecuencia de la energía eléctrica domiciliar existente en el país o zona de instalación.



Product Warranty Registration

Please take a moment to register your product online.
Go to TRENDnet's website at <http://www.trendnet.com/register>

TRENDnet[®]
20675 Manhattan Place
Torrance, CA 90501
USA