

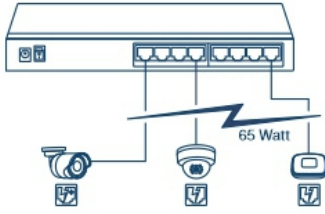


8-Port Gigabit PoE+ Switch

TPE-TG83 (v1.0R)

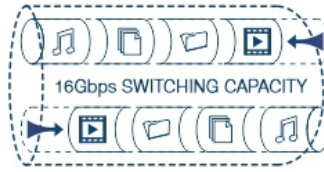
- 8 x Gigabit PoE+ ports
- 65W PoE power budget
- 16Gbps switching capacity
- IEEE 802.1p QoS and DSCP pass-through support
- Compact fanless design
- Wall-mountable metal housing

TRENDnet's 8-Port Gigabit PoE+ Switch, model TPE-TG83, reduces equipment and installation costs by delivering data and power over existing Ethernet cables. With PoE technology, users only need one set of cables to deliver both data and power. This compact network switch provides eight gigabit PoE+ ports with a total PoE power budget of 65W. The TPE-TG83 PoE+ switch allows you to network PoE devices, such as wireless access points, IP cameras, VoIP phones, IP video encoders, access controls, and more. It features a fanless design, and has a convenient option for wall mounting.



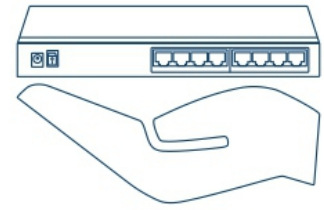
PoE+

A 65W PoE power budget supports up to eight Power over Ethernet devices.



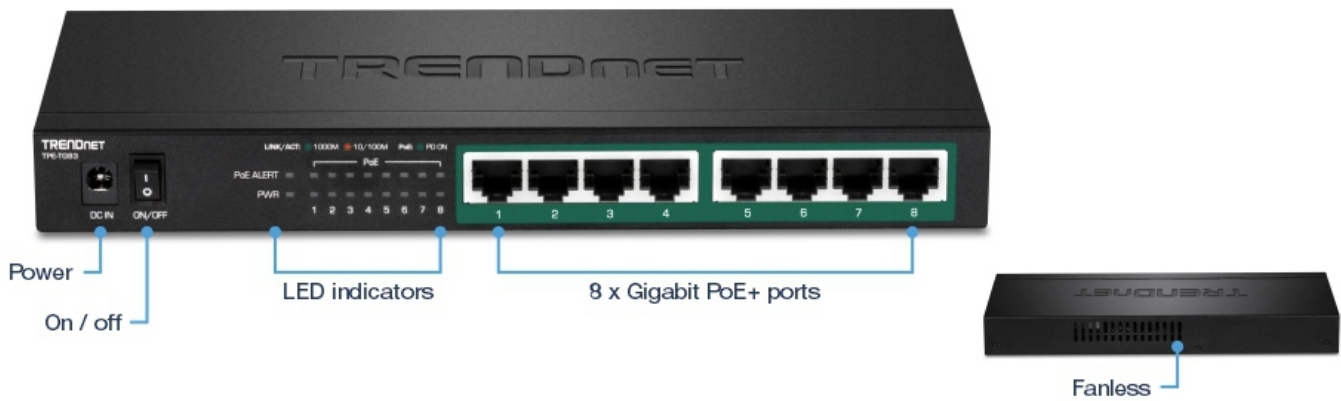
Gigabit Ports

Eight gigabit PoE+ ports provide a 16Gbps switching capacity to support edge network installations.



Compact Design

Compact, lightweight, and fanless, this switch is designed for desktops and quiet environments.



FEATURES



PoE+

Supplies up to 30 watts of PoE power per port with a 65W power budget



Gigabit Ports

8 x Gigabit PoE+ Ethernet ports



Compact Design

With a compact and lightweight metal housing design, this switch is well-suited for desktop installations



Switching Capacity

16Gbps switching capacity



Jumbo Frame

Sends Jumbo Frames (up to 9KB) for increased performance



Fanless

Fanless design is ideal for quiet environments that require silent operation



LED Indicators

LED indicators convey port status

SPECIFICATIONS

Standards

- IEEE 802.3
- IEEE 802.3u
- IEEE 802.3ab
- IEEE 802.3x
- IEEE 802.3p
- IEEE 802.3af
- IEEE 802.3at

Device Interface

- 8 x Gigabit PoE+ ports
- LED indicators

Data Transfer Rate

- Ethernet: 10Mbps (half duplex), 20Mbps (full duplex)
- Fast Ethernet: 100Mbps (half duplex), 200Mbps (full duplex)
- Gigabit Ethernet: 2000Mbps (full duplex)

Performance

- Switch Fabric: 16Gbps
- RAM Buffer: 192KB
- MAC Address Table: 4K entries
- Jumbo Frames: 9KB
- Forwarding rate: 11.9Mpps (64-byte packet size)

Special Features

- 802.1p Class of Service (CoS)
- Wall mountable

Power

- Input: 100 – 240 V AC, 50/60Hz, 2.5A
- Output: 55V DC, 1.3A external power adapter
- Max. consumption: 71W

PoE

- PoE budget: 65W
- PoE Mode A: Pins 1,2 for power and pins 3,6 for power

Operating Temperature

- 0° – 40° C (32° – 104° F)

Operating Humidity

- Max. 90% non-condensing

Dimensions

- 240 x 105 x 27mm (9.45 x 4.13 x 1.1 in.)

Weight

- 580g (20.45 oz.)

Certifications

- CE
- FCC
- LVD

Warranty

- 3 year

Package Contents

- TPE-TG83
- Quick Installation Guide
- Power adapter (55V DC, 1.3A)