

TPE-S88 F.A.Q.

Q: What is the default IP address of the TPE-S88?

A: The default IP address is <http://192.168.0.1>

Q: What is the default password?

A: The default password is admin.

Q: How do I configure the switch through the web-based configuration?

A: Log into the switch by entering the default IP address into the browser. The default IP address is <http://192.168.0.1> and the password is admin.

Q: How do I reset my switch to factory defaults?

A: Locate the reset button on the back of the switch. Press and hold it in for approximately 15 seconds.

Q: Why doesn't my Cisco 7940G/7960G IP Phone power on when connected to my TPE-S88?

A: The Cisco 7940G and 7960G are pre-802.3af POE devices. They will not be able to get power from the POE switch.

The following link is provided for reference and may provide further information regarding the incompatibility between 802.3af compliant devices and Cisco phones.

This article is not provided by Cisco nor endorsed by TRENDnet: <http://www.voip-info.org/wiki-Cisco+POE>

Note: This may include other Cisco IP Phones that are not 802.3af compliant. For further information on your Cisco IP Phone, please contact Cisco.

Q: Why are my ping requests slower when using TRENDnet Web SMART Switches?

A: Since Web Smart switches are not as robust in features as fully managed switches they have a slower CPU. Therefore, depending on what processes the Web Smart switch is currently running, the ping response time will be varied and longer.

TPE-S88 F.A.Q.

Q: Which TRENDnet products support the 802.3af protocol?

A: Currently only the TEW-453APB.

Q: How can the TPE-102S be applied to home or business solutions?

A: Below are a couple of scenarios that make the TPE-102S an ideal solution.

- a. When a person uses an IP Camera as an outdoor security camera, the TPE-102S will supply your IP Camera with power and data.
 - b. When you want to place an IP Camera or Access Point in an office where power outlets are unavailable, the TPE-102S can supply power and data to these network devices.
-

Q: What TRENDnet products are compatible with the TPE-S88?

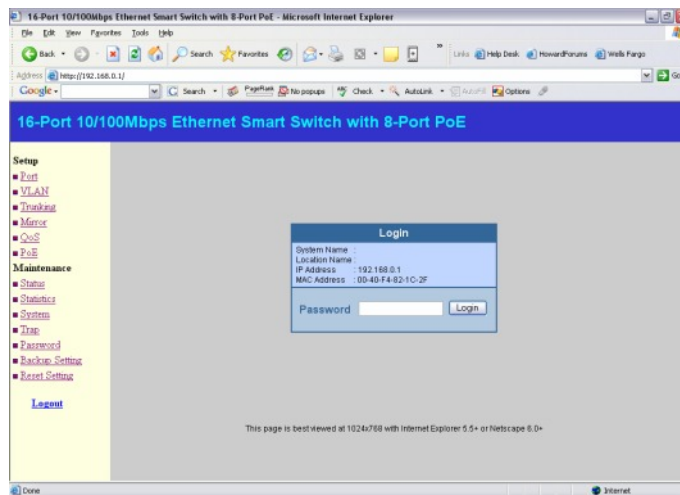
| | |
|---------------|----------------|
| A: TEG-S80TXE | Yes (5V 2.4A) |
| TEW-430APB | Yes (5V 2.1A) |
| TEW-432BRP | Yes (5V 2.5A) |
| TEW-450APB | Yes (5V, 2A) |
| TEW-510APB | Yes (5V, 2.5A) |
| TEW-511BRP | Yes (5V 2.5A) |
| TEW-610APB | Yes (5V, 2A) |
| TEW-611BRP | Yes (5V, 2A) |
| TE100-P1P | Yes (5V, 2.5A) |
| TE100-P1U | Yes (5V, 2.5A) |
| TE100-PS3plus | Yes (5V, 1.6A) |
| TE100-P21 | Yes (5V, 2.5A) |
| TEW-P1PG | Yes (5V 2.5A) |
| TEW-P1UG | Yes (5V 2.5A) |
| TEW-PS1U | Yes (5V 2.5A) |
| TEW-P21G | Yes (5V, 2.5A) |
| TV-IP100 | Yes (5V, 2.5A) |
| TV-IP100W | Yes (5V, 2.5A) |
| TV-IP200 | Yes (5V, 2.5A) |
| TV-IP200W | Yes (5V, 2.5A) |
| TV-IP400 | Yes (5V, 2.5A) |
| TV-IP400W | Yes (5V, 2.5A) |
| TS-U100 | Yes (5V, 2.5A) |
| TS-U200 | Yes (5V, 2.5A) |

TPE-S88 F.A.Q.

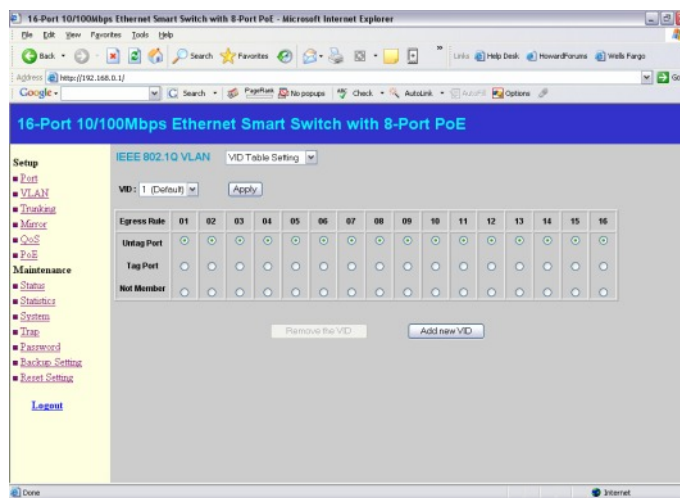
Q: How do I setup VLAN's on the TPE-S88?

A: In this example two VLAN's will be created. The VLAN's will not be able to access each other, but will be able to get out to a gateway. The gateway is connected to port 1.

Step 1. Open a web browser and log into the switch (192.168.0.1 by default). Enter the password (admin by default) then hit **Login**.

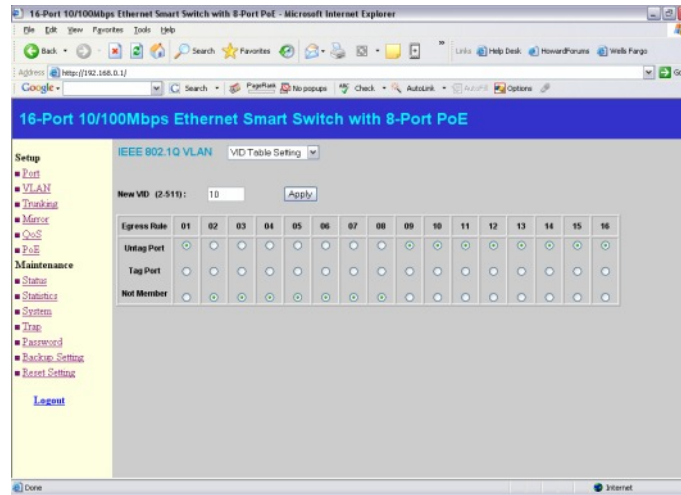


Step 2. Click on **VLAN** on the left hand side then click **Add new VID**.

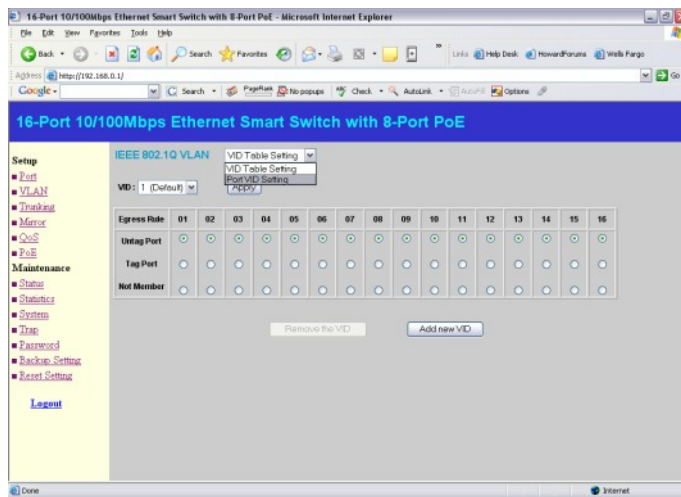


TPE-S88 F.A.Q.

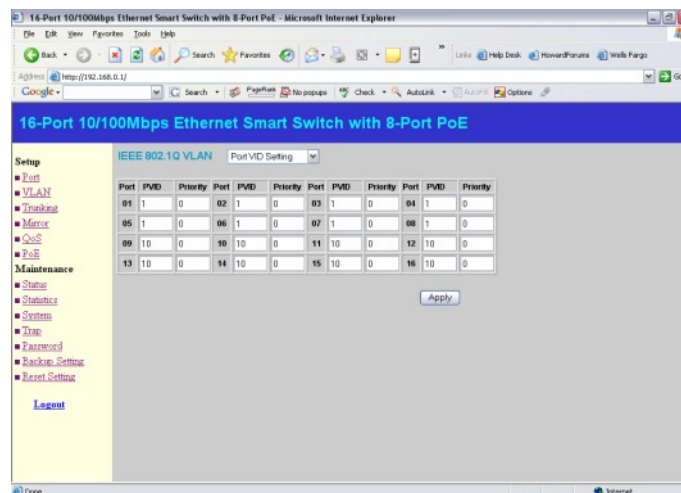
Step 3. Create a new VID and add Untagged Member Ports.



Step 4. Go back to the **VLAN** menu and select **Port VID Settings**.



Step 5. Change the PVID of the ports in the created VLAN and click **Apply**.



TPE-S88 F.A.Q.

Step 8. Change the PVID of the ports in the created VLAN and click **Apply**.

