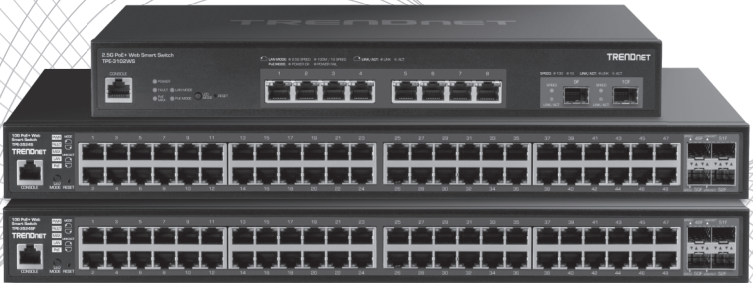


TRENDnet®



Quick Installation Guide

PoE Multi-Gig Web Smart Switch Series

Table of Contents

1 Italiano

1. Prima di cominciare
2. Riferimento rapido
3. Installazione e configurazione Hardware

<https://www.trendnet.com/qig/1055>



1. Prima di cominciare

Contenuto della Confezione

- Guida di Installazione Rapida
- Cavo di alimentazione (1,5 m / 5 piedi) (TPE-3102WS)
- Minuterie per montaggio a rack

Requisiti minimi

- Computer con porta Ethernet e Web browser
- Cavo di rete

Opzioni

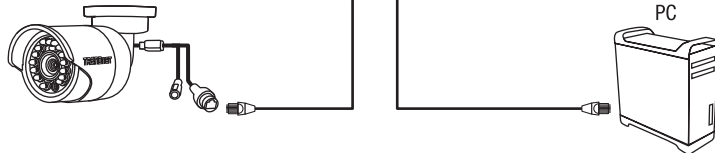
- Rack 19" EIA standard
- Moduli SFP (e.g. TE100-MGBFX, TEG-MGBSX, TEG-MGBS10, TEG-MGBS40, TEG-MGBS80, TEG-MGBS10D3, TEG-MGBS10D5, TEG-MGBS40D3, TEG-MGBS40D5)

2. Riferimento rapido

Telecamera IP PoE

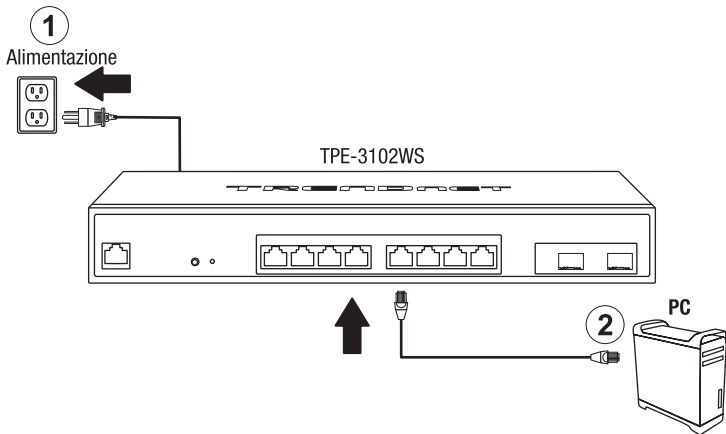


Telecamera IP PoE

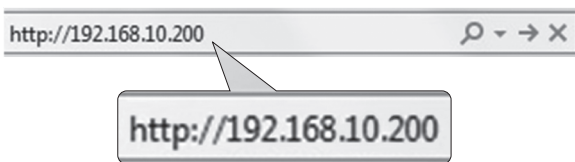


Nota: Il modello di switch (commutatore) potrebbe essere diverso da quello mostrato nell'esempio seguente.

3. Installazione e configurazione Hardware



3. Assignare un indirizzo IP statico alla scheda di rete del proprio computer nella sottorete 192.168.10.x (e.g. 192.168.10.25) con subnet mask 255.255.255.0.
4. Aprire il web browser, digitare l'indirizzo IP dello switch nella barra indirizzi e premere **Invio**. L'indirizzo IP di fabbrica è 192.168.10.200.

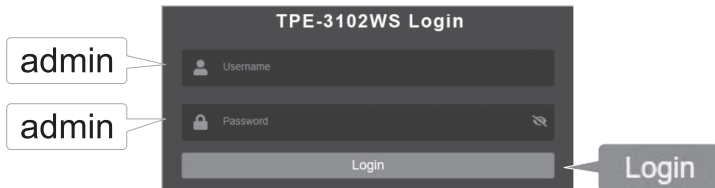


5. Inserire **User name** e **Password** e cliccare **Login**. Preimpostazioni:

User Name: **admin**

Password: **admin**

Nota: User name e Password sono sensibili alle maiuscole/minuscole.



6. Cliccare **System** e poi cliccare **IP Settings** (Impostazione IP).

7. Configurare lo switch secondo i requisiti richiesti dalla propria rete e poi cliccare **Apply**.



Per scaricare la versione più recente della guida utente, andare su:

<https://www.trendnet.com/support> e selezionare il **Switch Model II** interno dell'elenco a discesa Download Prodotto.

TRENDNET[®]

Certifications

This device complies with Part 15 of the FCC Rules.

Operation is subject to the following two conditions:

- (1) This device may not cause harmful interference.
- (2) This device must accept any interference received.

Including interference that may cause undesired operation.



Waste electrical and electronic products must not be disposed of with household waste. Please recycle where facilities exist. Check with your Local Authority or Retailer for recycling advice.

Fiber product warning note:

If the Optical Transceiver doesn't ship with the unit, the user manual shall have the description as below or equivalent:

"This product is intended to be used with a UL Listed Optical Transceiver product, Rated DC3.3V, Laser Class I."

Laser warning note:

This product is intended to be used with a UL Listed Optical Transceiver product, Rated DC3.3V, Laser Class I.

Technical Support

If you have any questions regarding the product installation, please contact our Technical Support.

Toll free US/Canada: **1-855-373-4741**

Regional phone numbers available at www.trendnet.com/support

TRENDnet

20675 Manhattan Place
Torrance, CA 90501
USA

Applies to PoE Products Only: This product is to be connected only to PoE networks without routing to the outside plant.

Note

The Manufacturer is not responsible for any radio or TV interference caused by unauthorized modifications to this equipment. Such modifications could void the user's authority to operate the equipment.

Advertencia

En todos nuestros equipos se mencionan claramente las características del adaptador de alimentación necesario para su funcionamiento. El uso de un adaptador distinto al mencionado puede producir daños físicos y/o daños al equipo conectado. El adaptador de alimentación debe operar con voltaje y frecuencia de la energía eléctrica domiciliar existente en el país o zona de instalación.

Product Warranty Registration

Please take a moment to register your product online. Go to TRENDnet's website at: www.trendnet.com/register