



# TRENDnet



## Quick Installation Guide



**TK-200K**  
**TK-400K**

# Table of Contents

Français .....	1
1. Avant de commencer .....	1
2. Procéder à l'installation .....	2
3. Fonctionnement .....	4
Specifications .....	5
Troubleshooting .....	6

# 1. Avant de commencer



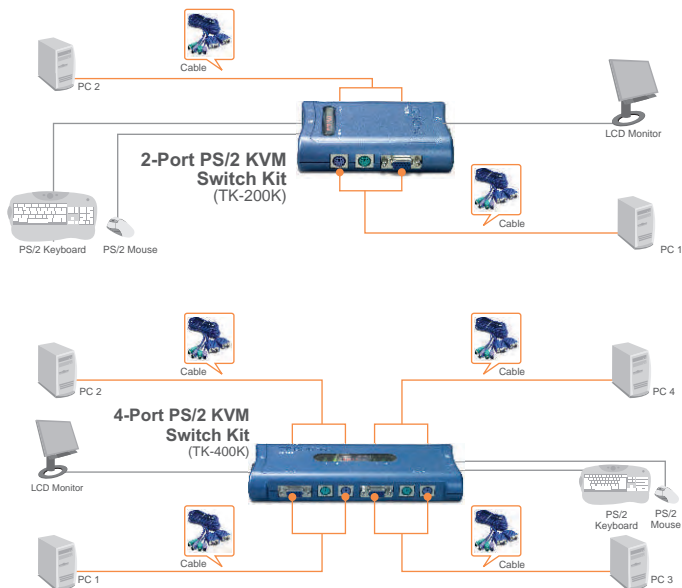
## Contenu de l'emballage

- TK-200/TK-400
- Guide d'installation rapide
- Câbles KVM

## Configuration du système

- Clavier PS/2
- Souris PS/2
- Moniteur compatible VGA
- Windows 98/ME/2000/XP(SP1/SP2)/Server 2003, Unix et Linux.

## Application



## 2. Procéder à l'installation

Remarque : TK-200/TK-400 ne nécessite aucun pilote ni logiciel.

1. Eteignez tous les ordinateurs et leurs périphériques et débranchez tous les cordons d'alimentation.

2. Utilisez les câbles KVM pour brancher chaque PC au switch KVM.

3. Branchez le clavier, le moniteur et la souris partagées au Port console du switch KVM.



**4.** Allumez un par un les ordinateurs connectés et attendez que le bureau de chaque PC apparaisse à l'écran.



## **L'installation est maintenant complète.**

Remarque : N'enfoncez pas les bouton de commande du switch KVM et n'utilisez pas de commande de raccourci pendant que les ordinateurs démarrent. Rendez-vous à la partie 3 « Fonctionnement ».

## 3. Fonctionnement

Remarque : Pour passer d'un ordinateur à l'autre, utilisez les boutons de contrôle situés sur le dessus ou les touches de raccourcis.

### 3.1 Bouton de contrôle

Enfoncez le bouton de contrôle pour passer d'un ordinateur à l'autre.

Bouton de contrôle (Illustration du TK-200)



### 3.2 Touches d'accès rapide

Un raccourci clavier consiste en une combinaison de trois touches :

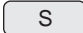
**Accès rapide = ScrLk + ScrLk + Touche(s)**

Après avoir appuyé sur la touche ScrLk, vous disposez de 2 secondes pour appuyer à nouveau sur cette dernière. Vous disposez alors de 2 secondes supplémentaires pour appuyer sur une touche de commande. Si vous n'enfoncez aucune touche dans les deux secondes, le mode « accès rapide » est annulé.

Voici les touches de raccourci:

ScrLk + ScrLk +  = Chaîne suivante

ScrLk + ScrLk +  = Chaîne précédente

ScrLk + ScrLk +  = Scan Automatique

En mode Touches de raccourci, utilisez la touche « flèche haut » pour choisir le port suivant, la touche « flèche bas » pour choisir le port précédent et la touche « S » pour mettre le Switch KVM en mode de recherche automatique (Auto Scan).

# Specifications

<b>Computer Connections:</b>	2 (TK-200) or 4 (TK-400)
<b>KVM Cable:</b>	TK-200K: 2 sets of 1.2 M (4 ft) High Grade KVM Cables TK-400K: 4 sets of 1.8 M (6 ft) High Grade KVM Cables
<b>Console Port Connectors: (All Female)</b>	1 x PS/2 keyboard 6-pin mini din 1 x PS/2 mouse 6-pin mini din 1 x VGA HDB15 (15-pin)
<b>PC Port Connectors: (All Female)</b>	<u>TK-200K:</u> 2 x PS/2 keyboard 6-pin mini din 2 x PS/2 mouse 6-pin mini din 2 x VGA HDB15 (15-pin) <u>TK-400K:</u> 4 x PS/2 keyboard 6-pin mini din 4 x PS/2 mouse 6-pin mini din 4 x VGA HDB15 (15-pin)
<b>VGA Resolution:</b>	1920 x 1440
<b>Port Selection:</b>	Push Button and Hot-Key Commands
<b>Auto-Scan Intervals:</b>	4 seconds
<b>Power Type:</b>	PS/2 Interface Power. Optional 9V DC, 500mA Adapter
<b>Dimensions:</b>	TK-200: 113 x 84 x 31 mm (4.45 x 3.31 x 1.22 inches) TK-400: 192 x 81 x 31 mm (7.5 x 3.19 x 1.22 inches)
<b>Weight:</b>	Approx. 155g. (5.5 oz.) (TK-200) Approx. 240g. (8.5 oz.) (TK-400)
<b>Operating Temperature:</b>	0°C ~ 40°C (32°F ~104°F)
<b>Storage Temperature:</b>	-20°C ~ 60°C (-4°F ~ 140°F)
<b>Humidity:</b>	0%~80%, Non-Condensing
<b>Certifications:</b>	FCC and CE

**Q1: Where is the AC adapter? I did not find one in the box.**

**A1:** The TK-200/TK-400 do not require an AC adapter. It draws power from the PS/2 connection of your computers. As long as you are connected to the PS/2 port, your KVM switch will function.

**Q2: I have the KVM switch connected properly, but my keyboard and mouse don't work.**

**A2:** Please make sure your PS/2 ports are working properly by testing it with another mouse or keyboard. Once you confirm that the PS/2 ports are functional, please reboot your computers, and try to use the KVM switch again.

**Q3: Can I connect or disconnect the KVM cables while the computers are turned on?**

**A3:** Yes, you can connect or disconnect the KVM cables while the computers are turned on, because the interface is Hot-Pluggable.

**Q4: Will the KVM switch restore the keyboard settings when switching between computers?**

**A4:** Yes, the KVM switch will restore the keyboard settings when switching between computers. (i.e.: Cap lock, Num key, etc.)

**Q5: How do I switch from one computer to another with the KVM switch?**

**A5:** You can switch PCs by pressing the push button on the KVM switch or by using the Hot-Key commands. Go to Section 3 Operation for more information.

If you still encounter problems or have any questions regarding the TK-200K/TK-400K, please contact Trendnet's Technical Support Department.

## Certifications

This equipment has been tested and found to comply with FCC and CE Rules.

Operation is subject to the following two conditions:

- (1) This device may not cause harmful interference.
- (2) This device must accept any interference received. Including interference that may cause undesired operation.



Waste electrical and electronic products must not be disposed of with household waste. Please recycle where facilities exist. Check with your Local Authority or Retailer for recycling advice.



**NOTE:** THE MANUFACTURER IS NOT RESPONSIBLE FOR ANY RADIO OR TV INTERFERENCE CAUSED BY UNAUTHORIZED MODIFICATIONS TO THIS EQUIPMENT. SUCH MODIFICATIONS COULD VOID THE USER'S AUTHORITY TO OPERATE THE EQUIPMENT.



## Limited Warranty

TRENDnet warrants its products against defects in material and workmanship, under normal use and service, for the following lengths of time from the date of purchase.

### TK-200K/TK-400K - 2 Year Warranty

If a product does not operate as warranted above during the applicable warranty period, TRENDnet shall, at its option and expense, repair the defective product or part, deliver to customer an equivalent product or part to replace the defective item, or refund to customer the purchase price paid for the defective product. All products that are replaced will become the property of TRENDnet. Replacement products may be new or reconditioned.

TRENDnet shall not be responsible for any software, firmware, information, or memory data of customer contained in, stored on, or integrated with any products returned to TRENDnet pursuant to any warranty.

There are no user serviceable parts inside the product. Do not remove or attempt to service the product by any unauthorized service center. This warranty is voided if (i) the product has been modified or repaired by any unauthorized service center, (ii) the product was subject to accident, abuse, or improper use (iii) the product was subject to conditions more severe than those specified in the manual.

Warranty service may be obtained by contacting TRENDnet office within the applicable warranty period for a Return Material Authorization (RMA) number, accompanied by a copy of the dated proof of the purchase. Products returned to TRENDnet must be pre-authorized by TRENDnet with RMA number marked on the outside of the package, and sent prepaid, insured and packaged appropriately for safe shipment.

WARRANTIES EXCLUSIVE: IF THE TRENDnet PRODUCT DOES NOT OPERATE AS WARRANTED ABOVE, THE CUSTOMER'S SOLE REMEDY SHALL BE, AT TRENDnet'S OPTION, REPAIR OR REPLACEMENT. THE FOREGOING WARRANTIES AND REMEDIES ARE EXCLUSIVE AND ARE IN LIEU OF ALL OTHER WARRANTIES, EXPRESSED OR IMPLIED, EITHER IN FACT OR BY OPERATION OF LAW, STATUTORY OR OTHERWISE, INCLUDING WARRANTIES OF MERCHANTABILITY AND FITNESS FOR A PARTICULAR PURPOSE. TRENDnet NEITHER ASSUMES NOR AUTHORIZES ANY OTHER PERSON TO ASSUME FOR IT ANY OTHER LIABILITY IN CONNECTION WITH THE SALE, INSTALLATION MAINTENANCE OR USE OF TRENDnet'S PRODUCTS.

TRENDnet SHALL NOT BE LIABLE UNDER THIS WARRANTY IF ITS TESTING AND EXAMINATION DISCLOSE THAT THE ALLEGED DEFECT IN THE PRODUCT DOES NOT EXIST OR WAS CAUSED BY CUSTOMER'S OR ANY THIRD PERSON'S MISUSE, NEGLIGENCE, IMPROPER INSTALLATION OR TESTING, UNAUTHORIZED ATTEMPTS TO REPAIR OR MODIFY, OR ANY OTHER CAUSE BEYOND THE RANGE OF THE INTENDED USE, OR BY ACCIDENT, FIRE, LIGHTNING, OR OTHER HAZARD.

LIMITATION OF LIABILITY: TO THE FULL EXTENT ALLOWED BY LAW TRENDnet ALSO EXCLUDES FOR ITSELF AND ITS SUPPLIERS ANY LIABILITY, WHETHER BASED IN CONTRACT OR TORT (INCLUDING NEGLIGENCE), FOR INCIDENTAL, CONSEQUENTIAL, INDIRECT, SPECIAL, OR PUNITIVE DAMAGES OF ANY KIND, OR FOR LOSS OF REVENUE OR PROFITS, LOSS OF BUSINESS, LOSS OF INFORMATION OR DATA, OR OTHER FINANCIAL LOSS ARISING OUT OF OR IN CONNECTION WITH THE SALE, INSTALLATION, MAINTENANCE, USE, PERFORMANCE, FAILURE, OR INTERRUPTION OF THE POSSIBILITY OF SUCH DAMAGES, AND LIMITS ITS LIABILITY TO REPAIR, REPLACEMENT, OR REFUND OF THE PURCHASE PRICE PAID, AT TRENDnet'S OPTION. THIS DISCLAIMER OF LIABILITY FOR DAMAGES WILL NOT BE AFFECTED IF ANY REMEDY PROVIDED HEREIN SHALL FAIL OF ITS ESSENTIAL PURPOSE.

Governing Law: This Limited Warranty shall be governed by the laws of the state of California.

AC/DC Power Adapter, Cooling Fan, and Power Supply carry 1 Year Warranty



# TRENDnet

## TRENDnet Technical Support

US/Canada Support Center

**Contact**

**Telephone:** 1(866) 845-3673

**Email:** support@trendnet.com

**Tech Support Hours**

24/7 Toll Free Tech Support



European Support Center

**Contact**

**Telephone:**

Deutsch : +49 (0) 6331 / 268-460

Français : +49 (0) 6331 / 268-461

0800-90-71-61 (numéro vert)

Español : +49 (0) 6331 / 268-462

English : +49 (0) 6331 / 268-463

Italiano : +49 (0) 6331 / 268-464

Dutch : +49 (0) 6331 / 268-465

**Fax:** +49 (0) 6331 / 268-466

**Tech Support Hours**

8:00am - 6:00pm

Middle European Time

Monday - Friday

## Product Warranty Registration

Please take a moment to register your product online.

Go to TRENDnet's website at <http://www.trendnet.com>

# TRENDnet

3135 Kashiwa Street

Torrance, CA 90505

USA