



## Industrial 2.5G PoE++ Injector

TI-IG219 (v1.xR)

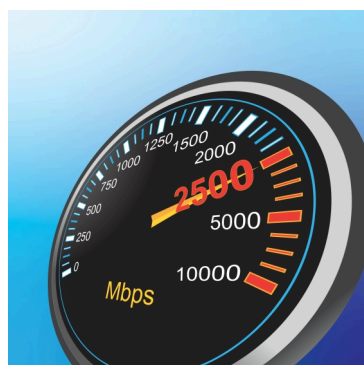
- 1 x 2.5G PoE++ port (Data + PoE out)
- 1 x 2.5G port (Data in)
- 95W PoE power budget
- Supports PoE (15.4W), PoE+ (30W), and PoE++ (95W) devices
- Uses IEEE 802.3af, IEEE 802.3at, and IEEE 802.3bt industry PoE standards for greater device interoperability
- Network a PoE device located up to 100m (328 ft.) away
- Fanless design eliminates operating noise and lowers energy consumption
- Extreme operating temperature range - 40° — 75° C (-40° — 167° F)
- Redundant power inputs with overload current protection
- Includes DIN-Rail mount and wall mount
- Power supply sold separately (model: TI-S15052)
- NDAA / TAA compliant (U.S. only)

TRENDnet's Industrial 2.5G PoE++ Injector, model TI-IG219, allows users to add PoE++ power to a non-PoE 2.5G switch. Connect the 2.5G PoE++ injector to a non-PoE switch, and then run an Ethernet cable up to 100 meters (328 ft.) to network a PoE, PoE+, or PoE++ device. This multi-gig industrial PoE++ injector supplies up to 95W of power to a PoE device. The fanless design conveniently eliminates operating noise and lowers energy consumption. The 2.5G PoE++ injector is equipped with an IP50-rated metal enclosure, designed to withstand a high degree of vibration and shock, while operating within an extreme temperature range of -40° – 75° C (-40° – 167° F) for harsh industrial environments.



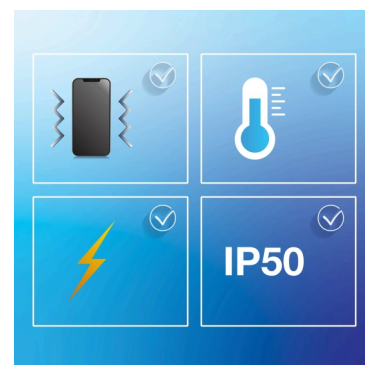
## PoE++

This multi-gig PoE++ injector supplies up to 95W of power to a PoE device.



## 2.5G Ports

Features a high-speed 2.5G port (data in) and a high-speed 2.5G PoE++ port (data + PoE out).



## Industrial Design

IP50-rated metal enclosure with a high degree of vibration and shock resistance, and an extreme operating temperature range of -40° – 75° C (-40° – 167° F).

## FEATURES



### PoE+ +

This industrial 802.3bt PoE injector supplies up to 95W of power to PoE (IEEE 802.3af), PoE+ (IEEE 802.3at), or PoE++ (IEEE 802.3bt) devices



### Industrial Design

Equipped with an IP50-rated metal enclosure, designed to withstand a high degree of vibration and shock, while operating within an extreme temperature range of -40° – 75° C (-40° – 167° F) for industrial environments



### 2.5G Ports

1 x 2.5G port (data in) and 1 x 2.5G PoE++ port (data + PoE out)



### PoE Distance

Provides a PoE network connection up to 100m (328 ft.) away



### LED Indicators

LED indicators on the industrial PoE injector convey power and PoE connectivity



### Shock and Vibration Resistant

Rated for shock (EN 60068-2-27), freefall (EN 60068-2-32), and vibration (EN 60068-2-6)



### Grounding Point

Grounding point protects equipment from external electrical surges



### Fanless Design

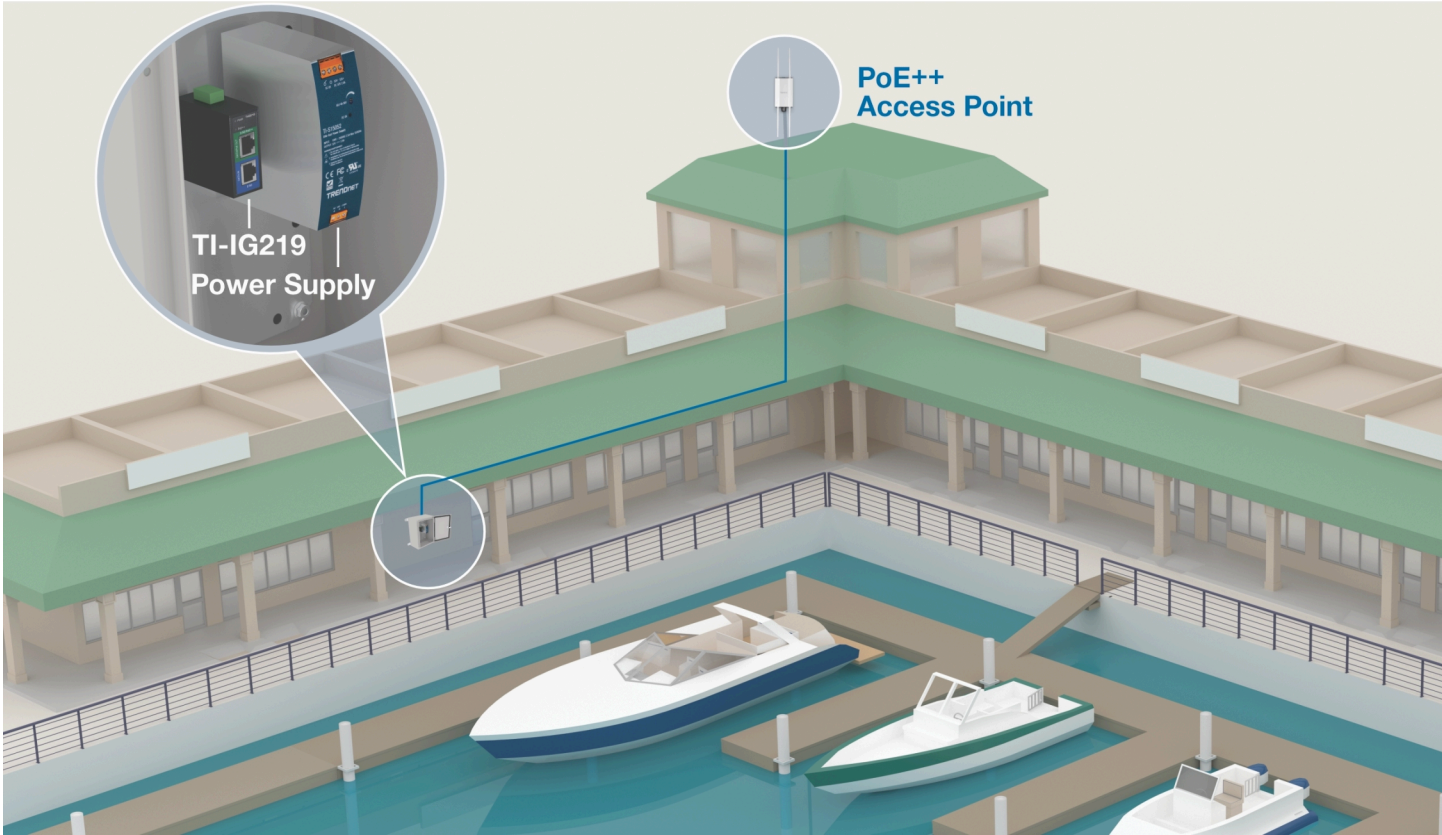
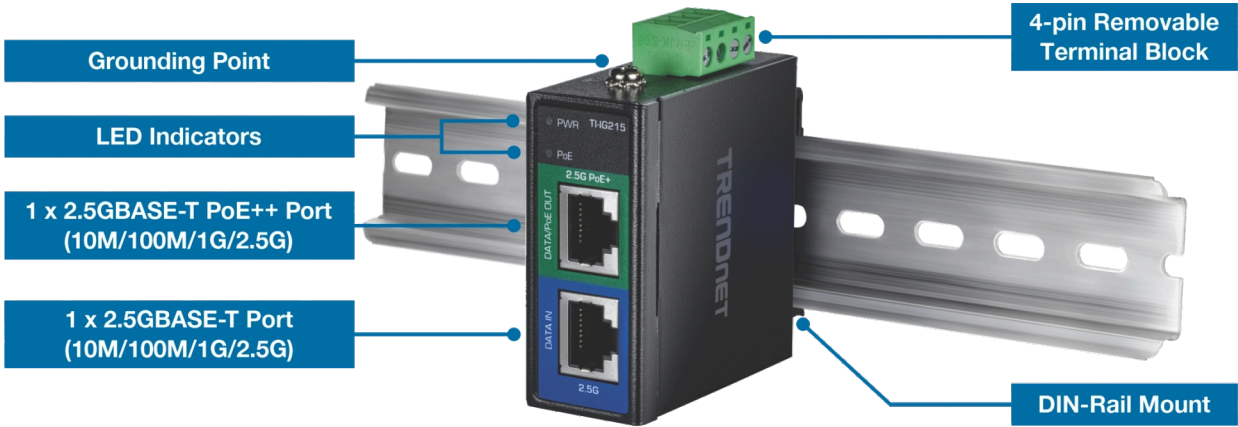
Fanless design on the injector conveniently eliminates operating noise and lowers energy consumption



### Housing Design

Compact and sturdy metal housing for installation flexibility

NETWORKING SOLUTION



## SPECIFICATIONS

### Standards

- IEEE 802.3
- IEEE 802.3u
- IEEE 802.3ab
- IEEE 802.3af
- IEEE 802.3at
- IEEE 802.3bt
- IEEE 802.3bz

### Device Interface

- 1 x 2.5GBASE-T port (10M/100M/1G/2.5G)
- 1 x 2.5GBASE-T PoE++ port (10M/100M/1G/2.5G)
- 4-pin removable terminal block
- LED indicators

### Power

- Input: 48 – 57V DC
- Compatible power supply: TI-S15052 (sold separately)
- Max. consumption: 2W @ 57V (with no PD connected)

### PoE

- PoE budget: 88 – 95W
- Pins 3, 4, 5, 6, for power + and pins 1, 2, 7, 8 for power -

### Terminal Block

- Redundant power inputs, 4 pin
- Wire range: 0.34mm<sup>2</sup> to 2.5mm<sup>2</sup>
- Solid wire (AWG): 14-22
- Stranded wire (AWG): 14-22
- Torque: 3.5 lb. – In / 0.3Nm / 0.39 Nm
- Wire strip length: 7-8mm

### MTBF

- 7,500,000 hours @ 25° C

### Housing

- IP50 metal case
- DIN-Rail mount
- Wall mount
- Grounding point
- Contact 6kV/Air 8kV ESD protection
- 6kV RJ45 surge protection

### Operating Temperature

- -40° — 75° C (-40° — 167° F)

### Operating Humidity

- Max. 95% non-condensing

### Dimensions (L x W x H)

- 60 x 58 x 26mm (2.36 x 2.28 x 1.02 in.)

### Weight

- 134g (4.72 oz.)

### Certifications

- CE
- FCC
- LVD
- Shock (IEC 60068-2-27)
- Freefall (IEC 60068-2-31)
- Vibration (IEC 60068-2-6)
- IEC 61000-4-2
- IEC 61000-4-4
- IEC 61000-4-5

### Warranty

- 3-year

### Package Contents

- TI-IG219
- Removable terminal block
- DIN-Rail and wall mount kit

All references to speed are for comparison purposes only. Product specifications, size, and shape are subject to change without notice, and actual product appearance may differ from that depicted herein.