

## 8-Port Hardened Industrial Gigabit DIN-Rail Switch

TI-G80 (v1.0R)

- 8 x Gigabit Ethernet ports
- 16 Gbps switching capacity
- Hardened IP30 rated metal switch
- Includes DIN-rail and wall mounts
- Extreme -40 to 75 °C (-40 to 167 °F) operating temperature range
- Dual redundant power inputs with overload current protection
- Alarm output triggered by power failure
- Power supply sold separately (model TI-M6024)
- Limited Lifetime Warranty

TRENDnet's TI-G80 is a reliable IP30 unmanaged DIN-rail switch with hardened components rated for extreme industrial environments. It offers 8 Gigabit ports and a 16 Gbps switching capacity. Dual redundant power inputs (power adapter sold separately: TI-M6024) and a power failure alarm output trigger support zero downtime applications.



## Network Ports

8 x Gigabit Ethernet ports



## DIN-Rail/Wall Mounts

IP30 rated metal enclosure with included DIN-rail and wall mount hardware



## Switching Capacity

16 Gbps switching capacity



## Redundant Power

Dual redundant power inputs with overload current protection (power supply sold separately: model TI-M6024)



## Alarm Output

Alarm output triggered by power failure of primary and/or redundant power



## Extreme Temperatures

Hardened switch is rated for an operating temperature range of -40 to 75 °C (-40 to 167 °F)



## Electro Magnetic Compliance

Complies with FCC Part 15 Subpart B Class A and CE EN 55022 Class A standards



## Certifications

Rated for information technology (ITE) equipment (EN55022/24)



## Shock and Vibration Resistant

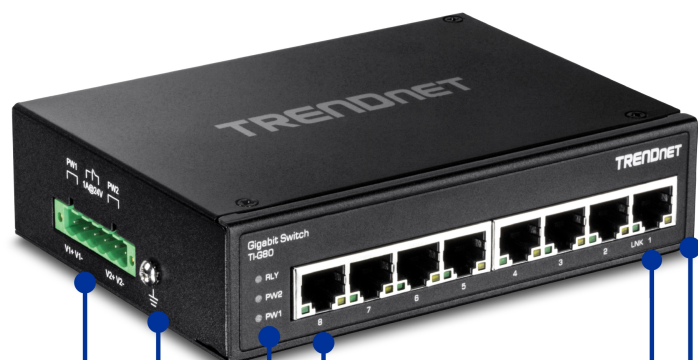
Rated for shock (IEC 60068-2-27), freefall (IEC 60068-2-32), and vibration (IEC 60068-2-6)



## Grounding Point

Grounding point protects equipment from external electrical surges

## Networking Solution



1

2

3

4

5

6

7

8

- 1 Terminal block slot
- 2 Grounding point
- 3 LED indicators
- 4 Gigabit Ethernet ports
- 5 IP30 rated metal housing
- 6 Terminal block
- 7 Wall mounting kit
- 8 DIN-rail mount

## Specifications

### Standards

- IEEE 802.3
- IEEE 802.3u
- IEEE 802.3ab
- IEEE 802.3x

### Device Interface

- 8 x Gigabit ports
- 6-pin removable terminal block
- LED indicators
- DIN-Rail mount
- Wall mount
- Grounding point

### Data Transfer Rate

- Ethernet: 10 Mbps (half duplex), 20 Mbps (full duplex)
- Fast Ethernet: 100 Mbps (half duplex), 200 Mbps (full duplex)
- Gigabit: 2000 Mbps (full duplex)

### Performance

- Data RAM Buffer: 128 KB
- Switching Fabric: 16 Gbps
- MAC Address Table: 8 K entries
- Forwarding rate: 11.9 Mpps (64-byte packet size)

### Special Features

- Hardened components rated for extreme temperatures
- Dual redundant power inputs

- Auto-Negotiation
- Auto store and forward architecture
- Automatic address learning and address aging
- ESD 8 kV and Surge 2 kV protection

### Power

- Input: 12 - 56 V DC
- Compatible power supply: TI-M6024 (sold separately)
- Consumption: Max. 5 Watts

### Terminal Block

- Redundant power inputs, alarm relay contact, 6 pin
- Wire range: 0.34 mm<sup>2</sup> to 2.5 mm<sup>2</sup>
- Solid wire (AWG): 12-24/14-22
- Stranded wire (AWG): 12-24/14-22
- Torque: 5 lb. – In / 0.5 Nm / 0.56 Nm
- Wire strip length: 7-8 mm

### Alarm Relay Contact

- Relay outputs with current carrying capacity of 1 A, 24 V DC
- Open circuit mode when two power sources are connected
- Short circuit mode when only one power source is connected

### MTBF

- 510,304 hours

### Housing

- IP30 metal case

- DIN-rail mount
- Wall mount
- Grounding point
- 8 kV ESD protection
- 2 kV surge protection

### Operating Temperature

- - 40 to 75 °C (-40 to 167 °F)

### Operating Humidity

- Max. 95 % non-condensing

### Dimensions

- 143 x 104 x 36 mm (5.6 x 4.1 x 1.4 in.)

### Weight

- 512 g (1.1 lb)

### Certifications

- CE
- FCC
- Shock (IEC 60068-2-27)
- Freefall (IEC 60068-2-32)
- Vibration (IEC 60068-2-6)

### Warranty

- Limited Lifetime Warranty

### Package Contents

- TI-G80
- Quick Installation Guide
- Removable terminal block
- DIN-rail / wall mount kit

TRENDnet offers a limited lifetime warranty for all of its metal-enclosed network switches that have been purchased in the United States/Canada on or after 1/1/2015. Cooling fan and internal power supply carry a one-year warranty.

