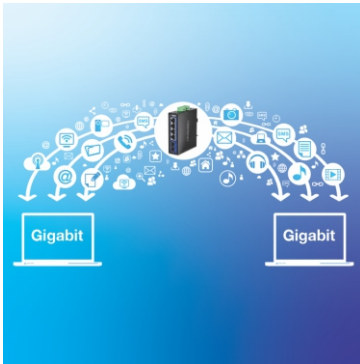


5-Port Industrial Gigabit DIN-Rail Switch with Multi-Mode SC Port

TI-G51SC (v1.xR)

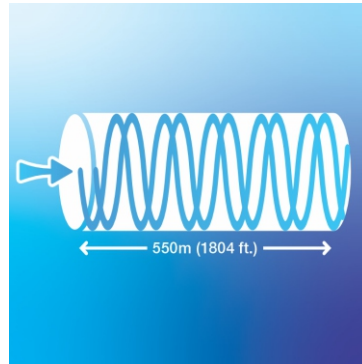
- 4 x Gigabit ports
- 1 x Gigabit Multi-Mode Fiber SC port
- Hardened IP30 rated metal switch
- Extreme -40° – 75° C (-40° – 167° F) operating temperature range
- Redundant power inputs with overload current protection
- Alarm output triggered by power failure
- 10Gbps switching capacity
- Includes DIN-Rail and wall mounts
- Power supply sold separately (models: TI-M6024, TI-S15052, 48VDC3000)
- Lifetime Warranty

TRENDnet's 5-Port Industrial Gigabit DIN-Rail Switch with Multi-Mode SC Port, model TI-G51SC, features a rugged IP30 rated metal enclosure and is designed to work in the harshest networking environments. This industrial switch with a fiber port is designed to withstand a high degree of vibration and shock, while operating in both high and low temperatures of industrial environments within -40° – 75° C (-40° – 167° F). Redundant power inputs with overload current protection on the industrial unmanaged switch minimizes network downtime. This hardened industrial switch features copper gigabit ports for high-speed device connections, and a gigabit multi-mode SC port for long-distance fiber networking applications up to 550 meters.



Gigabit Ports

This reliable industrial switch features high-performance gigabit RJ-45 ports for high-speed device connections.



SC Multi-Mode Fiber Port

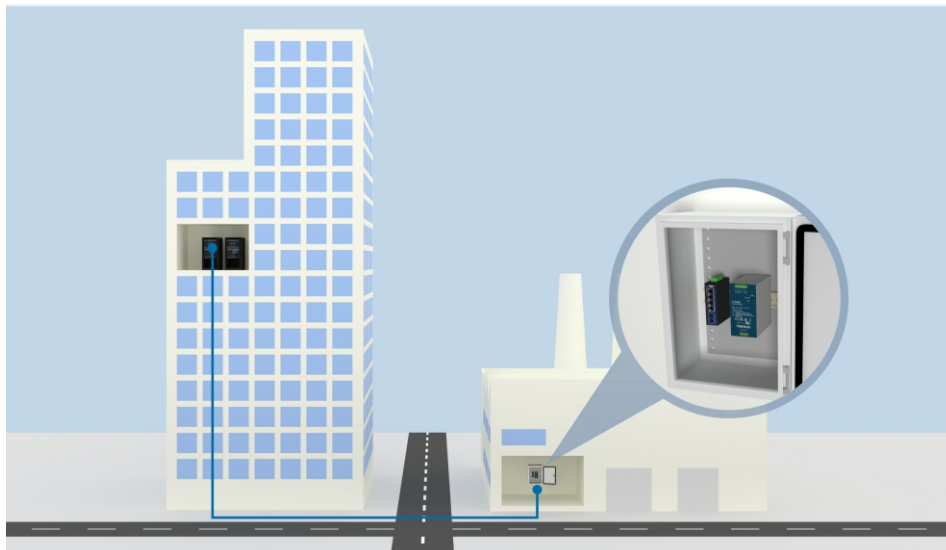
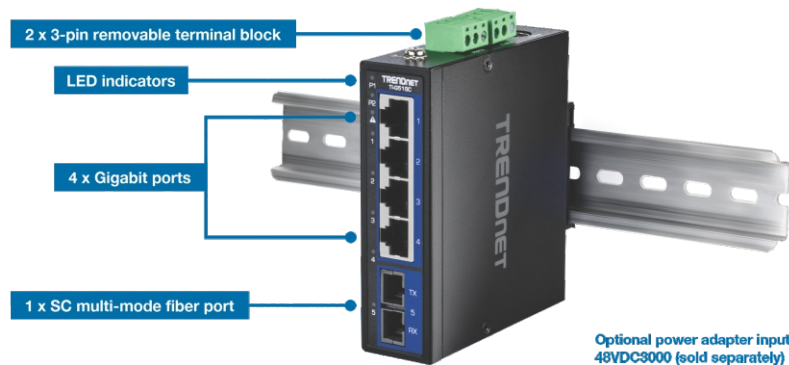
The SC multi-mode fiber port supports long-distance fiber networking applications up to 550 meters.



Industrial Hardened Design

Equipped with a rugged IP30 rated housing, designed to withstand a high degree of vibration and shock, and operate within an extreme temperature range of -40° – 75° C (-40° – 167° F).

NETWORKING SOLUTION



FEATURES



Gigabit Ports

Industrial switch with fiber port features gigabit RJ-45 ports for high-speed device connections, and a gigabit SC multi-mode fiber port that supports long-distance fiber networking applications up to 550 meters



DIN-Rail / Wall Mounts

The industrial switch with a fiber SC port features an IP30 rated metal enclosure, with included DIN-Rail mount and wall mount hardware



Redundant Power

Multiple power inputs provide redundant power with overload current protection (power supply sold separately, models: TI-M6024, TI-S15052)



Alarm Relay

Alarm relay on the industrial network switch with a fiber optic port is triggered by power failure of primary and/or redundant power



Jumbo Frame

Supports larger packets, or Jumbo Frames (up to 9KB), for increased performance



Extreme Temperature Range

Operating temperature range of -40° – 75° C (-40° – 167° F) allows for installations in environments with extreme hot or cold conditions



Shock and Vibration Resistant

Rated for shock (EN 60068-2-27), freefall (EN 60068-2-32), and vibration (EN 60068-2-6)



Electro Magnetic Compliance

Complies with industrial EMS certifications (IEC 61000-4-2) ESD:
 Contact: 6kV | Air: 8kV, (IEC 61000-4-4) EFT: Power: 2kV | Signal: 2kV, (IEC 61000-4-5)
 Surge: Power: 2kV | Signal: 6kV



Grounding Point

Grounding point for high-voltage protection



Switching Capacity

10Gbps switching capacity



LED Indicator

LED Indicators on the industrial switch with a fiber port convey port status

SPECIFICATIONS

Standards

- IEEE 802.3
- IEEE 802.3u
- IEEE 802.3x
- IEEE 802.3z (1000Base-SX)
- IEEE 802.3ab

Device Interface

- 4 x Gigabit ports
- 1 x SC multi-mode fiber port
- 2 x 3-pin removable terminal block
- LED indicators
- Optional power adapter input 48VDC3000 (sold separately)

Data Transfer Rate

- Ethernet: 10Mbps (half duplex), 20Mbps (full duplex)
- Fast Ethernet: 100Mbps (half duplex), 200Mbps (full duplex)
- Gigabit: 2Gbps (full duplex)
- Fiber: 2Gbps (full duplex)

Performance

- Data RAM Buffer: 48KB
- Switching Fabric: 10Gbps
- MAC Address Table: 2K entries
- Jumbo Frame: 9KB
- Forwarding Rate: 7.44Mpps (64-byte packet size)

Special Features

- Hardened components rated for extreme temperatures
- Dual power inputs
- Auto negotiation
- Auto store and forward architecture
- Automatic address learning and address aging
- ESD 6KV and Surge 2KV protection

Power

- Input: 9 - 60V DC
- Compatible power supply: TI-M6024, TIS15052 (sold separately)
- Max. consumption: 3.6W
- Power adapter 48VDC3000 (sold separately)

Terminal Block

- Redundant power inputs, alarm relay contact, 2 x 3 pin
- Wire range: 0.34mm² to 2.5mm²
- Solid wire (AWG): 12-24/14-22
- Stranded wire (AWG): 12-24/14-22
- Torque: 5 lb. – In / 0.5Nm / 0.56 Nm
- Wire strip length: 7-8mm

Alarm Relay Contact

- Relay outputs with current carrying capacity of 1A, 24V DC
- Short circuit mode when two power sources are connected
- Open circuit mode when only one power source is connected

MTBF

- 71,955 hours

Housing

- IP30 metal case
- DIN-Rail mount
- Wall mount
- Grounding point
- 8KV ESD protection
- 2KV surge protection

Operating Temperature

- - 40° – 75° C (-40° – 167° F)

Operating Humidity

- Max. 95% non-condensing

Dimensions

- 99 x 90 x 28mm (3.89 x 3.54 x 1.10 in.)

Weight

- 292g (0.64 lbs.)

Certifications

- CE
- FCC
- LVD
- Shock (IEC 60068-2-27)
- Freefall (IEC 60068-2-32)
- Vibration (IEC 60068-2-6)

Warranty

- Lifetime

Package Contents

- TI-G51SC
- Quick Installation Guide
- Removable terminal block
- DIN-Rail / wall mount kit

All references to speed are for comparison purposes only. Product specifications, size, and shape are subject to change without notice, and actual product appearance may differ from that depicted herein.

TRENDnet offers a lifetime warranty for all of its metal-enclosed network switches that have been purchased in the United States/Canada on or after 1/1/2015. Cooling fan and internal power supply carry a one-year warranty.