

TFU-430

**4-port USB and 3-port FireWire Combo Hub
Quick Installation Guide**

**Guide d'installation rapide du
Combo Hub FireWire/USB 2.0 à 7 ports**

**Anleitung zur Schnellinstallation des
USB-2.0-FireWire-ComboHub mit 7 Anschlüssen**

**Guía de Instalación Rápida
Hub combinado de 7 puertos USB 2.0/FireWire**

Version 08.02.04



TRENDnet[®]
TRENDware, USA
What's Next in Networking

Table of Contents

English	1
1. Prepare for Installation	1
2. Introduction	2
3. Product Detail	3
4. Hardware Installation	4
5. Driver Installation	5
6. Verify Installation	6
7. Connect Peripherals	8
Troubleshooting	9

English QIG

1. Prepare for Installation

Thank you for purchasing TRENDnet's TFU-430 4-port USB and 3-port FireWire Combo Hub.

This guide will help you set up your 4-port USB and 3-port FireWire Combo Hub. Following the installation should be quick and easy. If you run into problems, please refer to the Troubleshooting section. If you need further technical support, please visit www.TRENDNET.com or call technical support by phone.

Verify Package Contents

Please make sure you have everything in the box:



Minimum Hardware Requirements

1. Pentium 233Mhz or faster with at least 64MB RAM
2. USB 1.1/2.0 port on your computer
3. IEEE 1394 port on your computer
4. Windows XP, 2000, ME, 98SE or Mac OS 8.6 or later

2. Introduction

The TFU-430 is a high-speed external 4-port USB 2.0 and 3-port FireWire IEEE 1394 combo Hub that allows you to simultaneously connect external USB and FireWire peripherals to its ports at data transmission speeds of up to 480Mbps and 400Mbps, respectively.

Hardware Support

The TFU-430 USB and FireWire Combo Hub is compatible with all popular external USB and FireWire peripherals, including keyboards, mouse, joysticks, speakers, modems, printers, scanners, digital cameras/camcorders, CD/DVD RW ROM drives, and external storage hard drives. Using a daisy chain configuration, the TFU-430 supports up to 127 external USB devices and up to 63 external FireWire devices.

Software Support

The TFU-430 USB and FireWire Combo Hub is compatible with the following operating systems: Windows 98SE/ME/2000/XP/2003 Server and Mac OS 8.6 or later.

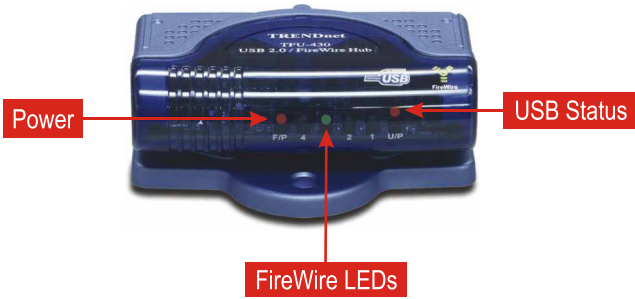
Plug-N-Play and Hot-Pluggable

Because the TFU-430 connects to your computer via a USB/FireWire interface, it is both Plug-and-Play and Hot-Pluggable.

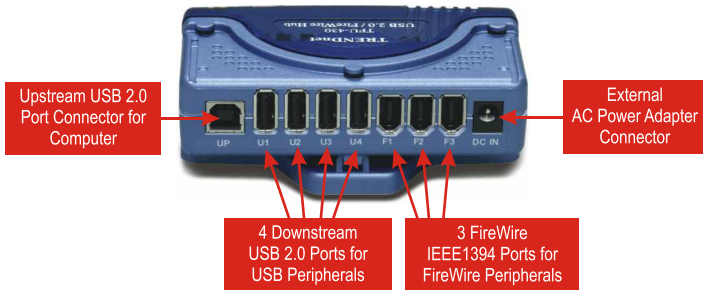
The TRENDnet's TFU-430 USB and FireWire Combo Hub is perfect for use at home or in the office.

3. Product Detail

Front LED Indicators



Back Connectors



The 4-Port USB Hub has four downstream USB ports and one upstream USB port connector. The 3-Port FireWire Hub supports two downstream and one upstream FireWire connections.

Note: Any FireWire port can be used as a downstream port or an upstream port.

4. Hardware Installation

Because the TFU-430 is hot-pluggable, you can connect or disconnect the TFU-430 while the computer is on. Also, the TFU-430 is bus-powered and therefore does not require an AC Power Adapter. However, if you use high-speed external USB or FireWire peripherals, it is recommended that you use the included external AC Power Adapter.

1. Connect the included AC Power Adapter to the TFU-430 and to a power outlet.
2. Connect the included USB cable from the TFU-430's USB Upstream port to your computer's USB port.
3. Connect the included IEEE 1394 FireWire cable from one of the TFU-430's FireWire ports to your computer's IEEE 1394 FireWire port. (If you plan to use FireWire peripherals)



5. Driver Installation

Once you connect the TFU-430 to your computer, Windows (98SE/ME/2000/XP) or Mac OS will automatically detect and install a standard generic USB driver for the TFU-430. (No driver is needed for the FireWire hub)

Congratulations!
Installation is now complete.

The TFU-430 does not come with a driver diskette or CD-ROM because it is fully plug-and-play. You may begin to use the TFU-430 without restarting your the computer.

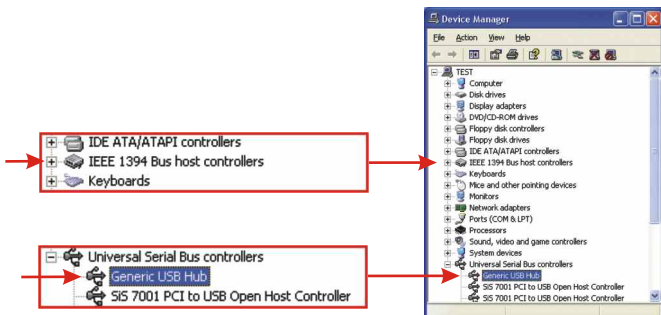
Note: If you would like to verify that the TFU-430 has been installed properly on your Windows PC, go to the Verify Installation section.

6. Verify Installation

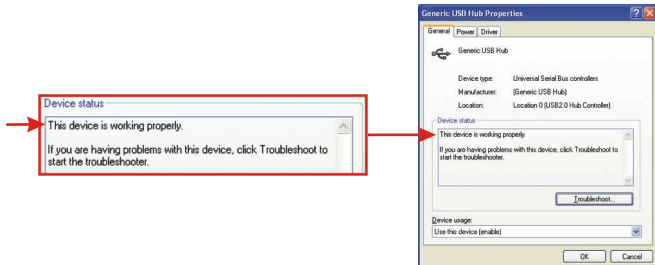
Windows 2000/XP

1. Click **Start**, and then click **Control Panel**.
2. Double-click the **System** icon. On the **Hardware** tab, click the **Device Manager** tab.
3. Expand the “Universal Serial Bus controllers” heading to verify that the **Generic USB Hub** device has been installed.
4. Verify that your computer has an IEEE 1394 Bus host Controller installed for connecting external FireWire devices.

Note: The IEEE 1394 Bus Controller for the FireWire device may be named differently in the Device Manager.



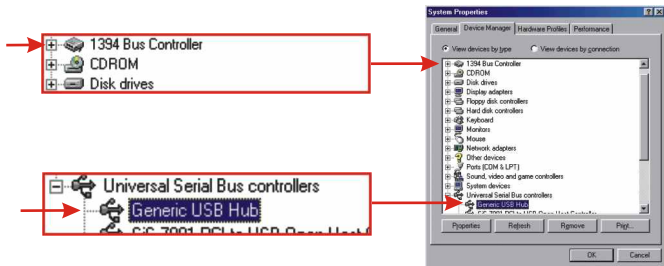
5. Double-click **Generic USB Hub** to open the Generic USB Hub Properties window.
6. Verify that the device status message says “This device is working properly.”



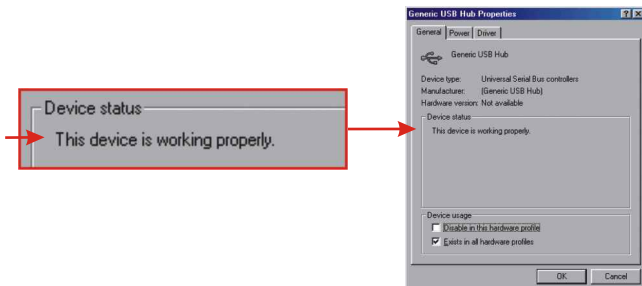
Windows 98SE/ME

1. Click **Start**, click **Settings**, then click **Control Panel**.
2. Double-click the **System** icon, and click the Device Manager tab.
3. Expand the “Universal Serial Bus controllers” heading to verify that the **Generic USB Hub** device has been installed.
4. Verify that your computer has a 1394 Bus Controller installed for connecting external FireWire devices.

Note: The IEEE 1394 Bus Controller for the FireWire device may be named differently in the Device Manager.

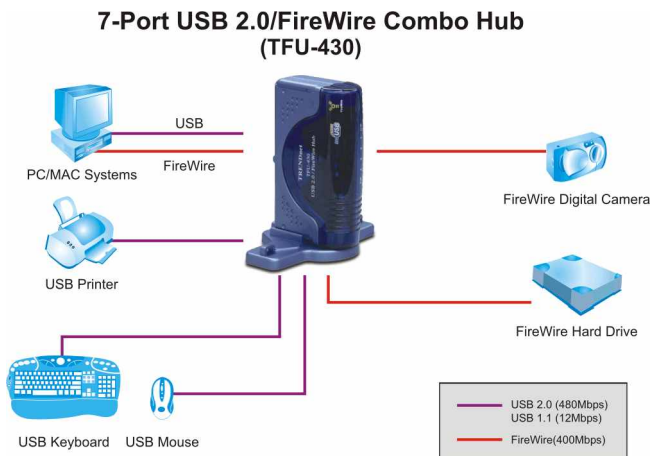


5. Double-click the **Generic USB Hub** to open the Generic USB Hub Properties window.
6. Verify that the device status message says “This device is working properly.”



7. Connect Peripherals

Connect your USB device to an available USB port or FireWire device to an available FireWire port on the back of the TFU-430.



Note: In the example, the TFU-430 is connected to a FireWire-enabled Digital Camera, FireWire Hard Drive, USB printer, USB Mouse, and USB Keyboard.

Q1: Where is the driver diskette or CD-ROM for the TFU-430?

A1: The TFU-430 does not require unique drivers; it uses generic USB and pre-installed FireWire drivers provided by your operating system.

Q2: Can I connect or disconnect the USB or FireWire cables while the computer is on?

A2: Yes, you can connect or disconnect the USB or FireWire cable, or any external USB or FireWire device while the computer is on, because the USB and FireWire interfaces are Plug-and-Play and hot-pluggable.

Q3: My computer has a FireWire (IEEE 1394) interface but the FireWire port doesn't seem to work. What should I do?

A3: You must have the FireWire Host Controller installed properly for your computer's FireWire port to work. For more information regarding FireWire Host Controller installation, please refer to your computer's User Manual.

Q4: My computer has a USB interface but the USB port doesn't seem to work. What should I do?

A4: You must enable the USB option in your BIOS settings for your computer's USB port to work. For more information regarding BIOS settings, please refer to your computer's User Manual. If you have further questions, please contact Trendware's Technical Support Department.

If you have any questions regarding the TFU-430 USB and FireWire Combo Hub, please contact Trendware Technical Support Department.

Contact Technical Support

Telephone: +1-310-626-6252
Fax: +1-310-626-6267
Website: www.TRENDNET.com
E-mail: support@trendware.com

Technical Support Hours

7:00AM ~ 6:00PM, Monday through Friday
Pacific Standard Time (except holidays)

Certifications

This equipment has been tested and found to comply with Part 15 of the FCC Rules. Operation is subject to the following two conditions:

- (1) This device may not cause harmful interference.
- (2) This device must accept any interference received, including interference that may cause undesired operation.

This equipment is in compliance with the requirements of the following regulations: EN 55 022: CLASS B



TRENDware, USA

What's Next in Networking

Product Warranty Registration

Please take a moment to register your product online.
Go to TRENDware's website at <http://www.TRENDNET.com>

TRENDware International, Inc.
3135 Kashiwa Street
Torrance, CA 90505

<http://www.TRENDNET.com>