



Guía de instalación rápida 

TFM-561U
V1

Table of Contents

Español	1
1. Antes de iniciar	1
2. Cómo se instala	2
<hr/>	
Troubleshooting	5



Contenidos del paquete

- TFM-561U
- CD-ROM del controlador
- Guía de instalación rápida multilingüe
- Cable telefónico RJ11

Requisitos del sistema

- Una unidad de CD-ROM
- Puertos USB: 2.0 ó 1.1
- Disco duro: 4MB o más

Compatible con sistemas operativos	CPU	Memoria
Windows 7 (32/64-bit)	1GHz o superior	1GB RAM o superior
Windows Vista (32/64-bit)	800MHz o superior	512MB RAM o superior
Windows XP (32/64-bit) / 2000	300MHz o superior	256MB RAM o superior

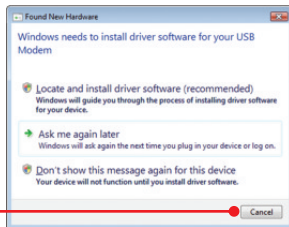
2. Cómo se instala

¡Importante! NO instale el TFM-561U hasta que no se le indique.

1. Retire la cobertura del USB TFM-561U y luego conecte el módem a un puerto USB 2.0 ó 1.1 disponible en el PC.

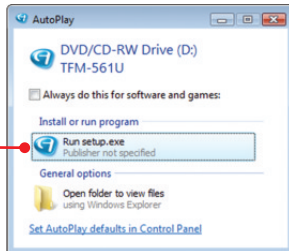


2. Cuando le aparezca el Add New Hardware Wizard (Asistente para añadir nuevo Hardware) o el Found New Hardware Wizard (Asistente para el nuevo hardware encontrado), haga clic en Cancel (Cancelar) (Windows Vista/XP/2000).



3. Inserte el CD-ROM del controlador en su unidad de CD-ROM.

4. Haga clic en Run Setup.exe (sólo para Windows Vista).



ENGLISH

FRAÇAIS

DEUTSCH

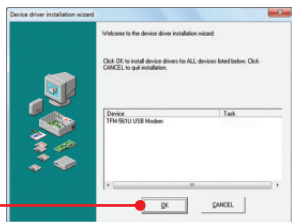
ESPAÑOL

РУССКИЙ

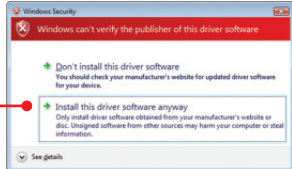
5. Haga clic en instalar el controlador (Install Driver) y entonces seleccione su sistema operativo.



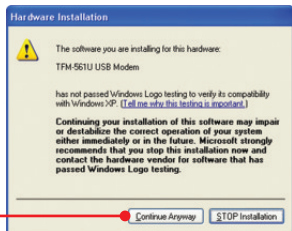
6. Haga clic en OK.



7. Haga clic en Install this driver software anyway (Instalar el software de este controlador de todas formas) (Windows 7/Vista).



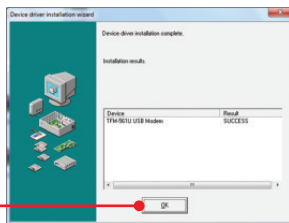
8. Haga clic en Continue Anyway (Continuar de todas formas). (Windows XP)



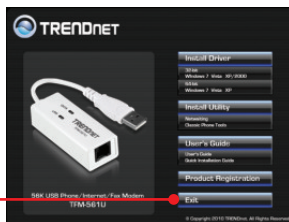
9. Haga clic en Yes (Si). (Windows 2000).



10. Haga clic en OK.



11. Haga clic en Exit (Salir).



12. Conecte un cable de teléfono desde el módem a un jack telefónico.



La instalación ha sido completada

Para obtener información más detallada sobre la configuración y las opciones de configuración avanzadas de la TFM-561U, por favor consulte la sección de resolución de problemas en el CD-ROM del controlador, o el sitio Web de TRENDnet en <http://www.trendnet.com>.

Registre su producto

Para asegurar los más altos niveles de servicio y apoyo al cliente, registre su producto en línea en: www.trendnet.com/register Gracias por elegir TRENDnet.

1. I inserted the Driver CD-ROM into my computer's CD-ROM Drive but the installation menu does not appear automatically. What should I do?

1. For Windows 7, if the installation menu does not appear automatically, click on the Windows Icon on the bottom left hand corner of the screen,, click the "Search programs and files" box, and type D:\setup.exe, where "D" in "D:\setup.exe" is the letter assigned to your CD-ROM Drive, and then press the ENTER key on your keyboard.
2. For Windows Vista, if the installation menu does not appear automatically, click Start, click the Start Search box, and type D:\setup.exe where "D" in "D:\setup.exe" is the letter assigned to your CD-ROM Drive, and then press the ENTER key on your keyboard.
3. For Windows XP/2000, if the window does not appear automatically, click Start, click Run and type D:\setup.exe where "D" in "D:\setup.exe" is the letter assigned to your CD-ROM Drive, and then press the ENTER key on your keyboard.

2. I inserted the modem into my computer's USB port and my computer does not detect the modem? What should I do?

1. Make sure the computer meets the minimum system requirements as shown at the beginning of this quick installation guide.
2. Verify that the modem is properly inserted in the computer's USB port.
3. Connect the modem into a different USB port.

3. After successful installation of the TFM-561U, I tried to connect to the Internet but I do not get a dial tone. What should I do?

1. Unplug the telephone wire from the computer, and check for a dial tone by connecting the telephone cable directly from the wall outlet to a telephone. If there is no dial tone, then the problem is in your telephone cable or telephone system. Call your telephone service provider for assistance. If there is a dial tone, reconnect the cable to the modem and verify that the telephone cord is securely connected to the modem and phone jack.
2. Make sure you are connecting the modem into an analog phone line. The modem will not work with a digital phone line.
3. Contact your ISP and verify all the information that you have in regards to your Internet connection settings is correct.

4. Do I need to install the Netwaiting (Modem on Hold) or Classic Phone Tools software programs?

The Netwaiting or Classic Phone Tools software programs are not required to operate the modem. To use Netwaiting, please refer to the user's guide included on the Driver CD-ROM. To use Classic Phone Tools, open the program and click on the Help button.

If you still encounter problems or have any questions regarding the TFM-561U, please refer to the User's Guide included on the Driver CD-ROM or contact TRENDnet's Technical Support Department.

Certifications

This equipment has been tested and found to comply with FCC and CE Rules.

Operation is subject to the following two conditions:

- (1) This device may not cause harmful interference.
- (2) This device must accept any interference received. Including interference that may cause undesired operation.



Waste electrical and electronic products must not be disposed of with household waste. Please recycle where facilities exist. Check with you Local Authority or Retailer for recycling advice.



NOTE: THE MANUFACTURER IS NOT RESPONSIBLE FOR ANY RADIO OR TV INTERFERENCE CAUSED BY UNAUTHORIZED MODIFICATIONS TO THIS EQUIPMENT. SUCH MODIFICATIONS COULD VOID THE USER'S AUTHORITY TO OPERATE THE EQUIPMENT.

ADVERTENCIA

En todos nuestros equipos se mencionan claramente las características del adaptador de alimentación necesario para su funcionamiento. El uso de un adaptador distinto al mencionado puede producir daños físicos y/o daños al equipo conectado. El adaptador de alimentación debe operar con voltaje y frecuencia de la energía eléctrica domiciliar existente en el país o zona de instalación.



Product Warranty Registration

Please take a moment to register your product online.
Go to TRENDnet's website at <http://www.trendnet.com/register>