



Руководство по быстрой установк 

TFM-561U
V1

Table of Contents

Русский	1
1. Подготовка к монтажу	1
2. Порядок установки	2
<hr/>	
Troubleshooting	5



Содержимое упаковки

- TFM-561U
- CD-ROM-диск с драйвером
- Руководство по быстрой установке на нескольких языках
- Телефонный кабель RJ11

Системные требования

- CD-ROM-привод
- Компьютер с портом USB 2.0 или 1.1
- Место на накопителе на жестких дисках: 4 Мб или более

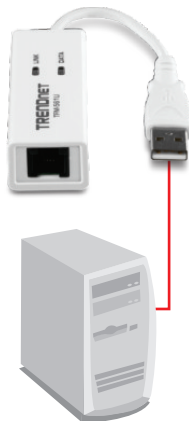
Поддерживаемые OS	ЦП	Память
Windows 7 (32/64-bit)	1ГГц или выше	1ГБ RAM или более
Windows Vista (32/64-bit)	800МГц или выше	512МБ RAM или более
Windows XP (32/64-bit) / 2000	300МГц или выше	256МБ RAM или более

2. Порядок установки

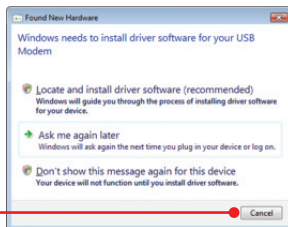
Это важно!

Не получив необходимого указания, НЕ устанавливайте в компьютере TFM-561U.

1. Снимите крышку с устройства TFM-561U USB и затем присоедините модем к имеющемуся порту USB 2.0 или 1.1 компьютера.

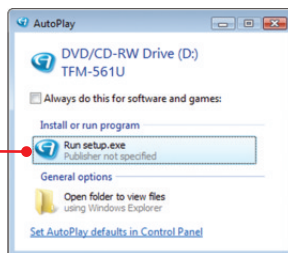


2. При появлении Мастера установки нового оборудования щелкните по кнопке Отмена (Windows Vista/XP/2000).



3. Установите в дисковод CD-ROM компакт-диск с драйверами.

4. Нажмите **Run Setup.exe** (только для Windows 7/Vista).



ENGLISH

Français

DEUTSCH

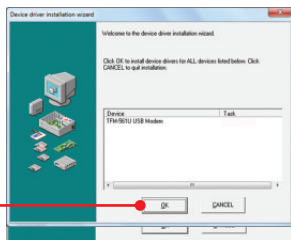
ESPAÑOL

РУССКИЙ

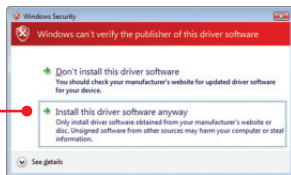
5. Нажмите «Установить драйвер» (Install Driver) и затем выберите Вашу операционную систему.



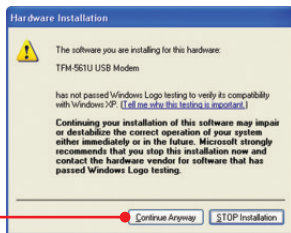
6. Щелкните по кнопке ОК.



7. Нажмите **Install this driver software anyway** (Все равно установить драйвер) (Windows 7/Vista).



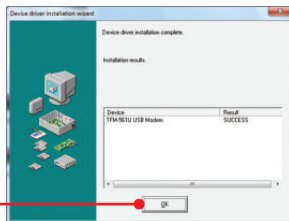
8. Щелкните по кнопке **Все равно продолжить** (Continue Anyway) (Windows XP).



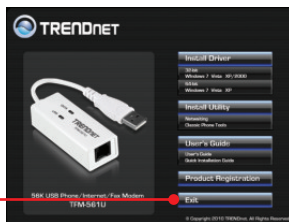
9. Щелкните по кнопке **Yes** (Да) (Windows2000).



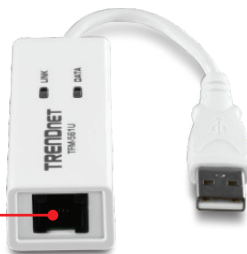
10. Щелкните по кнопке **OK**.



11. Щелкните по кнопке **Exit**.



12. Присоедините телефонный провод от модема к телефонному гнезду.



Установка завершена.

Подробную информацию о конфигурации устройства **TFM-561U** и его дополнительных настройках можно получить в разделе Устранение неисправностей из CD-ROM-диск или на веб-сайте TRENDnet по адресу <http://www.trendnet.com>.

Зарегистрируйте свой продукт

Для того, чтобы воспользоваться сервисным обслуживанием и поддержкой на высшем уровне, предлагаем вам зарегистрировать свой продукт в режиме онлайн здесь: www.trendnet.com/register Благодарим Вас за то, что Вы выбрали TRENDnet.

1. I inserted the Driver CD-ROM into my computer's CD-ROM Drive but the installation menu does not appear automatically. What should I do?

1. For Windows 7, if the installation menu does not appear automatically, click on the Windows Icon on the bottom left hand corner of the screen,, click the "Search programs and files" box, and type D:\setup.exe, where "D" in "D:\setup.exe" is the letter assigned to your CD-ROM Drive, and then press the ENTER key on your keyboard.
2. For Windows Vista, if the installation menu does not appear automatically, click Start, click the Start Search box, and type D:\setup.exe where "D" in "D:\setup.exe" is the letter assigned to your CD-ROM Drive, and then press the ENTER key on your keyboard.
3. For Windows XP/2000, if the window does not appear automatically, click Start, click Run and type D:\setup.exe where "D" in "D:\setup.exe" is the letter assigned to your CD-ROM Drive, and then press the ENTER key on your keyboard.

2. I inserted the modem into my computer's USB port and my computer does not detect the modem? What should I do?

1. Make sure the computer meets the minimum system requirements as shown at the beginning of this quick installation guide.
2. Verify that the modem is properly inserted in the computer's USB port.
3. Connect the modem into a different USB port.

3. After successful installation of the TFM-561U, I tried to connect to the Internet but I do not get a dial tone. What should I do?

1. Unplug the telephone wire from the computer, and check for a dial tone by connecting the telephone cable directly from the wall outlet to a telephone. If there is no dial tone, then the problem is in your telephone cable or telephone system. Call your telephone service provider for assistance. If there is a dial tone, reconnect the cable to the modem and verify that the telephone cord is securely connected to the modem and phone jack.
2. Make sure you are connecting the modem into an analog phone line. The modem will not work with a digital phone line.
3. Contact your ISP and verify all the information that you have in regards to your Internet connection settings is correct.

4. Do I need to install the Netwaiting (Modem on Hold) or Classic Phone Tools software programs?

The Netwaiting or Classic Phone Tools software programs are not required to operate the modem. To use Netwaiting, please refer to the user's guide included on the Driver CD-ROM. To use Classic Phone Tools, open the program and click on the Help button.

If you still encounter problems or have any questions regarding the TFM-561U, please refer to the User's Guide included on the Driver CD-ROM or contact TRENDnet's Technical Support Department.

Certifications

This equipment has been tested and found to comply with FCC and CE Rules.

Operation is subject to the following two conditions:

- (1) This device may not cause harmful interference.
- (2) This device must accept any interference received. Including interference that may cause undesired operation.



Waste electrical and electronic products must not be disposed of with household waste. Please recycle where facilities exist. Check with you Local Authority or Retailer for recycling advice.



NOTE: THE MANUFACTURER IS NOT RESPONSIBLE FOR ANY RADIO OR TV INTERFERENCE CAUSED BY UNAUTHORIZED MODIFICATIONS TO THIS EQUIPMENT. SUCH MODIFICATIONS COULD VOID THE USER'S AUTHORITY TO OPERATE THE EQUIPMENT.

ADVERTENCIA

En todos nuestros equipos se mencionan claramente las características del adaptador de alimentación necesario para su funcionamiento. El uso de un adaptador distinto al mencionado puede producir daños físicos y/o daños al equipo conectado. El adaptador de alimentación debe operar con voltaje y frecuencia de la energía eléctrica domiciliar existente en el país o zona de instalación.



Product Warranty Registration

Please take a moment to register your product online.
Go to TRENDnet's website at <http://www.trendnet.com/register>