



Anleitung zur Schnellinstallation 

TFM-561U
V1

Table of Contents

Deutsch	1
1. Bevor Sie anfangen	1
2. Installation	2
<hr/>	
Troubleshooting	5



Packungsinhalt

- TFM-561U
- Treiber CD-ROM
- Mehrsprachige Installationsanleitung
- RJ-11-Telefonkabel

Systemanforderungen

- Einem CD-ROM-Laufwerk
- Freier Speicherplatz auf Festplatte: 4 MB oder mehr
- USB-Port: 2.0 oder 1.1

Unterstützte Betriebssysteme	Prozessor	Speicher
Windows 7 (32/64-bit)	1GHz oder schneller	1GB RAM oder mehr
Windows Vista (32/64-bit)	800MHz oder schneller	512MB RAM oder mehr
Windows XP (32/64-bit) / 2000	300MHz oder schneller	256MB RAM oder mehr

2. Installation

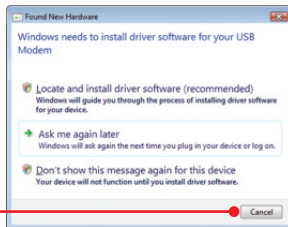
Wichtig!

Installieren Sie den TFM-561U NICHT im Computer, bevor Sie dazu aufgefordert werden.

1. Entfernen Sie die Haube des TFM-561U und stecken Sie das Modem in einen freien USB-2.0- oder -1.1-Port des Computers.

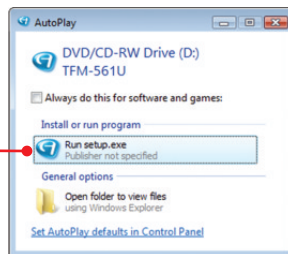


2. Wenn der Assistent "Neue Hardwarekomponente hinzufügen" bzw. "Neue Hardwarekomponente gefunden" erscheint, klicken Sie auf Cancel (Abbrechen) (Windows Vista/XP/2000).



3. Legen Sie die Treiber-CD in Ihr CD-ROM-Laufwerk ein.

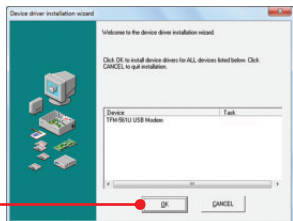
4. Klicken Sie auf Run Setup.exe (setup.exe ausführen) (nur Windows 7/Vista).



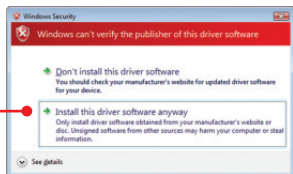
5. Klicken Sie Install Driver und wählen Sie dann Ihr Betriebssystem.



6. Klicken Sie auf OK.



7. Klicken Sie auf Install this driver software anyway (Treibersoftware dennoch installieren). (Windows 7/Vista).



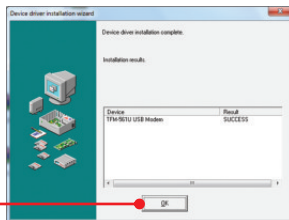
8. Klicken Sie auf Continue Anyway (Vorgang dennoch fortsetzen). (Windows XP).



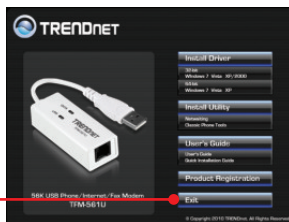
9. Klicken Sie auf Yes (Ja). (Windows 2000).



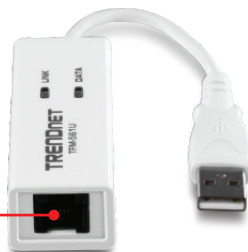
10. Klicken Sie auf OK.



11. Klicken Sie Exit.



12. Verbinden Sie das Modem über ein Telefonkabel mit einer Telefondose.



Ihre Installation ist beendet!

Weitere Informationen zu den Konfigurations- und erweiterten Einstellungen der TFM-561U finden Sie im Abschnitt „Problembehandlung“ der Bedienungsanleitung auf der beiliegenden Treiber-CD oder auf der Website von TRENDnet unter www.trendnet.com.

Registrieren Sie Ihr Produkt

Nehmen Sie sich bitte einen Moment Zeit und registrieren Sie Ihr Produkt online, so dass Sie unsere umfassenden Support- und Kundendienstleistungen in Anspruch nehmen können: www.trendnet.com/register Vielen Dank für den Kauf eines TRENDnet-Produkts.

1. I inserted the Driver CD-ROM into my computer's CD-ROM Drive but the installation menu does not appear automatically. What should I do?

1. For Windows 7, if the installation menu does not appear automatically, click on the Windows Icon on the bottom left hand corner of the screen,, click the "Search programs and files" box, and type D:\setup.exe, where "D" in "D:\setup.exe" is the letter assigned to your CD-ROM Drive, and then press the ENTER key on your keyboard.
2. For Windows Vista, if the installation menu does not appear automatically, click Start, click the Start Search box, and type D:\setup.exe where "D" in "D:\setup.exe" is the letter assigned to your CD-ROM Drive, and then press the ENTER key on your keyboard.
3. For Windows XP/2000, if the window does not appear automatically, click Start, click Run and type D:\setup.exe where "D" in "D:\setup.exe" is the letter assigned to your CD-ROM Drive, and then press the ENTER key on your keyboard.

2. I inserted the modem into my computer's USB port and my computer does not detect the modem? What should I do?

1. Make sure the computer meets the minimum system requirements as shown at the beginning of this quick installation guide.
2. Verify that the modem is properly inserted in the computer's USB port.
3. Connect the modem into a different USB port.

3. After successful installation of the TFM-561U, I tried to connect to the Internet but I do not get a dial tone. What should I do?

1. Unplug the telephone wire from the computer, and check for a dial tone by connecting the telephone cable directly from the wall outlet to a telephone. If there is no dial tone, then the problem is in your telephone cable or telephone system. Call your telephone service provider for assistance. If there is a dial tone, reconnect the cable to the modem and verify that the telephone cord is securely connected to the modem and phone jack.
2. Make sure you are connecting the modem into an analog phone line. The modem will not work with a digital phone line.
3. Contact your ISP and verify all the information that you have in regards to your Internet connection settings is correct.

4. Do I need to install the Netwaiting (Modem on Hold) or Classic Phone Tools software programs?

The Netwaiting or Classic Phone Tools software programs are not required to operate the modem. To use Netwaiting, please refer to the user's guide included on the Driver CD-ROM. To use Classic Phone Tools, open the program and click on the Help button.

If you still encounter problems or have any questions regarding the TFM-561U, please refer to the User's Guide included on the Driver CD-ROM or contact TRENDnet's Technical Support Department.

Certifications

This equipment has been tested and found to comply with FCC and CE Rules.

Operation is subject to the following two conditions:

- (1) This device may not cause harmful interference.
- (2) This device must accept any interference received. Including interference that may cause undesired operation.



Waste electrical and electronic products must not be disposed of with household waste. Please recycle where facilities exist. Check with you Local Authority or Retailer for recycling advice.



NOTE: THE MANUFACTURER IS NOT RESPONSIBLE FOR ANY RADIO OR TV INTERFERENCE CAUSED BY UNAUTHORIZED MODIFICATIONS TO THIS EQUIPMENT. SUCH MODIFICATIONS COULD VOID THE USER'S AUTHORITY TO OPERATE THE EQUIPMENT.

ADVERTENCIA

En todos nuestros equipos se mencionan claramente las características del adaptador de alimentación necesario para su funcionamiento. El uso de un adaptador distinto al mencionado puede producir daños físicos y/o daños al equipo conectado. El adaptador de alimentación debe operar con voltaje y frecuencia de la energía eléctrica domiciliar existente en el país o zona de instalación.



TRENDnet[®]

Product Warranty Registration

Please take a moment to register your product online.
Go to TRENDnet's website at <http://www.trendnet.com/register>