

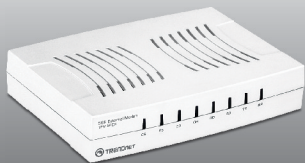


Quick Installation Guide  

TFM-560X
YO.13

Table of Contents

English	1
1. Before You Start	1
2. How to Install	2
.....	
Troubleshooting	6



Package Contents

- TFM-560X
- CD-ROM (Driver & User's Guide)
- Multi-Language Quick Installation Guide
- 1 x RJ-11 Telephone Cable
- 1 x RS-232 Serial Cable
- Power Adapter (9V AC, 1A)

System Requirements

- CD-ROM Drive
- RS-232 COM port
- Hard Drive Space: 4MB or above

Supported Operating Systems	CPU	Memory
Windows 7 (32/64-bit)	1GHz or above	1GB RAM or above
Windows Vista (32/64-bit)	800MHz or above	512MB RAM or above
Windows XP (32/64-bit) / 2000 / ME / 98SE	300MHz or above	256MB RAM or above

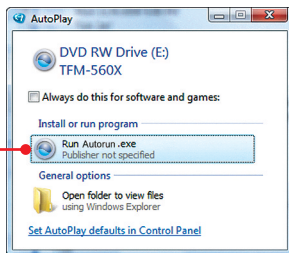
2. How to Install

Note:

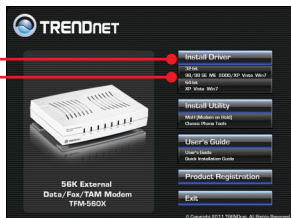
1. Refer to the User's Guide on the Driver CD-ROM for Windows 98SE and Windows ME installation instructions

1. Insert **Driver CD-ROM** into your computer's CD-ROM drive.

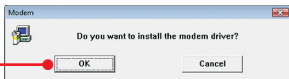
2. Click **Run Autorun.exe** (Windows 7/Vista only).



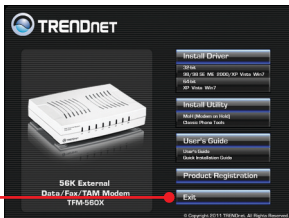
3. Click **Install Driver**. Then select your operating system.



4. Click **OK**.



5. Click **Exit** to close the installation window.



6. **Shutdown** your computer.

7. Plug the male end of the RS-232 cable into the TFM-560X. Then plug the female end of the RS-232 cable into your computer's COM port.



8. Plug one end of a RJ-11 telephone cable into the **LINE** port on the Modem, and then connect the other end into the telephone jack.

9. Connect the Power Adapter to the Modem and then to a power outlet.

10. Turn on the modem.

11. Connect your telephone into the **PHONE** port (optional).

12. Turn on the PC.

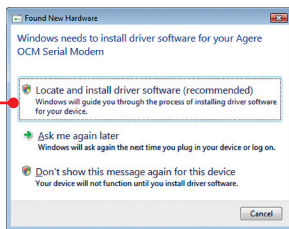


Note:

For Windows 7/2000 drivers will install automatically. Driver installation for Windows 7/2000 is now complete. For Windows Vista, continue on to step 13. For Windows XP, continue on to step 15.

Windows Vista

13. Click **Locate and install driver software (recommended)**.



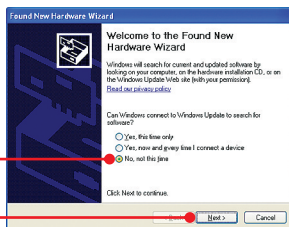
14. Click **Install this driver software anyway**.



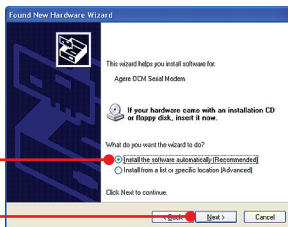
Note: Driver installation for Windows Vista is now complete.

Windows XP

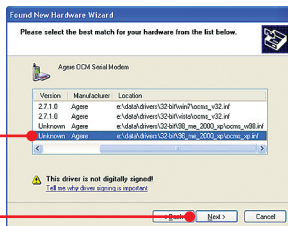
15. Select **No, not this time** and then click **Next**.



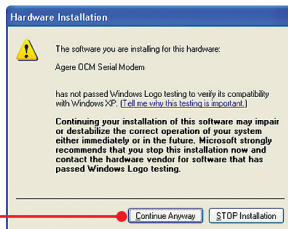
16. Select **Install the software automatically (Recommended)** and then click **Next**.



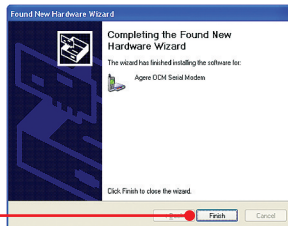
17. Select the Windows XP drivers and then click **Next**.



18. Click **Continue Anyway**.



19. Click **Finish**.



Note: Driver installation for Windows XP is now complete.

1. I inserted the Driver CD-ROM into my computer's CD-ROM Drive but the installation menu does not appear automatically. What should I do?

1. For Windows 7, if the installation menu does not appear automatically, click on the Windows Icon on the bottom left hand corner of the screen., click the "Search programs and files" box, and type D:\Autorun.exe, where "D" in "D:\Autorun.exe" is the letter assigned to your CD-ROM Drive, and then press the ENTER key on your keyboard.
2. For Windows Vista, if the installation menu does not appear automatically, click Start, click the Start Search box, and type D:\Autorun.exe where "D" in "D:\Autorun.exe" is the letter assigned to your CD-ROM Drive, and then press the ENTER key on your keyboard.
3. For Windows XP/2000, if the window does not appear automatically, click Start, click Run and type D:\Autorun.exe where "D" in "D:\Autorun.exe" is the letter assigned to your CD-ROM Drive, and then press the ENTER key on your keyboard.

2. I connected the modem to my computer's COM/RS-232 port and my computer does not detect the modem? What should I do?

1. Make sure the computer meets the minimum system requirements as shown at the beginning of this quick installation guide.
2. Verify that the modem is properly connected to the computer's RS-232 port.
3. Try connecting the modem into a different RS-232 port.

3. After successful installation of the TFM-560X, I tried to connect to the Internet but I do not get a dial tone. What should I do?

1. Unplug the telephone wire from the computer, and check for a dial tone by connecting the telephone cable directly from the wall outlet to a telephone. If there is no dial tone, then the problem is in your telephone cable or telephone system. Call your telephone service provider for assistance. If there is a dial tone, reconnect cables to the modem and verify that the telephone cable is securely connected to the modem and phone jack.
2. Make sure you are connecting the modem into an analog phone connection. The modem will not work with a digital phone line.
3. Contact your ISP and verify all the information that you have in regards to your Internet connection settings is correct.

4. How do I install the drivers on Windows 98SE or ME?

Please refer to the User's Guide included on the Driver CD-ROM.

5. Do I need to install the Modem on Hold or Classic Phone Tools software programs?

The Modem on Hold or Classic Phone Tools software programs are not required to operate the modem. To use Modem on Hold or Classic Phone Tools, open the program and click on the Help button.

If you still encounter problems or have any questions regarding the **TFM-560X** please contact TRENDnet's Technical Support Department.

Certifications

This equipment has been tested and found to comply with FCC and CE Rules.

Operation is subject to the following two conditions:

- (1) This device may not cause harmful interference.
- (2) This device must accept any interference received. Including interference that may cause undesired operation.



(01)07898431241061

0001-06-2375

Este equipamento opera em caráter secundário, isto é, não tem direito a proteção contra interferência prejudicial, mesmo de estações do mesmo tipo, e não pode causar interferência a sistemas operando em caráter primário



Waste electrical and electronic products must not be disposed of with household waste. Please recycle where facilities exist. Check with you Local Authority or Retailer for recycling advice.



NOTE: THE MANUFACTURER IS NOT RESPONSIBLE FOR ANY RADIO OR TV INTERFERENCE CAUSED BY UNAUTHORIZED MODIFICATIONS TO THIS EQUIPMENT. SUCH MODIFICATIONS COULD VOID THE USER'S AUTHORITY TO OPERATE THE EQUIPMENT.

ADVERTENCIA

En todos nuestros equipos se mencionan claramente las características del adaptador de alimentación necesario para su funcionamiento. El uso de un adaptador distinto al mencionado puede producir daños físicos y/o daños al equipo conectado. El adaptador de alimentación debe operar con voltaje y frecuencia de la energía eléctrica domiciliar existente en el país o zona de instalación.



Product Warranty Registration

Please take a moment to register your product online.
Go to TRENDnet's website at <http://www.trendnet.com/register>