



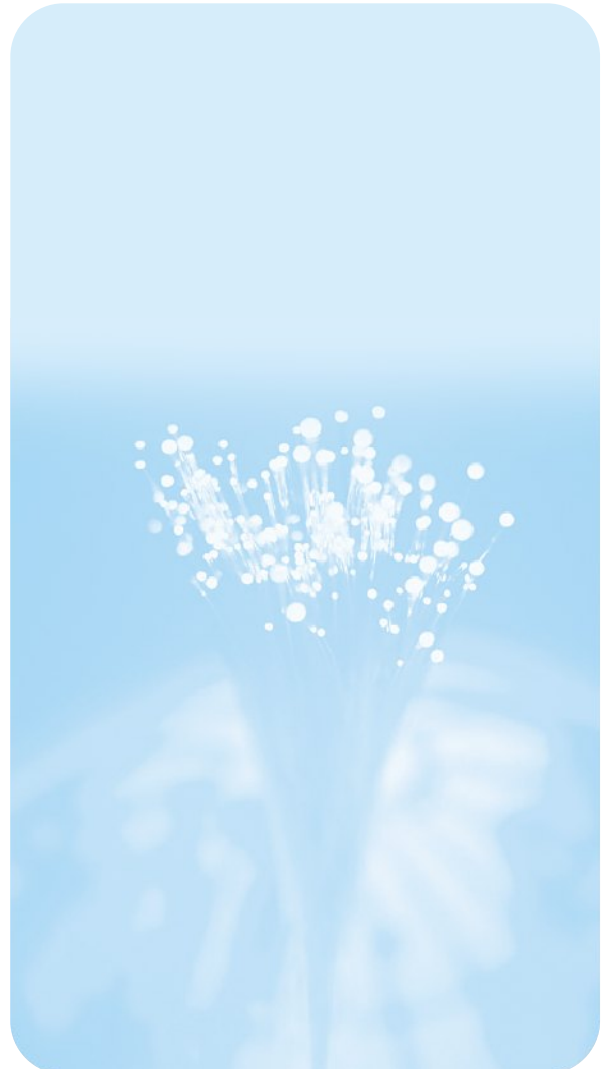
TFC-1000 SERIES Fiber Media Converter

TRENDnet's TFC-1000 series Fiber Media Converter transforms 1000Base-T (Copper Gigabit) media to 1000Base-SX/LX (Fiber Gigabit) media and vice versa. The 1000Base-T port supports full-duplex Gigabit connection at wire speed with RJ45 connector. The fiber Gigabit connection supports shortwave (SX) or longwave (LC) laser optic with multi-mode or single-mode SC type connector. This converter will give your Copper Gigabit connection the ability to interface with fiber connection over a distance up to 70 km. With the optional 16-slot EIA-19" rack-mount chassis, the TFC series converters are the perfect solutions for various fiber media



FEATURES

- Compliant with IEEE 802.3ab 1000Base-T and IEEE 802.3z 1000Base-SX / 1000Base-LX Gigabit Ethernet Standards
- One 1000Base-T port with RJ-45 connector, supports full-duplex copper Gigabit connection
- One 1000Base-SX or 1000Base-LX port that supports multi-mode or single-mode SC connector
- LED Indicators: Power, Link/Activity
- Extended single-mode fiber optic cable supports cable distance up to 50 km (31.25 miles)
- Wall-Mountable
- Optional 19" system chassis with redundant power supply, holds up to 16 TFC series Media Converters
- 5 Year Warranty



TFC-1000 SERIES Fiber Media Converter

SPECIFICATIONS

Standards:

- IEEE 802.3ab 1000Base-T,
IEEE 802.3z 1000Base-SX,
IEEE 802.3z 1000Base-LX

Supported Frame Size:

- No limitation (Standard Ethernet and Jumbo Frame)

Network Media:

- 1000Base-T: CAT 5, EIA/TIA-568 100-ohm Screen Twisted Pair (STP), up to 100 meters.
- 1000Base-SX: 62.5/125um multi-mode fiber optic cable, up to 220 meters. 50/125um multi-mode fiber optic cable, up to 550 meters
- 1000Base-LX: 62.5/125um multi-mode fiber optic cable, up to 550 meters. 10/125um single-mode fiber optic cable, up to 50 km.

Protocol:

- CSMA/CD

Ports:

- 1 x 1000Base-T, 1 x 1000Base-SX or 1000Base-LX

Data Transfer Rate:

- 2000Mbps (Full-Duplex)

Diagnostic LEDs:

- Power, LINK/ACT

Power Adapter:

- 7.5VDC/1.5A

Power Consumption:

- 7.2 Watts (max.)

Power Adapter:

- 7.5VDC, 1.5A (7.2 watts max.)

Dimensions:

- 120 x 88 x 25 mm (W x D x H)

Weight:

- Appro. 354 g. (12.5 Oz.)

Temperature:

- Operating: 0° ~ 40° C (32° ~ 104° F)
- Storage: -25° ~ 70° C (-13° ~ 158° F)

Humidity:

- Operating: 10% ~ 90%
- Storage: 5% ~ 90% (non-condensing)

Certifications:

- FCC, CE, VCCI



PRODUCT INFORMATION

- **TFC-1000MSC:** 1000Base-T to 1000Base-SX Multi-Mode Fiber with SC Connector
- **TFC-1000S20:** 1000Base-T to 1000Base-LX Single-Mode 20 km Fiber with SC Connector
- **TFC-1000S50:** 1000Base-T to 1000Base-LX Single-Mode 50 km Fiber with SC Connector
- **TFC-1000S70:** 1000Base-T to 1000Base-LX Single Mode 50 km Fiber Converter (Special order only)
- **TFC-1600:** 16-slot EIA-19" (2 Unit-Height) Chassis for TFC series Media Converters

ORDERING INFORMATION



TRENDware International, Inc.
3135 Kashiwa Street
Torrance, CA. 90505. USA
Tel: 310-891-1100
Fax: 310-891-1111
Web: www.TRENDNET.com
Email: sales@trendware.com

To Order Please Call:
1-888-326-6061