



User's Guide

TEW-P1PG

TABLE OF CONTENTS

ABOUT THIS GUIDE	4
INTRODUCTION	5
PACKAGE CONTENTS	5
SYSTEM REQUIREMENTS	6
GENERAL FEATURES	7
PRODUCT VIEW.....	8
HARDWARE INSTALLATION	10
NETWORKING APPLICATION	10
INSTALLING THE PRINT SERVER.....	11
USING THE UTILITIES	12
AUTO-RUN INSTALLATION	12
PS-UTILITY	14
<i>Installing PS-Utility</i>	14
<i>Using PS-Utility</i>	15
PS WIZARD.....	18
WEB CONFIGURATION	21
WEB CONFIGURATION UTILITY	21
STATUS	22
<i>Status → System</i>	23
<i>Status → Wireless</i>	24
<i>Status → Network</i>	26
<i>Status → Active Users</i>	29
CONFIGURATION.....	30
<i>Configuration → System</i>	30
<i>Configuration → Wireless</i>	32
<i>Configuration → Network</i>	35
<i>Configuration → User</i>	38

<i>Configuration → E-mail</i>	40
<i>Configuration → SNMP</i>	43
TOOLS	44
<i>Tool → Print Test</i>	44
<i>Tool → E-mail</i>	45
<i>Tool → Reset</i>	46
<i>Tool → Factory Reset</i>	47
<i>Tool → Firmware Upgrade</i>	48
<i>Tool → Backup</i>	49
HELP	50
PRINTING IN WINDOWS 95/98/ME	51
INSTALLING THE LPR FOR TCP/IP PRINTING CLIENT	52
ADDING LPR PRINTER PORTS	54
PRINTING FROM WINDOWS 95/98/ME	56
SETTING TCP/IP PRINTING SETTINGS	59
PRINTING IN WINDOWS 2000/XP	61
SETTING UP WINDOWS 2000 TCP/IP PRINTING	61
SETTING UP WINDOWS XP TCP/IP PRINTING	69
PRINTING IN MAC OS	76
RENDEZVOUS USES IN MAC OS 10.2	76
SETTING UP APPLE TALK/LPR PRINTING	79
<i>For MAC OS X User</i>	79
<i>For MAC OS 9 User</i>	81
<i>For MAC OS 9 User</i>	82

ABOUT THIS GUIDE

This manual provides instructions and illustrations on how to use your 802.11g Wireless Pocket-size Print Server, including:

- Chapter 1, **Introduction**, provides the general information on the product.
- Chapter 2, **Hardware Installation**, describes the hardware installation procedure for the product.
- Chapter 3, **Using the Utilities**, helps you to install and use the software.
- Chapter 4, **Web Configuration**, completes the configuration using the web browser.
- Chapter 5, **Printing in Windows 95/98/ME OS**, lets you complete printing task through your print server in Windows 95/98/ME environment.
- Chapter 6, **Printing in 2000/XP OS**, lets you complete printing task through your print server in Windows 2000/XP environment.
- Chapter 7, **Printing in Mac OS**, lets you complete printing task through your print server in Mac Environment.

Please note that the illustrations or setting values in this manual are **FOR YOUR REFERENCE ONLY**. The actual settings and values depend on your system and network. If you are not sure about the respective information, please ask your network administrator or MIS staff for help.

INTRODUCTION

TEW-P1PG is a print server that transforms virtually any stand-alone Parallel printer into a shared network printer. The TEW-P1PG provides IEEE 802.11g 54Mbps wireless interface for integrating into existing wireless network. The TEW-P1PG is designed for printers equipped with parallel compliant printer port and it is an ideal network solution to convert conventional parallel printer into a shared resource on the network.

Package Contents

Unpack the package and check all the items carefully, and be certain that you have:

- ◆ TEW-P1PG
- ◆ Quick Installation Guide
- ◆ Utility CD-ROM with User's Guide
- ◆ AC Power Adapter suitable for your country's electric power service.

If any packaging content is missing, please contact your local dealer immediately. Please keep all packing material for further shipment as needed.

System Requirements

◆ Operating System:

Microsoft Windows 98SE/ME/NT/2000/XP/2003 Server

Microsoft Windows NT (3.51 or later).

Apple Mac OS (with Apple Talk support).

◆ For Web Configuration:

Java-enabled web browser, such as Microsoft® Internet Explorer 5.0 and Netscape Navigator 6.0.

General Features

- ◆ Wi-Fi Compliant with IEEE 802.11b/g devices
- ◆ One RJ-45 10/100Mbps Auto-MDIX Fast Ethernet Port
- ◆ Includes LPR Program for Windows 95/98/ME TCP/IP Printing
- ◆ Supports IPP Printing for Windows 2000/XP

- ◆ Printing over Email

- ◆ Supports second HTTP port for Remote Web Configuration and IPP Printing

- ◆ Supports Mac 10.2 “Rendezvous” Zero-Configuration Function

- ◆ TCP/IP protocol supports DHCP, IPP, LPR, HTTP

- ◆ Supports Macintosh Rendezvous Zero Configuration

- ◆ IP Assignment supports for DHCP

- ◆ Supports 64/128-bit WEP, WPA Encryption

- ◆ IP Assignment supports for DHCP

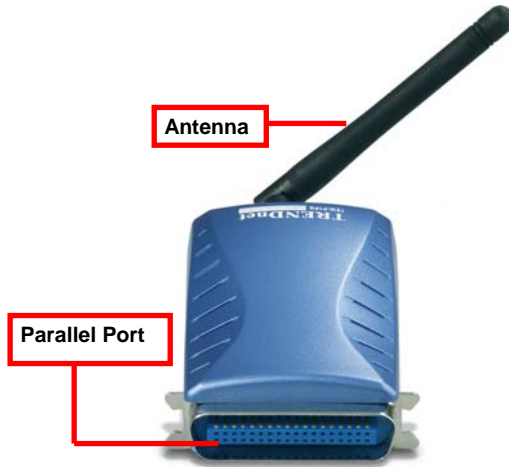
- ◆ Includes Windows-Based Administrative program and Web-Based configuration
Built-in flash memory for easy firmware upgrade

- ◆ 3-Year Warranty

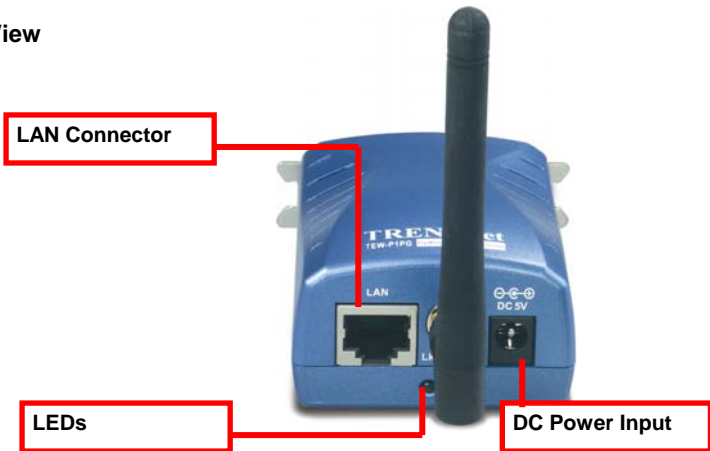
Product View

This section describes the externally visible features of the print server.

Front View



Rear View



There are four green LED indicators on the front panel:

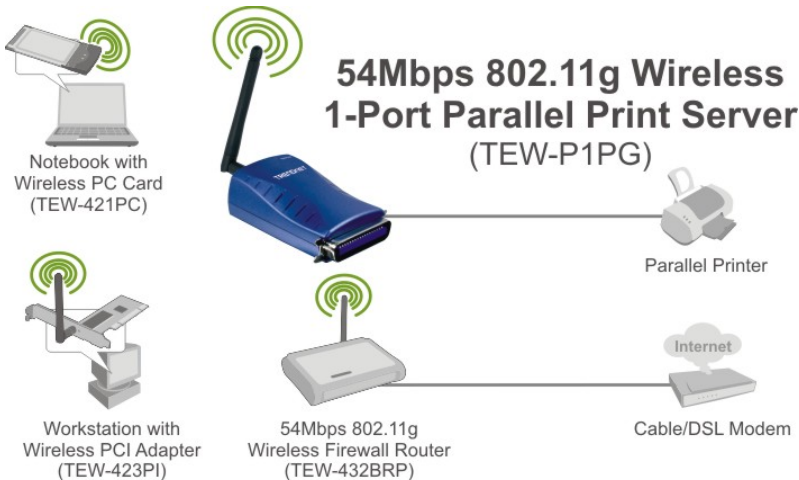
LEDs	Description
Pw (Power)	Steady light confirms that the Print Server is powered on.
LPT	Steady light confirms that the print has a good connection to print server.
Lk (Link/Act)	Steady light confirms that the print server has a good connection to your wireless network. When it blinks (briefly dark), the print server is receiving/ transmitting data from/to the wireless network.

2

HARDWARE INSTALLATION

Networking Application

The following diagram explains the application of your print server.



*Mac Systems are only compatible with Post-Script printers

Installing the Print Server

Follow these steps for a trouble-free start of operations with your print server.

1. Confirm proper operation of the printer to be connected to the print server.
2. When you have confirmed proper operation of the printer, turn off the power.
3. Confirm that your network is operating normally.
4. Connect the print server to the network (through the RJ-45 connector of the print server).
5. While the printer is powered off, connect the print server to the printer's Parallel port.
6. Turn on the printer's power.
7. Connect the DC end of the AC Power adapter to the DC power input socket of the print server and the AC end to the wall outlet. This will supply power to the print server immediately.

NOTE: *This print server is built with a default IP Address. To prevent from any conflict in your network, it is recommended to use the PS-Utility program to change the IP setting when there is some other device's IP Address is the same as the print server's default IP Address.*

USING THE UTILITIES

This chapter describes the software utilities for the print server, including how to set up your print server with these utility. The **PS-Utility** and **PS Wizard** are designed with a user-friendly interface that allows you to set up and administer the print server easily.

Auto-Run Installation

Insert the Installation CD-ROM into your computer's CD-ROM drive to initiate the Auto-Run program, and the menu screen will appear as below.



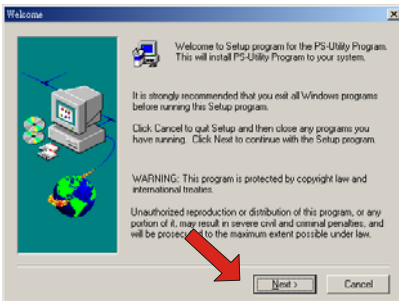
- **User's Guide** – click to preview the *User's Guide* in PDF format for detailed information of the Print Server.
- **Install Utility** – click to install PS-Utility. Please refer to the next section for detailed information on installing the utility.
- **PS Wizard** – click to launch the Printer Wizard program, which is helpful to set up the printer configuration easily and quickly.
- **Bonus** – Click to install the HP PhotoSmart Program
- **Exit** – click to close the Auto-Run program.

PS-Utility

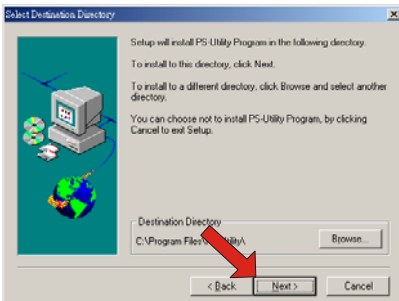
To avoid the conflict in your network, you can use PS-Utility to change the related settings of your print server (such as the IP address) after finishing the installation.

Installing PS-Utility

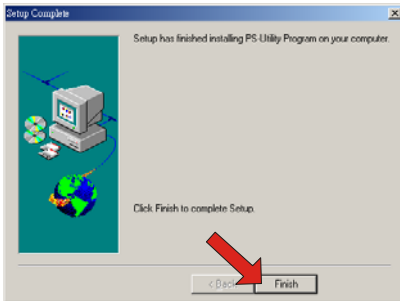
1. Click **Install Utility** from the Auto-Run menu screen. Once executed, the Setup program will extract files to launch the InstallShield Wizard; then, click **Next >** in the welcome screen of InstallShield Wizard.



2. Choose the destination location. If no specific requirement, leave the default setting and click **Next >**.



3. The InstallShield Wizard starts to install the software, and the Progress bar indicates the installation is proceeding.
4. When completed, click **Finish**.

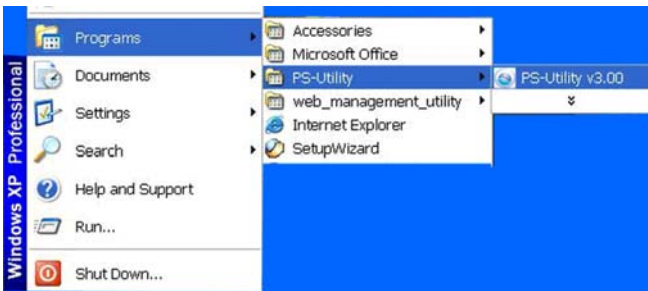


After installing the utility, the application program for the print server is automatically installed to your computer, and creates a folder in **Start\Programs\PS-Utility**.

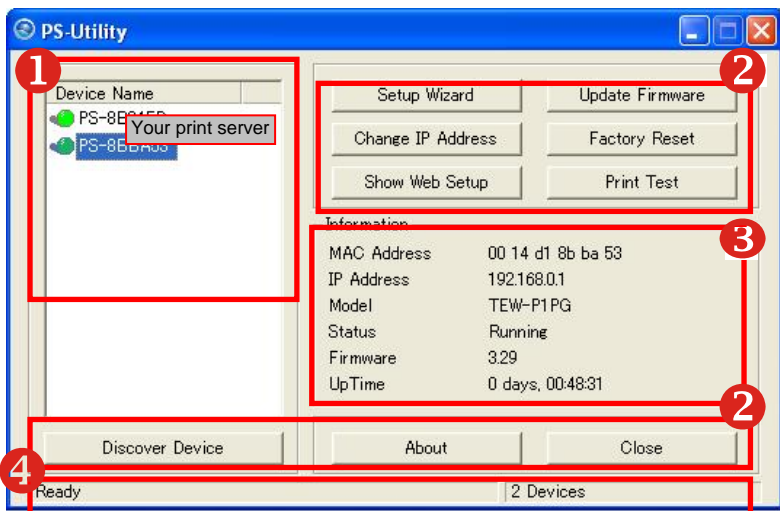
Using PS-Utility

This section describes the operation of PS-Utility. To launch PS-Utility:

1. Click **Start -> Programs -> PS-Utility**, and then click the **PS-Utility v3.00** item.



2. The main screen will appear as below, and it starts to search the connected print server within the network.



Component Features:

1. **Device List:** Display the connected print server within the network.

2. Control Buttons

- **Change IP Address:**

Click this button to bring up the following dialog box, allowing you to change the IP Address. In this dialog box, you can select either **Manually Assign** or **DHCP Assign Automatically**. When completed, click **OK**.



- **Update Firmware:** Click this button to update the firmware of the selected print server.

- **Show Web Setup:** Click this button to open your web browser and launch the Configuration Utility. Alternately, you can double-click the print server in the Device List to launch the Configuration Utility.

- **Factory Reset:** Click this button to reload the factory settings of the print server.

- **Discover Device:** Click this button to search the connected print server again.

- **About:** Click this button to bring up a window containing the basic information of PS-Utility.

- **Close:** Click this button to exit PS-Utility.

3 **Information Field:** Display the basic information of the selected print server in the Device List.

4 **Status Bar:** Display the system status.

PS Wizard

PS Wizard is a convenient utility that allows you to set up the print server's port connection.

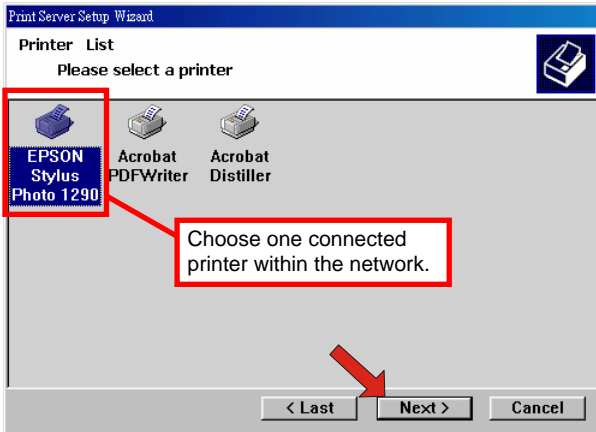
To launch PS Wizard:

1. Insert the Installation CD-ROM into your computer's CD-ROM drive, and click **PS Wizard** from the Auto-Run menu screen. The welcome screen appears as below. Click **Next >**.

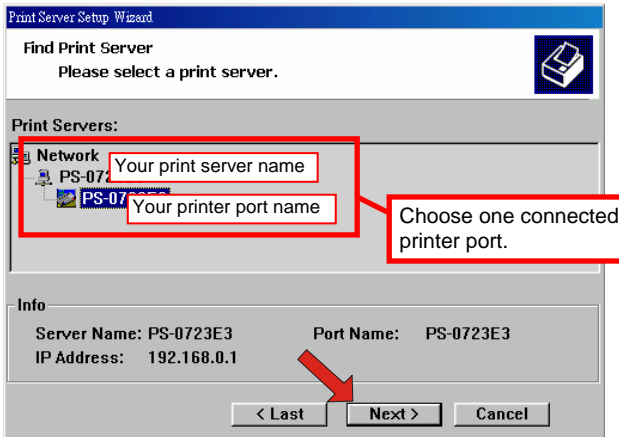


NOTE: For some specific printers, you may need to connect the printer to the computer and install the driver. In this case, connect it to the computer and install the driver first, and then connect it to the print server.

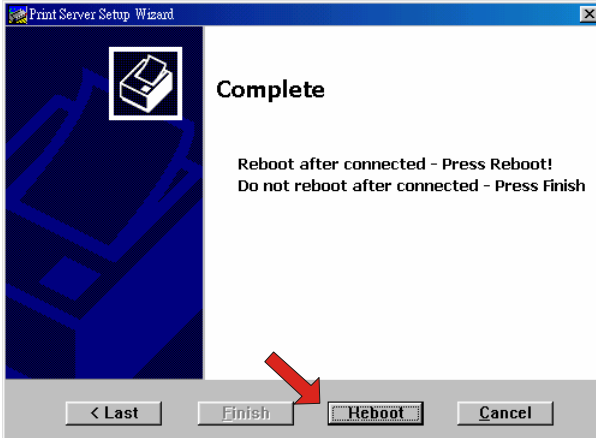
2. In the following window, select one printer in the Printer List to set up port connection, and then click **Next >**.



3. Select one printer port in the Print Server List, and click **Next >**.



4. The configuration is completed, click **Reboot** and then **Yes** to restart the system.



After rebooting, PS Wizard will help you to complete the port connection automatically. You can start your printing task without any complex configuration.

TIP: If you use Windows 2000/XP, the system will not restart to complete the installation.

WEB CONFIGURATION

You can access and manage the Print Server through: 1) the enclosed software PS-Utility, and 2) a web browser. This chapter describes the second method – the Web Configuration Utility, and explains how to set up your print server with the web browser.

Web Configuration Utility

First, launch your web browser (such as the Internet Explorer 6.0 used in this manual). Then, type *http://192.168.0.1* (the default IP address) in the Address bar and press [Enter] to enter the Management screen of the Configuration Utility.

TIP: *The computer's IP address must correspond with the print server's IP address in the same segment for the two devices to communicate. Extensive knowledge of LAN will be helpful in configuring the print server.*

Status

54Mbps 802.11g Wireless Parallel Print Server
TEW-P1PG

- Status
 - System
 - Wireless
 - Network
 - Active Users
- Configuration
- Tools
- Help

System

Device Status	
Server Name	PS-8B84FD
Model	TEW-P1PG
Firmware Version	3.29 (2006-10-12)
MAC Address	00 14 D1 8B 84 FD
IP Address	192.168.1.21 (DHCP)
Up Time	0 days, 00:03:57

Printer Status (LPT)	
Printer Name	PS-8B84FD-P1
Printer Speed	High
Printer Status	Off line
Total Print Jobs	0
Total Print Size	0 KBytes
Printing Status	Idle
	Name:
	MAC:
	IP:
	Protocol:
	Spooling Size: 0 Bytes
	Printing Size: 0 Bytes

Ethernet Status	
Link	Yes
Speed	100M bps
Full Duplex	Yes
Tx Packets	151
Tx Errors	0
Rx Packets	644
Rx Errors	0

[Refresh](#)

Copyright © 2006 TRENDnet. All Rights Reserved.

The Management screen displays the basic information of the print server, including the following four categories: **System**, **Wireless**, **Network**, and **User**.

***Status* → System**

As shown above, the **System** displays the status of your print server, printer, and network. Clicking *Refresh* will update the information.

Device Status

The information about the print server can be found in this field, including the product model, firmware version, MAC address, IP address, and up time.

Device Status	
Server Name	PS-8B84FD
Model	TEW-P1PG
Firmware Version	3.29 (2006-10-12)
MAC Address	00 14 D1 8B 84 FD
IP Address	192.168.1.21 (DHCP)
Up Time	0 days, 00:03:57

Printer Status

The items in this field display the information of the printer, such as the given name for the printer, speed, printer status, and status of your printing tasks, etc.

Printer Status (LPT)	
Printer Name	PS-8B84FD-P1
Printer Speed	High
Printer Status	Off line
Total Print Jobs	0
Total Print Size	0 KBytes
Printing Status	Idle
	Name:
	MAC:
	IP:
	Protocol:
	Spooling Size: 0 Bytes
	Printing Size: 0 Bytes

Ethernet Status

You can monitor the networking status in this field, including the network connection, speed, and the packets status.

Ethernet Status	
Link	Yes
Speed	100M bps
Full Duplex	Yes
Tx Packets	151
Tx Errors	0
Rx Packets	644
Rx Errors	0
	<input type="button" value="Refresh"/>

Status → Wireless

Click the **Wireless** item in the left column to display the information of the wireless LAN. Clicking *Refresh* will update the information.

TRENDnet 54Mbps 802.11g Wireless Parallel Print Server
TEW-P1PG

Status

- System
- Wireless
- Network
- Active Users

Configuration

Tools

Help

Wireless

Wireless Status

Connection Mode	Infrastructure
Link	No
SSID	default (MAC : 00 00 00 00 00 00)
Channel	11
Transmission Rate	54M bps
Encryption	No
Tx Packets	0
Tx Errors	0
Rx Packets	0
Rx Errors	0

[Refresh](#)

Copyright © 2006 TRENDnet. All Rights Reserved.

Wireless Status

The items in this field display the information of the wireless LAN, such as the connection mode (Infrastructure or Ad-Hoc), SSID, channel, data transfer rate, WEP encryption, and the packets status.

Status → Network

Click the **Network** item to display the information of the LAN. Clicking *Refresh* will update the information.

TRENDnet 54Mbps 802.11g Wireless Parallel Print Server TEW-P1PG

Status

- System
- Wireless
- **Network**
- Active Users

Configuration

Tools

Help

Network

Auto IP

DHCP/BOOTP	Enable (IP : 192.168.1.21)
UPnP	Enable (IP : 192.168.1.21)
MAC Rendezvous	Enable (IP : 169.254.132.253)

TCP/IP Printing

LPR Printing	Status : Running Total Print Jobs : 0 Total Print Size : 0 KBytes
Port (9100) Printing	Status : Running Total Print Jobs : 0 Total Print Size : 0 KBytes
IPP Printing	Status : Running Total Print Jobs : 0 Total Print Size : 0 KBytes
FTP Printing	Status : Running Total Print Jobs : 0 Total Print Size : 0 KBytes
E-mail Printing	Status : Running Total Print Jobs : 0 Total Print Size : 0 KBytes

Microsoft Network Printing

SMB (Over NetBEUI) Printing	Status : Running Total Print Jobs : 0 Total Print Size : 0 KBytes
SMB (Over NBT) Printing	Status : Running Total Print Jobs : 0 Total Print Size : 0 KBytes

MAC AppleTalk Printing

AppleTalk Printing	Status : Running Total Print Jobs : 0 Total Print Size : 0 KBytes
---------------------------	---

Refresh

Copyright © 2006 TRENDnet. All Rights Reserved.

Auto IP

This field contains the current settings of TCP/IP, including DHCP/BOOTP, UPnP, and MAC Rendezvous. The items in this field are configured in **Configuration > Network > TCP/IP**.

Auto IP	
DHCP/BOOTP	Enable (IP : 192.168.1.21)
UPnP	Enable (IP : 192.168.1.21)
MAC Rendezvous	Enable (IP : 169.254.132.253)

TCP/IP Printing

In this field, you can monitor the status of your printing tasks through TCP/IP.

TCP/IP Printing	
LPR Printing	Status : Running Total Print Jobs : 0 Total Print Size : 0 KBytes
Port (9100) Printing	Status : Running Total Print Jobs : 0 Total Print Size : 0 KBytes
IPP Printing	Status : Running Total Print Jobs : 0 Total Print Size : 0 KBytes
FTP Printing	Status : Running Total Print Jobs : 0 Total Print Size : 0 KBytes
E-mail Printing	Status : Running Total Print Jobs : 0 Total Print Size : 0 KBytes

Microsoft Network Printing

In this field, you can monitor the status of your printing tasks through Microsoft Network.

Microsoft Network Printing	
SMB (Over NetBEUI) Printing	Status : Running Total Print Jobs : 0 Total Print Size : 0 KBytes
SMB (Over NBT) Printing	Status : Running Total Print Jobs : 0 Total Print Size : 0 KBytes

MAC AppleTalk Printing

In this field, you can monitor the status of your printing tasks through MAC AppleTalk.

MAC AppleTalk Printing	
AppleTalk Printing	Status : Running Total Print Jobs : 0 Total Print Size : 0 KBytes
	<input type="button" value="Refresh"/>

Status → Active Users

Click the **User** item in the left column to display the user(s) information.



Users Printing Log

The items in this field display the user(s) information, which include the user(s) MAC address, IP address, name, and status of printing tasks.

User's Printing Log				
MAC	IP	Name	Jobs	Size(kBytes)

[Refresh](#)

Configuration

Configuration → System

54Mbps 802.11g Wireless Parallel Print Server
TEW-P1PG

System

System Device

Server Name	<input type="text" value="PS-8B84FD"/>
Location	<input type="text"/>
Admin Contact	<input type="text"/>
Password	New Password: <input type="text"/> Confirm Again: <input type="text"/>

Port Setting

LPT	Port Name : <input type="text" value="PS-8B84FD-P1"/>
	Description : <input type="text"/>
	Speed : <input type="text" value="High"/>
	PUL Printer : <input type="text" value="No"/>

Copyright © 2006 TRENDnet. All Rights Reserved.

System Device

In this field, you can configure the basic information of your print server.

- **Server Name:** Assign a name to the print server.
- **Location** (optional): Assign a location for the print server
- **Admin Contact** (optional): Assign the Admin Contact's name for the print server.

- **Password:** Enter the Administrator password (3-8 characters). To set up the password, please enter the password in the *New Password* box, and then enter the same one again in the *Confirm Again* box.

System Device	
Server Name	<input type="text" value="PS-8B84FD"/>
Location	<input type="text"/>
Admin Contact	<input type="text"/>
Password	New Password: <input type="text"/> Confirm Again: <input type="text"/>

Port Settings

In this field, you can assign the *Port Name* for the print server, and the description for the LPT port. It also allows you to select the **PJL Printer** setting (*Yes* or *No*).

Port Setting	
LPT	Port Name : <input type="text" value="PS-8B84FD-P1"/> Description : <input type="text"/> Speed : <input type="text" value="High"/> PJL Printer : <input type="text" value="No"/>
<input type="button" value="Save"/> <input type="button" value="Cancel"/>	

NOTE: PJL (Print Job Language) has certain job requirements that must be met to work correctly. For more information, please refer to your printer's manual.

Configuration → Wireless

TRENDnet 54Mbps 802.11g Wireless Parallel Print Server
TEW-P1PG

Status
Configuration
• System
• **Wireless**
• Network
• User
• Email
• SHMP

Tools
Help

Wireless

Wireless Interface

Connection Mode
 Infrastructure
 Ad-Hoc

SSID : default (Manually Input or Select from List)
TRENDnet631
Site Survey

Wireless Channel : 11

Transmission Rate : Fully Automatic

Encryption

Disable
 WEP Encryption
Length : 64bits 128bits
Format : ASCII HEX
Key 1 :
Key 2 :
Key 3 :
Key 4 :
Encrypt Data Transmissions Using : Key 1
Authentication Type : Open System Shared Key Both

WPA-PSK
Preshared Key : PSK12345 (8-63 ASCII or 64 HEX characters)

Advanced Setting

Beacon Interval : 100 (ms)
Preamble : Long Short

Save Cancel

Copyright © 2006 TRENDnet. All Rights Reserved.

Wireless Interface

- **Connection Mode:** Select one of the three connection modes.
 - **Infrastructure** (default) - Connects to compatibly configured wireless AP or router in a WLAN.

- **Ad-Hoc** - Connect to compatibly configured wireless clients in the peer-to-peer mode.
- **SSID:** Assign the SSID in this box. You can manually input the name or select one from the pull-down menu. To search the available wireless AP within the network, click the *Site Survey* button.
- **Wireless Channel:** Select the channel from the pull-down menu. The default setting is *11*.
- **Transmission Rate:** Select the data transmit rate from the pull-down menu. The default setting is *Fully Automatic*.

Wireless Interface	
Connection Mode	<input checked="" type="radio"/> Infrastructure <input type="radio"/> Ad-Hoc
SSID	<input type="text" value="default"/> (Manually Input or Select from List) <input type="text" value="TRENDnet631"/> <input type="button" value="Site Survey"/>
Wireless Channel:	<input type="text" value="11"/>
Transmission Rate:	<input type="text" value="Fully Automatic"/>

WEP Encryption

This field allows you to configure the settings of data encryption. Please remember that the WEP key must be set before the data encryption is enforced.

- **WEP Encryption:** This option allows you to select *Disable*, *64 bits*, and *128 bits* for the encryption setting.
- **WEP Key Format:** You can decide the network key to be encoded by *ASCII* (ASCII characters) or *HEX* (hexadecimal digitals).

Then, enter the key(s) for the network in the **Key** box (1~4).

Encryption

Disable

WEP Encryption

Length : 64bits 128bits

Format : ASCII HEX

Key 1 :

Key 2 :

Key 3 :

Key 4 :

Encrypt Data Transmissions Using :

Authentication Type : Open System Shared Key Both

WPA-PSK

Preshared Key : (8-63 ASCII or 64 HEX characters)

Advanced Setting

This field allows you to configure more settings, including:

- **Beacon Interval:** Enter the number of beacon interval time in millisecond.
- **Preamble:** This option allows you to set the length of preamble. Setting options are: **Long** - it is set to 144 bits; **Short** - it is set to 72 bits.
- **Authentication Type:** You can set the authentication type by selecting the settings: **Open System**, **Shared Key**, and **Both**.

Advanced Setting

Beacon Interval (ms)

Preamble: Long Short

TIP: Once you have changed the settings in each option, click **Save** to store the settings, or **Cancel** to abandon.

Configuration → Network

TRENDnet 54Mbps 802.11g Wireless Parallel Print Server
TEW-P1PG

Status

Configuration

- System
- Wireless
- Network
- User
- Email
- SNMP

Tools

Help

Network

TCP/IP

IP Address Manually Assign
IP Address : 192.168.1.121
Subnet Mask : 255.255.255.0
Default Gateway : 0.0.0.0
 Automatically Assign

DNS Server Address
1. 0.0.0.0
2. 0.0.0.0

UPnP Enable Disable

MAC Rendezvous Enable Disable

Second HTTP Port Enable Disable
Port Number : 0
(For Remote Web Configuration and IPP Printing)

Microsoft Network

Workgroup WORKGROUP

AppleTalk

AppleTalk Zone *

LPT
Chooser Name : PS-8B84FD-P1
Printer Type : LaserWriter
PostScript Level : Level 2
Font Group : Standard 35

Copyright © 2006 TRENDnet. All Rights Reserved.

TCP/IP

This field contains three options that allow you to configure the TCP/IP setting: **IP Address**, **UPnP**, and **MAC Rendezvous**.

- **IP Address:** This option allows you to set the IP address manually or automatically. When you choose *Manually Assign*, you should enter the related information in the following boxes, including *IP Address*, *Subnet Mask*, and *Default Gateway*.
- **DNS Server Address:** DNS (Domain Name System) server is an Internet service that translates domain names into IP addresses. Enter at least one DNS IP Address in this field.
- **UPnP:** This option allows you to enable or disable UPnP mode.
- **MAC Rendezvous:** This option allows you to enable or disable MAC Rendezvous mode.
- **Second HTTP Port:** The default port for communication is via port 80, and you can change it according to your network configuration. Select *Enable* from the option and enter the desired port number in the following box.

TCP/IP	
IP Address	<input type="radio"/> Manually Assign IP Address : <input type="text" value="192.168.1.121"/> Subnet Mask : <input type="text" value="255.255.255.0"/> Default Gateway : <input type="text" value="0.0.0.0"/> <input checked="" type="radio"/> Automatically Assign
DNS Server Address	1. <input type="text" value="0.0.0.0"/> 2. <input type="text" value="0.0.0.0"/>
UPnP	<input checked="" type="radio"/> Enable <input type="radio"/> Disable
MAC Rendezvous	<input checked="" type="radio"/> Enable <input type="radio"/> Disable
Second HTTP Port	<input type="radio"/> Enable <input checked="" type="radio"/> Disable Port Number : <input type="text" value="0"/> (For Remote Web Configuration and IPP Printing)

Microsoft Network

Enter the name of the Workgroup that you want the print server associated with in this field.

Microsoft Network	
Workgroup	<input type="text" value="WORKGROUP"/>

AppleTalk

Enter the AppleTalk Zone name in the box. In the following options, enter the related configuration, such as the printer type.

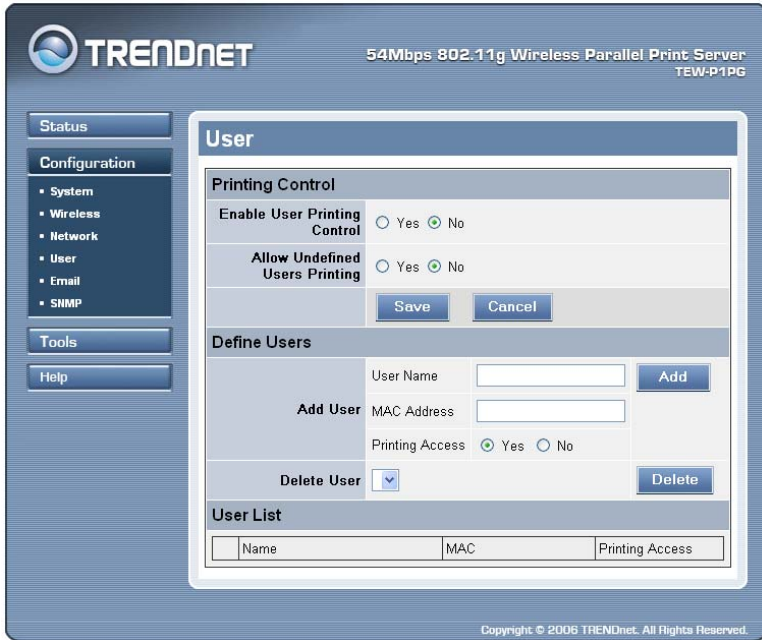
- **LPT**

- **Chooser Name:** Display the print server's Port name.
- **Printer Type:** Enter the printer's type in this box.
- **PostScript Level:** Select from the pull-down menu (*Level 1* or *Level 2*).
- **Font Group:** Select from the pull-down menu.

AppleTalk	
AppleTalk Zone	*
LPT	Chooser Name : PS-8BB4FD-P1 Printer Type : LaserWriter PostScript Level : Level 2 Font Group : Standard 35
<input type="button" value="Save"/> <input type="button" value="Cancel"/>	

TIP: Once you have changed the settings in each option, click *Save* to store the settings, or *Cancel* to abandon.

Configuration → User



Printing Control

By configuring the **Enable User Printing Control** option (*Yes* or *No*), the user in the User List is permitted to access the print server or not. For the user(s) who is not in the User List, you can also limit the access right by setting the **Allow Undefined Users Printing** option to *Yes* or *No*.

Printing Control	
Enable User Printing Control	<input type="radio"/> Yes <input checked="" type="radio"/> No
Allow Undefined Users Printing	<input type="radio"/> Yes <input checked="" type="radio"/> No
<input type="button" value="Save"/> <input type="button" value="Cancel"/>	

Define Users

You can add/delete the user(s) to/from the User List. The User List at the bottom of the screen displays the current defined user and related information for the print server.

Define Users		
Add User	User Name	<input type="text"/> <input type="button" value="Add"/>
	MAC Address	<input type="text"/>
	Printing Access	<input checked="" type="radio"/> Yes <input type="radio"/> No
Delete User	<input type="button" value="v"/>	<input type="button" value="Delete"/>

TIP: Once you have changed the settings in each option, click *Save* to store the settings, or *Cancel* to abandon.

Configuration → E-mail

The screenshot shows the configuration interface for a TRENDnet 54Mbps 802.11g Wireless Parallel Print Server (TEW-P1PG). The interface is divided into a left sidebar and a main content area. The sidebar contains navigation buttons for Status, Configuration, Tools, and Help. The Configuration section is expanded, showing a list of sub-sections: System, Wireless, Network, User, Email, and SNMP. The main content area is titled 'Email' and contains three sections: 'E-mail Account', 'E-mail Notification', and 'E-mail Printing'. Each section has several input fields and radio buttons for configuration.

E-mail Account	
Print Server E-mail Address	<input type="text"/>
Incoming E-mail (POP3) Server Address	<input type="text"/>
Outgoing E-mail (SMTP) Server Address	<input type="text"/>
Account Name	<input type="text"/>
Password	<input type="text"/>

E-mail Notification	
Enable	<input type="radio"/> Yes <input checked="" type="radio"/> No
Enable e-mail notification for printer status changing. Notification e-mail will be sent to Admin's e-mail address.	
Admin E-mail Address	<input type="text"/>
(Use ';' to separate multiple e-mail address)	

E-mail Printing	
E-mail Printing (ASCII Text Only)	<input type="radio"/> Enable <input checked="" type="radio"/> Disable
Receive E-mail Interval	<input type="text" value="15"/> (minutes)

Copyright © 2006 TRENDnet. All Rights Reserved.

E-mail Account

You can assign an E-mail address to the print server, so that your mail of the account can be printed out directly through the printer (ASCII text only). To enable this function, enter the E-mail account in the **Print Server E-mail Address** box.

- **Incoming E-mail (POP3) Server Address:** Enter the server address that is used to receive your E-mail in this box.
- **Outgoing E-mail (SMTP) Server Address:** Enter the server address that is used to send your E-mail in this box.

If your mail server needs to verify the user when sending E-mail, you have to input the **Account Name** and **Password**.

E-mail Account	
Print Server E-mail Address	<input type="text"/>
Incoming E-mail (POP3) Server Address	<input type="text"/>
Outgoing E-mail (SMTP) Server Address	<input type="text"/>
Account Name	<input type="text"/>
Password	<input type="text"/>

E-mail Notification

You can set the print server to send an alter message when the printer status changes through E-mail. To enable this function, set the **Enable e-mail notification for printer status changing** option to **Yes**. Then, input the administrator's E-mail address in the **Admin E-mail Address** box.

E-mail Notification	
Enable	<input type="radio"/> Yes <input checked="" type="radio"/> No
Enable e-mail notification for printer status changing. Notification e-mail will be sent to Admin's e-mail address.	
Admin E-mail Address	<input type="text"/>
(Use ';' to separate multiple e-mail address)	

E-mail Printing

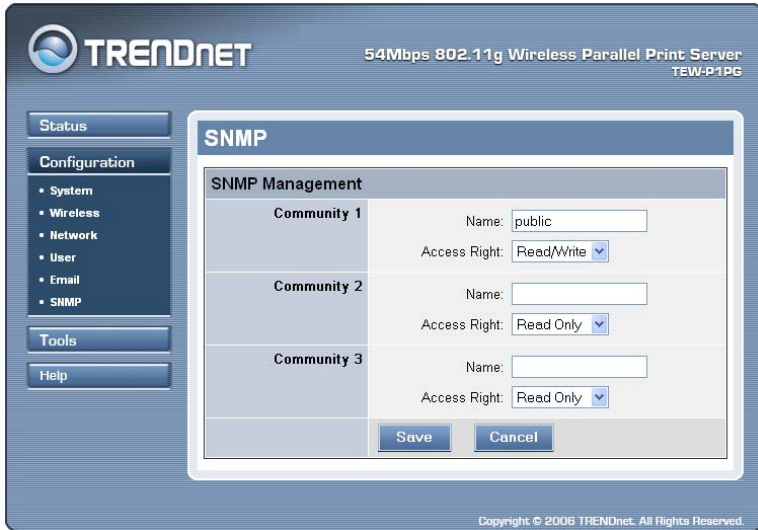
- **E-mail Printing (ASCII Text Only):** Select *Enable* to enable the E-mail printing function.

- **Receive E-mail Interval:** Enter the number in this box to set up the time (in minute) to check/receive E-mail regularly.

E-mail Printing	
E-mail Printing (ASCII Text Only)	<input type="radio"/> Enable <input checked="" type="radio"/> Disable
Receive E-mail Interval	<input type="text" value="15"/> (minutes)
<input type="button" value="Save"/> <input type="button" value="Cancel"/>	

TIP: Once you have changed the settings in each option, click *Save* to store the settings, or *Cancel* to abandon.

Configuration → SNMP



SNMP Management

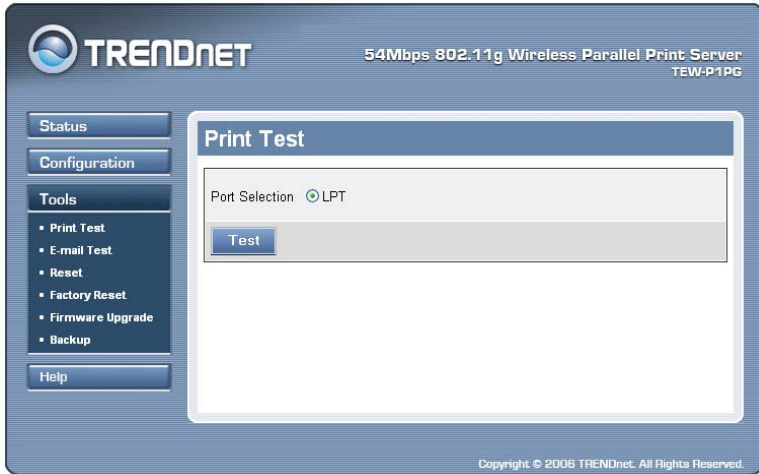
SNMP (Simple Network Management Protocol) is a set of protocols for managing complex networks

- **Community 1/2/3:** Enter a name in the **Name** box, and configure the **Access Right** by selecting **Read Only** or **Read/Write** from the pull-down menu.

TIP: Once you have changed the settings in each option, click **Save** to store the settings, or **Cancel** to abandon.

Tools

Tool → Print Test

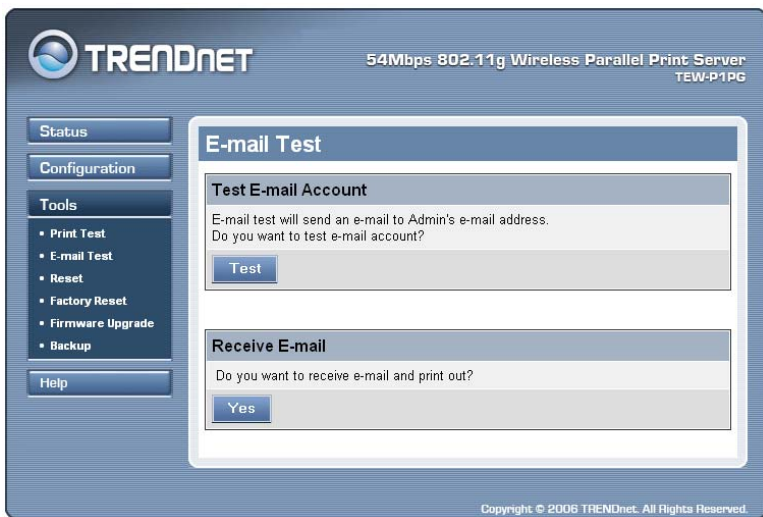


Print Test

Click *Test* to print a test page.

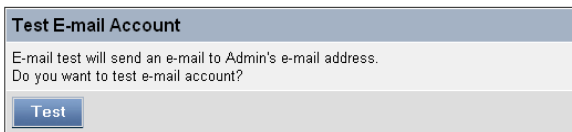


Tool → E-mail



Test E-mail Account

Click *Test* to send a test E-mail to the given administrator's E-mail address.



Receive E-mail

Click *Yes* to immediately check and receive E-mail, and then print out the mail when available.

Receive E-mail

Do you want to receive e-mail and print out?

Yes

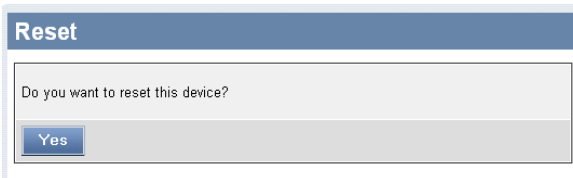
Tool → Reset



The screenshot shows the TRENDnet web interface for a 54Mbps 802.11g Wireless Parallel Print Server (TEW-P1PG). The interface includes a navigation menu on the left with options: Status, Configuration, Tools, and Help. The Tools menu is expanded, showing sub-options: Print Test, E-mail Test, Reset, Factory Reset, Firmware Upgrade, and Backup. The main content area displays a 'Reset' dialog box with the question 'Do you want to reset this device?' and a 'Yes' button. The TRENDnet logo is in the top left, and the device model and copyright information are in the top right.

Reset

Click *Yes* to immediately reset the print server.



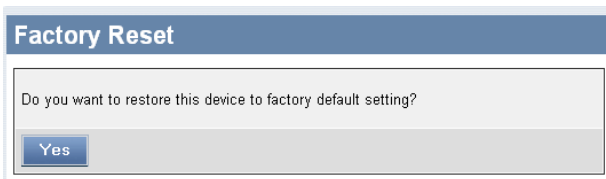
This is a close-up of the 'Reset' dialog box. It features a blue header with the word 'Reset' and a light gray background. The text 'Do you want to reset this device?' is centered. Below the text is a blue button with the word 'Yes' in white.

Tool → Factory Reset

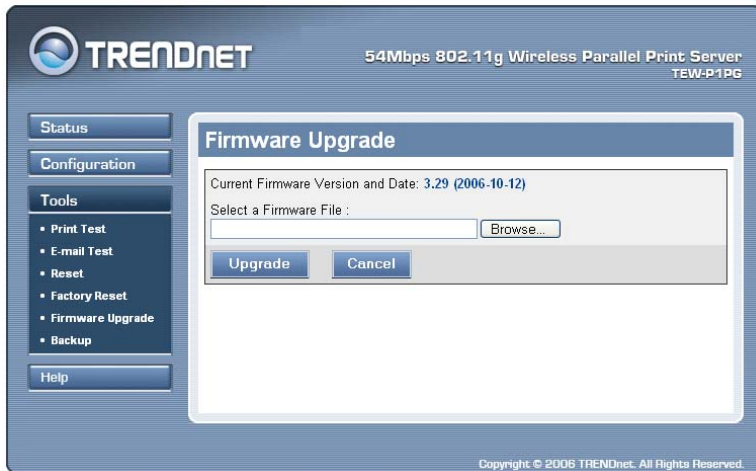


Factory Reset

Click *Yes* to reload the factory settings of the print server.



Tool → Firmware Upgrade



Firmware Upgrade

When a new version of firmware is available (e.g. downloading from the manufacturer's website), you can upgrade the firmware of your print server. Click *Browse...* to point to the firmware file, and then click *Upgrade*.

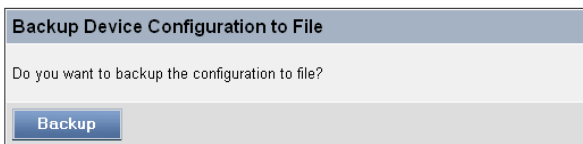


Tool → Backup



Backup Device Configuration to File

Click *Backup* to backup your current configuration of the print server to file and then save in the computer.



Restore Device Configuration from File

You can reload a configuration that you saved before. Click *Browse...* to point to the backup file, and then click *Restore*.

Restore Device Configuration from File

Select a Configuration File :

Restore

Cancel

Help

About



TRENDnet 54Mbps 802.11g Wireless Parallel Print Server
TEW-P1PG

Status
Configuration
Tools
Help
• About

About

Print Server v3.29

Copyright © 2006 TRENDnet. All Rights Reserved.

This screen displays the information of the print server.

PRINTING IN WINDOWS 95/98/ME

The Print Server can provide print services to TCP/IP networks using the lpr/lpd network printing protocol. Most UNIX systems are capable of supporting lpd, as is Windows NT/2000.

This LPR for TCP/IP Printing client gives Windows 95/98/Me workstations the ability to print using the lpr/lpd printing protocol. Though it is possible to print to Print Servers from Windows 95/98/Me, this capability is useful if primarily administer your network from UNIX systems, or if you want to print from workstations that are only accessible through IP routing.

Installing the LPR for TCP/IP Printing Client

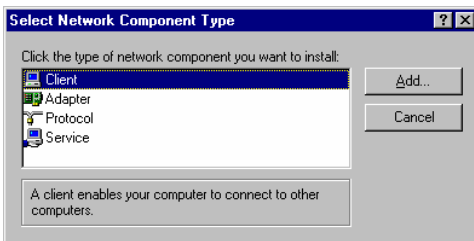
Before your Windows 95/98/Me workstation can print using the LPR protocol, you will need to install the client program, as follows:

1. Make sure that you have installed the TCP/IP protocol, and have properly configured the Windows 95/98/Me TCP/IP settings. You can install the protocol from the Network control panel if necessary.
2. From the **Start** menu, choose the **Settings** submenu, then the **Control Panel** item within it. Windows will display the Control Panel folder.
3. Double-click on the Network icon in the Control Panel folder.



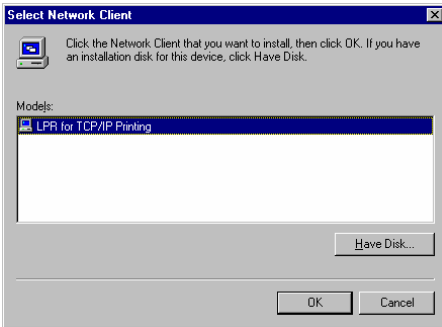
Network

4. Click on the **Add...** button on the **Configuration** tab.
5. Windows will ask for the type of component to add. Select Client and click **Add...** to continue.

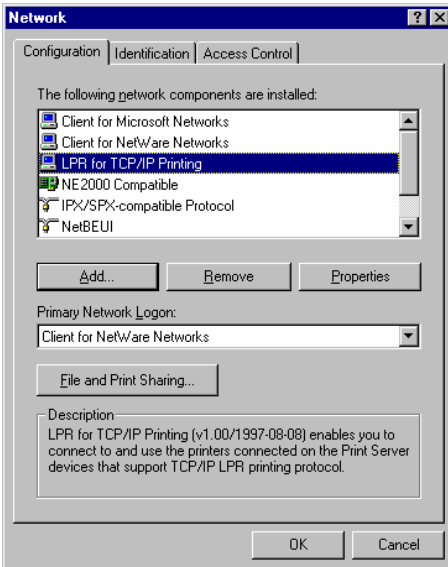


6. When Windows asks you to select a network client, click the **Have Disk...** button.

7. Insert the Print Server installation CD in your computer's CD-ROM, enter the proper pathname (for example , D:\ lpr), and click **OK**.
8. Select the LPR for TCP/IP Printing client and click **OK**.



9. Windows will copy the necessary files, and return to the Network dialog. Click **OK** to let Windows restart.



Adding LPR Printer Ports

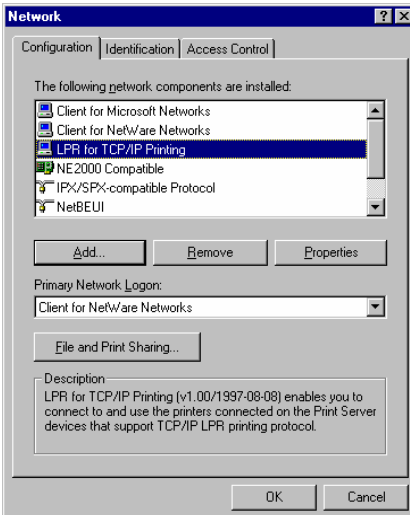
Once you have installed the client, and have enabled TCP/IP printing for the Print Servers, then you need to add a printer port for each printer you will be printing to using the lpr/lpd protocol. To add a printer port,

1. From the **Start** menu, choose the **Settings** submenu, then the **Control Panel** item within it. Windows will display the Control Panel folder.
2. Double-click on the **Network** icon in the Control Panel folder.



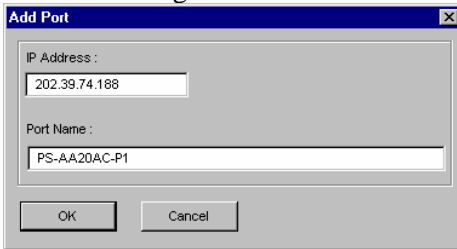
Network

3. Choose the LPR for TCP/IP Printing client and click the **Properties** button.

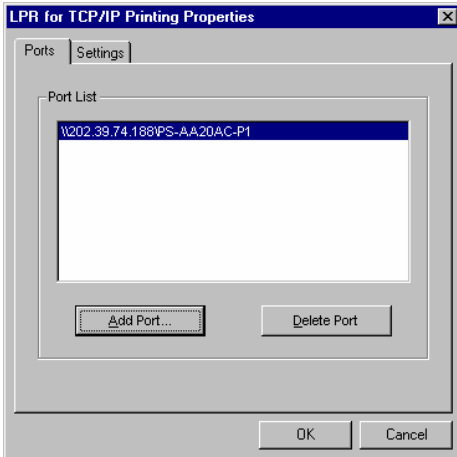


4. Click the **Add Port...** button to add a new lpd-accessible printer port.
5. Enter the IP address of the Print Server and the name of the printer port that you will be printing to, then press OK.

Hint: You can get the Port name from the print server's system information through web browser. Please refer page 21.



6. Click **OK** to leave the LPR for TCP/IP Printing Properties window.



Printing from Windows 95/98/Me

After you have added the necessary printer ports, you can add a printer device for printing to the port. To enable printing to an lpr-accessible printer port from Windows 95/98/Me,

1. From the Start menu, choose the Settings submenu, then the Printers item within it. Windows will display the Printers folder.
2. Double-click on the Add Printer icon in the Printers folder.

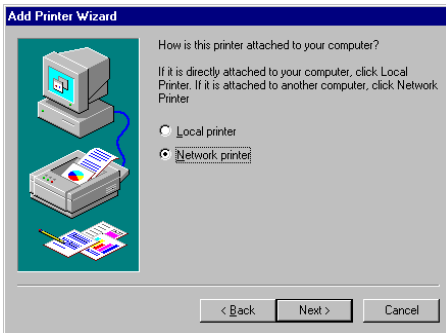


Windows will start the Add Printer Wizard.



Click the **Next >** button to continue to the next screen.

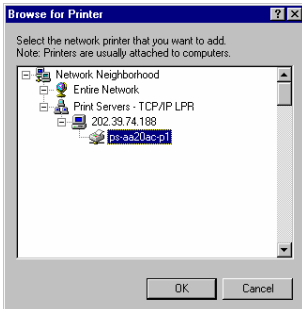
3. Choose the **Network Printer** selection and click the **Next >** button to continue.



4. Enter the name of the port, as displayed in the LPR for TCP/IP Printing Port List.



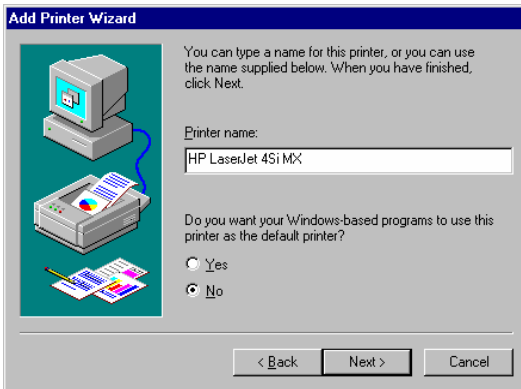
Alternatively, you can click **Browse...** and locate the printer port. TCP/IP printing ports are located under the Entire Network icon, within the Print Servers - TCP/IP LPR icon.



Press **OK** when you have located the proper printer port.

Click **Next >** to continue to the next step.

5. At this point Windows will ask you to choose the correct printer driver for the printer. Choose your printer's make and model from the list, or use the driver disk included with the printer. When you have chosen the correct printer, click **Next >** to continue.
6. Windows will then ask for a name for the new printer, and ask whether or not you want to set the printer as the Windows default printer. Click **Finish** (or **Next >**) to continue.



7. Windows may ask you whether or not you wish to print a test page to make sure that the printer will work correctly. When the test page is done printing, you will be asked whether or not the test page printed.

Setting TCP/IP Printing Settings

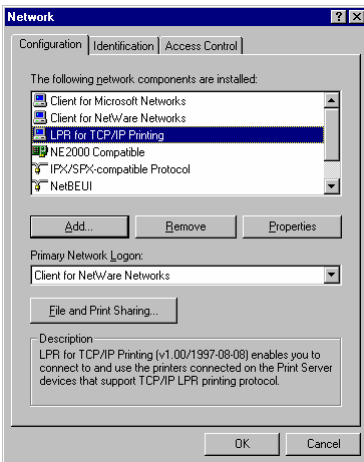
The lpr client's Properties dialog allows you to change several of the client's settings. To change these settings,

1. From the **Start** menu, choose the **Settings** submenu, then the **Control Panel** item within it. Windows will display the Control Panel folder.
2. Double-click on the **Network** icon in the Control Panel folder.

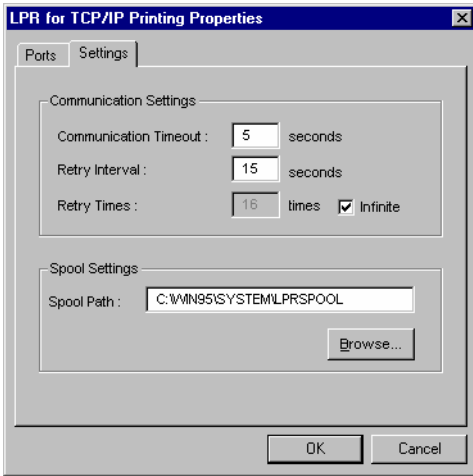


Network

3. Choose the LPR for TCP/IP Printing client and click the **Properties** button.



4. Click on the Settings tab to access the lpr client settings. Change the settings as necessary, and press **OK** to let the changes take effect.



The parameters are as follows:

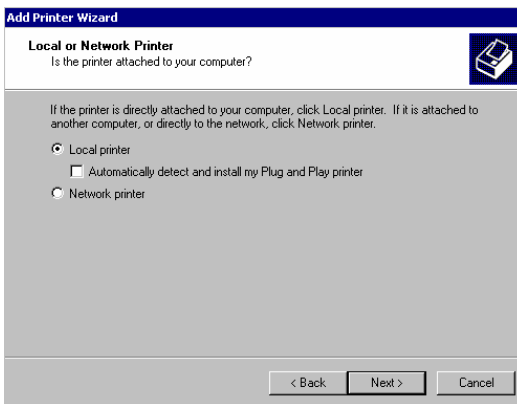
- ◆ **Communication Timeout** Determines how long, in seconds, the system will wait before determining that it has lost connection with lpr/lpd print servers.
- ◆ **Retry Interval** Determines how long, in seconds, the system will wait before retrying a lost connection.
- ◆ **Retry Times** Determines how many times the system will retry a lost connection with an lpr/lpd print server. If **Infinite** is checked, it will retry indefinitely.
- ◆ **Spool Path** Gives the directory path where the system will temporarily store lpr/lpd print server job files.

PRINTING IN WINDOWS 2000/XP

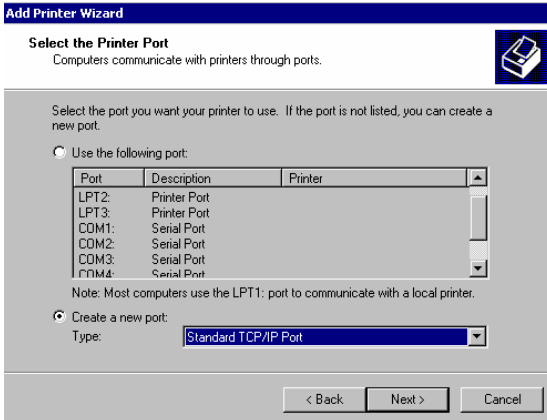
Setting Up Windows 2000 TCP/IP Printing

Following is the correct procedure for setting up TCP/IP LPR printing under Windows 2000.

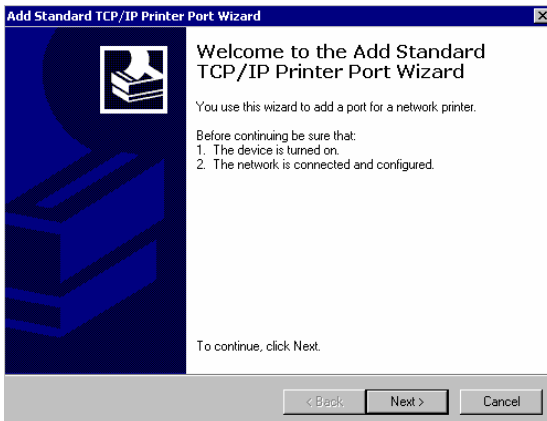
Click **Start > Settings > Printers**.
Double Click **“Add Printer”**
Select **“Local Printer”**



Create a new “Standard TCP/IP Port”

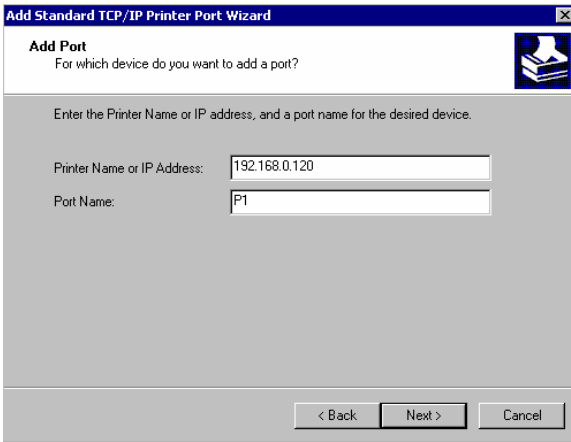


Click “Next”

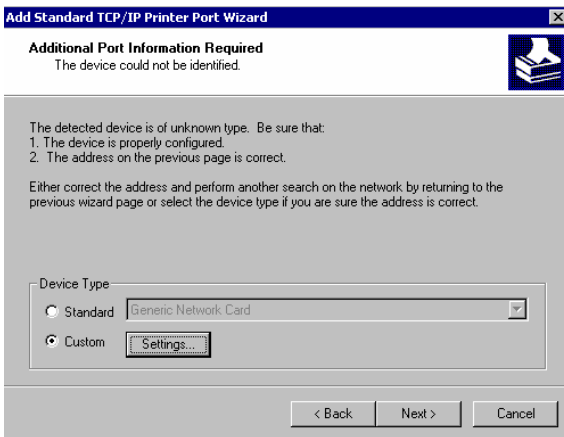


Input the IP Address of the Print Server, and the Port name of the Port that will be printed to, then click “Next”.

Hint: You can get the Port name from the print server’s system information through web browser. Please refer page 21.



Select “Custom”, and click “Settings”.



Select “LPR”, and put the Port name in the field labeled “Queue Name”. Then Click “OK”.

Configure Standard TCP/IP Port Monitor

Port Settings

Port Name: P1

Printer Name or IP Address: 192.168.0.120

Protocol

Raw LPR

Raw Settings

Port Number: 9100

LPR Settings

Queue Name: P1

LPR Byte Counting Enabled

SNMP Status Enabled

Community Name: public

SNMP Device Index: 1

OK Cancel

Click “Next”.

Add Standard TCP/IP Printer Port Wizard

Additional Port Information Required
The device could not be identified.

The detected device is of unknown type. Be sure that:

1. The device is properly configured.
2. The address on the previous page is correct.

Either correct the address and perform another search on the network by returning to the previous wizard page or select the device type if you are sure the address is correct.

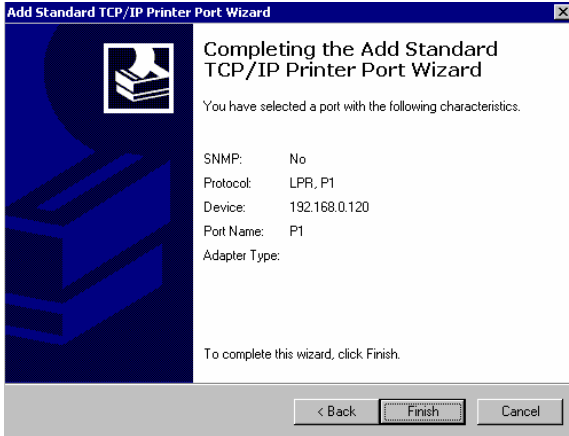
Device Type

Standard Generic Network Card

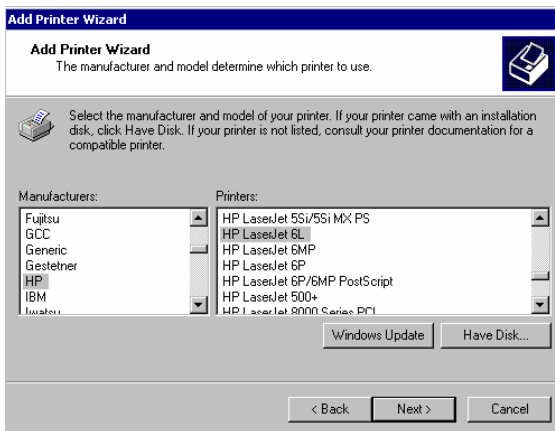
Custom Settings...

< Back Next > Cancel

Click **“Finish”**



The Printer Install Wizard will now prompt for drivers. Select the correct **Brand** and **Model**, or click **“Have Disk”**, to provide the **Manufacturer’s Driver Disk**.



Click “Next”.

Add Printer Wizard

Use Existing Driver
A driver is already installed for this printer. You can use or replace the existing driver.



HP LaserJet 6L

Do you want to keep the existing driver or use the new one?

Keep existing driver (recommended)


Replace existing driver

< Back Next > Cancel

Select a “Printer Name”.

Add Printer Wizard

Name Your Printer
You must assign a name for this printer.



Supply a name for this printer. Some programs do not support server and printer name combinations of more than 31 characters.

Printer name:

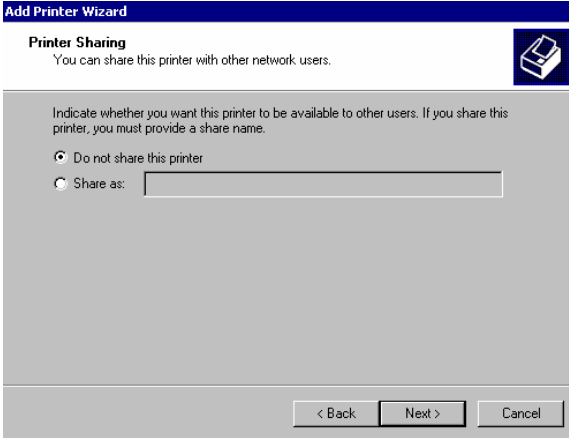
Do you want your Windows-based programs to use this printer as the default printer?

Yes

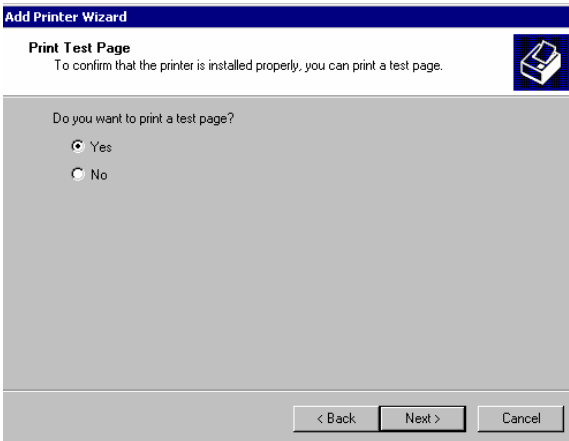
No

< Back Next > Cancel

Sharing can be enabled here.



Also, a Test Page can be printed to confirm proper configuration.



When the Test Page has been printed, click “**Finish**” to complete the installation.



Setting Up Windows XP TCP/IP Printing

Following is the correct procedure for setting up TCP/IP LPR printing under Windows XP.

Click Start > **Printer and Faxes**

Double Click “**Add a Printer**”

Click “**Next**”



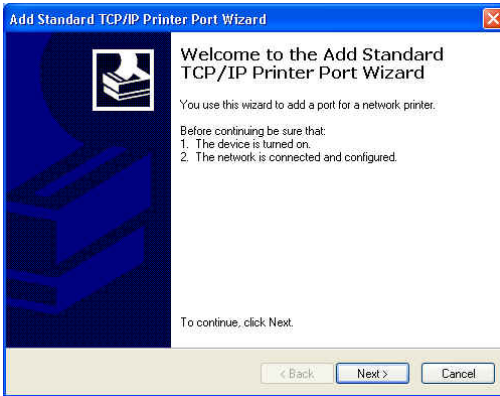
Select “Local Printer”



Create a new “Standard TCP/IP Port”



Click “Next”

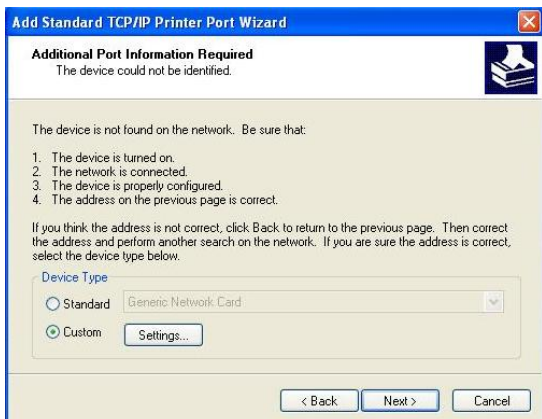


Input the IP Address of the Print Server, and the Port name of the Port that will be printed to, then click “Next”.

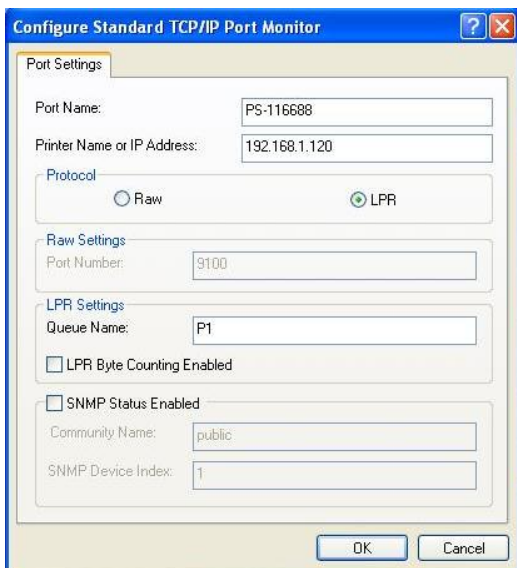
Hint: You can get the Port name from the print server’s system information through web browser. Please refer page 21.



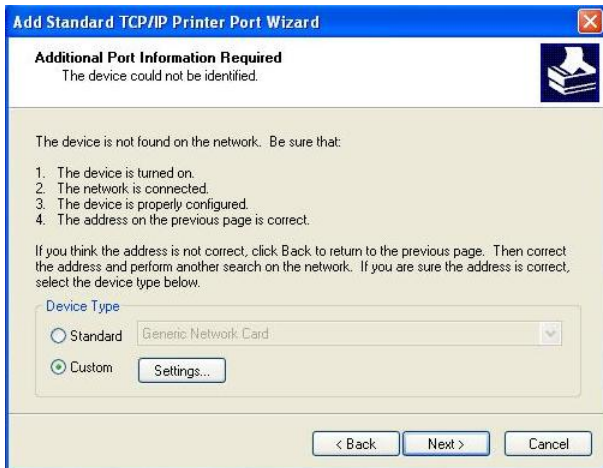
Select “**Custom**”, and click “**Settings**”.



Select “**LPR**”, and put the Port name in the field labeled “**Queue Name**”. Then Click “**OK**”.



Click **“Next”**.



Click **“Finish”**



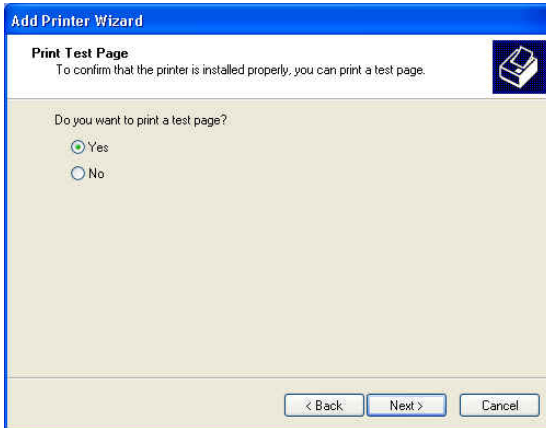
The Printer Install Wizard will now prompt for drivers. Select the correct Make and Model, or click “**Have Disk**”, to provide the Manufacturer’s Driver Disk.
Click “**Next**”.



Select a “**Printer Name**”.



A Test Page can be printed to confirm proper configuration.



When the test page has been printed, click “**Finish**” to complete the installation.



PRINTING IN MAC OS

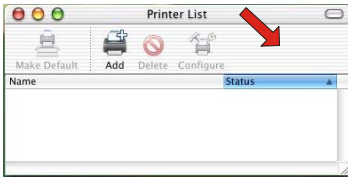
Rendezvous Uses in MAC OS 10.2

The latest version of MAC OS provides a new feature that is called **Rendezvous**. Rendezvous is a revolutionary networking technology standard that lets you create an instant network of computers and devices, which can be used throughout Mac OS 10.2 to provide innovative ways to share files and printers and even contact other people on the network.

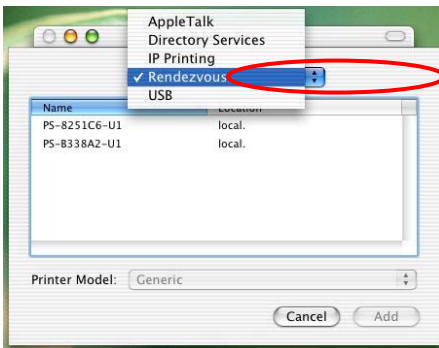
For the printer connection, the Mac OS 10.2 Print Center application uses Rendezvous to discover Rendezvous-enabled printers on the network. When you add your computer to a network, Print Center automatically discovers the available printers. All you have to do is selecting the one you want to use and then start printing. You can add a new printer to the network and all the users on the network will see the new printer automatically appear in their Print Center, without any configuration.

The following instructions provide a common procedure of installing the printer:

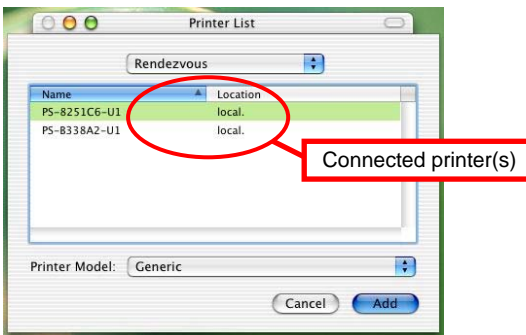
1. Launch Print Center. Press and hold the Option key, click the **Add** button.



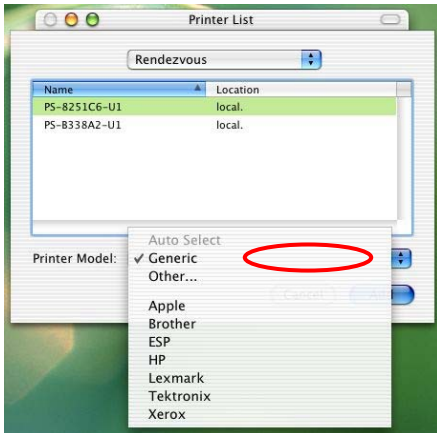
2. Select **Rendezvous** from the pop-up menu.



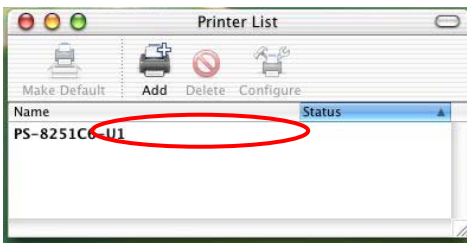
3. When clicking the **Rendezvous** item, the following window appears to display the connected Rendezvous-enabled printers.



4. Select the desired printer, and the following pop-up menu displays the printer's manufacturer. Select **Generic**.



5. The printer is installed into the system successfully.

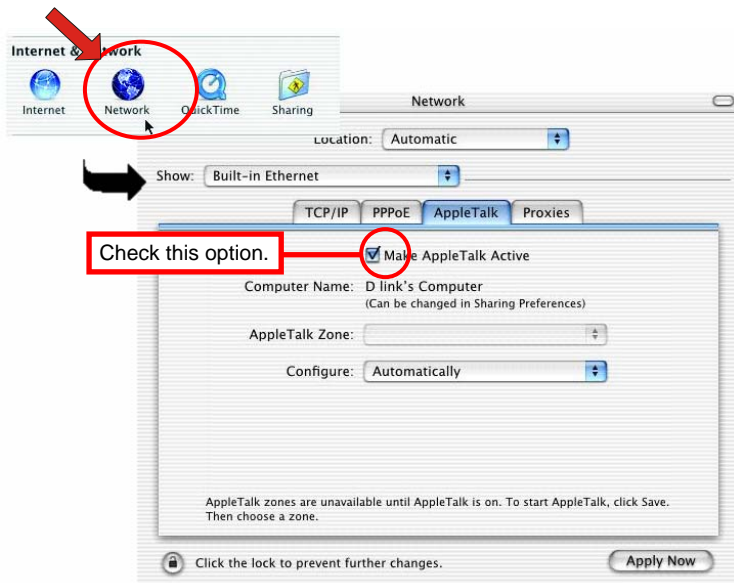


Setting Up Apple Talk/LPR Printing

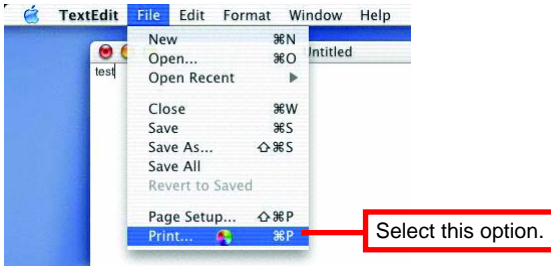
For MAC OS X User

With MAC OS X, you can use AppleTalk or LPR printers to print through the print server. Follow the instructions below for setting up the print server:

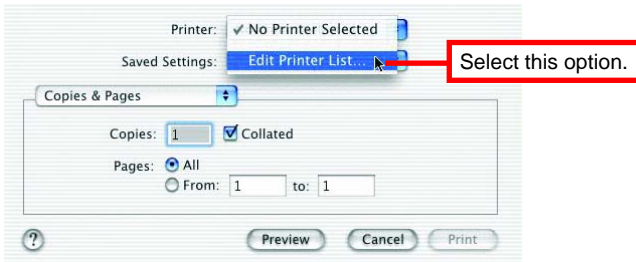
1. After attaching the print server to your network, change the IP Address of your Macintosh computer to access the print server's web configuration. The default I P Address of the print server is **192.168.0.1**. Change your IP Address to **102.168.0.x**, where **x** is any number between 2 and 254.
2. Open the **System Preference** window and click **Network**. In the Network window, select the **AppleTalk** tab and check the **Make AppleTalk Active** option.



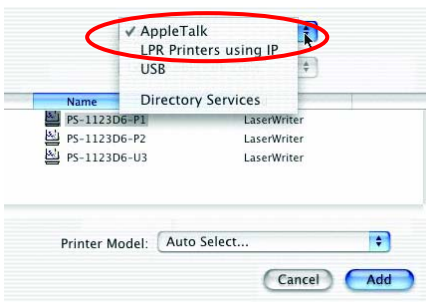
3. To print, open a document and select **File > Print** from the menu.



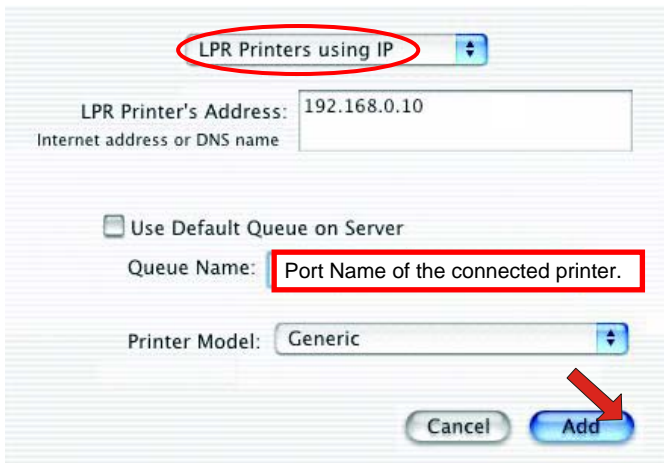
4. Select **Edit Printer List** from the **Printer** dialog box.



5. Click **Add Printer**. Then, select the desired printing protocol (*AppleTalk* or *LPR Printers using IP*).



- **AppleTalk:** After selecting **AppleTalk**, the Port Name of the print server will be displayed. Select the Port to which the post-script printer is connected. Then, select the printer model from the dialog box. Click **Add Printer** to complete the Printer Port configuration. Select the Printer Port just configured in the Print window. Click **Print** to print your document.
- **LPR Printers using IP:** When you select **LPR Printers using IP** Protocol, type the IP Address of the print server into the **LPR Printer's Address** field of the following window. In the **Queue Name** field, type in the Port Name of the post-script printer that is connected to the Print Server. Select the printer model from the dialog box, and select the printer model from the pull-down menu. Click **Add** to complete the process. Close all Print Center windows and select the Printer Port that was just selected. Then, click **Print** to print the document.



For MAC OS 9 User

If you use MAC OS 9, you can use the AppleTalk network protocol for network communications over standard Ethernet or Fast Ethernet using the EtherTalk transport, or over a proprietary low-speed LocalTalk transport. Your print server can be used for network printing to PostScript printers. You can print from any MAC OS computer connected to your Ethernet network, either directly using an EtherTalk connection or indirectly through a LocalTalk-to-EtherTalk router.

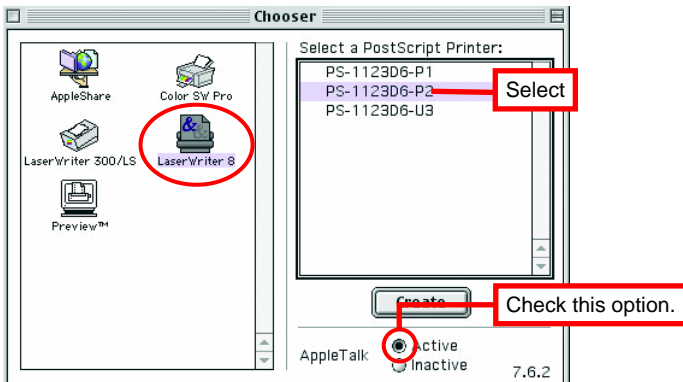
To set up the print server to be used for AppleTalk printing:

1. Please confirm that the AppleTalk protocol is enabled in your Macintosh computer.
2. Change the IP Address on one of the computers within your network to ***192.168.0.x*** (where *x* is any number between 2-254).
3. Type ***192.168.0.1*** (the default IP Address) into the address field of your browser.
4. Select the **Network** tab and scroll to the AppleTalk protocol section.
5. If your AppleTalk network is divided into AppleTalk zones, you have to specify which zone the Print Server should be in. You should locate the print server in the same zone as most of the users who will be using it. If your network is not divided into zones, it should contain a single asterisk “*”.

To print from MAC OS Client Workstations:

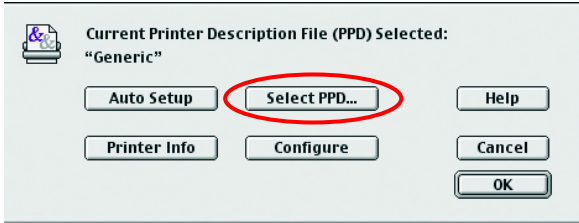
The actual settings of selecting a PostScript printer connected to your print server may be different from the instructions provided in this section, depending on the devices and the software you are using.

1. To choose a printer connected to your print server as your MAC OS workstation's default printer, select **Chooser** from the Apple menu.
2. In the left column of **Chooser** window, select the desired item. Please confirm that AppleTalk is set to *Active*. A list of all networked PostScript printers will be displayed within the right column.

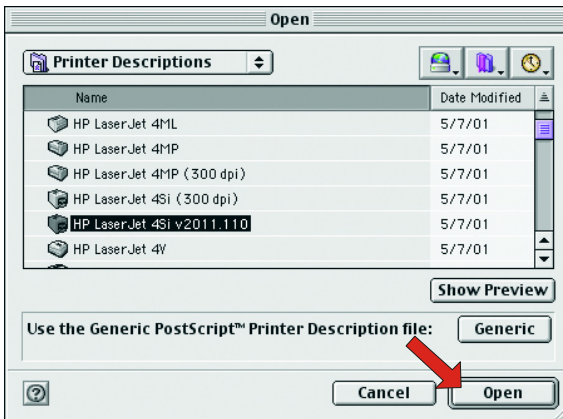


3. Double-click the name of the **Printer Port** you wish to use. The **Printer Ports** shown are examples only.

4. If you have not previously set this printer as the default, your computer will prompt you for a PostScript Printer Description file. Choose **Select PPD**.



5. Select the appropriate printer description file for your printer. Click **Open**. (If your printer is not listed, click **Generic** to use a generic printer description.)



The selected printer will become your computer's default printer. You may need to choose **Page Setup** in any applications you have open.

Limited Warranty

TRENDnet warrants its products against defects in material and workmanship, under normal use and service, for the following lengths of time from the date of purchase.

TEW-P1PG Wireless Print Server – 3 Years Warranty

If a product does not operate as warranted above during the applicable warranty period, TRENDnet shall, at its option and expense, repair the defective product or part, deliver to customer an equivalent product or part to replace the defective item, or refund to customer the purchase price paid for the defective product. All products that are replaced will become the property of TRENDnet. Replacement products may be new or reconditioned.

TRENDnet shall not be responsible for any software, firmware, information, or memory data of customer contained in, stored on, or integrated with any products returned to TRENDnet pursuant to any warranty.

There are no user serviceable parts inside the product. Do not remove or attempt to service the product by any unauthorized service center. This warranty is voided if (i) the product has been modified or repaired by any unauthorized service center, (ii) the product was subject to accident, abuse, or improper use (iii) the product was subject to conditions more severe than those specified in the manual.

Warranty service may be obtained by contacting TRENDnet office within the applicable warranty period for a Return Material Authorization (RMA) number, accompanied by a copy of the dated proof of the purchase. Products returned to TRENDnet must be pre-authorized by TRENDnet with RMA number marked on the outside of the package, and sent prepaid, insured and packaged appropriately for safe shipment.

WARRANTIES EXCLUSIVE: IF THE TRENDNET PRODUCT DOES NOT OPERATE AS WARRANTED ABOVE, THE CUSTOMER'S SOLE REMEDY SHALL BE, AT TRENDNET'S OPTION, REPAIR OR REPLACEMENT. THE FOREGOING WARRANTIES AND REMEDIES ARE EXCLUSIVE AND ARE IN LIEU OF ALL OTHER WARRANTIES, EXPRESSED OR IMPLIED, EITHER IN FACT OR BY OPERATION OF LAW, STATUTORY OR OTHERWISE, INCLUDING WARRANTIES OF MERCHANTABILITY AND FITNESS FOR A PARTICULAR PURPOSE. TRENDNET NEITHER ASSUMES NOR AUTHORIZES ANY OTHER PERSON TO ASSUME FOR IT ANY OTHER LIABILITY IN CONNECTION WITH THE SALE, INSTALLATION MAINTENANCE OR USE OF TRENDNET'S PRODUCTS.

TRENDNET SHALL NOT BE LIABLE UNDER THIS WARRANTY IF ITS TESTING AND EXAMINATION DISCLOSE THAT THE ALLEGED DEFECT IN THE PRODUCT DOES NOT EXIST OR WAS CAUSED BY CUSTOMER'S OR ANY THIRD PERSON'S MISUSE, NEGLIGENCE, IMPROPER INSTALLATION OR TESTING, UNAUTHORIZED ATTEMPTS TO REPAIR OR MODIFY, OR ANY OTHER CAUSE BEYOND THE RANGE OF THE INTENDED USE, OR BY ACCIDENT, FIRE, LIGHTNING, OR OTHER HAZARD.

LIMITATION OF LIABILITY: TO THE FULL EXTENT ALLOWED BY LAW TRENDNET ALSO EXCLUDES FOR ITSELF AND ITS SUPPLIERS ANY LIABILITY, WHETHER BASED IN CONTRACT OR TORT (INCLUDING NEGLIGENCE), FOR INCIDENTAL, CONSEQUENTIAL, INDIRECT, SPECIAL, OR PUNITIVE DAMAGES OF ANY KIND, OR FOR LOSS OF REVENUE OR PROFITS, LOSS OF BUSINESS, LOSS OF INFORMATION OR DATA, OR OTHER FINANCIAL LOSS ARISING OUT OF OR IN CONNECTION WITH THE SALE, INSTALLATION, MAINTENANCE, USE, PERFORMANCE, FAILURE, OR INTERRUPTION OF THE POSSIBILITY OF SUCH DAMAGES, AND LIMITS ITS LIABILITY TO REPAIR, REPLACEMENT, OR REFUND OF THE PURCHASE PRICE PAID, AT TRENDNET'S OPTION. THIS DISCLAIMER OF LIABILITY FOR DAMAGES WILL NOT BE AFFECTED IF ANY REMEDY PROVIDED HEREIN SHALL FAIL OF ITS ESSENTIAL PURPOSE.

Governing Law: This Limited Warranty shall be governed by the laws of the state of California.

AC/DC Power Adapter, Cooling Fan, and Power Supply carry - 1 Year Warranty



TRENDnet

TRENDnet Technical Support

US • Canada

Toll Free Telephone: 1(866) 845-3673

24/7 Tech Support



Europe (Germany • France • Italy • Spain • Switzerland • UK)

Toll Free Telephone: +00800 60 76 76 67

English/Espanol - 24/7

Francais/Deutsch - 11am-8pm, Monday - Friday MET

Worldwide

Telephone: +(31) (0) 20 504 05 35

English/Espanol - 24/7

Francais/Deutsch - 11am-8pm, Monday - Friday MET

Product Warranty Registration

Please take a moment to register your product online.

Go to TRENDnet's website at <http://www.trendnet.com>

TRENDnet

3135 Kashiwa Street
Torrance, CA 90505
USA