



TRENDNET



User's Guide



TEW-AI750
TEW-AI750B

Table of Contents

English	1
1. Before You Start	1
2. Hardware Installation	3
Troubleshooting	7

1. Before you start

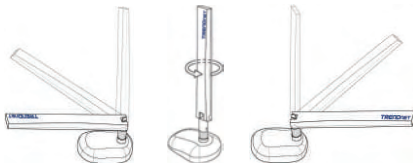


Package Content

- TEW-AI750/TEW-AI750B
- Antenna Mounting Base (TEW-AI750B only)
- User's Guide
- Mounting Kit (TEW-AI750B only)

Product details

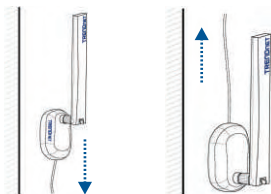
The Omni Directional Indoor Antenna has a reverse SMA female connector that can be connected to your Access point or Wireless Network Adapter.



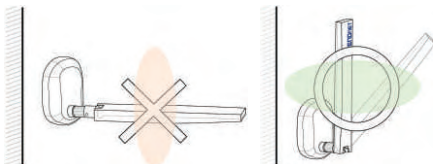
⚠ WARNING: The antenna can tilt 0° to 180° and rotate 360° . The Internal antenna wire is fixed therefore do not rotate the antenna beyond 360° .

Wall / partition mount (Antenna base with embedded magnets)

For antenna deployment, you can mount the antenna onto a wall using the fasteners and screws included or simply stick to metal surfaces.



⚠ WARNING: Please do NOT position the antenna in a horizontal direction. The antenna generates omni signals that run horizontally to the ground when the antenna is vertically oriented.



2. Hardware Installation

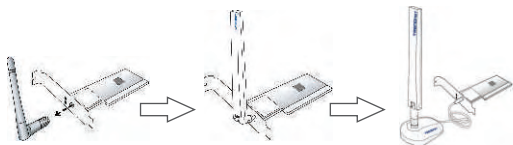
Recommended devices to connect with this antenna

⚠ WARNING: Please make sure that the antenna on your wireless device is detachable.

Wireless Access Points / Routers with detachable Antenna(s)



PCI adapter or IP Camera Client with detachable Antenna



⚠ Recommendation: Due to the nature of WiFi devices (receive / transmit), it is recommended that you install external antennas on the base station as well as the client.

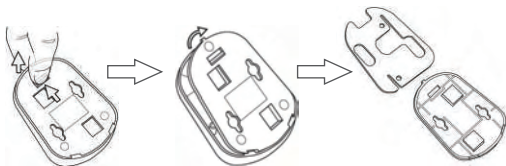
Recommended installation positions

This omni directional antenna receives and transmits at 360°. Therefore, the ideal position for the antenna is in the middle of the covered area.



Antenna Base Mounting Methods & Configuration

⚠ PLEASE READ THE FOLLOWING INSTALLATION STEPS BEFORE DRILLING HOLES IN THE WALL.



Press Tab

Lift Cover

**Remove
Weight Plate**

After removing the bottom cover from its seating, remove the metal weight plate from the ceiling clips to expose the screw holes.

⚠ In order to decrease the weight and increase the magnetic power, it is highly recommended that the metal plate be removed before installing antenna onto ceiling, partition, or any metal surface.

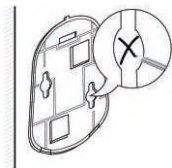
⚠ WARNING: Please make sure that the AP / Client device can reach your selected antenna position (Antenna Cable is 1 meter / 3 feet)



Select location



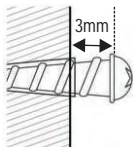
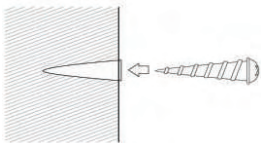
Place
base template



Mark screw
position

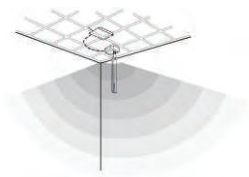
About the screws

After drilling holes in the drywall / gypsum / plasterboard, sink the plastic anchor into the hole (1/8 inch drill bit (3mm)). Leave about 3 to 5mm (1/8 inch) of the threaded screw exposed as depicted in the diagrams below.



Ceiling Mount Using Ceiling Clips or Magnets

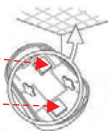
The special ceiling mount feature is mainly recommended for use when your wireless base station is hidden over the ceiling or some kind of anti-theft protection case is implemented.



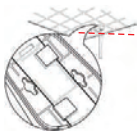
How to assemble the antenna stand for use with ceiling systems.



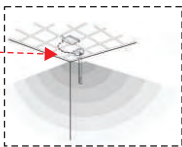
Press tab
and lift



Turn over cover, remove weight plate,
to expose ceiling clips.



Secure Clips
to Tee



Conceal AP/Router

⚠ Note: If the ceiling tees are made of steel, turning the antenna base cover over may not be necessary, because the base has embedded magnets which can be used to adhere the antenna to the ceiling tee.

Q1. Why do some of my wireless PCs receive Wi-Fi signals, and other PCs get a weaker signal?

A1. The TEW-AI750 is an Omni antenna and can only send and receive signals from a specified radius. You can adjust the position of the Wireless Access Point, extend your TEW-AI750 to an optimal location, or move those wireless PCs closer to the Wireless Access Point.

Q2. My access point indicates that it is receiving power, and my laptop is within range of the TEW-AI750. However, my laptop does not receive any signals from my access point.

A2. Make sure that you properly connect the antenna to the Wi-Fi Access Point. (See 2. hardware Installation)

Q3. Dose the TEW-AI750 work with my IEEE 802.11a Wireless Router or Wireless Card?

A3. Yes. The TEW-AI750 is compatible with IEEE 802.11a/b/g wireless devices.

Q4. Is it necessary to use the tapping screws or the wall anchors that come with the TEW-AI750B?

A4. It is only necessary if you decide to mount the TEW-AI750B at a permanent location. Use discretion when attaching mounting brackets to the TEW-AI750B.

If you have any questions regarding the TEW-AI750/TEW-AI750B, please contact TRENDnet Technical Support Department.

Certifications

This equipment has been tested and found to comply with FCC and CE Rules. Operation is subject to the following two conditions:

- (1) This device may not cause harmful interference.
- (2) This device must accept any interference received.
Including interference that may cause undesired operation.



Waste electrical and electronic products must not be disposed of with household waste. Please recycle where facilities exist. Check with your Local Authority or Retailer for recycling advice.



NOTE: THE MANUFACTURER IS NOT RESPONSIBLE FOR ANY RADIO OR TV INTERFERENCE CAUSED BY UNAUTHORIZED MODIFICATIONS TO THIS EQUIPMENT. SUCH MODIFICATIONS COULD VOID THE USER'S AUTHORITY TO OPERATE THE EQUIPMENT.

Limited Warranty

TRENDnet warrants its products against defects in material and workmanship, under normal use and service, for the following lengths of time from the date of purchase.

TEW-AI750/TEW-AI750B - 3 Years Warranty

If a product does not operate as warranted above during the applicable warranty period, TRENDnet shall, at its option and expense, repair the defective product or part, deliver to customer an equivalent product or part to replace the defective item, or refund to customer the purchase price paid for the defective product. All products that are replaced will become the property of TRENDnet. Replacement products may be new or reconditioned.

TRENDnet shall not be responsible for any software, firmware, information, or memory data of customer contained in, stored on, or integrated with any products returned to TRENDnet pursuant to any warranty.

There are no user serviceable parts inside the product. Do not remove or attempt to service the product by any unauthorized service center. This warranty is voided if (i) the product has been modified or repaired by any unauthorized service center, (ii) the product was subject to accident, abuse, or improper use (iii) the product was subject to conditions more severe than those specified in the manual.

Warranty service may be obtained by contacting TRENDnet office within the applicable warranty period for a Return Material Authorization (RMA) number, accompanied by a copy of the dated proof of the purchase. Products returned to TRENDnet must be pre-authorized by TRENDnet with RMA number marked on the outside of the package, and sent prepaid, insured and packaged appropriately for safe shipment.

WARRANTIES EXCLUSIVE: IF THE TRENDnet PRODUCT DOES NOT OPERATE AS WARRANTED ABOVE, THE CUSTOMER'S SOLE REMEDY SHALL BE, AT TRENDnet'S OPTION, REPAIR OR REPLACEMENT. THE FOREGOING WARRANTIES AND REMEDIES ARE EXCLUSIVE AND ARE IN LIEU OF ALL OTHER WARRANTIES, EXPRESSED OR IMPLIED, EITHER IN FACT OR BY OPERATION OF LAW, STATUTORY OR OTHERWISE, INCLUDING WARRANTIES OF MERCHANTABILITY AND FITNESS FOR A PARTICULAR PURPOSE. TRENDnet NEITHER ASSUMES NOR AUTHORIZES ANY OTHER PERSON TO ASSUME FOR IT ANY OTHER LIABILITY IN CONNECTION WITH THE SALE, INSTALLATION MAINTENANCE OR USE OF TRENDnet'S PRODUCTS.

TRENDnet SHALL NOT BE LIABLE UNDER THIS WARRANTY IF ITS TESTING AND EXAMINATION DISCLOSE THAT THE ALLEGED DEFECT IN THE PRODUCT DOES NOT EXIST OR WAS CAUSED BY CUSTOMER'S OR ANY THIRD PERSON'S MISUSE, NEGLIGENCE, IMPROPER INSTALLATION OR TESTING, UNAUTHORIZED ATTEMPTS TO REPAIR OR MODIFY, OR ANY OTHER CAUSE BEYOND THE RANGE OF THE INTENDED USE, OR BY ACCIDENT, FIRE, LIGHTNING, OR OTHER HAZARD.

LIMITATION OF LIABILITY: TO THE FULL EXTENT ALLOWED BY LAW TRENDnet ALSO EXCLUDES FOR ITSELF AND ITS SUPPLIERS ANY LIABILITY, WHETHER BASED IN CONTRACT OR TORT (INCLUDING NEGLIGENCE), FOR INCIDENTAL, CONSEQUENTIAL, INDIRECT, SPECIAL, OR PUNITIVE DAMAGES OF ANY KIND, OR FOR LOSS OF REVENUE OR PROFITS, LOSS OF BUSINESS, LOSS OF INFORMATION OR DATA, OR OTHER FINANCIAL LOSS ARISING OUT OF OR IN CONNECTION WITH THE SALE, INSTALLATION, MAINTENANCE, USE, PERFORMANCE, FAILURE, OR INTERRUPTION OF THE POSSIBILITY OF SUCH DAMAGES, AND LIMITS ITS LIABILITY TO REPAIR, REPLACEMENT, OR REFUND OF THE PURCHASE PRICE PAID, AT TRENDnet'S OPTION. THIS DISCLAIMER OF LIABILITY FOR DAMAGES WILL NOT BE AFFECTED IF ANY REMEDY PROVIDED HEREIN SHALL FAIL OF ITS ESSENTIAL PURPOSE.

Governing Law: This Limited Warranty shall be governed by the laws of the state of California.

AC/DC Power Adapter, Cooling Fan, and Power Supply carry 1 Year Warranty



TRENDnet

TRENDnet Technical Support

US/Canada Support Center

Contact

Telephone: 1(866) 645-3673

Email: support@trendnet.com

Tech Support Hours

24/7 Toll Free Tech Support



European Support Center

Contact

Telephone:

Deutsch: +49 (0) 6331 / 268-460

Français: +49 (0) 6331 / 268-461

0800-90-71-61 (numéro vert)

Español: +49 (0) 6331 / 268-462

English: +49 (0) 6331 / 268-463

Italiano: +49 (0) 6331 / 268-464

Dutch: +49 (0) 6331 / 268-465

Fax: +49 (0) 6331 / 268-466

Tech Support Hours

8:00am - 6:00pm

Middle European Time

Monday - Friday

Product Warranty Registration

Please take a moment to register your product online.

Go to TRENDnet's website at <http://www.trendnet.com>

TRENDnet

3135 Kashiwa Street

Torrance, CA 90505

USA