

TRENDnet®



Quick Installation Guide

TEW-821DAP (V1)

Table of Content

1 English

1. Before You Start
2. Initial Access Point Setup
3. AP Management Utility
4. Mounting the Device

1. Before You Start

Package Contents

- TEW-821DAP
- 1 x 5 ft. (1.5 m) network cable
- CD-ROM (User's Guide and Utility)
- Quick Installation Guide
- Power adapter (12V DC, 1A)
- Mounting Plate

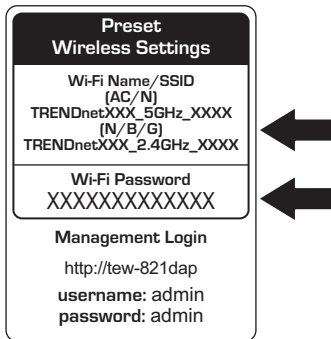
Minimum Requirements

- Computer with network port and web browser
- Network switch or router with an available network port

Mac Users: Please refer to the User's Guide to manually configure the access point.

2. Initial Access Point Setup

1. Bring the TEW-821DAP to a location of its final installation point.
2. Connect the TEW-821DAP to your router or switch. You may also connect the device directly to a network port on your computer. If you are connecting to a router or switch, make sure your computer is connected to the same network.
3. If you are connecting your TEW-821DAP to a PoE switch, the device will power on automatically. If you are connecting to a computer, or a non-PoE switch, you will need to use the included power adapter.
4. To use the power adapter, plug the power adapter into the TEW-821DAP, then plug the adapter into an electrical outlet. Wait 60 seconds, then confirm that the status LEDs on the front of the unit are illuminated. Your TEW-821DAP access point is now active. The device is pre-configured to automatically connect to your network.
5. For your security, each TEW-821DAP comes pre-encrypted with a unique WiFi Name (SSID) and WiFi Password. You can find your device's SSID and WiFi password on the white labels located on the device. Use this information to connect to the TEW-821DAP access point. If the TEW-821DAP is reset, the SSID and WiFi key will also be reset to the default login credentials located on the white label.

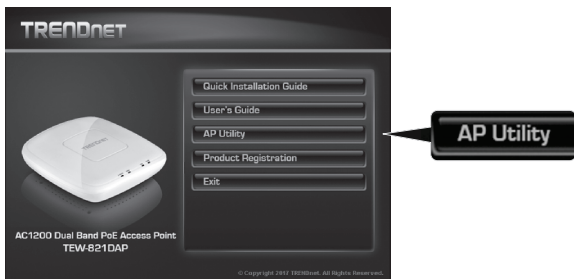


6. No further setup is required, proceed to Section 4 **Mounting the Device**. To change device settings proceed to Section 3 **AP Management Utility**.

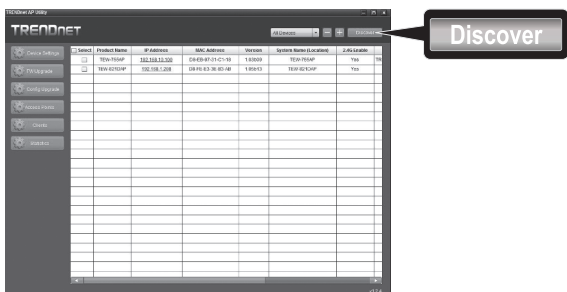
3. AP Management Utility

1. Insert the included CD into your computer, and select **AP Utility** from the menu.

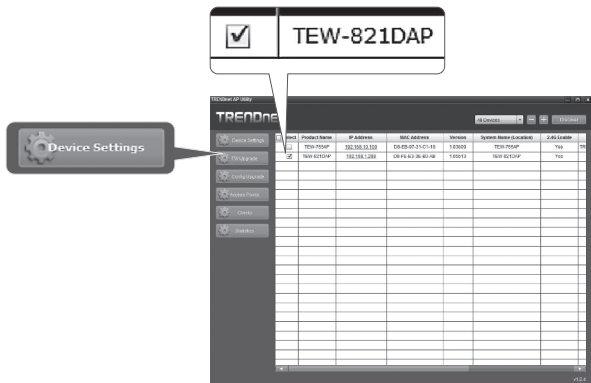
Note: The AP Utility only supports Windows based computers. Please visit TRENDnet.com for complete list of the AP Utility's supported operating systems.



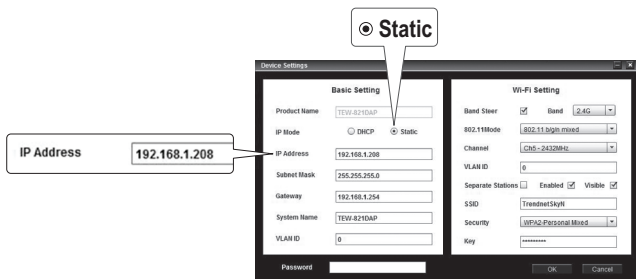
2. Run the utility. The utility will attempt to detect your device automatically. If it does not, click on the **Discover** button.



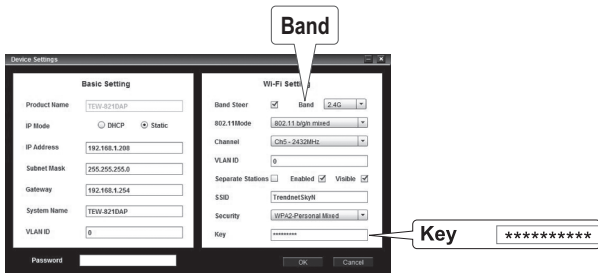
3. Select your device by checking the box next to your TEW-821DAP, and click on **Device Settings**.



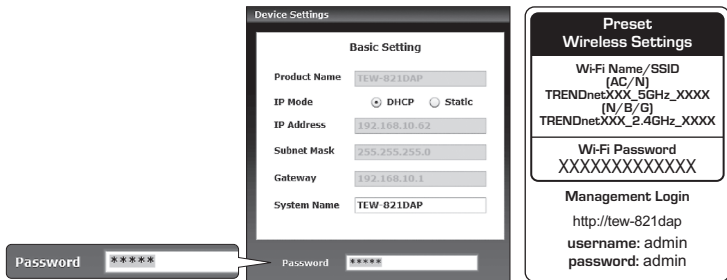
4. The Device Settings page will show your basic Wi-Fi network settings. If your network requires a static IP address, select the **Static** radio button and enter your settings. If you are not sure, leave **IP Mode** on the default setting, **DHCP**.



5. To configure your wireless network, select the **Band** from the dropdown menu, and enter your settings. If you are using both 2.4GHz and 5GHz networks, they must be configured individually. The **Key** is your current WiFi password. The default key is located on the white sticker on the bottom of the TEW-821DAP.

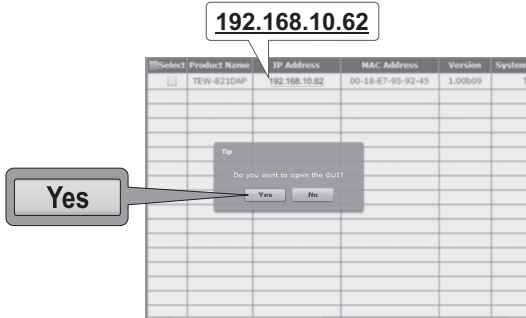


6. When you are finished, enter the password for your TEW-821DAP (NOT your WiFi password) and click **OK** to save your changes. If this is the first time you are accessing the device, or if the unit has been reset, the default password is **admin**. The utility will save your settings.



7. If you are using both 2.4GHz and 5GHz networks, they must be configured individually. Repeat steps 2 to 6 to configure your other network
8. Once your wireless networks are configured, confirm connectivity by logging into your TEW-821DAP WiFi network. If you can successfully connect, your configuration is complete.

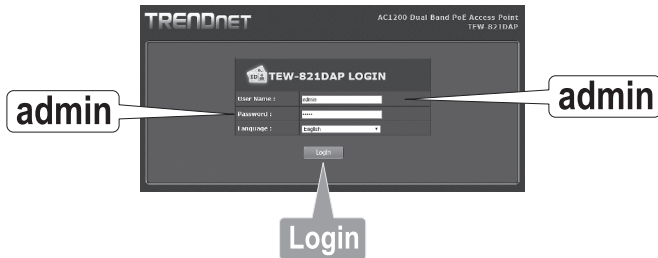
9. To access the unit's advanced settings, launch the **AP Utility**, locate your TEW-821DAP, click on the IP Address, and select **Yes** to configure your device.



10. This will launch your default web browser, and automatically direct it to your TEW-821DAP for advanced settings.
11. On the Login screen, enter the username and password. If this is your first time accessing the device, or if the TEW-821DAP has been reset, the default login credentials are:

Name: admin

Password: admin



12. Select the desired language, then click **Login** to continue.

13. The status screen will display information about your TEW-821DAP access point, and the unit's wireless networks.

TRENDNET AC1200 Dual Band PoE Access Point
TEW-821DAP

Save/Reload: 0

Status

Main

- 2.4G Wireless Client List
- 5G Wireless Client List
- System Log

System

- Wireless 2.4GHz
- Wireless 5GHz
- Management

Status

This section displays the device status information.

System Info

Device Name	TEW-821DAP
Firmware Version	1.00 , 27, May, 2015
System Time	Wed May, 27, 2015 20:41:54
System Up Time	0 Day, 4:21:40

Network

MAC Address	00:18:E7:95:92:45
IP Address	192.168.10.82
Subnet Mask	255.255.255.0
Default Gateway	192.168.10.1
Primary Domain Name Server	192.168.10.1
Secondary Domain Name Server	0.0.0.0

2.4GHz Wireless

Operation Mode	Access Point
Wireless Mode	2.4GHz 802.11 b/g/n mixed mode
Channel Width	20/40 MHz
Channel (Frequency)	6

SSID List:

SSID	MAC Address	Security Mode
TRENDnet821_2.4GHz_0045	00:18:E7:95:92:45	WPA2-PSK AES

5GHz Wireless

Operation Mode	Access Point
Wireless Mode	5GHz 802.11 a/n/ac mixed mode
Channel Width	20/40/80 MHz
Channel (Frequency)	149

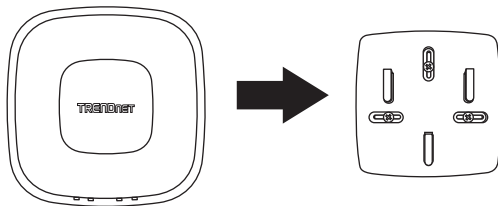
SSID List:

SSID	MAC Address	Security Mode
TESTEST5555	00:18:E7:95:92:45	WPA2-PSK AES

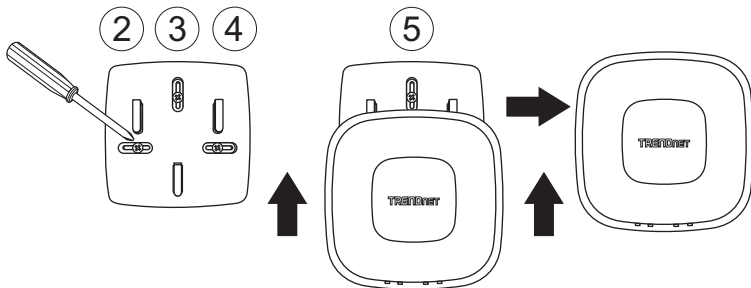
14. For detailed information on advanced settings and features, please refer to the User's Guide.

4. Mounting the Device

1. Remove the mounting plate from the TEW-821DAP.



2. Place the mounting plate on the wall or ceiling where the device will be located, and mark the location of the screw holes. Ensure that the device has enough clearance to slide on and off the mounting plate. If you are using a non-PoE router or switch, and external power is required, ensure that your mounting location has access to an electrical outlet.
3. Drill out the marked screw holes, and insert the plastic wall anchors into the screw holes.
4. Secure the mounting plate, using the screws that came with the device.
5. Place the TEW-821DAP on the mounting plate, and attach the network cable. If you are using a non-PoE router or switch and require external power, connect the power adapter.



Toll Free English Technical Support

US/Canada: 855-373-4741

Hours: Monday-Friday

7:00 AM- 6:00 PM, Pacific Standard Time.

After hours: 866-845-3673

Declaration of Conformity

TRENDnet®

Manufacturer's Name and Address

TRENDnet, Inc.
20675 Manhattan Place
Torrance, CA 90501 USA

Zwolsestraat 156 2587 WB
The Hague The Netherlands



Product Information

Model Number: TEW-821DAP
Product Name: N300 PoE Access Point
Trade Name: TRENDnet

TRENDnet hereby declare that the product is in compliance with the essential requirements and other relevant provisions under our sole responsibility.

Safety

EN 60950-1: 2006 + A11: 2009: + A1: 2010 + A12: 2011 + A2: 2013

EMC

EN 301 489-1 V1.9.2: 09-2011
EN 301 489-17 V2.2.1: 09-2012
EN 55032: 2012/AC:2013, Class B
EN 55024: 2010

Radio Spectrum & Health

EN 300 328 V1.9.1: 02-2015
EN 301 893 V1.8.1: 03-2015
EN 62311: 2008

Energy Efficiency

Regulation (EC) No. 1275/2008, No. 278/2009, No. 801/2013

This product is herewith confirmed to comply with the Directives.

Directives:

Low Voltage Directive 2014/35/EC
EMC Directive 2014/30/EC
R&TTE Directive 1999/5/EC
EMF Directive 1999/519/EC
Ecodesign Directive 2009/125/EC
RoHS Directive 2011/65/EU
REACH Regulation (EC) No. 1907/2006

Person responsible for this declaration.

Place of Issue: Torrance, California, USA

Date: March 27, 2017

Name: Sonny Su

Title: Director of Technology

Signature:



TRENDnet[®]

Certifications

This device complies with Part 15 of the FCC Rules.

Operation is subject to the following two conditions:

- (1) This device may not cause harmful interference.
- (2) This device must accept any interference received.

Including interference that may cause undesired operation.



Waste electrical and electronic products must not be disposed of with household waste. Please recycle where facilities exist. Check with your Local Authority or Retailer for recycling advice.

Applies to PoE Products Only: This product is to be connected only to PoE networks without routing to the outside plant.

Note

The Manufacturer is not responsible for any radio or TV interference caused by unauthorized modifications to this equipment. Such modifications could void the user's authority to operate the equipment.

Advertencia

En todos nuestros equipos se mencionan claramente las características del adaptador de alimentación necesario para su funcionamiento. El uso de un adaptador distinto al mencionado puede producir daños físicos y/o daños al equipo conectado. El adaptador de alimentación debe operar con voltaje y frecuencia de la energía eléctrica domiciliar existente en el país o zona de instalación.

Technical Support

If you have any questions regarding the product installation, please contact our Technical Support.

Toll free US/Canada: **1-855-373-4741**

Regional phone numbers available at www.trendnet.com/support

TRENDnet

20675 Manhattan Place
Torrance, CA 90501
USA

Product Warranty Registration

Please take a moment to register your product online. Go to TRENDnet's website at:

www.trendnet.com/register