

TRENDNET®



Quick Installation Guide
TEW-809UB(V1)

Table of Contents

1 Español

1. Para Windows
2. Para Mac

1

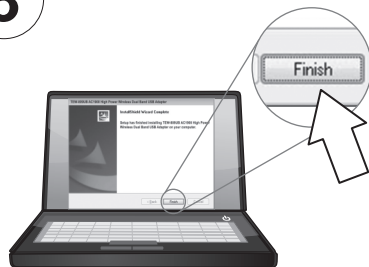


Nota: Si su computadora no incluye un drive para CD-ROM, baje los drivers y utilidad para su modelo específico en www.TRENDnet.com/support

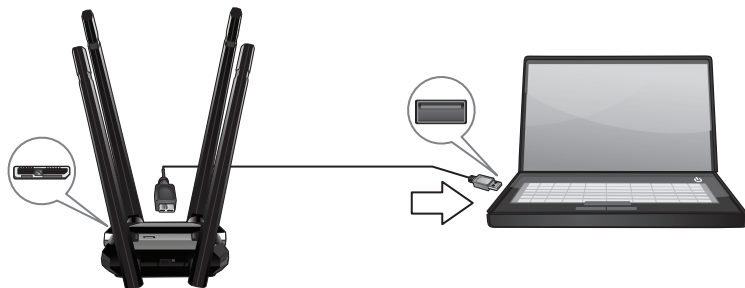
2



3

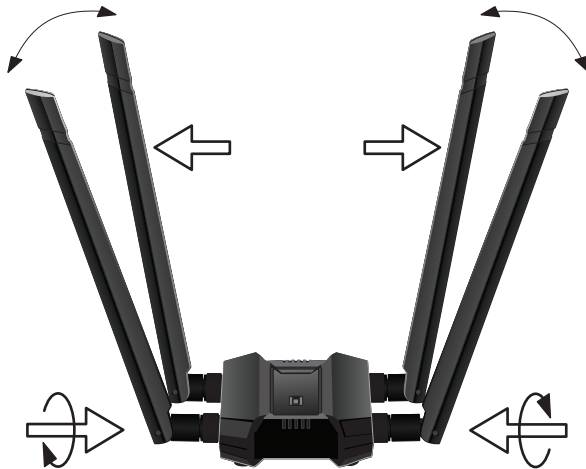


4



5

Para obtener una cobertura óptima, acople las antenas al adaptador y colóquelas en ángulos opuestos y algo separadas entre sí a cada lado, según se indica.



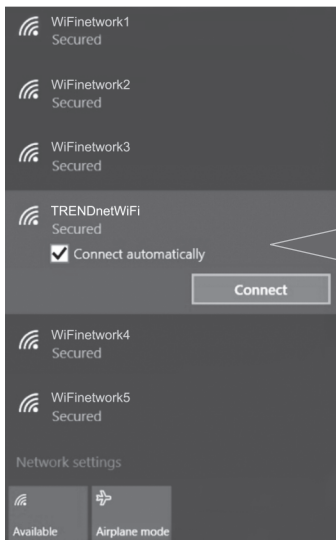
6

Haga clic en el icono wireless de la barra de tareas, en la esquina derecha inferior.



7

Haga clic en la red wireless a la que desea conectarse y después haga clic en **Connect** (conectar).



8

Indique la clave WiFi (contraseña).

WiFiNetwork1
Secured

WiFiNetwork2
Secured

WiFiNetwork3
Secured

TRENDnetWiFi
Secured

Enter the network security key

.....

You can also connect by pushing the button on the router.

Share network with my contacts

Next Cancel

WiFiNetwork4
Secured

Network settings

Available Airplane mode

TRENDnetWiFi
Secured

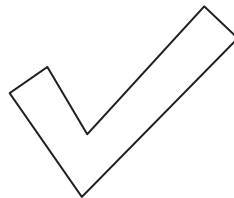
Enter the network security key

.....

You can also connect by pushing the button on the router.

Share network with my contacts

Next Cancel



Nota: Para las instrucciones de MAC OS X (10.6-10.11), consulte la Guía del usuario.

Certifications

This device complies with Part 15 of the FCC Rules. Operation is subject to the following two conditions:

- (1) This device may not cause harmful interference.
- (2) This device must accept any interference received. Including interference that may cause undesired operation.



Waste electrical and electronic products must not be disposed of with household waste. Please recycle where facilities exist. Check with your Local Authority or Retailer for recycling advice.

Technical Support

If you have any questions regarding the product installation, please contact our Technical Support.

Toll free US/Canada: **1-866-845-3673**

Regional phone numbers available at www.trendnet.com/support

TRENDnet

20675 Manhattan Place
Torrance, CA 90501
USA

Applies to PoE Products Only: This product is to be connected only to PoE networks without routing to the outside plant.

Note

The Manufacturer is not responsible for any radio or TV interference caused by unauthorized modifications to this equipment. Such modifications could void the user's authority to operate the equipment.

Advertencia

En todos nuestros equipos se mencionan claramente las características del adaptador de alimentación necesario para su funcionamiento. El uso de un adaptador distinto al mencionado puede producir daños físicos y/o daños al equipo conectado. El adaptador de alimentación debe operar con voltaje y frecuencia de la energía eléctrica domiciliar existente en el país o zona de instalación.

Product Warranty Registration

Please take a moment to register your product online. Go to TRENDnet's website at:

www.trendnet.com/register