

# TRENDNET<sup>®</sup>



---

Quick Installation Guide  
TEW-809UB(V1)

## Table of Contents

---

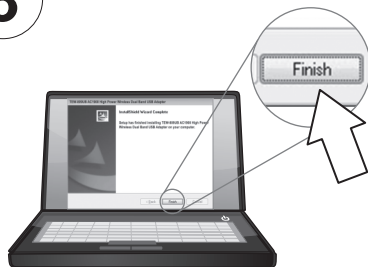
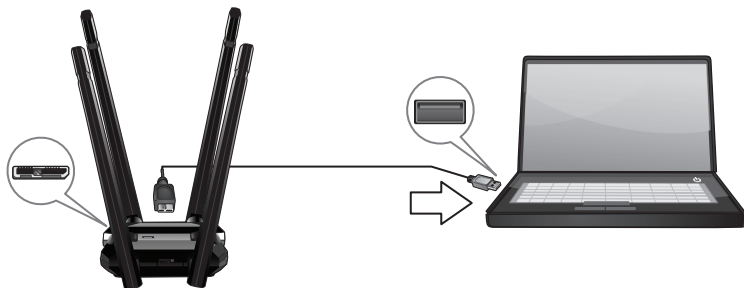
### **1 Português**

1. Para o Windows
2. Para Mac

1

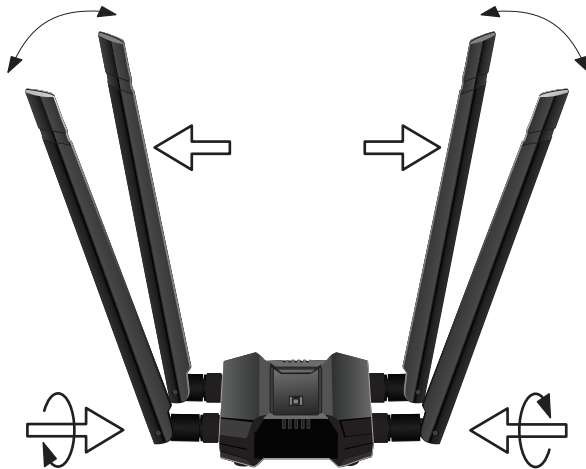


**Nota:** Se o seu computador não inclui um drive de CD-ROM, baixe os drivers e utilitários para o seu modelo em [www.TRENDnet.com/support](http://www.TRENDnet.com/support).

**2****3****4**

5

Fixe as antenas no adaptador e posicione-as em ângulos opostos e ligeiramente afastados entre si em cada um dos lados como exibido para obter cobertura ideal.



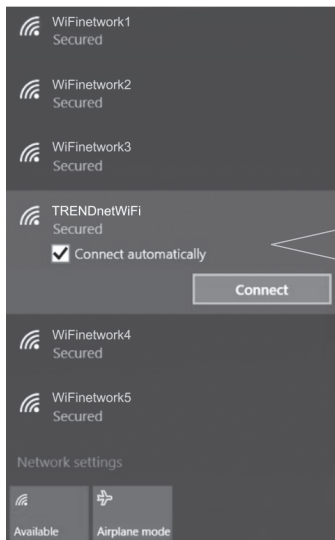
**6**

Clique no ícone wireless na barra de tarefas localizada no canto inferior direito.



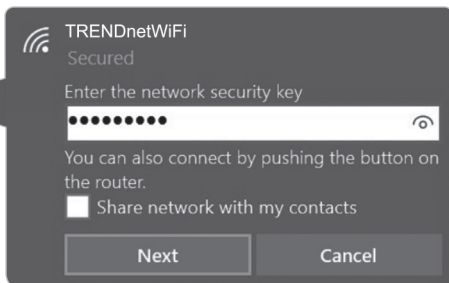
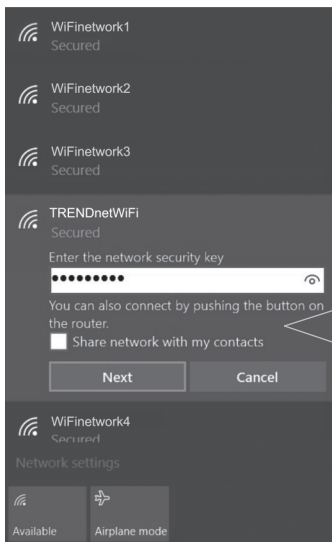
# 7

Clique na rede wireless à qual você gostaria de conectar e clique em **Conectar**.

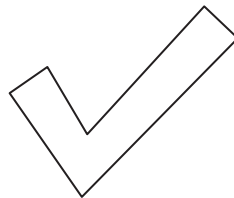


8

Digite a chave do Wi-Fi (senha).







**Nota:** Para MAC OS X (10.6-10.11), favor recorrer ao guia do usuário no CD-ROM.

## Certifications

This device complies with Part 15 of the FCC Rules. Operation is subject to the following two conditions:

- (1) This device may not cause harmful interference.
- (2) This device must accept any interference received. Including interference that may cause undesired operation.



Waste electrical and electronic products must not be disposed of with household waste. Please recycle where facilities exist. Check with your Local Authority or Retailer for recycling advice.

## Technical Support

If you have any questions regarding the product installation, please contact our Technical Support.

Toll free US/Canada: **1-866-845-3673**

Regional phone numbers available at [www.trendnet.com/support](http://www.trendnet.com/support)

## TRENDnet

20675 Manhattan Place  
Torrance, CA 90501  
USA

**Applies to PoE Products Only:** This product is to be connected only to PoE networks without routing to the outside plant.

## Note

The Manufacturer is not responsible for any radio or TV interference caused by unauthorized modifications to this equipment. Such modifications could void the user's authority to operate the equipment.

## Advertencia

En todos nuestros equipos se mencionan claramente las características del adaptador de alimentación necesario para su funcionamiento. El uso de un adaptador distinto al mencionado puede producir daños físicos y/o daños al equipo conectado. El adaptador de alimentación debe operar con voltaje y frecuencia de la energía eléctrica domiciliar existente en el país o zona de instalación.

## Product Warranty Registration

Please take a moment to register your product online. Go to TRENDnet's website at:

[www.trendnet.com/register](http://www.trendnet.com/register)