

TRENDNET[®]



Quick Installation Guide
TEW-809UB(V1)

Table of Contents

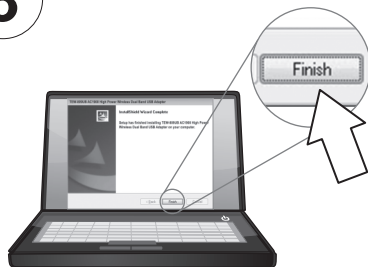
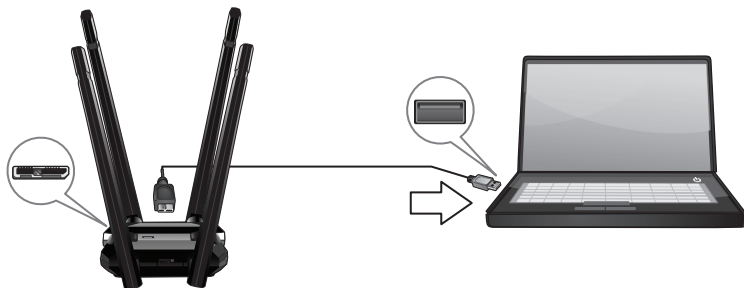
1 Deutsch

1. Für Windows
2. Für Mac

1

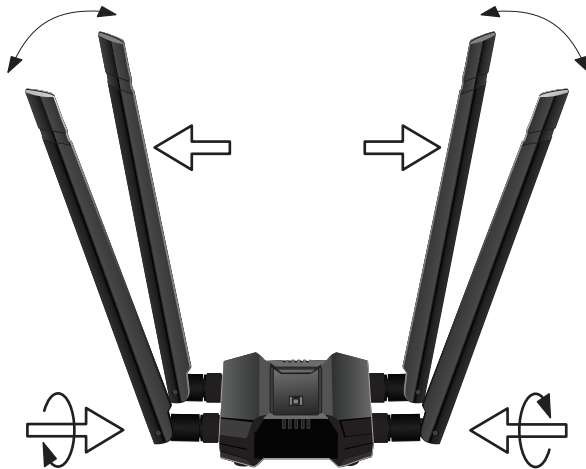


Hinweis: Wenn Ihr Computer hat kein CD-Rom-Laufwerk, können Sie alle CD-Rom-Laufwerke für Ihr Modell von hier herunterladen www.trendnet.com/support.

2**3****4**

5

Bringen Sie die Antennen am Adapter an und richten Sie die Antennen für optimalen Empfang in entgegengesetzten Winkeln und leicht voneinander weg aus wie illustriert.



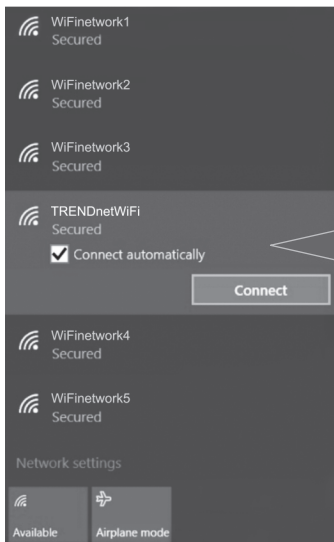
6

Klicken Sie auf das Wireless-Symbol in der Task-Leiste am unteren rechten Bildschirmrand.



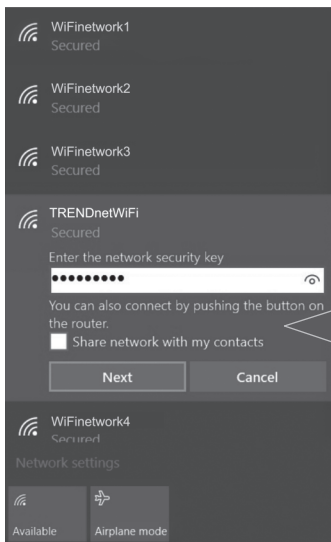
7

Klicken Sie auf das Wireless-Netzwerk, zu dem Sie eine Verbindung herstellen möchten und klicken Sie dann auf **"Verbinden"**.



8

Geben Sie den WiFi-Schlüssel (Passwort) ein.

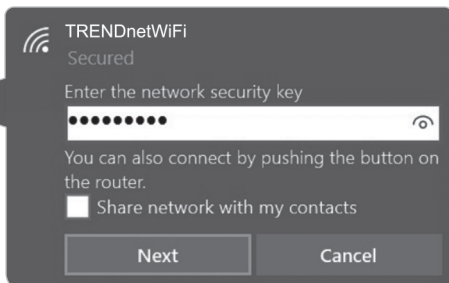


WiFi network selection screen showing four networks:

- WiFiNetwork1 Secured
- WiFiNetwork2 Secured
- WiFiNetwork3 Secured
- TRENDnetWiFi Secured**
- WiFiNetwork4 Secured

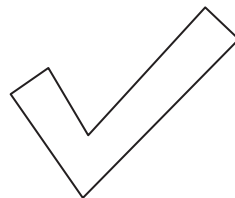
Under TRENDnetWiFi, there is a text field for the network security key (password) with a visibility icon. Below the field, it says: "You can also connect by pushing the button on the router." There is a checkbox for "Share network with my contacts". At the bottom of this section are "Next" and "Cancel" buttons.

At the bottom of the screen, there is a "Network settings" section with "Available" and "Airplane mode" options.



Callout dialog for TRENDnetWiFi:

- TRENDnetWiFi Secured
- Enter the network security key
- Text field for password with visibility icon
- You can also connect by pushing the button on the router.
- Share network with my contacts
- Next Cancel



Hinweis: Zu MAC OS X (10.6-10.11) finden Sie in der Bedienungsanleitung auf der beiliegenden CD.

Certifications

This device complies with Part 15 of the FCC Rules. Operation is subject to the following two conditions:

- (1) This device may not cause harmful interference.
- (2) This device must accept any interference received. Including interference that may cause undesired operation.



Waste electrical and electronic products must not be disposed of with household waste. Please recycle where facilities exist. Check with your Local Authority or Retailer for recycling advice.

Technical Support

If you have any questions regarding the product installation, please contact our Technical Support.

Toll free US/Canada: **1-866-845-3673**

Regional phone numbers available at www.trendnet.com/support

TRENDnet

20675 Manhattan Place
Torrance, CA 90501
USA

Applies to PoE Products Only: This product is to be connected only to PoE networks without routing to the outside plant.

Note

The Manufacturer is not responsible for any radio or TV interference caused by unauthorized modifications to this equipment. Such modifications could void the user's authority to operate the equipment.

Advertencia

En todos nuestros equipos se mencionan claramente las características del adaptador de alimentación necesario para su funcionamiento. El uso de un adaptador distinto al mencionado puede producir daños físicos y/o daños al equipo conectado. El adaptador de alimentación debe operar con voltaje y frecuencia de la energía eléctrica domiciliar existente en el país o zona de instalación.

Product Warranty Registration

Please take a moment to register your product online. Go to TRENDnet's website at:

www.trendnet.com/register