

User's Guide

TRENDnet[®]



N300 High Power Easy-N-Range Extender

TEW-737HRE

Table of Contents

Table of Contents	2	Federal Communication Commission Interference Statement	17
Product Overview	3	FCC Radiation Exposure Statement	17
Features	3	Industry Canada	18
Ease of Use.....	3	Radiation Exposure Statement:	18
Security	3	Europe – EU Declaration of Conformity	19
Performance	4	Safety.....	19
Package Contents.....	4	EMC.....	19
Hardware Features	5	Radio Spectrum & Health	19
Application Diagram	6	Energy Efficiency	19
Setting Up.....	7	Directives	19
WPS Connection.....	7	RoHS.....	20
Web Browser Configuration	9	ErP Statement.....	21
Management	12	Limited Warranty	23
Multi-Language.....	12		
Wi-Fi Setting	12		
Wireless Client.....	12		
Management	13		
Upload Firmware.....	13		
Settings Management.....	14		
Status	14		
Technical Specifications	15		
Troubleshooting	16		
Regulations	17		

Product Overview



TEW-737HRE

Features

TRENDnet's N300 High Power Easy-N-Range Extender, model TEW-737HRE, offers extreme wireless coverage to eliminate existing wireless network dead spots. Setup takes minutes with no CD installation and it stays out of the way by plugging directly into an outlet. Simply press the Wi-Fi Protected Setup (WPS) button on your router, then on the TEW-737HRE and you're done—it's now extending your wireless network over a large area.

Ease of Use

Easy Setup

No CD installation—simply plug in the extender, scan for your wireless router, and connect

No Clutter

The compact form factor stays off the ground by plugging directly into an outlet

One Touch Connection

Securely extend your wireless network at the touch of the Wi-Fi Protected Setup (WPS) button

Security

Encrypted Wireless

Supports the latest encryption and automatically adopts router settings

Performance

Extreme Coverage

High power amplifiers and multiple antenna technology offer extreme wireless coverage

N300 Wireless

Proven 300 Mbps Wireless N

Ethernet Port

Ethernet port for easy management access

Compatibility

Works with all Wireless N router brands

**Maximum wireless signal rates are referenced from IEEE 802.11 theoretical specifications. Actual data throughput and coverage will vary depending on interference, network traffic, building materials and other conditions.*

Package Contents

TEW-737HRE package includes:

- TEW-737HRE
- Multi-Language Quick Installation Guide
- CD-ROM (User's Guide)

If any package content is missing or damaged, please contact the retail store, online retailer, or reseller/distributor from which the product was purchased.

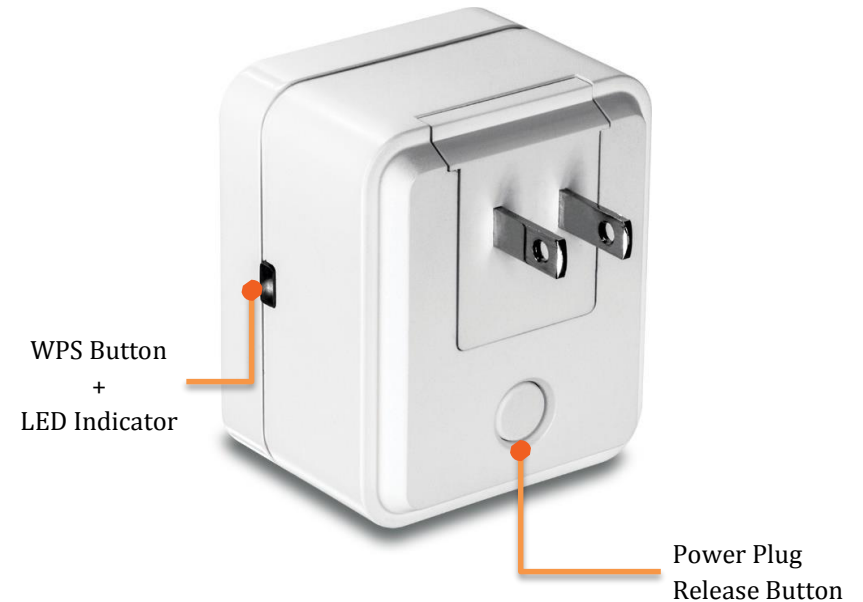
Hardware Features



Network Port Connect a network cable (Ethernet cable) to your computer for repeater configuration.

Reset Button Resets your repeater. Push and hold this button for 5 seconds with a pin or paper clip to reset configuration to factory default.

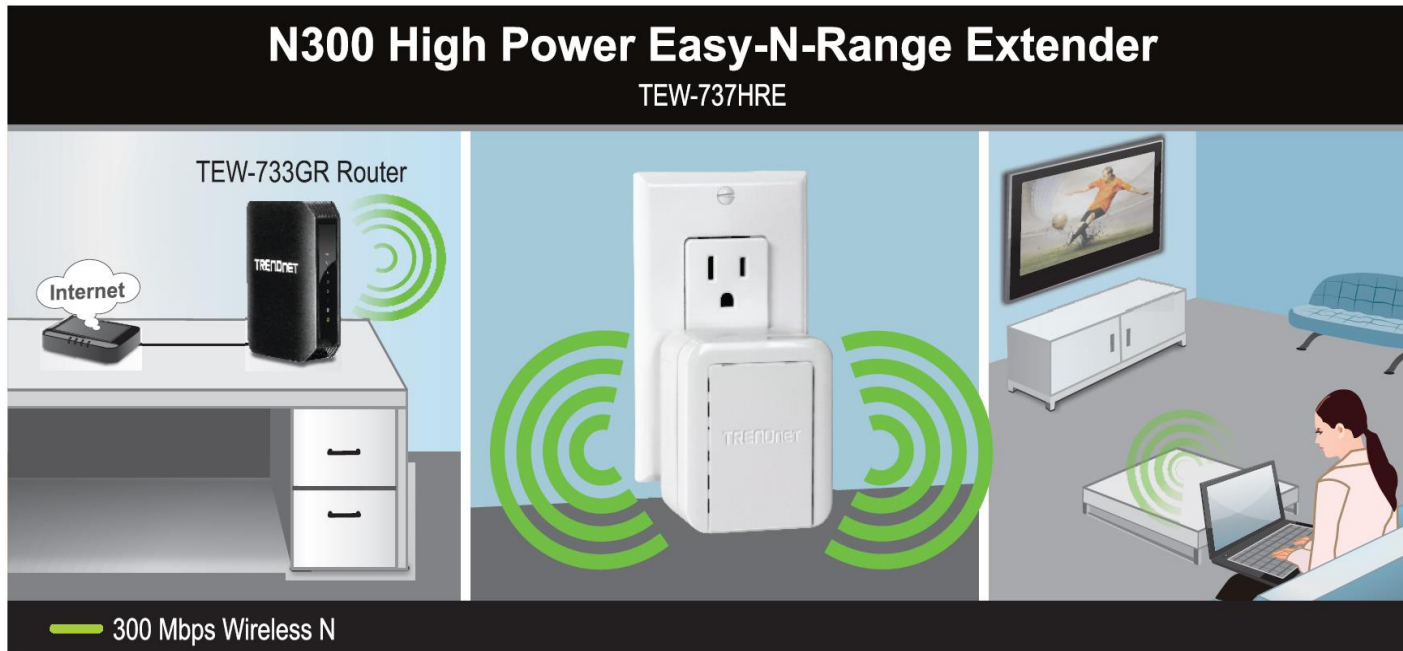
On/Off Switch Switch the On/Off button to turn on or turn off your repeater.



WPS (Wi-Fi Protected Setup) Button + LED Indicator Push and release the WPS button to activate WPS copying wireless settings from your router. The LED indicator will start blinking in green when WPS pairing is activated.

Power Plug Release Button To exchange different style of power plug. (This package comes with only one power plug.)

Application Diagram



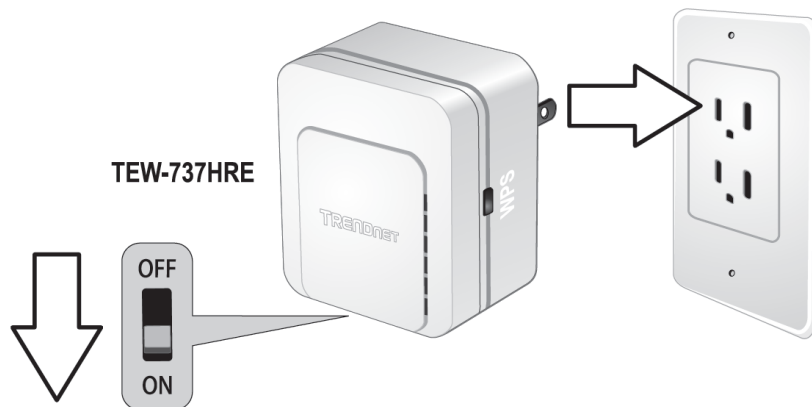
TEW-737HRE is a high power repeater which can extend your wireless router's range or coverage. Install TEW-737HRE at a location in between wireless router and your computer.

Setting Up

There are two ways of setup: by pushing Wi-Fi Protected Setup (WPS) button or web browser configuration.

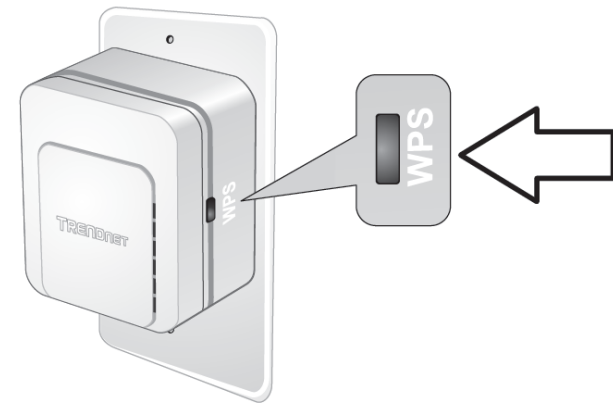
WPS Connection

1. Plug in the TEW-737HRE to a power outlet nearby your wireless router and switch the device on.

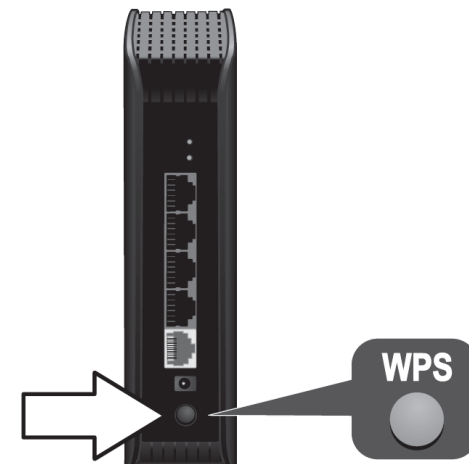


The LED indicator will start blinking in red, it means the system is booting up. When the LED blinking in amber, the TEW-737HRE is ready for setup.

2. Press and release the WPS button on the repeater. The LED will be blinking in green, which means the TEW-737HRE has begun WPS pairing.



3. Press and hold the WPS button on the router for 5 seconds to start WPS pairing.



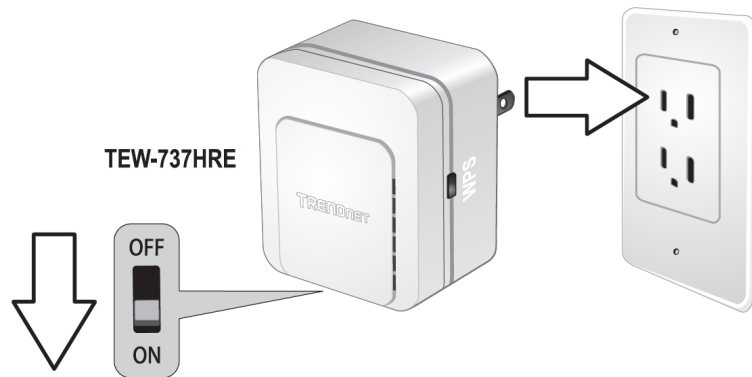
4. The LED will change to solid green once the WPS connection is established.



5. (Optional) Relocate the TEW-737HRE and plug at a location between wireless router and your computer.

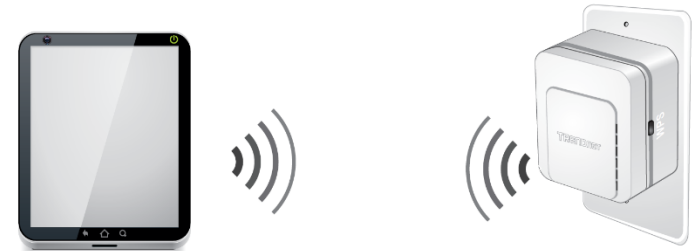
Web Browser Configuration

1. Plug in the TEW-737HRE to a power outlet nearby your wireless router and computer, then switch the device on.



The LED indicator will start blinking in red, which means the system is booting up. When the LED blinking in amber, the TEW-737HRE is ready for setup.

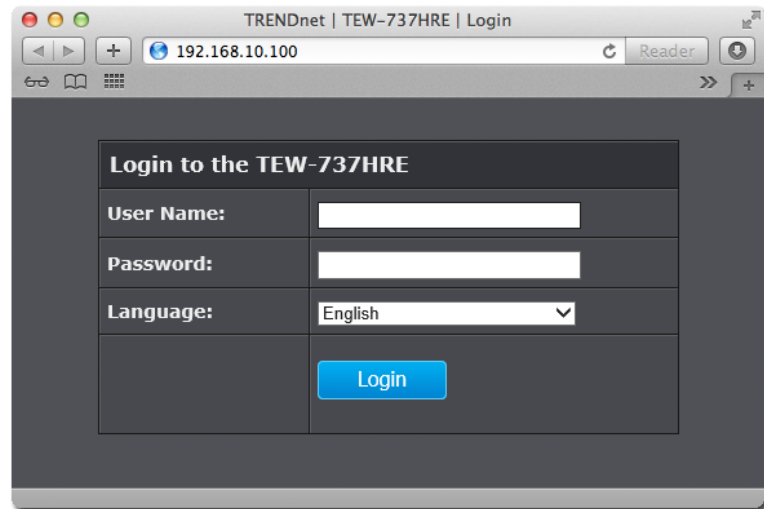
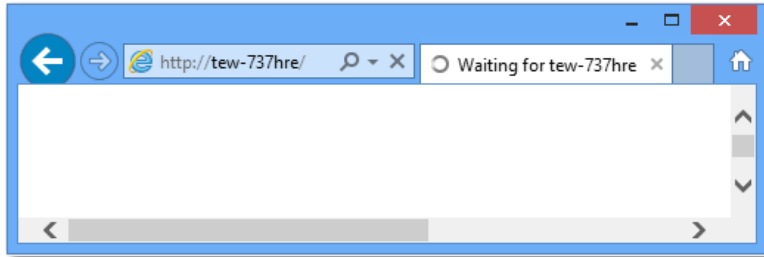
2. Open your computer's wireless network settings and search available wireless networks for **TRENDnet737**. No security password is required. The wireless encryption security will be setup in following steps.



Or,
Connect a network cable (not included in the package) from your computer to the TEW-737HRE's network port.

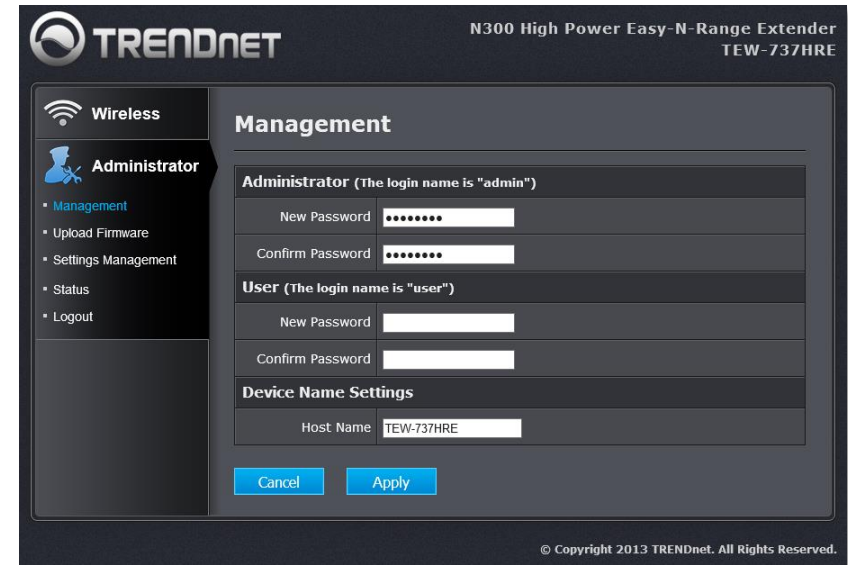


3. Open the web browser and type **http://tew-737hre** or **http://192.168.10.100** to access the administration page. (See trouble shooting page if you cannot access the administration page.)

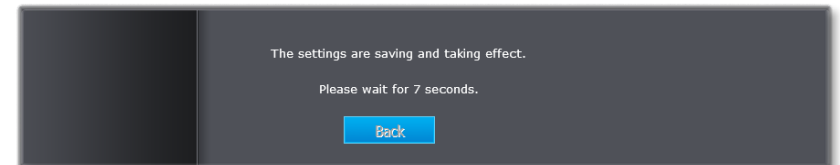


Enter administrator login information. (The default user name is **admin** and the password is **admin**.)

4. Change your administrator password from the factory default setting. Click **Apply** to continue.

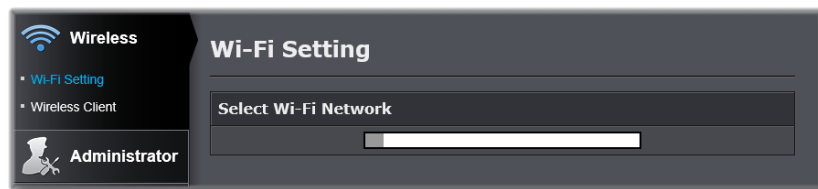
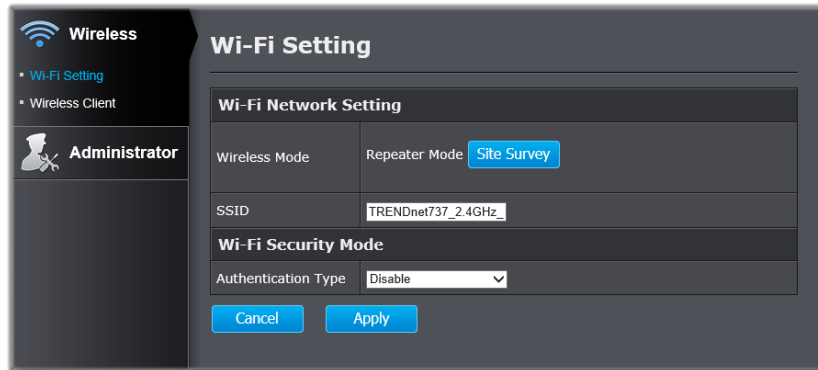


5. TEW-737HRE will apply the password change and then reboot. Click **Back** and login again with your new password.

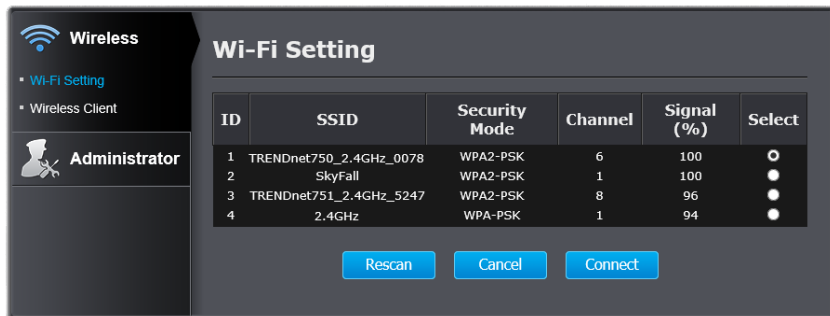


* Make sure you are still connecting to the default SSID: **TRENDnet737** after device reboots.

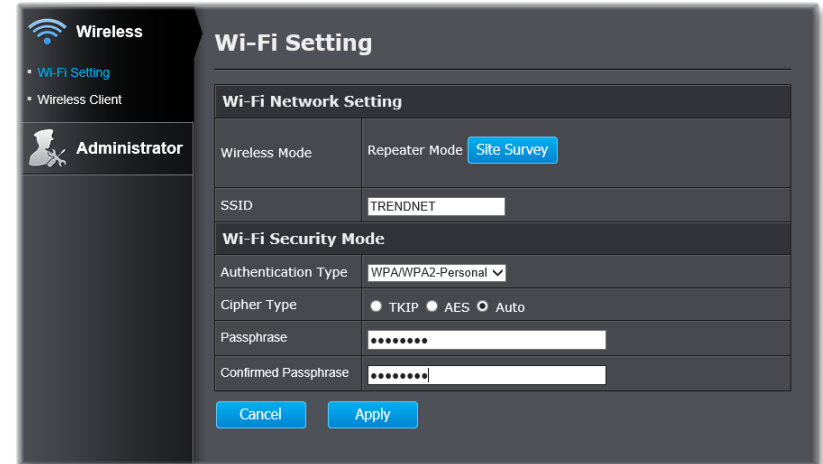
6. Click **Site Survey** to look for the wireless router or access point you want to connect with. (If you want to setup the connection manually, just enter the SSID and skip site survey, go to step 8 directly.)



7. Select the wireless router or access point you want to connect with and then click **Connect**.



8. Select authentication type and enter pass phrase and then click **Apply**.



9. TEW-737HRE will reboot to apply the change. The LED will cycle through flashing red, flashing amber, and then turn to solid green once the connection is established.



10. (Optional) Relocate the TEW-737HRE and plug at a location between wireless router and your computer.

Management

Multi-Language

Select your preferred language in the TEW-737HRE login page.

Login to the TEW-737HRE	
User Name:	admin
Password:	••••••••
Language:	English Spanish German Russia French

Wi-Fi Setting

Click **Wi-Fi Setting** on the menu. The default TEW-737HRE Wi-Fi setting will show up. You can change the setting or copy Wi-Fi setting from wireless router by clicking Site Survey. (See **Setup** section for details.)

Wi-Fi Setting	
Wi-Fi Network Setting	
Wireless Mode	Repeater Mode Site Survey
SSID	TRENDnet737_2.4GHz
Wi-Fi Security Mode	
Authentication Type	Disable
Cancel Apply	

Wireless Client

Click **Wireless Client** on the menu to list associated wireless clients.

Wireless Client	
Connected Time	MAC Address
00:14:10	00:14:d1:d9:d4:01

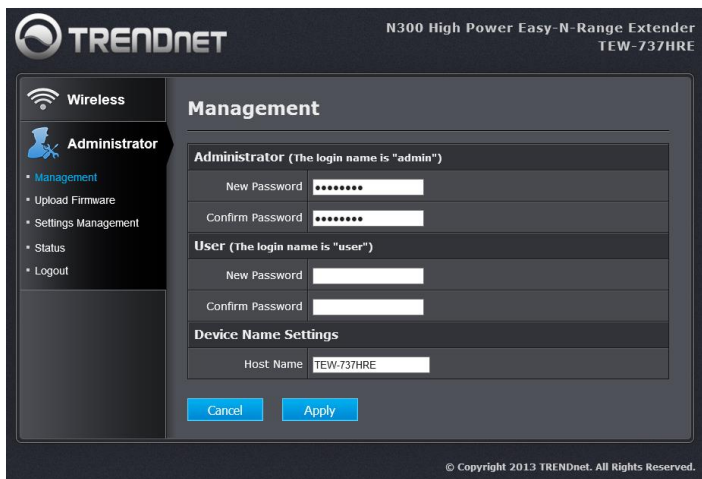
Management

Click **Management** on the menu to change your administrator password, user password and device name.

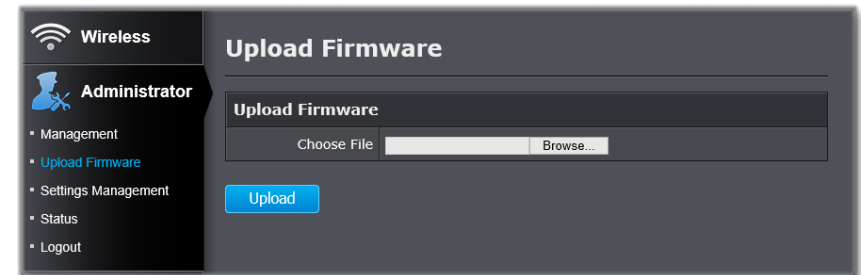
Administrator: Administrator is authorized to change TEW-737HRE settings.

User: User is authorized to login and view TEW-737HRE settings, but not change them.

Device Name: The host name can be searched on the network. You can change the host name of the TEW-737HRE to another name.



Upload Firmware

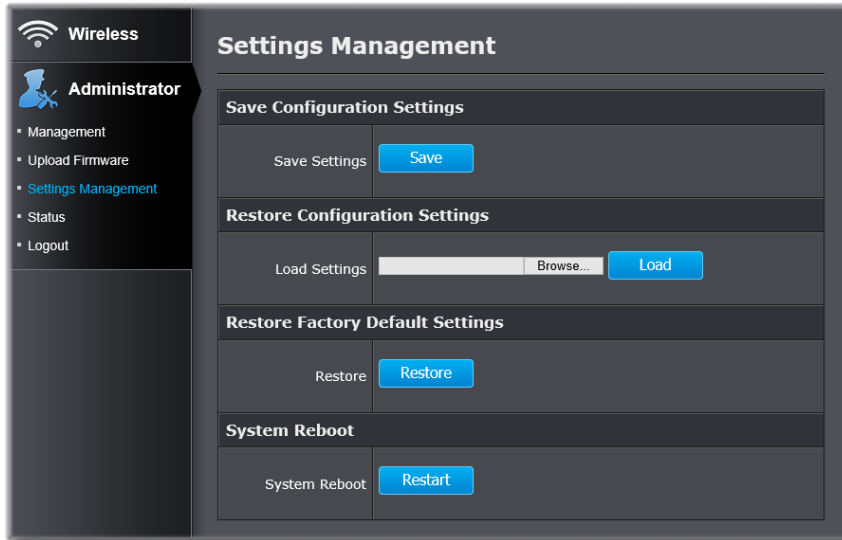


Click **Upload Firmware** on the menu to list associated wireless clients. TRENDnet may periodically release firmware upgrades that might add features or fix problems associated with your TRENDnet model and version. To find out if there is a firmware upgrade available for your device, please check your TRENDnet model and version using the link.

<http://www.trendnet.com/downloads/>

1. If a firmware upgrade is available, download the firmware to your Computer.
2. Unzip the file to a folder on your computer.
3. Log into the repeater (default <http://tew-737HRE>)
4. Click on **Administrator** and then **Upload Firmware**.
5. Click **Browse ...** and navigate to the folder on your computer in which the unzipped firmware file (.bin) is.
6. Located and select it the firmware file.
7. Click **Upload**.

Settings Management



Save Configuration Settings Click **Save** to export settings to your computer.

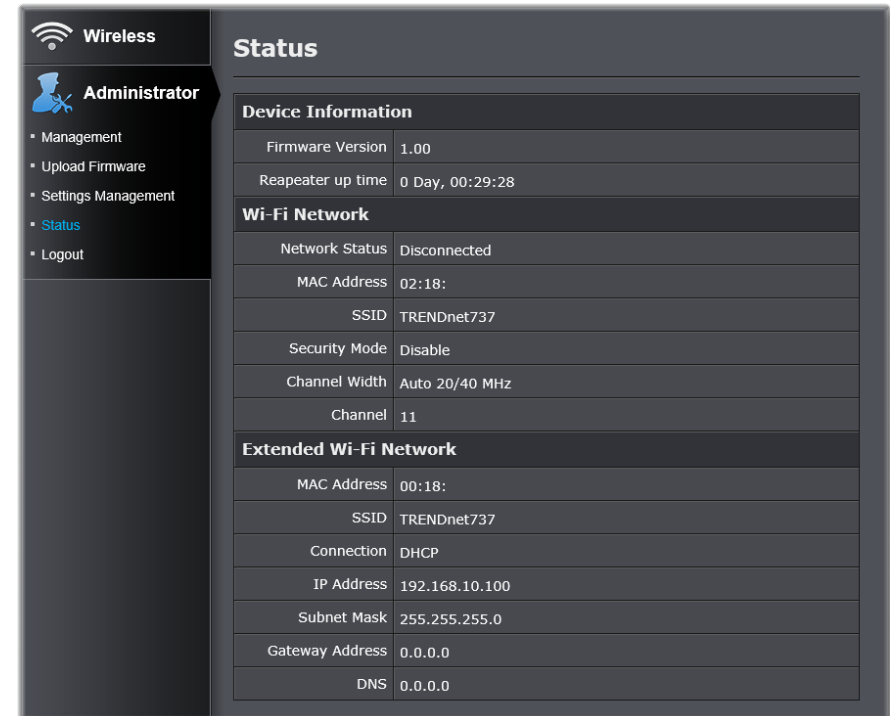
Restore Configuration Settings To restore settings previously saved on your computer, click **Browse...** to select a configuration file and then click **Load** to import the previous settings.

Restore Factory Default Settings Click **Restore** to restore settings to factory defaults.

System Reboot Click **Restart** to reboot your TEW-737HRE.

Status

Click **Status** on the menu to list the TEW-737HRE status details.



Technical Specifications

Wireless Modulation:	OFDM and CCK
Antenna :	Built in antenna
Frequency:	2.412 - 2.462GHz FCC 2.412 - 2.472GHz ETSI
Data Rate:	802.11n: up to 300 Mbps (Auto Fallback) 802.11g: up to 54 Mbps 802.11b: up to 11 Mbps
Output Power:	802.11b: FCC: 20 dBm (typical), CE: 18 dBm (typical) @ 11 Mbps 802.11g: 18 dBm (typical) @ 54 Mbps 802.11n: 17 dBm (typical) @ 300 Mbps
Receiving Sensitivity:	802.11b: -90 dBm (typical) @ 11 Mbps 802.11g: -72 dBm (typical) @ 54 Mbps 802.11n: -66 dBm (typical) @ 300 Mbps
Encryption:	64/128-bit WEP, WPA / WPA2-PSK Channels 1-11 (FCC), 1-13 (ETSI)

**Maximum wireless signal rates are referenced from IEEE 802.11 theoretical specifications. Actual data throughput and coverage will vary depending on interference, network traffic, building materials and other conditions.*

Troubleshooting

Situation: I typed `http://tew-737hre` but I am not able to access the unit. What should I do?

Solution:

The host name resolution is good for most systems, including Windows, OS X, and iOS. Please enter the IP address (default: 192.168.10.100) if you experience difficulty in accessing the range extender.

Proceed following steps for correct name resolution.

1. Turn the TEW-737HRE's power switch on.
2. Reset the device to factory default settings by pushing the reset button for 5 seconds.
3. Make sure you have a good wireless connection to the default SSID: **TRENDnet737** or connect to the TEW - 737HRE using a network cable.
4. Make sure your laptop/PC is not joined to any network domain.
5. Open a browser and type **`http://tew - 737hre`** (You must lead with **`http://`** to resolve the host name)

Situation: How do I reset the device to factory default?

Solution:

1. Use a pin such as a staple to press and hold the reset button at the bottom of the TEW-737HRE for 5 seconds.
2. You can also reset from the management page.

Situation: I typed `http://192.168.10.100` but I am not able to access the unit. What should I do?

Solution:

1. Turn the TEW-737HRE's switch on.
2. Reset the device to factory default settings by pushing the reset button for 5 seconds.
3. Make sure you have a good wireless connection to the default SSID: **TRENDnet737** or connect to the TEW-737HRE using a network cable.
4. Make sure your computer has no other network connections. For example, if you access TEW-737HRE through wireless, disconnect your Ethernet cable.
5. Open a browser and type `http://192.168.10.100`

Situation: How do I make sure my unit is connected to a router or an AP?

Solution:

The LED will turn solid green when the TEW-737HRE is successfully connected to a router or an AP.

Situation: How can I access the TEW-737HRE once it is setup?

Solution:

You can use its host name (`http://tew-737hre`) or IP address to access the TEW-737HRE. After repeater setup, the TEW737HRE will get an IP address from your router (DHCP). Check the DHCP client list on your router if you want to access the TEW-737HRE with its IP address.

Regulations

Federal Communication Commission Interference Statement

This equipment has been tested and found to comply with the limits for a Class B digital device, pursuant to Part 15 of the FCC Rules. These limits are designed to provide reasonable protection against harmful interference in a residential installation. This equipment generates uses and can radiate radio frequency energy and, if not installed and used in accordance with the instructions, may cause harmful interference to radio communications. However, there is no guarantee that interference will not occur in a particular installation. If this equipment does cause harmful interference to radio or television reception, which can be determined by turning the equipment off and on, the user is encouraged to try to correct the interference by one of the following measures:

- Reorient or relocate the receiving antenna.
- Increase the separation between the equipment and receiver.
- Connect the equipment into an outlet on a circuit different from that to which the receiver is connected.
- Consult the dealer or an experienced radio/TV technician for help.

FCC Caution: Any changes or modifications not expressly approved by the party responsible for compliance could void the user's authority to operate this equipment.

This device complies with Part 15 of the FCC Rules. Operation is subject to the following two conditions: (1) This device may not cause harmful interference, and (2) this device must accept any interference received, including interference that may cause undesired operation.



IMPORTANT NOTE:

FCC Radiation Exposure Statement

This equipment complies with FCC radiation exposure limits set forth for an uncontrolled environment. This equipment should be installed and operated with minimum distance 20cm between the radiator & your body.

This transmitter must not be co-located or operating in conjunction with any other antenna or transmitter.

The availability of some specific channels and/or operational frequency bands are country dependent and are firmware programmed at the factory to match the intended destination. The firmware setting is not accessible by the end user.

Industry Canada

This device complies with Industry Canada license-exempt RSS standard(s). Operation is subject to the following two conditions: (1) this device may not cause interference, and (2) this device must accept any interference, including interference that may cause undesired operation of the device.

Le présent appareil est conforme aux CNR d'Industrie Canada applicables aux appareils radio exempts de licence. L'exploitation est autorisée aux deux conditions suivantes: (1) l'appareil ne doit pas produire de brouillage, et (2) l'utilisateur de l'appareil doit accepter tout brouillage radioélectrique subi, même si le brouillage est susceptible d'en compromettre le fonctionnement.

Radiation Exposure Statement:

This equipment complies with IC radiation exposure limits set forth for an uncontrolled environment. This equipment should be installed and operated with minimum distance 20cm between the radiator & your body.

Déclaration d'exposition aux radiations:

Cet équipement est conforme aux limites d'exposition aux rayonnements IC établies pour un environnement non contrôlé. Cet équipement doit être installé et utilisé avec un minimum de 20 cm de distance entre la source de rayonnement et votre corps.

Europe – EU Declaration of Conformity

TRENDnet hereby declare that the product is in compliance with the essential requirements and other relevant provisions under our sole responsibility.



Safety

EN 60950-1:2006+A11:2009+A1:2010+A12:2011
IEC 60950-1:2005 (2nd Edition) Am 1:2009

EMC

EN 55022: 2010 + AC: 2011 Class B
EN 55024: 2010
EN 301 489-1 V1.9.2: 09-2011
EN 301 489-17 V2.2.1: 09-2012

Radio Spectrum & Health

EN 300 328 V1.8.1 : (2012-06) Class B
EN 50385: 2002

Energy Efficiency

Regulation (EC) No. 1275/2008, Regulation, No. 278/2009, No. 801/2013

This product is herewith confirmed to comply with the Directives.

Directives

Low Voltage Directive 2006/95/EC
EMC Directive 2004/108/EC
R&TTE Directive 1999/5/EC
Ecodesign Directive 2009/125/EC
RoHS Directive 2011/65/EU
REACH Regulation (EC) No. 1907/2006

This device is a 2.4 GHz wideband transmission system (transceiver), intended for use in all EU member states and EFTA countries, except in France and Italy where restrictive use applies.

In Italy the end-user should apply for a license at the national spectrum authorities in order to obtain authorization to use the device for setting up outdoor radio links and/or for supplying public access to telecommunications and/or network services.

This device may not be used for setting up outdoor radio links in France and in some areas the RF output power may be limited to 10 mW EIRP in the frequency range of 2454 – 2483.5 MHz. For detailed information the end-user should contact the national spectrum authority in France.

Česky [Czech]	TRENDnet tímto prohlašuje, že tento TEW-737HRE je ve shodě se základními požadavky a dalšími příslušnými ustanoveními směrnice 1999/5/ES, 2006/95/ES a 2009/125/ES.
Dansk [Danish]	Undertegnede TRENDnet erklærer herved, at følgende udstyr TEW-737HRE overholder de væsentlige krav og øvrige relevante krav i direktiv 1999/5/EF, 2006/95/EF og 2009/125/EF.
Deutsch [German]	Hiermit erklärt TRENDnet, dass sich das Gerät TEW-737HRE in Übereinstimmung mit den grundlegenden Anforderungen und den übrigen einschlägigen Bestimmungen der Richtlinie 1999/5/EG, 2006/95/EG und 2009/125/EG befindet.
Eesti [Estonian]	Käesolevaga kinnitab TRENDnet seadme TEW-737HRE vastavust direktiivi 1999/5/ EÜ, 2006/95/ EÜ ja 2009/125/ EÜ põhinõuetele ja nimetatud direktiivist tulenevatele teistele asjakohastele sätetele.
English	Hereby, TRENDnet, declares that this TEW-737HRE is in compliance with the essential requirements and other relevant provisions of Directive 1999/5/CE, 2006/95/CE and 2009/125/CE.
Español [Spanish]	Por medio de la presente TRENDnet declara que el TEW-737HRE cumple con los requisitos esenciales y cualesquiera otras disposiciones aplicables o exigibles de la Directiva 1999/5/CE, 2006/95/CE y 2009/125/CE.
Ελληνική [Greek]	ΜΕ ΤΗΝ ΠΑΡΟΥΣΑ ΤΡΕΝΔΝΕΤ ΔΗΛΩΝΕΙ ΟΤΙ ΤΕW-737ΗΡΕ ΣΥΜΜΟΡΦΩΝΕΤΑΙ ΠΡΟΣ ΤΙΣ ΟΥΣΙΩΔΕΙΣ ΑΠΑΙΤΗΣΕΙΣ ΚΑΙ ΤΙΣ ΛΟΙΠΕΣ ΣΧΕΤΙΚΕΣ ΔΙΑΤΑΞΕΙΣ ΤΗΣ ΟΔΗΓΙΑΣ 1999/5/ΕΚ, 2006/95/ΕΚ, 2009/125/ΕΚ και.
Français [French]	Par la présente TRENDnet déclare que l'appareil TEW-737HRE est conforme aux exigences essentielles et aux autres dispositions pertinentes de la directive 1999/5/CE, 2006/95/CE et 2009/125/CE.
Italiano [Italian]	Con la presente TRENDnet dichiara che questo TEW-737HRE è conforme ai requisiti essenziali ed alle altre disposizioni pertinenti stabilite dalla direttiva 1999/5/CE, 2006/95/CE e 2009/125/CE.
Latviski [Latvian]	Ar šo TRENDnet deklarē, ka TEW-737HRE atbilst Direktīvas 1999/5/EK, 2006/95/EK un 2009/125/EK būtiskajām prasībām un citiem ar to saistītajiem noteikumiem.
Lietuvių [Lithuanian]	Šiuo TRENDnet deklaruoja, kad šis TEW-737HRE atitinka esminius reikalavimus ir kitas 1999/5/EB, 2006/95/EB ir 2009/125/EB Direktyvos nuostatas.
Nederlands [Dutch]	Hierbij verklaart TRENDnet dat het toestel TEW-737HRE in overeenstemming is met de essentiële eisen en de andere

	relevante bepalingen van richtlijn 1999/5/EG, 2006/95/EG en 2009/125/EG.
Malti [Maltese]	Hawnhekk, TRENDnet, jiddikjara li dan TEW-737HRE jikkonforma mal-htigijiet essenzjali u ma provvedimenti oħrajn relevanti li hemm fid-Dirrettiva 1999/5/KE, 2006/95/KE u 2009/125/KE.
Magyar [Hungarian]	Alulírott, TRENDnet nyilatkozom, hogy a TEW-737HRE megfelel a vonatkozó alapvető követelményeknek és az 1999/5/EK, 2006/95/EK és a 2009/125/EK irányelv egyéb előírásainak.
Polski [Polish]	Niniejszym TRENDnet oświadcza, że TEW-737HRE jest zgodny z zasadniczymi wymogami oraz pozostałymi stosownymi postanowieniami Dyrektywy 1999/5/WE, 2006/95/WE i 2009/125/WE.
Português [Portuguese]	TRENDnet declara que este TEW-737HRE está conforme com os requisitos essenciais e outras disposições da Directiva 1999/5/CE, 2006/95/CE e 2009/125/CE.
Slovensko [Slovenian]	TRENDnet izjavlja, da je ta TEW-737HRE v skladu z bistvenimi zahtevami in ostalimi relevantnimi določili direktive 1999/5/ES, 2006/95/ES in 2009/125/ES.
Slovensky [Slovak]	TRENDnet týmto vyhlasuje, že TEW-737HRE spĺňa základné požiadavky a všetky príslušné ustanovenia Smernice 1999/5/ES, 2006/95/ES a 2009/125/ES.
Suomi [Finnish]	TRENDnet vakuuttaa täten että TEW-737HRE tyyppinen laite on direktiivin 1999/5/EY, 2006/95/EY ja 2009/125/EY oleellisten vaatimusten ja sitä koskevien direktiivin muiden ehtojen mukainen.
Svenska [Swedish]	Härmed intygar TRENDnet att denna TEW-737HRE står i överensstämmelse med de väsentliga egenskapskrav och övriga relevanta bestämmelser som framgår av direktiv 1999/5/EG, 2006/95/EG och 2009/125/EG.

RoHS

This product is RoHS compliant.



ErP Statement

Česky [Czech]	Toto síťové zařízení je rok Energy Související produkt (ErP ou dopisem), automaticky přepne do úsporného pohotovostního módu do 10 minut bez datového přenosu síly. Když přístroj nepoužíváte, lze jej ict vypnut pomocí tlačítka napájení, nebo jednoduše odpojte napájecí adaptér pro další úspory energie. Síťové standby: 1,95W Off Mode: 0,14W		
Dansk [Danish]	Denne netværksenhed er år Energy Related Produkt (ErP ou ved brev) skifter automatisk til en strømbesparende standby mode Inden for 10 minutter uden datatransmission. Når apparatet ikke er i brug kan det være ict drevet ned ved hjælp afbryderknappen, eller blot afbryde strømforsyningen til yderligere energibesparelser. Networked standby:1.95 watt Slukket tilstand: 0.14. watt		
Deutsch [German]	Dieses Netzwerkgerät ist ein Energy Related Product (ErP), das innerhalb von 10 Minuten ohne Datenübertragung automatisch in einen Stromsparmodus umschaltet. Wenn das Gerät nicht verwendet wird, kann es über die Ein-/Austaste heruntergefahren werden, oder ziehen Sie für zusätzliche Stromersparnis das Netzgerät aus der Steckdose. Vernetzt und in Bereitschaft: 1.95 Watt Ausgeschaltet: 0.14 Watt		
Eesti [Estonian]	See võrguseade on aasta Energy Related Toode (ERP ou kirjas) Automaatselt lülitub energiasäästurežiimi ooterežiimis mood 10 minuti jooksul ei andmeedastust. Kui seade ei ole kasutuses võib see olla IKT väljalülitamisel kasutades toitenuppu või lihtsalt ühendage toiteadapter täiendava energiasäästu. Võrku ooterežiimis: 1.95W Väljalülitatud olek: 0.14W		
English	This network device is an Energy Related Product (ErP) that automatically switches to a power saving standby mode within 10 minutes of no data transmission. When the device is not in use it can be powered down using its power button, or simply disconnect the power adapter for additional energy savings. Networked standby mode:1.95 watts Off mode: 0.14 watts		
Español [Spanish]	Este dispositivo de red es un producto relacionado con la energía (ErP) que pasa automáticamente a un modo en espera, de ahorro de energía, tras 10 minutos de ausencia de transmisión de datos. Cuando el dispositivo no está en uso, se		puede apagar utilizando el botón de alimentación, o simplemente desconectar el adaptador de corriente para optimizar el ahorro de energía. Modo de espera en red: 1.95W Modo apagado: 0.14W
Ελληνική [Greek]	Αυτή η συσκευή δικτύου είναι η χρονιά Ενέργειας Σχετικά Προϊόν (ERP ou με επιστολή) μεταβαίνει αυτόματα σε κατάσταση εξοικονόμησης μόδας Μέσα σε 10 λεπτά χωρίς μετάδοση δεδομένων εξουσία. Όταν η συσκευή δεν είναι σε χρήση μπορεί να ΤΠΕ κινούνται προς τα κάτω χρησιμοποιώντας το κουμπί τροφοδοσίας, ή απλά αποσυνδέστε το τροφοδοτικό για πρόσθετη εξοικονόμηση ενέργειας. Δικτυωμένη αναμονής: 1.95 watts Κατάσταση εκτός λειτουργίας: 0.14watts		
Français [French]	Ce périphérique réseau est un Energy Related Product (ErP) qui passe automatiquement en mode veille, économisant l'énergie, après 10 minutes sans transfert de données. Lorsque le périphérique n'est pas utilisé, il peut être éteint en utilisant le bouton d'alimentation, ou simplement déconnecté en débranchant l'adaptateur secteur pour obtenir davantage d'économies d'énergie. Mode veille en réseau : 1.95Watt Mode éteint : 0.14Watt		
Italiano [Italian]	Questo apparato di rete è un Energy Related Product (ErP) il quale commuta automaticamente in una modalità standby entro 10 minuti dall'interruzione della trasmissione di dati. Quando l'apparato non viene utilizzato, può essere spento tramite il tasto di accensione, o si può scollegare l'alimentatore, per ottenere un maggior risparmio di energia. Modalità standby in rete: 1.95watt Modalità spento: 0.14watt		
Latviski [Latvian]	Šis tīkls ierīce ir gads enerģiju saistītiem ražojumiem (ERP ou ar vēstuli) Automātiski pārslēdzas uz enerģijas taupīšanas gaidstāves modi laikā 10 minūšu laikā bez datu pārraides. Ja ierīce nav izmantota to var IKT powered leju, izmantojot barošanas pogu, vai vienkārši atvienojiet strāvas adapteris papildu enerģijas ietaupījumu. Networked gaidīšanas: 1.95vati Izslēgts režīms: 0.14vati		
Lietuvių [Lithuanian]	Šis tinklas įrenginys metus Energijos susiję produktai (ERP ou laišku) Automatiškai persijungia į energijos taupymo būdėjimo mados Per 10 minučių be duomenų perdavimo. Kai prietaisas nenaudojamas, jis gali būti ict išjungtas naudojant maitinimo		

	mygtuką, arba tiesiog atjunkite maitinimo adapterį sutaupyti dar daugiau energijos. Tinklo budėjimo: 1.95W Išjungimo būseną: 0.14W
Nederlands [Dutch]	Dit netwerkkapparaat is jaar-energie gerelateerde product (ErP ou per brief) schakelt automatisch naar een energiebesparende stand-by mode Binnen 10 minuten geen gegevensoverdracht. Wanneer het apparaat niet in gebruik kan worden ict uitgeschakeld met behulp van uit-knop, of koppelt gewoon een oplader voor een extra energiebesparing. Networked standby: 1.95watt Off Mode: 0.14watt
Malti [Maltese]	Dan il-netwerk apparat huwa sena Energija Prodott Related (ERP ou b'ittra) Awtomatikament swiċċijiet għal iffrankar ta 'energija moda standby Fi żmien 10 minuta ta' l-ebda trażmissjoni tad-data. Meta l-mezz ma jkunx qed jintuża jista 'jiġi ICT powered isfel bl-użu buttuna l-energija, jew sempliċiment skonnattja l-adapter energija għal iffrankar addizzjonali tal-energija. Standby f'network: 1.95watts Modalità Mitfija: 0.14watts
Magyar [Hungarian]	Ez a hálózat a készülék éves energiával kapcsolatos termék (ErP ou levélben), automatikusan átvált egy energiatakarékos készenléti mód 10 percen belül nincs adatátvitel. Ha a készülék nincs használatban, akkor lehet, IKT áramtalanítani a bekapcsoló gombot, vagy egyszerűen húzza ki a hálózati adaptert a további energia-megtakarítás. Hálózatba készenlét: 1.95watt Kikapcsolt üzemmód: 0.14watt
Polski [Polish]	To urządzenie sieciowe jest rok energetyczna produktu zwanego (ErP ou listownie) automatycznie przełącza się na energooszczędny gotowości modę W ciągu 10 minut bez transmisji danych. Kiedy urządzenie nie jest używane, można go ICT wyłączony za pomocą przycisku zasilania, lub po prostu odłączyć zasilacz na dodatkowe oszczędności energii. Networked standby: 1.95watów Tryb wyłączenia: 0.14watów
Português [Portuguese]	Este dispositivo de rede é um Produto de Consumo de Energia (ErP) que alterna automaticamente para modo de espera com economia de energia após 10 minutos sem transmissão de dados. Quando o dispositivo não está sendo usado pode ser desligado no botão de energia, ou simplesmente desligando o adaptador de corrente para economia de energia adicional. Modo de espera em rede: 1.95watts

	Modo off: 0.14watts
Slovensko [Slovenian]	Ta mreža naprava je leto Energy Podobni izdelek (ErP ou z dopisom), samodejno preklopi na varčevanje z energijo v stanju pripravljenosti moda roku 10 minut brez prenosa podatkov. Ko je naprava ni v uporabi, je lahko ict napaja navzdol z gumbom za vklop, ali pa preprosto odklopite napajalnik za dodatne prihranke energije. Networked pripravljenosti: 1.95W Način izklopa: 0.14W
Slovensky [Slovak]	Toto sieťové zariadenie je rok Energy Súvisiaci produkt (ErP ou listom), automaticky prepne do úsporného pohotovostného módu do 10 minút bez dátového prenosu sily. Keď prístroj nepoužívate, možno ho ict vypnúť pomocou tlačidla napájania, alebo jednoducho odpojte napájací adaptér pre ďalšie úspory energie. Sieťové standby: 1,95W Off Mode: 0,14W
Suomi [Finnish]	Tämä verkkolaite on vuosi Energy Related Product (ErP ou kirjeitse) Automaattinen vaihto virransäästö valmiustilassa muoti 10 minuutin kuluessa tiedon siirto. Kun laite ei ole käytössä se voidaan ICT sammutettu käyttämällä virtakytkintä, tai yksinkertaisesti irrota virtalähde ylimääräisiä energiasäästöjä. Verkottunut valmiustilassa: 1.95wattia Pois päältä -tila: 0.14 wattia
Svenska [Swedish]	Denna nätverksenhet är år Energy relaterad produkt (ErP ou per brev) Växlar automatiskt till ett energisparande vänteläge mode Inom 10 minuter utan dataöverföring. När enheten inte används kan det vara ict avstängd med hjälp av strömbrytaren, eller helt enkelt koppla loss nätadaptern för ytterligare energibesparingar. Networked standby: 1.95watt Avstängd: 0.14watt

Limited Warranty

TRENDnet warrants its products against defects in material and workmanship, under normal use and service, for the following lengths of time from the date of purchase.

- TEW-737HRE – 3 Years Warranty

If a product does not operate as warranted during the applicable warranty period, TRENDnet shall reserve the right, at its expense, to repair or replace the defective product or part and deliver an equivalent product or part to the customer. The repair/replacement unit's warranty continues from the original date of purchase. All products that are replaced become the property of TRENDnet. Replacement products may be new or reconditioned. TRENDnet does not issue refunds or credit. Please contact the point-of purchase for their return policies.

TRENDnet shall not be responsible for any software, firmware, information, or memory data of customer contained in, stored on, or integrated with any products returned to TRENDnet pursuant to any warranty.

There are no user serviceable parts inside the product. Do not remove or attempt to service the product by any unauthorized service center. This warranty is voided if (i) the product has been modified or repaired by any unauthorized service center, (ii) the product was subject to accident, abuse, or improper use (iii) the product was subject to conditions more severe than those specified in the manual.

Warranty service may be obtained by contacting TRENDnet within the applicable warranty period and providing a copy of the dated proof of the purchase. Upon proper submission of required documentation a Return Material Authorization (RMA) number will be issued. An RMA number is required in order to initiate warranty service support for all TRENDnet products. Products that are sent to TRENDnet for RMA service must have the RMA number marked on the outside of return packages and sent to TRENDnet prepaid, insured and packaged appropriately for safe shipment. Customers shipping from outside of the USA and Canada are responsible for return shipping fees. Customers shipping from outside of the USA are responsible for custom charges, including but not limited to, duty, tax, and other fees.

WARRANTIES EXCLUSIVE: IF THE TRENDNET PRODUCT DOES NOT OPERATE AS WARRANTED ABOVE, THE CUSTOMER'S SOLE REMEDY SHALL BE, AT TRENDNET'S OPTION, REPAIR OR REPLACE. THE FOREGOING WARRANTIES AND REMEDIES ARE EXCLUSIVE AND ARE IN LIEU OF ALL OTHER WARRANTIES, EXPRESSED OR IMPLIED, EITHER IN FACT OR BY OPERATION OF LAW,

STATUTORY OR OTHERWISE, INCLUDING WARRANTIES OF MERCHANTABILITY AND FITNESS FOR A PARTICULAR PURPOSE.

TRENDNET NEITHER ASSUMES NOR AUTHORIZES ANY OTHER PERSON TO ASSUME FOR IT ANY OTHER LIABILITY IN CONNECTION WITH THE SALE, INSTALLATION MAINTENANCE OR USE OF TRENDNET'S PRODUCTS.

TRENDNET SHALL NOT BE LIABLE UNDER THIS WARRANTY IF ITS TESTING AND EXAMINATION DISCLOSE THAT THE ALLEGED DEFECT IN THE PRODUCT DOES NOT EXIST OR WAS CAUSED BY CUSTOMER'S OR ANY THIRD PERSON'S MISUSE, NEGLIGENCE, IMPROPER INSTALLATION OR TESTING, UNAUTHORIZED ATTEMPTS TO REPAIR OR MODIFY, OR ANY OTHER CAUSE BEYOND THE RANGE OF THE INTENDED USE, OR BY ACCIDENT, FIRE, LIGHTNING, OR OTHER HAZARD.

LIMITATION OF LIABILITY: TO THE FULL EXTENT ALLOWED BY LAW TRENDNET ALSO EXCLUDES FOR ITSELF AND ITS SUPPLIERS ANY LIABILITY, WHETHER BASED IN CONTRACT OR TORT (INCLUDING NEGLIGENCE), FOR INCIDENTAL, CONSEQUENTIAL, INDIRECT, SPECIAL, OR PUNITIVE DAMAGES OF ANY KIND, OR FOR LOSS OF REVENUE OR PROFITS, LOSS OF BUSINESS, LOSS OF INFORMATION OR DATA, OR OTHER FINANCIAL LOSS ARISING OUT OF OR IN CONNECTION WITH THE SALE, INSTALLATION, MAINTENANCE, USE, PERFORMANCE, FAILURE, OR INTERRUPTION OF THE POSSIBILITY OF SUCH DAMAGES, AND LIMITS ITS LIABILITY TO REPAIR, REPLACEMENT, OR REFUND OF THE PURCHASE PRICE PAID, AT TRENDNET'S OPTION. THIS DISCLAIMER OF LIABILITY FOR DAMAGES WILL NOT BE AFFECTED IF ANY REMEDY PROVIDED HEREIN SHALL FAIL OF ITS ESSENTIAL PURPOSE.

Governing Law: This Limited Warranty shall be governed by the laws of the state of California.

Some TRENDnet products include software code written by third party developers. These codes are subject to the GNU General Public License ("GPL") or GNU Lesser General Public License ("LGPL").

Go to <http://www.trendnet.com/gpl> or <http://www.trendnet.com> Download section and look for the desired TRENDnet product to access to the GPL Code or LGPL Code. These codes are distributed WITHOUT WARRANTY and are subject to the copyrights of the developers. TRENDnet does not provide technical support for these codes. Please go to <http://www.gnu.org/licenses/gpl.txt> or <http://www.gnu.org/licenses/lgpl.txt> for specific terms of each license.

February 24, 2015

TEW-737HRE v1.1R User's Guide V1.3



Product Warranty Registration

Please take a moment to register your product online.
Go to TRENDnet's website at <http://www.trendnet.com/register>

TRENDnet
20675 Manhattan Place
Torrance, CA 90501. USA