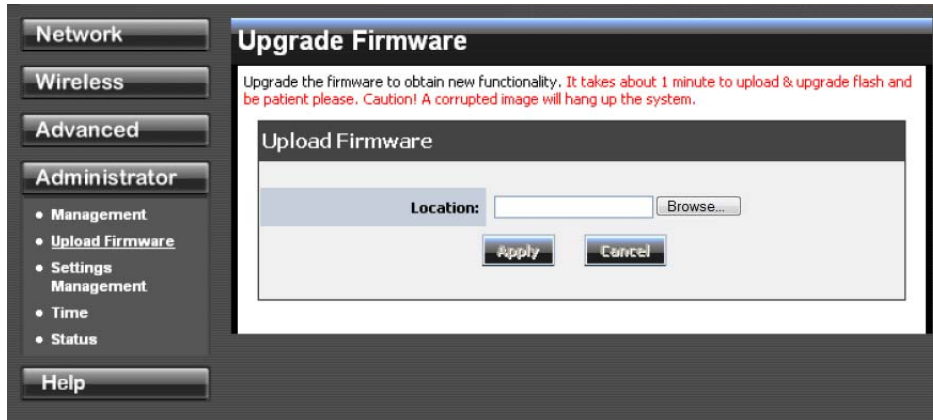


Firmware Upgrade Procedures

1. Save the downloaded firmware file to your PC
2. Right click on the downloaded file and select **Extract All** or **Extract Here** option
 - a. Make sure to remember the location where the extracted file is saved will be saved.
3. Log into to the router's configuration page (default IP is 192.168.10.1)
4. Navigate to the **Administrator** section and select **Upload Firmware** option



5. Click **Browse** and select firmware file (.bin) in the extracted file and the click **Apply** button to load
6. Wait until the firmware upload completed and the device reboot.
7. The firmware upgrade is completed.