




Guía de instalación rápida 

TEW-684UB

1.01

Table of Contents

Español	1
1. Antes de iniciar	1
2. Cómo se instala	2
3. Cómo usar el adaptador inalámbrico	5
<hr/>	
Troubleshooting	7
Wireless Tips	8



Contenidos del paquete

- TEW-684UB
- CD-ROM (Herramienta y Guía del usuario)
- Guía de instalación rápida multilingüe
- Cable USB (100 centímetros / 3.28 pies)

Requisitos del sistema

- Puertos USB: 1.1 ó 2.0 (Descargo de responsabilidad: Cuando conecte el TEW-684UB a un puerto USB 1.1, la velocidad máxima será de 12 Mbps)
- Unidad de CD-ROM

Requisitos de la herramienta de software

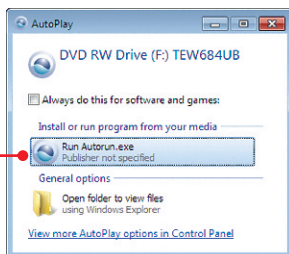
Compatible con sistemas operativos	CPU	Memoria
Windows 7 (32/64-bit)	1GHz o superior	1GB RAM o superior
Windows Vista (32/64-bit)	800MHz o superior	512MB RAM o superior
Windows XP (32/64-bit)	300MHz o superior	256MB RAM o superior

2. Cómo se instala

¡Importante! NO instale el TEW-684UB hasta que no se le indique.

1. Introduzca el **CD-ROM de la herramienta y la Guía del usuario** en la unidad de CD-ROM de su PC.

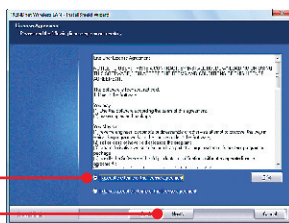
2. Haga clic en **Run Autorun.exe** (sólo para Windows 7/Vista).



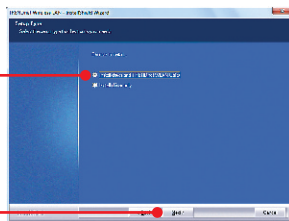
3. Haga clic en **Install Utility** (Instalar herramienta).



4. Seleccione **I accept the terms in the license agreement** (Acepto los términos de este acuerdo de licencia). Haga clic en **Next** (Siguiente).



5. Seleccione **Instalar controlador y el programa TRENDnet WLAN** y luego haga clic en **Siguiente**.



ENGLISH

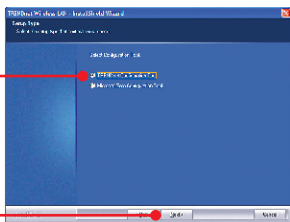
Français

DEUTSCH

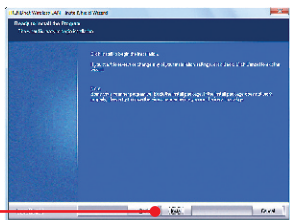
ESPAÑOL

Русский

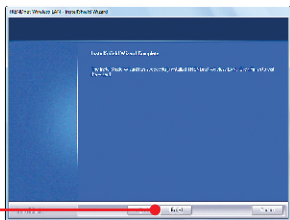
6. Seleccione **Herramienta de configuración TRENDnet** y luego haga clic en **Siguiente** (Windows XP).



7. Haga clic en **Install**.



8. Haga clic en **Finish**.



9. Con el cable USB suministrado, conecte la punta Micro-B del cable al TEW-684UB.



10. Conecte la punta tipo A (la otra punta del cable USB) a un puerto USB disponible en su ordenador.



11. El PC lo detectará de manera automática e instalará los controladores.

La instalación ha sido completada

Para obtener información más detallada sobre la configuración así como de las configuraciones avanzadas del **TEW-684UB**, por favor consulte la sección de resolución de problemas, el CD-ROM de la Guía del Usuario, o el sitio Web de Trendnet en <http://www.trendnet.com>.

3. Cómo usar el adaptador inalámbrico

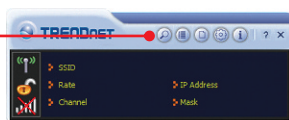
ENGLISH

1. En la esquina inferior derecha de la pantalla haga doble clic en el ícono programa Inalámbrico de TRENDnet. En Windows 7, Si el ícono no apareceno, haga clic en la flecha para mostrar íconos oculto.



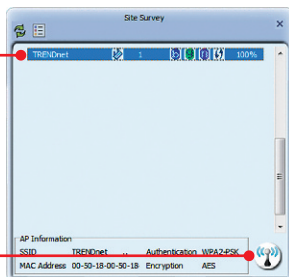
FRANÇAIS

2. Haga clic en el ícono **Encuesta del sitio**.



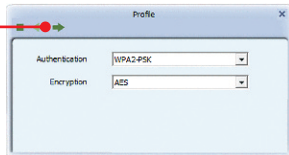
DEUTSCH

3. Seleccione un SSID y luego haga clic en el ícono conectar. El SSID es el nombre de red inalámbrica de su red inalámbrica (Enrutador inalámbrico o punto de acceso inalámbrico).



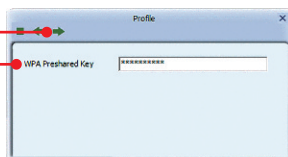
ESPAÑOL

4. Si el cifrado está habilitado en su red inalámbrica (por ej. Punto de acceso, enrutador inalámbrico), deberá seleccionar el tipo de cifrado y autenticación correctos. Haga clic en el ícono **Siguiente**.



РУССКИЙ

5. Introduzca la clave pre compartida (contraseña de red inalámbrica) y luego haga clic en el ícono **Siguiente** para guardar los ajustes inalámbricos.



La configuración inalámbrica ha finalizado

Para obtener información más detallada sobre la configuración así como de las configuraciones avanzadas del **TEW-684UB**, por favor consulte la sección de resolución de problemas, el CD-ROM de la Guía del Usuario, o el sitio Web de Trendnet en <http://www.trendnet.com>.

Registre su producto

Para asegurar los más altos niveles de servicio y apoyo al cliente, registre su producto en línea en: www.trendnet.com/register
Gracias por elegir TRENDnet

ENGLISH

FRANÇAIS

DEUTSCH



ESPAÑOL

РУССКИЙ

1. I inserted the Utility & User's Guide CD-ROM into my computer's CD-ROM Drive and the installation menu does not appear automatically. What should I do?




1. For Windows 7, if the installation menu does not appear automatically, click on the Windows Icon on the bottom left hand corner of the screen, click the "Search programs and files" box, and type D:\Autorun.exe, where "D" in "D:\Autorun.exe" is the letter assigned to your CD-ROM Drive, and then press the ENTER key on your keyboard.
2. For Windows Vista, if the installation menu does not appear automatically, click on the Windows Icon on the bottom left hand corner of the screen, click on the "Start Search" box, and type D:\Autorun.exe, where "D" in "D:\Autorun.exe" is the letter assigned to your CD-ROM Drive, and then press the ENTER key on your keyboard.
3. For Windows XP, if the window does not appear automatically, click Start, click Run and type D:\Autorun.exe where "D" in "D:\Autorun.exe" is the letter assigned to your CD-ROM Drive, and then press the ENTER key on your keyboard.

2. I completed all the steps in the quick installation guide, but my Wireless USB Adapter is not connecting to my wireless network (e.g. wireless router or access point). What should I do?

1. Verify that the SSID (Network Name) matches your wireless router or access point's SSID (Network Name).
2. Please check with your network administrator for the security key in order to access the secured wireless access point or router. Please refer to the User's Guide for more information regarding wireless network security.
3. Check your TCP/IP properties to ensure that Obtain an IP address automatically is selected.
4. Double-click the TRENDnet Wireless Utility icon, click the Site Survey icon () and then click the Rescan icon () to check if your SSID (Network Name) for your wireless network is listed.
5. Please refer to the Wireless tips section if you continue to have wireless connectivity problems.

3. Windows is unable to recognize my hardware. What should I do?

1. Make sure your computer meets the minimum requirements as specified in Section 1 of this quick installation guide.
2. You must complete the installation of the TRENDnet Wireless Utility (as described in Section 2) before connecting the Wireless USB Adapter to your computer.
3. Connect the Wireless USB Adapter to a different USB port on your computer.
4. Verify the USB Adapter's LEDs are working properly. Please see the table below:

LED/Button	Color	Sequence	Definition
 Power	Green	On	Device is on
	N/A	Off	Device is off
 Wireless Link/Act LED	Green	On	Wireless LAN is on or enabled
	Green	Blinking	Wireless data transmission
	N/A	Off	Wireless LAN is off or disabled
 WPS LED	Green	On	WPS authentication process is complete
	Green	Blinking	WPA authentication process is ongoing
	N/A	Off	WPS is not activated or disabled
WPS Button	N/A	N/A	Hold 3 seconds to activate WPS

4. I cannot open the TRENDnet Wireless Utility. What should I do?

Access your device manager to make sure the adapter is installed properly.

1. To access the device manager on Windows 7, click on the Windows icon on the bottom left-hand corner, click **Computer**, click **System Properties** and then click **Device Manager**.
2. To access the device manager on Windows Vista, right-click **Computer**, click **Properties** and then click **Device Manager**.
3. To access the device manager on Windows XP, right-click **My Computer**, click **Properties**, click the **Hardware** tab, and then click **Device Manager**.

If you see a networking device with a yellow question mark or exclamation point:

1. Uninstall the device from device manager
2. Remove the adapter from the computer
3. Click the Windows / Start icon, click All Programs, click TRENDnet and then click Uninstall.
4. Reinstall the adapter. See Section 2. **How to Install**.

If you still encounter problems or have any questions regarding the **TEW-684UB**, please refer to the User's Guide included on the Utility & User's Guide CD-ROM or contact TRENDnet's Technical Support Department.

The following are some general wireless tips to help minimize the impact of interference within an environment.

Assign your network a unique SSID

Do not use anything that would be identifying like “Smith Family Network”. Choose something that you would easily identify when searching for available wireless networks.

Do not turn off the SSID broadcast

The SSID broadcast is intended to be on and turning it off can cause connectivity issues. The preferred method of securing a wireless network is to choose a strong form of encryption with a strong and varied encryption key.

Note: after setting up the SSID, encryption type and encryption key/passphrase, please make a note of them for future reference. You will need this information to connect your wireless computers to the wireless router/access point.

Change the channel

Most wireless access points and routers are defaulted to channel 6. If you have a site survey tool that will display the channels you can plan your channel selection around neighboring access points to minimize interference from them. If your site survey tool does not display the channel try using channels 1 or 11.

If you are using 802.11n you should be securing the network with WPA2 security.

Note: Due to Wi-Fi certification considerations if you choose WEP, WPA or WPA2-TKIP encryption this device may operate in legacy wireless mode (802.11b/g). You may not get 802.11n performance as these forms of encryption are not supported by the 802.11n specification.

Please also make sure that the wireless hardware is not placed in any type of shelving or enclosures.

Avoid stacking hardware on top of each other to prevent overheating issues

Maintain enough free space around the hardware for good ventilation and airflow. There should also be plenty of free space around the antennas to allow the wireless signal to propagate.

There are a number of other environmental factors that can impact the range of wireless devices.

1. Adjust your wireless devices so that the signal is traveling in a straight path, rather than at an angle. The more material the signal has to pass through the more signal you will lose.
2. Keep the number of obstructions to a minimum. Each obstruction can reduce the range of a wireless device. Position the wireless devices in a manner that will minimize the amount of obstructions between them.

3. Building materials can have a large impact on your wireless signal. In an indoor environment, try to position the wireless devices so that the signal passes through less dense material such as dry wall. Dense materials like metal, solid wood, glass or even furniture may block or degrade the signal.
4. Antenna orientation can also have a large impact on your wireless signal. Use the wireless adapter's site survey tool to determine the best antenna orientation for your wireless devices.
5. Interference from devices that produce RF (radio frequency) noise can also impact your signal. Position your wireless devices away from anything that generates RF noise, such as microwaves, HAM radios, Walkie-Talkies and baby monitors.
6. Any device operating on the 2.4GHz frequency will cause interference. Devices such as 2.4GHz cordless phones or other wireless remotes operating on the 2.4GHz frequency can potentially drop the wireless signal. Although the phone may not be in use, the base can still transmit wireless signals. Move the phone's base station as far away as possible from your wireless devices.

If you are still experiencing low or no signal consider repositioning the wireless devices or installing additional access points. The use of higher gain antennas may also provide the necessary coverage depending on the environment.

Certifications

This equipment has been tested and found to comply with FCC and CE Rules.

Operation is subject to the following two conditions:

- (1) This device may not cause harmful interference.
- (2) This device must accept any interference received. Including interference that may cause undesired operation.



Waste electrical and electronic products must not be disposed of with household waste. Please recycle where facilities exist. Check with you Local Authority or Retailer for recycling advice.



NOTE: THE MANUFACTURER IS NOT RESPONSIBLE FOR ANY RADIO OR TV INTERFERENCE CAUSED BY UNAUTHORIZED MODIFICATIONS TO THIS EQUIPMENT. SUCH MODIFICATIONS COULD VOID THE USER'S AUTHORITY TO OPERATE THE EQUIPMENT.

ADVERTENCIA

En todos nuestros equipos se mencionan claramente las características del adaptador de alimentación necesario para su funcionamiento. El uso de un adaptador distinto al mencionado puede producir daños físicos y/o daños al equipo conectado. El adaptador de alimentación debe operar con voltaje y frecuencia de la energía eléctrica domiciliar existente en el país o zona de instalación.



TRENDnet[®]

Product Warranty Registration

Please take a moment to register your product online.
Go to TRENDnet's website at <http://www.trendnet.com/register>