




Guide d'installation rapide 

TEW-648UBM  
1.01

# Table of Contents

Français	1
1. Avant de commencer	1
2. Installation du matériel	2
3. Utilisation de l'adaptateur sans fil	5
Troubleshooting	6
Wireless Tips	7



## Contenu de l'emballage

- TEW-648UBM
- Un CD-ROM avec le pilote et les l'utilitaires
- Guide d'installation rapide en plusieurs langues

## Configuration du système

- USB port: 2.0 ou 1.1
- Lecteur de CD-ROM

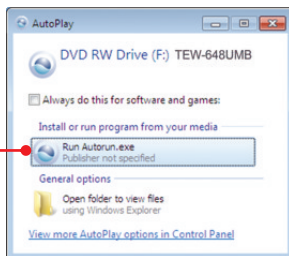
SE supportés	Microprocesseur	Mémoire
Windows 7 (32/64-bit)	1GHz ou superieur	1GB RAM ou superieur
Windows Vista (32/64-bit)	800MHz ou superieur	512MB RAM ou superieur
Windows XP (32/64-bit)	300MHz ou superieur	256MB RAM ou superieur

## 2. Installation du matériel

Important ! N'INSTALLEZ PAS l'adaptateur USB dans l'ordinateur avant qu'on ne vous le demande.

1. Insérez le CD-ROM avec l'utilitaire et le pilote dans le lecteur de CD-ROM de votre ordinateur et cliquez ensuite sur Install Utility (Installer l'utilitaire)

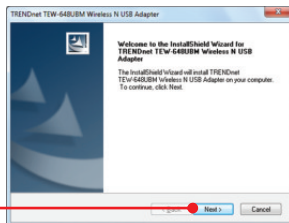
2. Cliquez sur Run Autorun.exe (Windows 7/Vista uniquement).



3. Cliquez sur Install Utility.



4. Cliquez ensuite sur Next (Suivant). Et suivez les instructions de l'écran de l'assistant d'installation (InstallShield Wizard instructions).



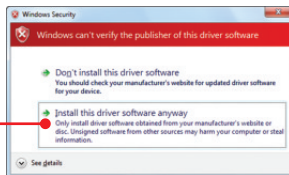
ENGLISH

FRANÇAIS

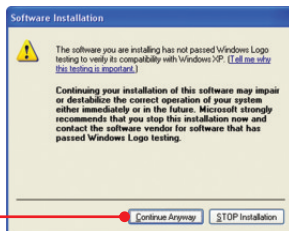
DEUTSCH

ESPAÑOL

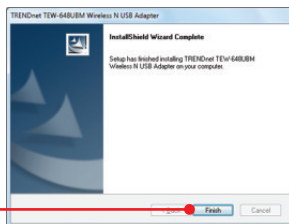
5. Cliquez sur Install this driver software anyway (Installer le pilote de ce logiciel de toute façon). (Windows 7/Vista).



6. Cliquez sur Continue Anyway (Continuer malgré tout). (Windows XP).



7. Cliquez ensuite sur Terminer (Finish).



8. Branchez l'adaptateur sans fil à un port USB disponible sur votre ordinateur.

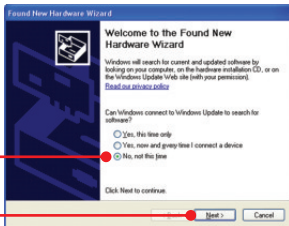


9. Enlevez le CD-ROM contenant le gestionnaire et les utilitaires de votre lecteur de CD-ROM.

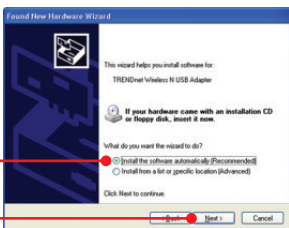
Remarque : Pour Windows 7/Vista, les pilotes s'installeront automatiquement. Poursuivez avec la partie 3 : Utilisation de l'adaptateur sans fil. Pour Windows XP poursuivez avec l'étape 10.

## Windows XP

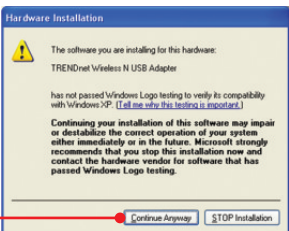
10. L'assistant nouveau matériel détecté apparaîtra, sélectionnez Non et cliquez ensuite sur Next (Suivant).



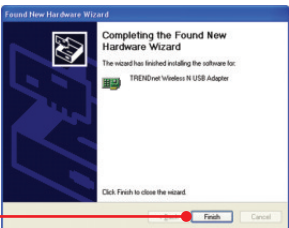
11. Sélectionnez Install the software automatically (Recommended) (Installer le logiciel automatiquement) (Recommandé) et cliquez sur Next (Suivant).



12. Cliquez sur Continue Anyway (Continuer malgré tout).



13. Cliquez sur Terminer (Finish).



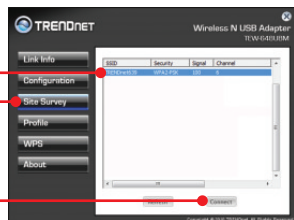
L'installation est maintenant complète

### 3. Utilisation de l'adaptateur sans fil

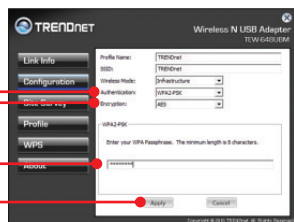
1. Dans le coin inférieur droit de l'écran, double-cliquez sur l'icône wireless configuration utility.



2. Cliquez sur Site Survey (Etude du site). Sélectionnez le SSID correspondant à votre point d'accès sans fil et cliquez sur Connexion.



3. Si le cryptage est activé sur votre point d'accès, sélectionnez le type d'Authentification, le mode de cryptage, saisissez la clé de cryptage et cliquez sur Appliquer.



#### La configuration sans fil est à présent terminée.

Si vous désirez des informations détaillées sur la configuration et les paramètres avancés du TEW-648UBM, veuillez consulter la rubrique Dépannage, le guide de l'utilisateur sur CD-ROM ou le site Internet de TRENDnet sur <http://www.trendnet.com>.

#### Enregistrez votre produit

Afin d'être sûr de recevoir le meilleur niveau de service clientèle et le meilleur support possibles, veuillez prendre le temps d'enregistrer votre produit en ligne sur: [www.trendnet.com/register](http://www.trendnet.com/register) \_Nous vous remercions d'avoir choisi TRENDnet.

1. I inserted the Utility & Driver CD-ROM into my computer's CD-ROM Drive and the installation menu does not appear automatically. What should I do?

1. For Windows 7, if the installation menu does not appear automatically, click on the Windows Icon on the bottom left hand corner of the screen, click the "Search programs and files" box, and type D:\Autorun.exe, where "D" in "D:\Autorun.exe" is the letter assigned to your CD-ROM Drive, and then press the ENTER key on your keyboard.
2. For Windows Vista, if the installation menu does not appear automatically, click on the Windows Icon on the bottom left hand corner of the screen, click on the "Start Search" box, and type D:\Autorun.exe, where "D" in "D:\Autorun.exe" is the letter assigned to your CD-ROM Drive, and then press the ENTER key on your keyboard.
3. For Windows XP, if the window does not appear automatically, click Start, click Run and type D:\Autorun.exe where "D" in "D:\Autorun.exe" is the letter assigned to your CD-ROM Drive, and then press the ENTER key on your keyboard.

2. I completed all the steps in the quick installation guide, but my Wireless USB Adapter is not connecting to my access point. What should I do?

1. Verify that the SSID matches your wireless router or access point's SSID.
2. Please check with your network administrator for security key in order to access a secured wireless access point or router. Please refer to the User's Guide for more information regarding wireless network security.
3. Check your TCP/IP properties to ensure that Obtain an IP address automatically is selected.
4. Double-click the Wireless Configuration Utility icon, click Site Survey and then click Refresh to check if there are any available wireless networks listed.

3. Windows is unable to recognize my hardware. What should I do?

1. Make sure your computer meets the minimum requirements as specified in Section 1 of this quick installation guide.
2. You must complete the installation of the Wireless Configuration Utility (as described in Section 2) before connecting the Wireless USB Adapter to your computer.
3. Connect the Wireless USB Adapter to a different USB port on your computer.

4. I cannot open the Wireless Configuration Utility. What should I do?

Access your device manager to make sure the adapter is installed properly. If you see a networking device with a yellow question mark or exclamation point, you will need to reinstall the device and/or the drivers.

1. To access the device manager on Windows 7, click on the Windows icon on the bottom left-hand corner, click Computer, click System Properties and then click Device Manager.
2. To access the device manager on Windows Vista, right-click Computer, click Properties and then click Device Manager.
3. To access the device manager on Windows XP, right-click My Computer, click Properties, click the Hardware tab, and then click Device Manager.

If you still encounter problems or have any questions regarding the TEW-648UBM, please refer to the User's Guide included on the Utility & Driver CD-ROM or contact TRENDnet's Technical Support Department.



The following are some general wireless tips to help minimize the impact of interference within an environment.

### Assign your network a unique SSID

Do not use anything that would be identifying like "Smith Family Network". Choose something that you would easily identify when searching for available wireless networks.

### Do not turn off the SSID broadcast

The SSID broadcast is intended to be on and turning it off can cause connectivity issues. The preferred method of securing a wireless network is to choose a strong form of encryption with a strong and varied encryption key.

**Note: after setting up the SSID, encryption type and encryption key/passphrase, please make a note of them for future reference. You will need this information to connect your wireless computers to the wireless router/access point.**

### Change the channel

Most wireless access points and routers are defaulted to channel 6. If you have a site survey tool that will display the channels you can plan your channel selection around neighboring access points to minimize interference from them. If your site survey tool does not display the channel try using channels 1 or 11.

### Change the channel bandwidth

If you are using 802.11n you should be securing the network with WPA2 security.

**Note: Due to Wi-Fi certification considerations if you choose WEP, WPA or WPA2-TKIP encryption this device may operate in legacy wireless mode (802.11b/g). You may not get 802.11n performance as these forms of encryption are not supported by the 802.11n specification.**

### Avoid stacking hardware on top of each other to prevent overheating issues

Maintain enough free space around the hardware for good ventilation and airflow. There should also be plenty of free space around the antennas to allow the wireless signal to propagate. Please also make sure that the wireless hardware is not placed in any type of shelving or enclosures.

There are a number of other environmental factors that can impact the range of wireless devices.

1. Adjust your wireless devices so that the signal is traveling in a straight path, rather than at an angle. The more material the signal has to pass through the more signal you will lose.
2. Keep the number of obstructions to a minimum. Each obstruction can reduce the range of a wireless device. Position the wireless devices in a manner that will minimize the amount of obstructions between them.

3. Building materials can have a large impact on your wireless signal. In an indoor environment, try to position the wireless devices so that the signal passes through less dense material such as dry wall. Dense materials like metal, solid wood, glass or even furniture may block or degrade the signal.
4. Antenna orientation can also have a large impact on your wireless signal. Use the wireless adapter's site survey tool to determine the best antenna orientation for your wireless devices.
5. Interference from devices that produce RF (radio frequency) noise can also impact your signal. Position your wireless devices away from anything that generates RF noise, such as microwaves, HAM radios, Walkie-Talkies and baby monitors.
6. Any device operating on the 2.4GHz frequency will cause interference. Devices such as 2.4GHz cordless phones or other wireless remotes operating on the 2.4GHz frequency can potentially drop the wireless signal. Although the phone may not be in use, the base can still transmit wireless signals. Move the phone's base station as far away as possible from your wireless devices.

If you are still experiencing low or no signal consider repositioning the wireless devices or installing additional access points. The use of higher gain antennas may also provide the necessary coverage depending on the environment.

# Déclaration de conformité



## Coordonnées du fournisseur:

Nom:

TRENDware International, Inc.

Adresse:

20675 Manhattan Place

Torrance, CA 90501

USA

## Détails du produit:

Nom du produit:

150Mbps Micro Wireless N USB Adapter

Modèle:

TEW-648UBM

Nom Commercial:

TRENDnet



## Détails standard applicable:

EN 300 328 V1.7.1: 10-2006

EN 301 489-1 V1.8.1: 04-2008

EN 301 489-17 V1.3.2: 04-2008

EN 62311 : 2008

EN 60950-1: 2006

## Déclaration:

*l' appareil est conforme aux exigences essentielles de la directive 1999/5/CE du Parlement européen et du Conseil du 9 mars 1999 concernant les équipements hertziens et les équipements terminaux de télécommunications et la reconnaissance mutuelle de leur conformité.*

Je déclare par la présente que les produits et appareils mentionnés ci-dessus sont conformes aux standards et aux dispositions des directives.

Sonny Su

Full Name

September 8, 2010

Date

Director of Technology

Position / Title

Signature

## Certifications

This equipment has been tested and found to comply with FCC and CE Rules.

Operation is subject to the following two conditions:

- (1) This device may not cause harmful interference.
- (2) This device must accept any interference received. Including interference that may cause undesired operation.



Waste electrical and electronic products must not be disposed of with household waste. Please recycle where facilities exist. Check with you Local Authority or Retailer for recycling advice.



**NOTE: THE MANUFACTURER IS NOT RESPONSIBLE FOR ANY RADIO OR TV INTERFERENCE CAUSED BY UNAUTHORIZED MODIFICATIONS TO THIS EQUIPMENT. SUCH MODIFICATIONS COULD VOID THE USER'S AUTHORITY TO OPERATE THE EQUIPMENT.**

### ADVERTENCIA

En todos nuestros equipos se mencionan claramente las características del adaptador de alimentación necesario para su funcionamiento. El uso de un adaptador distinto al mencionado puede producir daños físicos y/o daños al equipo conectado. El adaptador de alimentación debe operar con voltaje y frecuencia de la energía eléctrica domiciliar existente en el país o zona de instalación.



## Product Warranty Registration

Please take a moment to register your product online.  
Go to TRENDnet's website at <http://www.trendnet.com/register>