




Guía de instalación rápida 

TEW-623PI
3.02

Table of Contents

Español	1
1. Antes de iniciar	1
2. Cómo se instala	2
3. Cómo usar el adaptador inalámbrico	4
Troubleshooting	5



Contenidos del paquete

- TeW-623PI
- CD-ROM (Herramienta y controladores)
- Guía de instalación rápida multilingüe
- 3 antenas desmontables de 2dbi

Requisitos del sistema

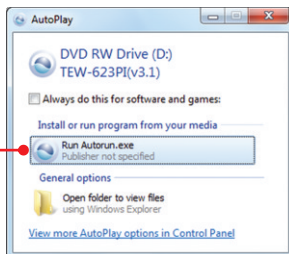
- Ranura PCI 2.2 de 32 bits
- Unidad de CD-ROM
- CPU: 1GHZ o superior (Windows 7) / 800MHz o superior (Windows Vista) / 300 MHz o superior
- Memoria: 1 GB RAM o superior (Windows 7) / 512MB RAM o superior (Windows Vista) / 256 MB o superior (Windows XP/2000)
- Windows 7(32/64-bit) / Vista (32/64-bit) / XP (32/64-bit) / 2000

2. Cómo se instala

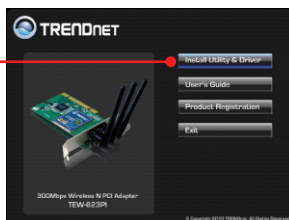
¡Importante! NO instale el TEW-623PI hasta que no se le indique.

1. Introduzca el CD-ROM del controlador y de la herramienta en la unidad de CD-ROM de su PC.

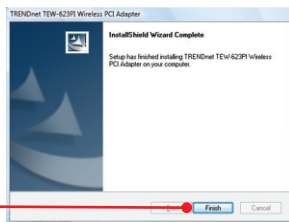
2. Haga clic en **Run autorun.exe** (sólo para Windows Vista).



3. Haga clic en **Install Utility** (Instalar herramienta).



4. Siga las instrucciones del **InstallShield Wizard** (asistente de Install Shield) y luego haga clic en **Finish** (Finalizar).



5. Retire de la unidad de CD-ROM de su PC el disco que contiene el controlador y el software.

6. Apague su PC.

7. Abra la caja de su PC.



Nota: Consulte, por favor, el manual de usuario de su ordenador con respecto a la instalación del hardware.

ENGLISH

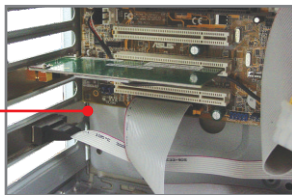
FRANÇAIS

DEUTSCH

ESPAÑOL

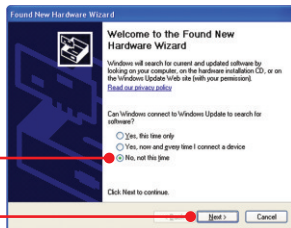
РУССКИЙ

8. Introduzca la tarjeta PCI de manera firme en la ranura para tarjeta PCI disponible de su PC desktop, después ENCIENDA el PC y espere hasta que aparezca el escritorio de Windows.

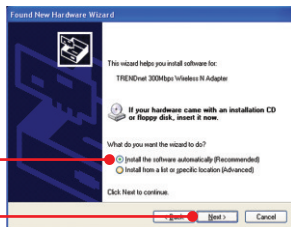


Nota: Para Windows 7/Vista/2000, los controladores se instalarán de manera automática. Vaya a la Sección 3 Uso del adaptador inalámbrico. Para Windows XP, vaya al paso 9

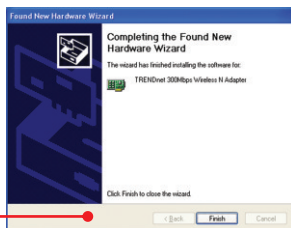
9. Le aparecerá la ventana **Found New Hardware** (Nuevo hardware encontrado). Seleccione **No** y haga clic en **Next** (Siguiente).



10. Seleccione **Install the software automatically** (Instalar el software automáticamente) (Recommended) y luego pulse **Next** (Siguiente).



11. Haga clic en **Finish** (Finalizar).



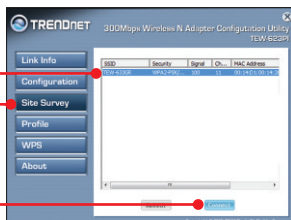
La instalación ha sido completada

3. Cómo usar el adaptador inalámbrico

1. Haga doble clic en el icono de utilidad de configuración del adaptador inalámbrico N en su bandeja del sistema.



2. Haga clic en **Site Survey** (Inspección del sitio). Seleccione el **SSID** que corresponda con su punto de acceso inalámbrico, luego pulse **Connect (Conectar)**.



La configuración inalámbrica ha finalizado

Para obtener información más detallada sobre la configuración y las opciones de configuración avanzadas de la **TEW-623PI**, por favor consulte la sección de resolución de problemas en el CD-ROM de la Guía del Usuario, o el sitio Web de TRENDnet en <http://www.trendnet.com>.

Registre su producto

Para asegurar los más altos niveles de servicio y apoyo al cliente, registre su producto en línea en: www.trendnet.com/register Gracias por elegir TRENDnet.

ENGLISH

FRANÇAIS

DEUTSCH

ESPAÑOL

РУССКИЙ

1. I inserted the Utility & Driver CD-ROM into my computer's CD-ROM Drive and the installation menu does not appear automatically. What should I do?

1. For Windows 7, if the installation menu does not appear automatically, click on the Windows Icon on the bottom left hand corner of the screen., click the "Search programs and files" box, and type D:\autorun.exe, where "D" in "D:\autorun.exe" is the letter assigned to your CD-ROM Drive, and then press the ENTER key on your keyboard
2. For Windows Vista, if the installation menu does not appear automatically, click **Start**, click the **Start Search** box, and type D:\autorun.exe where "D" in "D:\autorun.exe" is the letter assigned to your CD-ROM Drive, and then press the ENTER key on your keyboard.
3. For Windows 2000/XP, if the installation menu does not appear automatically, click **Start**, click **Run**, and type D:\autorun where "D" in "D:\autorun.exe" is the letter assigned to your CD-ROM Drive, and then press the ENTER key on your keyboard.

2. I completed all the steps in the quick installation guide, but my Wireless Adapter is not connecting to my access point. What should I do?

1. Verify that the Network Name (SSID) matches your wireless router or access point's Network Name (SSID).
2. Check your TCP/IP properties to ensure that Obtain an IP address automatically is selected.
3. Open the Wireless N Adapter Configuration Utility, click Site Survey and then click refresh to check and see if there are any available wireless networks listed.
4. Your wireless network may be encrypted. Contact your network administrator to find the encryption type and encryption key. Then click on **Configuration** to enter the encryption key.

3. Windows is unable to recognize my hardware. What should I do?

1. Make sure your computer meets the minimum requirements as specified in Section 1 of this quick installation guide.
2. You must complete the installation of the wireless adapter configuration utility (as described in Section 2) before connecting the Wireless Adapter to your computer.
3. Connect the Wireless Adapter to a different PCI slot on your computer.

4. I cannot open the Wireless N Adapter Configuration Utility. What should I do?

1. Access your device manager to make sure the adapter is installed properly. If you see a networking device with a yellow question mark or exclamation point, you will need to reinstall the device and/or the drivers. To access the device manager on Windows 7, click on the Windows icon on the bottom left hand corner of the screen, right-click on Computer, click Properties and then click **Device Manager**. To access the device manager on Windows Vista, right-click on **Computer**, click **Properties** and then click **Device Manager**. To access the device manager on Windows 2000/XP, right-click **My Computer**, click **Properties**, click the **Hardware** tab, and then click **Device Manager**.
2. If you are running Windows XP, you need to disable wireless zero configuration. Go to **Control Panel -> Network Connections**. Right click on the **Wireless Network Connection** icon and select **Properties**. Click on the **Wireless Networks** tab and uncheck **Use windows to configure my wireless settings**. Then click **OK**.

If you still encounter problems or have any questions regarding the **TEW-623PI**, please refer to the User's Guide included on the Utility & Driver CD-ROM or contact TRENDnet's Technical Support Department.



017898431240118

0236-10-2375

Este equipamento opera em caráter secundário, isto é, não tem direito a proteção contra interferência prejudicial, mesmo de estações do mesmo tipo, e não pode causar interferência a sistemas operando em caráter primário

Certifications

This equipment has been tested and found to comply with FCC and CE Rules.

Operation is subject to the following two conditions:

- (1) This device may not cause harmful interference.
- (2) This device must accept any interference received. Including interference that may cause undesired operation.



Waste electrical and electronic products must not be disposed of with household waste. Please recycle where facilities exist. Check with you Local Authority or Retailer for recycling advice.



NOTE: THE MANUFACTURER IS NOT RESPONSIBLE FOR ANY RADIO OR TV INTERFERENCE CAUSED BY UNAUTHORIZED MODIFICATIONS TO THIS EQUIPMENT. SUCH MODIFICATIONS COULD VOID THE USER'S AUTHORITY TO OPERATE THE EQUIPMENT.

ADVERTENCIA

En todos nuestros equipos se mencionan claramente las características del adaptador de alimentación necesario para su funcionamiento. El uso de un adaptador distinto al mencionado puede producir daños físicos y/o daños al equipo conectado. El adaptador de alimentación debe operar con voltaje y frecuencia de la energía eléctrica domiciliar existente en el país o zona de instalación.



Product Warranty Registration

Please take a moment to register your product online.
Go to TRENDnet's website at <http://www.trendnet.com/register>