

Guia de Instalação Rápida

TEW-623PI
H/W: V3.0R

Português	1
1. Antes de Iniciar	1
2. Como Instalar	2
3. Usando o Adaptador Wireless	7
Troubleshooting	8

1. Antes de Iniciar



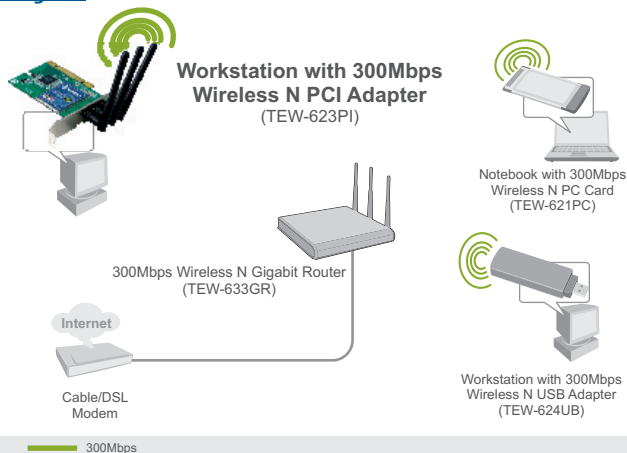
Conteúdo da Embalagem

- TEW-623PI
- CD-ROM de Utilitários e Driver
- Guia de Instalação Rápida
- 3 Antenas 2 dbi

Requisitos de Sistema

- Slot PCI 2.2 32-bit
- Drive de CD-ROM
- CPU: 300Mhz ou superior/ 800 MHz ou superior (Windows Vista)
- Memória: 256MB RAM ou superior / 512 MB RAM ou superior (Windows Vista)
- Windows 2000/XP/Vista

Aplicação



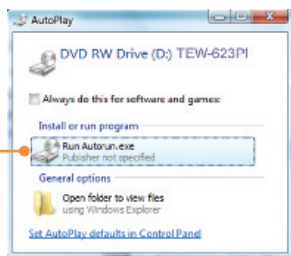
2. Como Instalar

Importante! NÃO instale o adaptador PCI em seu computador até instruído a fazê-lo.

For Windows Users

1. Insira o **CD-ROM de Utilitário & Driver** no Drive de CD-ROM de seu computador.

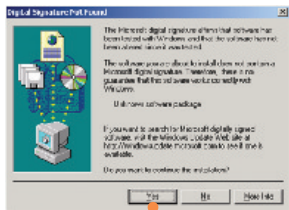
2. Clique **Run Autrun.exe** (Windows Vista apenas).



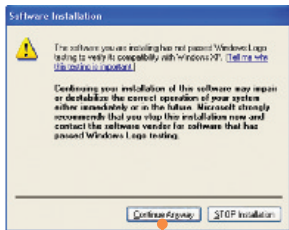
3. Clique **Install Utility & Driver**. (Instalar Utilitário e Driver).



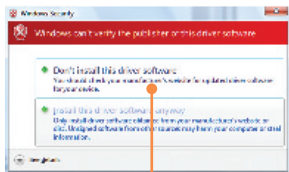
4. Siga as instruções do Assistente de Instalação (**InstallShield Wizard**).



5. Clique **Yes (Sim)**
(Windows 2000).

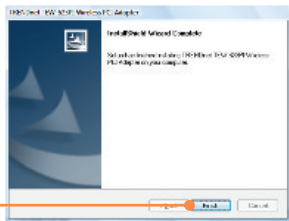


5. Click **Continue Anyway** (Continue Mesmo Assim)
(Windows XP).



5. Clique **Install this driver anyway** (Instalar o driver mesmo assim)
(Windows Vista).

6. Clique **Finish** (Finalizar).



7. Retire o CD-ROM de Utilitário e Driver de seu computador.

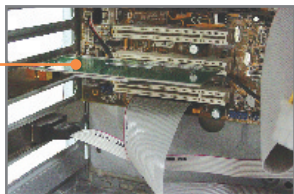
Nota: Favor recorrer ao manual do usuário de seu computador a respeito de instalação de hardware.

8. Desligue seu computador.

9. Abra o gabinete de seu computador.

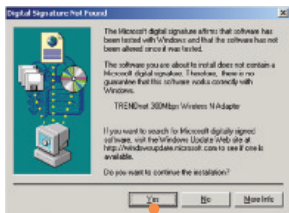


10. Insira firmemente sua placa PCI num slot PCI livre de seu PC desktop, atarraxe as antenas fornecidas e então **Ligue** o computador e aguarde até a área de trabalho do Windows aparecer.



Nota: Em Windows Vista, os drivers instalarão automaticamente. Prossiga na Seção 3 Usando o Adaptador Wireless. Em Windows 2000 e XP, continue no passo 11.

Windows 2000



11. Clique **Yes** (Sim).

Windows XP

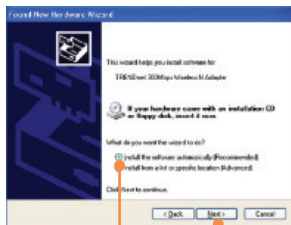


11. Selecione **No, not this time** (Não, não desta vez) e então clique **Next** (Próximo).

Windows 2000

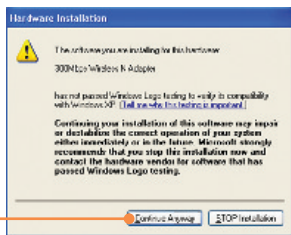
12. A instalação está completa. prossiga na Seção 3 Usando o Adaptador Wireless.

Windows XP



12. Selecione **Install the software automatically (Recommended)** (Instalar o software automaticamente) (Recomendado) e então clique **Next** (Próximo).

13. Clique **Continue Anyway** (Continue mesmo assim).



14. Clique **Finish** (Finalizar).



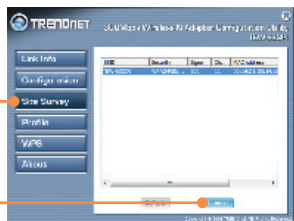
Sua instalação agora está completa.

3. Usando o Adaptador Wireless

1. Faça duplo clique no ícone do utilitário de configuração wireless em sua barra de tarefas.



2. Clique **Site Survey**.
Clique no **SSID** que esteja coerente com o SSID do seu ponto de acesso e então clique **Connect** (Conectar).



A configuração Wireless agora está completa.

Para informações detalhadas sobre esta e outras configurações avançadas do TEW-623P favor recorrer ao Guia do Usuário incluído no CD-ROM de Utilitários e Driver ou ao website da TRENDnet em www.trendnet.com.

Registre Seu Produto

Para garantir o alto nível do service e suporte ao consumidor, por favor tire um minuto para registra seu produto Online em: www.TRENDnet.com/register
Agradecemos por ter escolhido TRENDnet

P1: I inserted the Utility & Driver CD-ROM into my computer's CD-ROM Drive and the installation menu does not appear automatically. What should I do?

R1: For Windows 2000/XP, if the window does not appear automatically, click **Start**, click **Run**, and type **D:\autorun.exe** where "D" in "D:\autorun.exe" is the letter assigned to your CD-ROM Drive, and then press the ENTER key on your keyboard. For Windows Vista, if the installation menu does not appear automatically, click **Start**, click the **Start Search** box, and type **D:\autorun** where "D" in "D:\autorun.exe" is the letter assigned to your CD-ROM Drive, and then press the ENTER key on your keyboard.

P2: I completed all the steps in the quick installation guide, but my Wireless PCI Adapter is not connecting to my access point. What should I do?

R2: First, verify that the Network Name (SSID) matches your wireless router or access point's Network Name (SSID). Second, please check with your network administrator for security key in order to access a secured wireless access point or router. Please refer to the User's Guide for more information regarding wireless network security. Third, check your TCP/IP properties to ensure that Obtain an IP address automatically is selected. Fourth, double-click the Wireless Configuration Utility icon, click Site Survey and then click Refresh to check and see if there are any available wireless networks listed.

P3: Windows is unable to recognize my hardware. What should I do?

R3: Make sure your computer meets the minimum requirements as specified in Section 1 of this quick installation guide. Also, you must complete the installation of the wireless configuration utility (as described in Section 2) before installing the Wireless PCI Adapter to your computer. Lastly, move the Wireless PCI Adapter to a different PCI port of your computer.

P4: I cannot open the wireless configuration utility. What should I do?

R4: Access your device manager to make sure the adapter is installed properly. If you see a networking device with a yellow question mark or exclamation point, you will need to reinstall the device and/or the drivers. To access the device manager on Windows 2000/XP, right-click **My Computer**, click **Properties**, click the **Hardware** tab, and then click **Device Manager**. To access the device manager on Windows Vista, right-click **Computer**, click **Properties** and then click **Device Manager**.

Se você ainda encontrar problemas ou tiver alguma pergunta referente ao TEW-623PI, favor recorrer ao Guia do Usuário incluído no CD-ROM de Utilitários e Driver CD-ROM ou entrar em contato com o Departamento de Suporte Técnico da Trendnet.

Certifications

This equipment has been tested and found to comply with FCC and CE Rules.

Operation is subject to the following two conditions:

- (1) This device may not cause harmful interference.
- (2) This device must accept any interference received. Including interference that may cause undesired operation.



Waste electrical and electronic products must not be disposed of with household waste. Please recycle where facilities exist. Check with you Local Authority or Retailer for recycling advice.



NOTE: THE MANUFACTURER IS NOT RESPONSIBLE FOR ANY RADIO OR TV INTERFERENCE CAUSED BY UNAUTHORIZED MODIFICATIONS TO THIS EQUIPMENT. SUCH MODIFICATIONS COULD VOID THE USER'S AUTHORITY TO OPERATE THE EQUIPMENT.

ADVERTÊNCIA

Em todos os nossos equipamentos menciona-se claramente as características do adaptador de tensão necessário para seu funcionamento. O uso de um adaptador diferente do mencionado pode produzir danos físicos e/ou danos ao equipamento conectado. O adaptador de tensão deve operar com voltagem e frequência da energia elétrica domiciliar existente no país ou zona de instalação.



Product Warranty Registration

Please take a moment to register your product online.
Go to TRENDnet's website at <http://www.trendnet.com/register>

TRENDnet[®]
20675 Manhattan Place
Torrance, CA 90501
USA