

## Quick Installation Guide



**TEW-623PI**  
H/W: V3.0R

# Table of Contents

English .....	1
1. Before You Start .....	1
2. How to Install .....	2
3. Using the Wireless Adapter .....	6
Troubleshooting .....	7

# 1. Before You Start



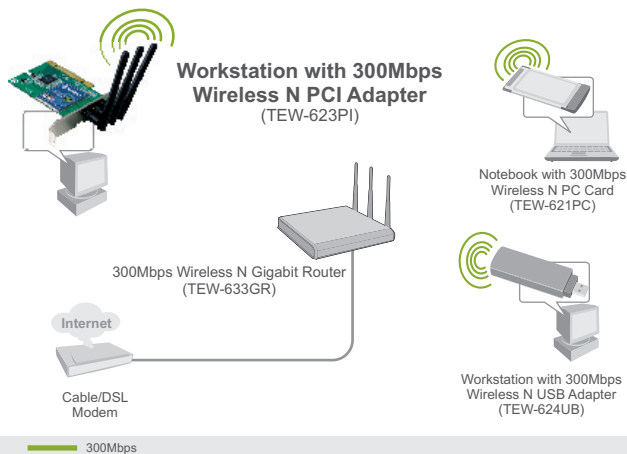
## Package Contents

- TEW-623PI
- Utility & Driver CD-ROM
- Quick Installation Guide
- 3 x 2dbi Antennas

## System Requirements

- 32-bit PCI 2.2 slot
- CD-ROM Drive
- CPU: 300Mhz or above / 800MHz or above (Windows Vista)
- Memory: 256MB RAM or above / 512MB RAM or above (Windows Vista)
- Windows 2000/XP/Vista

## Application



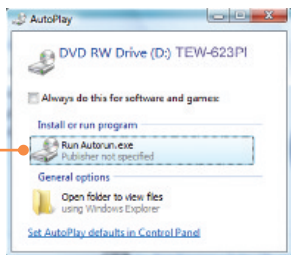
## 2. How to Install

**Important!** DO NOT install the PCI adapter in the computer until instructed to do so.

### For Windows Users

1. Insert the **Utility & Driver CD-ROM** into your computer's CD-ROM Drive.

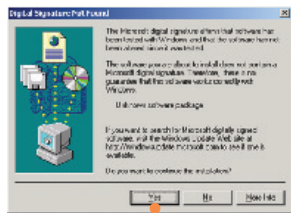
2. Click **Run Autorun.exe** (Windows Vista Only).



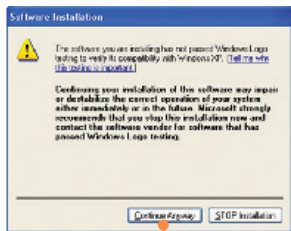
3. Click **Install Utility and Driver**.



4. Follow the **InstallShield Wizard** instructions.



5. Click **Yes**. (Windows 2000)

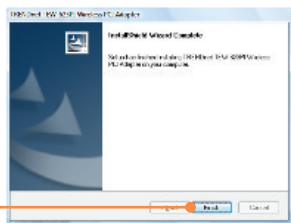


5. Click **Continue Anyway** (Windows XP).



5. Click **Install this driver software anyway** (Windows Vista).

6. Click **Finish**.



7. Remove the Utility and Driver CD-ROM from your computer.

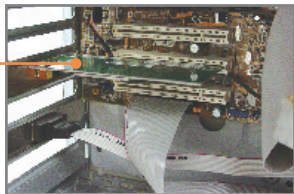
**Note:** Please refer to your computer's user manual regarding hardware installation.

8. Shutdown your computer.

9. Open your computer's case.

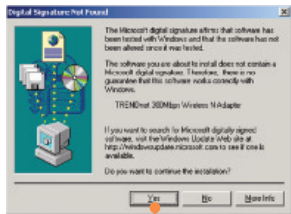


10. Insert PCI Card firmly into an available PCI Card slot on the desktop PC, attach the included antenna, and then turn **ON** the computer and wait until the Windows desktop appears.



**Note:** For Windows Vista, drivers will install automatically. Proceed to Section 3 Using the Wireless Adapter. For Windows 2000 and XP, continue on to step 11.

## Windows 2000



11. Click **Yes**.

## Windows XP

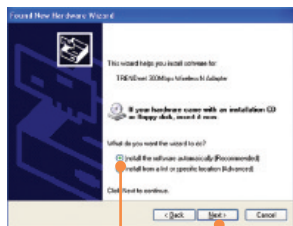


11. Select **No, not this time** and then click **Next**.

## Windows 2000

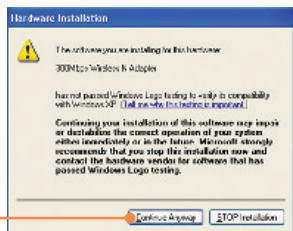
12. Installation is complete. Proceed to Section 3 Using the Wireless Adapter.

## Windows XP

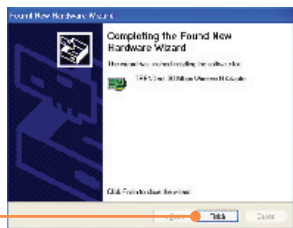


12. Select **Install this software automatically (recommended)** and then click **Next**.

13. Click **Continue Anyway**.



14. Click **Finish**.



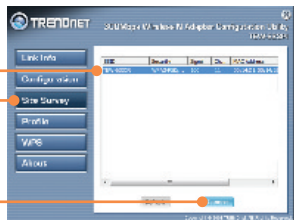
Your installation is now complete.

## 3. Using the Wireless Adapter

1. Double-click the wireless configuration utility icon in your system tray.



2. Click **Site Survey**. Click the **SSID** that matches your wireless access point and then click **Connect**.



**Your installation is now complete.**

For detailed information regarding the TEW-623PI configuration and advanced settings, please refer to the User's Guide included on the Utility & Driver CD-ROM or TRENDnet's website at [www.trendnet.com](http://www.trendnet.com)

### Register Your Product

To ensure the highest level of customer service and support, please take a moment to register your product Online at: [www.trendnet.com/register](http://www.trendnet.com/register)  
Thank you for choosing TRENDnet



**Q1: I inserted the Utility & Driver CD-ROM into my computer's CD-ROM Drive and the installation menu does not appear automatically. What should I do?**

**A1:** For Windows 2000/XP, if the window does not appear automatically, click **Start**, click **Run**, and type **D:\autorun.exe** where "D" in "D:\autorun.exe" is the letter assigned to your CD-ROM Drive, and then press the ENTER key on your keyboard. For Windows Vista, if the installation menu does not appear automatically, click **Start**, click the **Start Search** box, and type **D:\autorun** where "D" in "D:\autorun.exe" is the letter assigned to your CD-ROM Drive, and then press the ENTER key on your keyboard.

**Q2: I completed all the steps in the quick installation guide, but my Wireless PCI Adapter is not connecting to my access point. What should I do?**

**A2:** First, verify that the Network Name (SSID) matches your wireless router or access point's Network Name (SSID). Second, please check with your network administrator for security key in order to access a secured wireless access point or router. Please refer to the User's Guide for more information regarding wireless network security. Third, check your TCP/IP properties to ensure that Obtain an IP address automatically is selected. Fourth, double-click the Wireless Configuration Utility icon, click Site Survey and then click Refresh to check and see if there are any available wireless networks listed.

**Q3: Windows is unable to recognize my hardware. What should I do?**

**A3:** Make sure your computer meets the minimum requirements as specified in Section 1 of this quick installation guide. Also, you must complete the installation of the wireless configuration utility (as described in Section 2) before installing the Wireless PCI Adapter to your computer. Lastly, move the Wireless PCI Adapter to a different PCI port of your computer.

**Q4: I cannot open the wireless configuration utility. What should I do?**

**A4:** Access your device manager to make sure the adapter is installed properly. If you see a networking device with a yellow question mark or exclamation point, you will need to reinstall the device and/or the drivers. To access the device manager on Windows 2000/XP, right-click **My Computer**, click **Properties**, click the **Hardware** tab, and then click **Device Manager**. To access the device manager on Windows Vista, right-click **Computer**, click **Properties** and then click **Device Manager**.

If you still encounter problems or have any questions regarding the TEW-623PI, please refer to the User's Guide included on the Utility & Driver CD-ROM or contact TRENDnet's Technical Support Department.

## Certifications

This equipment has been tested and found to comply with FCC and CE Rules.

Operation is subject to the following two conditions:

- (1) This device may not cause harmful interference.
- (2) This device must accept any interference received. Including interference that may cause undesired operation.



Waste electrical and electronic products must not be disposed of with household waste. Please recycle where facilities exist. Check with you Local Authority or Retailer for recycling advice.



**NOTE:** THE MANUFACTURER IS NOT RESPONSIBLE FOR ANY RADIO OR TV INTERFERENCE CAUSED BY UNAUTHORIZED MODIFICATIONS TO THIS EQUIPMENT. SUCH MODIFICATIONS COULD VOID THE USER'S AUTHORITY TO OPERATE THE EQUIPMENT.

## ADVERTENCIA

En todos nuestros equipos se mencionan claramente las características del adaptador de alimentación necesario para su funcionamiento. El uso de un adaptador distinto al mencionado puede producir daños físicos y/o daños al equipo conectado. El adaptador de alimentación debe operar con voltaje y frecuencia de la energía eléctrica domiciliar existente en el país o zona de instalación.



## Product Warranty Registration

Please take a moment to register your product online.  
Go to TRENDnet's website at <http://www.trendnet.com/register>

**TRENDnet**<sup>®</sup>  
20675 Manhattan Place  
Torrance, CA 90501  
USA