

TEW-610APB

Quick Installation Guide

Version 8.19.2005



TRENDnet

Table of Contents

| | |
|--|----|
| English | 1 |
| 1. Prepare for Installation | 1 |
| 2. Install Hardware | 2 |
| 3. Configure TCP/IP Settings | 3 |
| 4. Configure the Access Point | 5 |
| 5. Configure your Wireless Network Adapter | 6 |
| Română | 7 |
| 1. Pregatiti-va de instalare | 7 |
| 2. Instalare fizica | 8 |
| 3. Configurare setari TCP/IP | 9 |
| 4. Configurarea Access Point-ului | 11 |
| 5. Configurati adaptorul de retea Wireless | 12 |
| Troubleshooting..... | 13 |

English

1. Prepare for Installation

Thank you for purchasing TRENDnet's TEW-610APB 108Mbps 802.11g MIMO Wireless Access Point.

This guide will help you set-up your Access Point quickly and easily. Just follow the step-by-step instructions below, and enjoy the benefits of accessing the Internet/network without ever being tied down to wires! If you run into problems, please refer to the Troubleshooting section. If you need further technical support, please visit www.TRENDNET.com or call technical support by phone.

Verify Package Contents

Please make sure you have everything in the box:



Verify Equipment

Before setting up the Access Point, you should have:

1. A Computer with a Wired (RJ45) or Wireless network card.
2. TCP/IP protocol installed on the Computer.
3. A Web Browser such as Internet Explorer (5.0 or higher) or Netscape Navigator (4.7 or higher).
4. A Hub or Switch connecting your existing wired network.
5. An RJ-45 Network Cable for connecting the Access Point to your network Switch.

2. Install Hardware

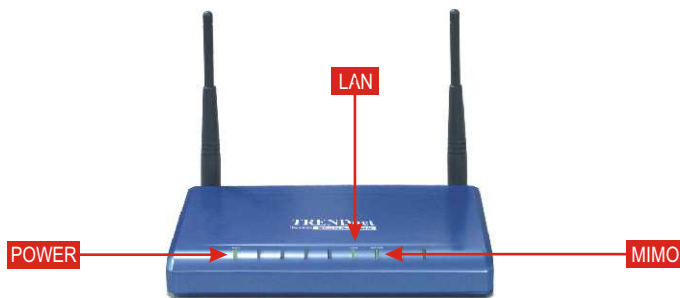
1. Locate an optimum location for the Access Point. The best place for the Access Point is usually at the center of your wireless network.
2. Connect the RJ-45 network cable to the Access Point, then connect the other end of the network cable to a Switch or Hub. The Access Point is now connected to your 10/100Mbps network.
3. Connect the power adapter to the Access Point. Make sure you use the power adapter supplied with the Access Point; using a different power adapter may damage the unit.



NOTE: If you are using a wired computer to configure the Access Point, please connect this computer to the same Switch or Hub the TEW-610APB is connected to.

Verify Hardware Installation

Make sure the front panel lights are on: Power, LAN, MIMO.

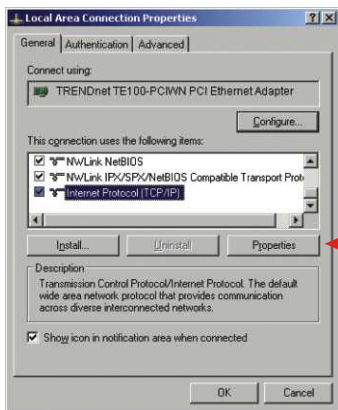


3. Configure TCP/IP Settings

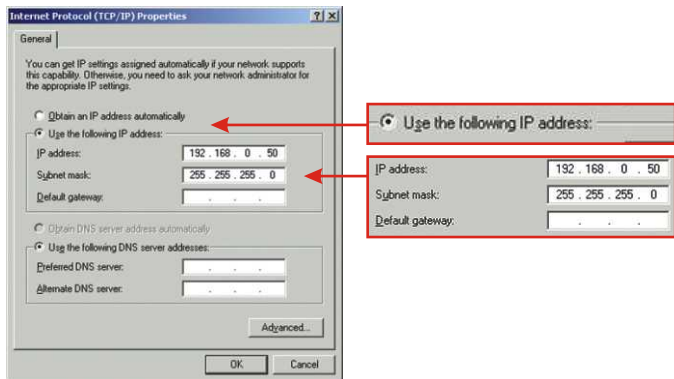
Before the Access Point can be accessed and configured, the computer's TCP/IP settings need to be changed. (That includes your wireless card's IP address, too.)

Windows 2000/XP

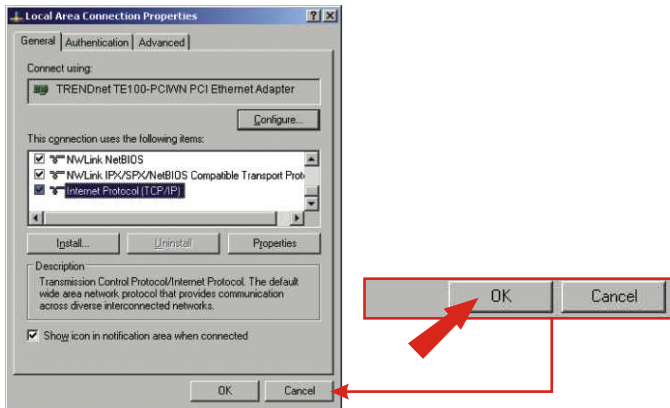
1. Find the **Start** button located on the Desktop.
2. Click **Start**, and click on **Control Panel**. For Windows 2000, click Start, highlight Settings, and click **Control Panel**.
3. Double-Click the **Network Connection** icon.
4. Right-Click on the **Local Area Connection** icon, then click on **Properties**. The Local Area Connection Properties box will appear.
5. Under the **General** tab, locate and select **Internet Protocol TCP/IP** and then click **Properties**. The Internet Protocol (TCP/IP) Properties box will appear.



6. Click on **Use the following IP address**. Enter **192.168.0.50** for IP address and **255.255.255.0** for Subnet, and click **OK**.



7. Click **OK**.



8. Your computer is now ready to access and configure the Access Point.

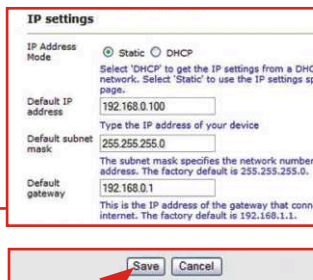
4. Configure the Access Point

From a Wired Computer

1. Open a web browser (Internet Explorer or Netscape) and enter `http://192.168.0.100` at the address bar, then press the **Enter** key. Type **admin** for **username**, and type **admin** for your **password**. Click **OK**.



2. Click **admin** and scroll down to the **IP Settings** section. Change the default IP address, subnet mask, and default gateway to match your current network settings. Your default gateway's IP address should be your router's IP Address. Type your router's IP address for your default gateway address. Click **Save**.



3. Click **Reboot**.

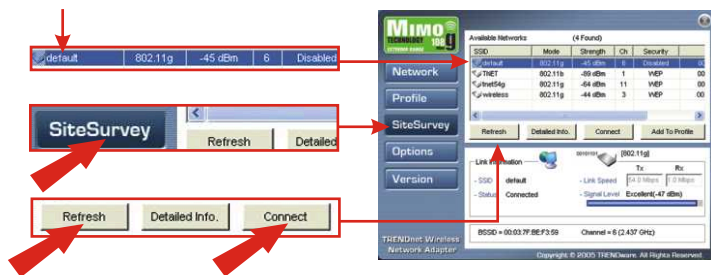
5. Configure your Wireless Network Adapter

In this example, the TEW-601PC Wireless Utility will connect to the TEW-610APB.

1. Double-click the wireless computer icon in your system tray (next to the clock in the bottom right corner of your screen).



2. Click **Site Survey**, click **Refresh**, and select the desired access point. Click **Connect**.



3. Click **OK**.
4. Please verify your connection status.



Congratulations! Installation is now complete.

1. Pregatiti-va de instalare

Va multumim pentru achizitionarea Access Point-ului Wireless TEW-610APB 108Mbps 802.11g MIMO de la TRENDnet.

Acest ghid va va ajuta sa instalati Access Point-ul repede si usor. Doar urmariti instructiunile pas-cu-pas de mai jos si va veti bucura de beneficiile accesarii Internetului/retelei fara a mai fi vreodata legat la cabluri! Daca intalniti probleme, va rugam sa cititi sectiunea Rezolvare Probleme. Daca necesitati mai mult suport tehnic, va rugam sa vizitati www.TRENDNET.com sau sa ne apelati telefonic.

Continutul pachetului

Va rugam sa va asigurati ca aveti totul in cutie:



Verificati echipamentul

Inaintea de a instala Access Point-ul, ar trebui sa aveti urmatoarele:

1. Un computer cu placa de retea prin cablu (RJ45) sau Wireless.
2. Protocolul TCP/IP instalat in computer.
3. Un web browser cum ar fi Internet Explorer (5.0 sau mai nou) sau Netscape Navigator (4.7 sau mai nou).
4. Un Hub sau Switch care sa conecteze reseaua dumneavoastra prin cablu existenta.
5. Un cablu de retea RJ-45 pentru conectarea Access Point-ului la switch-ul retelei.

2. Instalare fizica

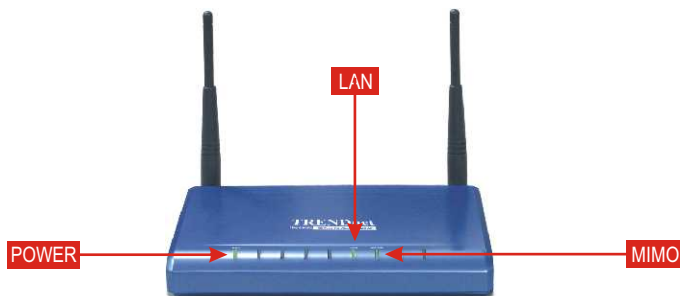
1. Localizati o locatie optima pentru Access Point. Cel mai bun loc pentru Access Point este de obicei in centrul retelei dumneavoastra wireless.
2. Conectati cablul de retea RJ45 la Access Point, apoi conectati celalalt capat al cablului de retea la un Switch sau Hub. Access Point-ul este acum conectat la retea. 10/100mbps.
3. Conectati adaptorul de alimentare la Access Point. Asigurati-va ca utilizati adaptorul de alimentare furnizat impreuna cu Access Point-ul; folosirea unui alt adaptor de alimentare poate defecta unitatea.



NOTA: Daca folositi un computer conectat la retea prin cablu pentru a configura Access Point-ul, va rugam sa conectati acest computer la acelasi Switch sau Hub la care este conectat si TEW-610APB.

Verificati instalarea fizica

Asigurati-va ca luminile de pe panoul frontal sunt aprinse: Power, LAN, MIMO.

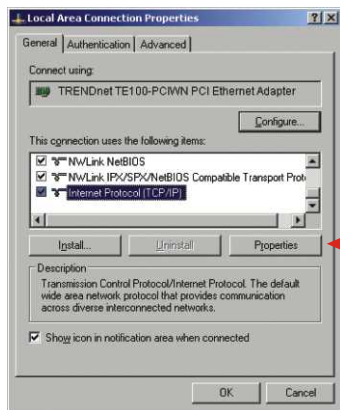


3. Configurare setari TCP/IP

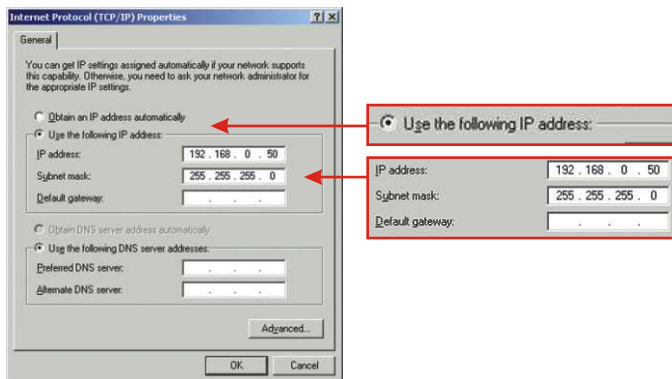
Inainte ca Access Point-ul sa poata fi accesat si configurat, setarile TCP/IP ale computerului trebuiesc schimbate. (Aceasta include adresa IP a placii dumneavoastra wireless, de asemenea.)

Windows 2000/XP

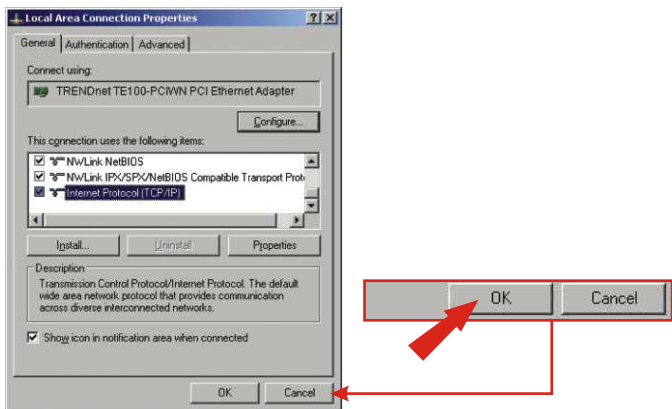
1. Gasiti butonul **Start** localizat pe Desktop.
2. Click pe **Start** si click pe **Control Panel**. Pentru Windows 2000, click pe **Start**, intrati in **Settings** si click pe **Control Panel**.
3. Dublu-Click pe iconita **Network Connection**.
4. Click-dreapta pe iconita **Local Area Connection** si apoi click pe **Properties**. Fereastra Local Area Connection Properties va apare.
5. Sub tab-ul **General**, localizati si dati click pe **Internet Protocol TCP/IP** si apoi click pe **Properties**. Fereastra Internet Protocol (TCP/IP) Properties va apare.



6. Click pe **Use the following IP address**. Scrieti **192.168.0.50** la IP address si **255.255.255.0** la Subnet si click pe **OK**.



7. Click pe **OK**.



8. Computerul dumneavoastra este pregatit sa acceseze si sa configureze Access Point-ul.

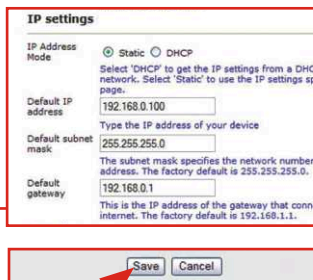
4. Configurarea Access Point-ului

De la un computer conectat la retea prin cablu

1. Deschideti un web browser (Internet Explorer sau Netscape) si scrieti `http://192.168.0.100` in bara de adrese, apoi apasati tasta **Enter**. Scrieti **admin** la **username** si scrieti **admin** la **password**. Click pe **OK**.



2. Click pe **admin** si derulati in jos la sectiunea **IP Settings**. Modificati adresa IP initiala, subnet mask si default gateway pentru a se potrivi cu setarile curente ale retelei dumneavoastra. Adresa IP a default gateway ar trebui sa fie adresa IP a router-ului dumneavoastra. Scrieti adresa IP a router-ului dumneavoastra ca adresa default gateway. Click pe **Save**.



3. Click pe **Reboot**.

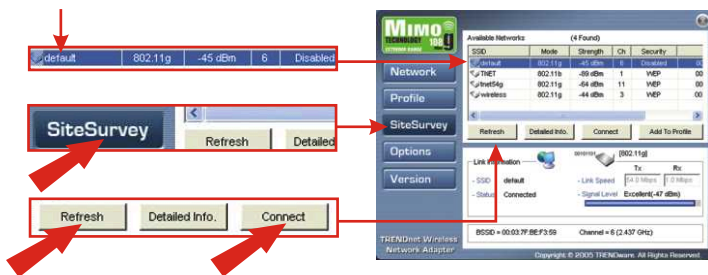
5. Configurati adaptorul de retea Wireless

In acest exemplu, programul utilitar Wireless al TEW-601PC se va conecta la TEW-610APB.

1. Dublu-click pe iconita wireless din system tray (langa ceas in coltul dreapta jos al ecranului).



2. Click pe **Site Survey**, click pe **Refresh** si selectati access point-ul dorit. Click pe **Connect**.



3. Click pe **OK**.
4. Va rugam sa verificati starea conexiunii.



Felicitari! Instalarea este acum completa.

Troubleshooting

Q1: I specified the IP address `http://192.168.0.100` in my Internet browser's address bar, but error message says "The page cannot be displayed". How can I get into the TEW-610APB's web configuration page?

A1: Please check your hardware and TCP/IP settings again by following the instructions sections 1~3, make sure the Power, LAN, MIMO on the Access Point's front panel are on and the TCP/IP configurations are correct. then try accessing `http://192.168.0.100` again.

Q2: If my network's IP is different than the Access Point's range, what should I do?

A2: You should still configure the access point first. After all the settings are applied, go to the Access Point's configuration page, click on TCP/IP settings and change an IP address for the Access Point to match your network's IP.

Q3. After I successfully configured the Access Point to meet my network settings, I cannot connecting to my network using wireless computers.

A3: If you have a DHCP server in your network, you need to go into TCP/IP settings again and re-select "Obtain an IP automatically" for Windows 98/ME and "Obtain an IP Address automatically" for Windows 2000/XP to allow the PC to regain an IP address from your DHCP server.

Q4. All the settings are set correctly, but I still can't use the Access Point, what should I do?

A4: You can find additional information in the User's Guide. If you still have Problems, contact our Technical Support by email or phone.

Certifications

This equipment has been tested and found to comply with FCC and CE Rules. Operation is subject to the following two conditions:

- (1) This device may not cause harmful interference.
- (2) This device must accept any interference received.
Including interference that may cause undesired operation.



Waste electrical and electronic products must not be disposed of with household waste. Please recycle where facilities exist. Check with you Local Authority or Retailer for recycling advice.



NOTE: THE MANUFACTURER IS NOT RESPONSIBLE FOR ANY RADIO OR TV INTERFERENCE CAUSED BY UNAUTHORIZED MODIFICATIONS TO THIS EQUIPMENT. SUCH MODIFICATIONS COULD VOID THE USER'S AUTHORITY TO OPERATE THE EQUIPMENT.



TRENDnet

Product Warranty Registration

Please take a moment to register your product online.
Go to TRENDnet's website at <http://www.TRENDNET.com>

TRENDnet Technical Support

US/Canada Support Center

Contact

Telephone: 1(888) 777-1550

Fax: 1(310) 626-6267

Email: support@trendnet.com

Tech Support Hours

7:30am - 6:00pm Pacific Standard Time

Monday - Friday

European Support Center

Contact**Telephone**

Deutsch : +49 (0) 6331 / 268-460

Français : +49 (0) 6331 / 268-461

0800-907-161 (numéro vert)

Español : +49 (0) 6331 / 268-462

English : +49 (0) 6331 / 268-463

Italiano : +49 (0) 6331 / 268-464

Dutch : +49 (0) 6331 / 268-465

Eesti : +372-6593613 (9.00AM to 5:00PM)

Fax: +49 (0) 6331 / 268-466

Tech Support Hours

8:00am - 6:00pm Middle European Time

Monday - Friday

TRENDnet

3135 Kashiwa Street. Torrance, CA 90505

<http://www.TRENDNET.com>