

TEW-610APB F.A.Q.

Q: How do I configure the Access Point through the web-based configuration?

A: Open your web browser and type the IP address of the TEW-610APB in the address bar. The default IP address is 192.168.1.100. At the login, enter your username (admin) and password (admin).

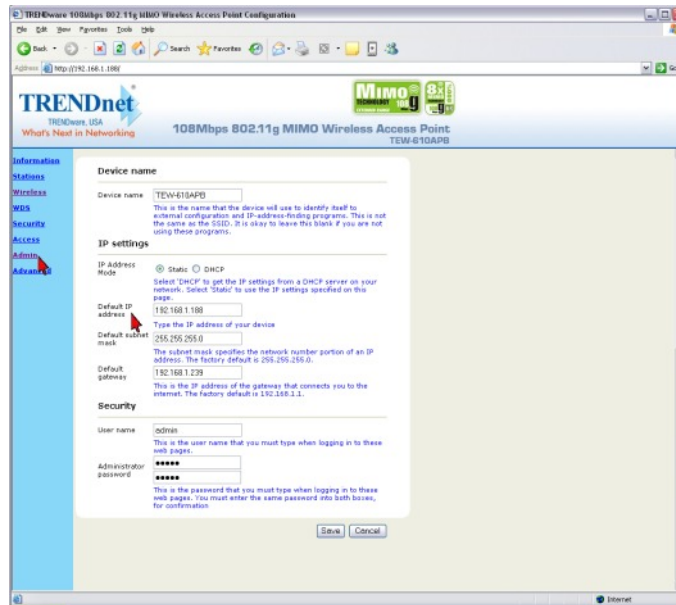
Q: What is the default IP address of my Access Point?

A: The default IP address of the TEW-610APB is 192.168.1.100.

Q: How do I change the IP address of my TEW-610APB?

A: Step 1. Open your web browser and type the IP address of the TEW-610APB in the address bar. The default IP address is 192.168.1.100. At the login, enter your username (**admin**) and password (**admin**).

Step 2. Click “Admin” on the left hand side.



Step 3. Change the IP address to the desired IP address and click “Save”.

Q: What is the default username and password for the TEW-610APB?

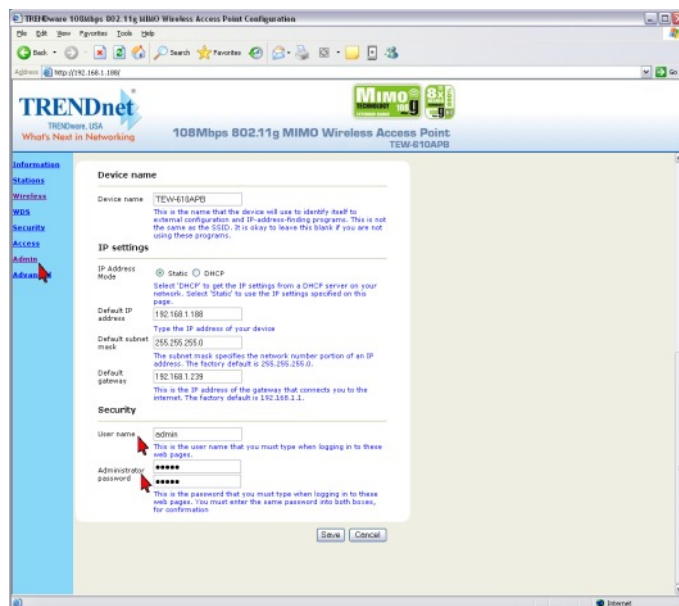
A: The default username and password are both “admin”.

TEW-610APB F.A.Q.

Q: How do I change the password and username on my TEW-610APB?

A: Step 1. Open your web browser and type the IP address of the TEW-610APB in the address bar. The default IP address is 192.168.1.100. At the login, enter your username (**admin**) and password (**admin**).

Step 2. Click on the “**Admin**” on the left hand side.



Step 3. Enter the new Username and/or Administrator Password. Click “**Save**”.

Q: What can I do if I forgot my password or want to reset back to factory defaults?

A: Locate the reset button on the back of the unit. Press and hold it in for approximately 15 seconds.

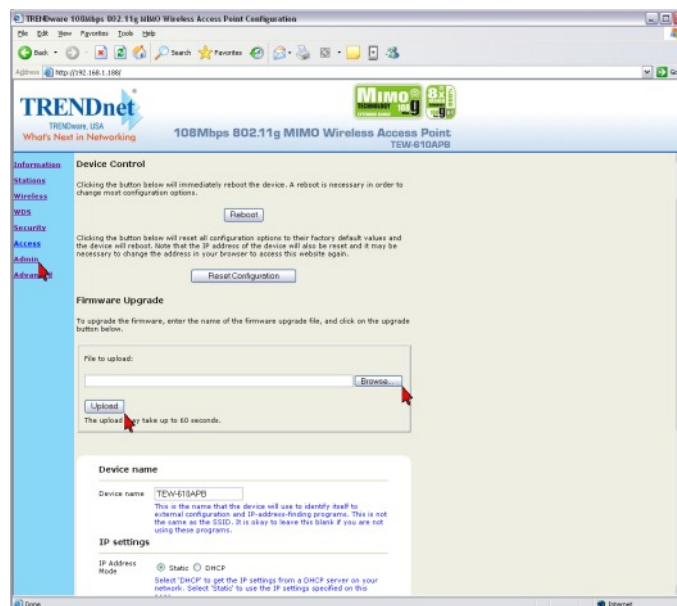
TEW-610APB F.A.Q.

Q: How do I upgrade the firmware on my Access Point?

A: DO NOT upgrade firmware on any TRENDnet product using a wireless connection. Firmware upgrades over wireless connections may damage the product. Please perform firmware upgrades with "wired" network connections only.

Step 1. Open your web browser and type the IP address of the TEW-610APB in the address bar. The default IP address is 192.168.1.100. At the login, enter your username (**admin**) and password (**admin**).

Step 2. Click on the “**Admin**” on the left hand side.



Step 3. Click on “**Browse**” next to the box under the “**Firmware Upgrade**” section. Locate and select the firmware file that you previously downloaded and extracted.

Step 4. Click on “**Upgrade**”. It will take approximately 30 seconds to upgrade the firmware and the access point to restart.

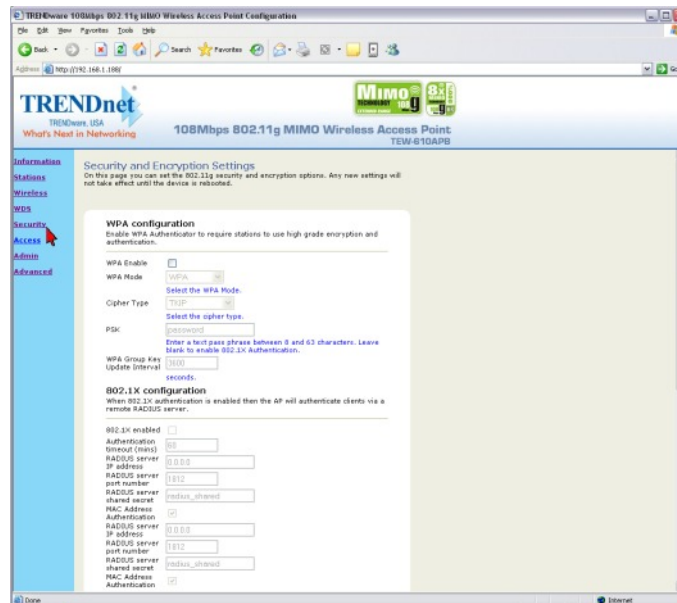
Do NOT interrupt the firmware update process. Doing so may damage the product.

TEW-610APB F.A.Q.

Q: How do I enable encryption on my Access Point?

A: Step 1. Open your web browser and type the IP address of the TEW-610APB in the address bar. The default IP address is 192.168.1.100. At the login, enter your username (**admin**) and password (**admin**).

Step 2. Click “**Security**” on the left hand side



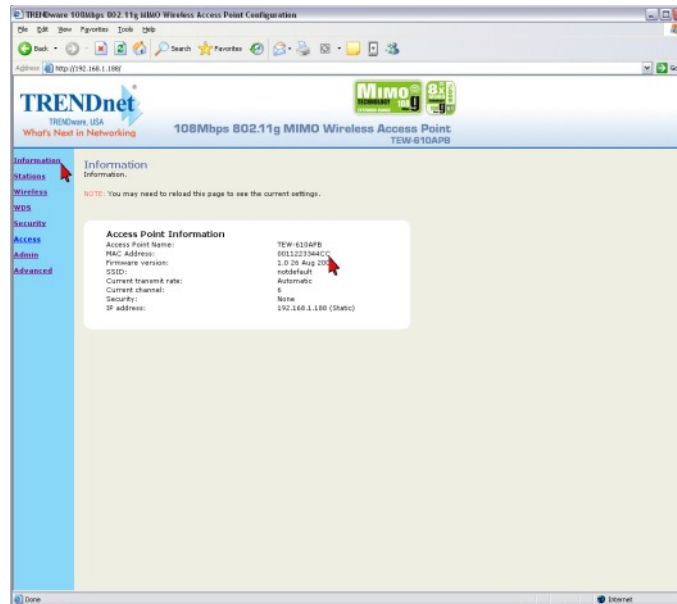
Step 3. Choose your Authentication type and enter your key settings. Click “**Save**”.

TEW-610APB F.A.Q.

Q: Where can I find the MAC address of my Access Point?

A: Step 1. Open your web browser and type the IP address of the TEW-610APB in the address bar. The default IP address is 192.168.1.100. At the login, enter your username (**admin**) and password (**admin**).

Step 2. Click on the “**Status**” tab at the top of the page. It is located directly across from **LAN MAC**:



Q: How do I configure my TEW-610APB in WDS mode?

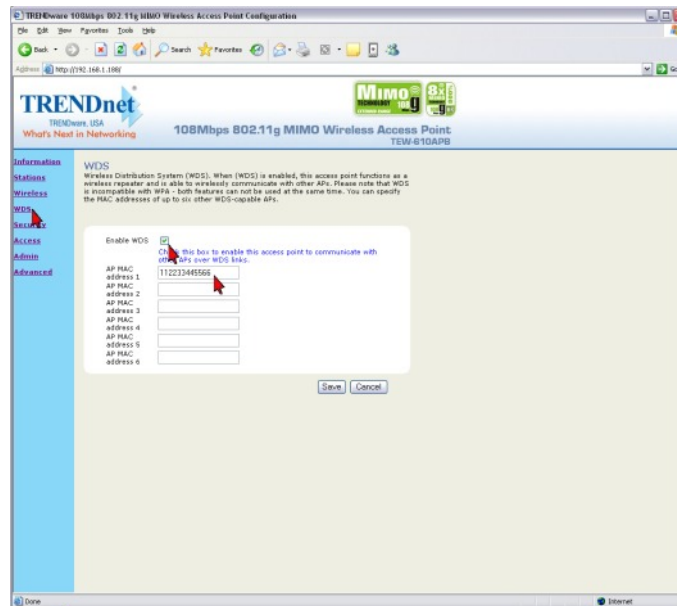
A: The TEW-610APB uses WDS (Wireless Distribution System). The channel and SSID on the remote Access Points must be the same as the TEW-610APB. The remote Access Point must also support WDS.

Note: WPA encryption is not supported on WDS links.

Step 1. Open your web browser and type the IP address of the TEW-610APB in the address bar. The default IP address is 192.168.1.100. At the login, enter your username (**admin**) and password (**admin**).

TEW-610APB F.A.Q.

Step 2. Click **“WDS”** on the left hand side.



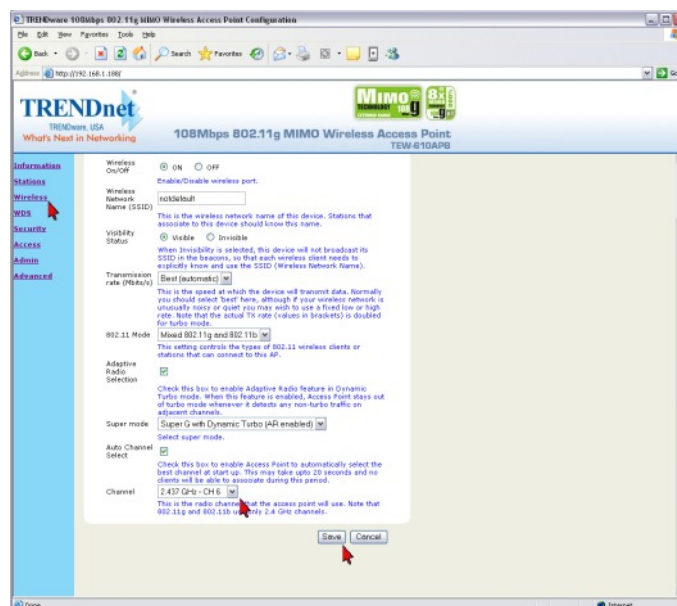
Step 3. Single click the **“Enable WDS”** check box to enable WDS.

Step 4. Enter the remote Access Point's MAC address into the **“AP MAC Address”** field and click **“Save”**.

Q: How do I change the channel of my Access Point?

A: Step 1. Open your web browser and type the IP address of the TEW-610APB in the address bar. The default IP address is 192.168.1.100. At the login, enter your username (**admin**) and password (**admin**).

Step 2. Click **“Wireless”** on the left hand side



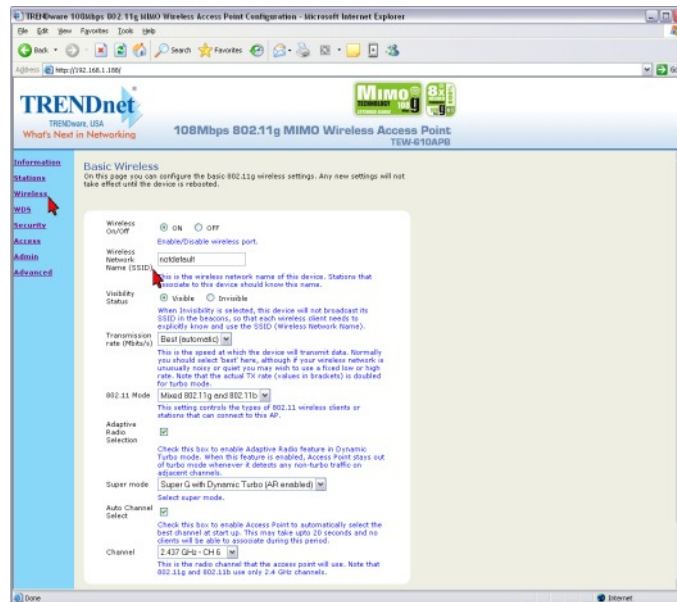
Step 3. Choose a different channel from the drop down box next to the Channel field and click **“Save”**.

TEW-610APB F.A.Q.

Q: How do I change the SSID of my Access Point?

A: Step 1. Open your web browser and type the IP address of the TEW-610APB in the address bar. The default IP address is 192.168.1.100. At the login, enter your username (**admin**) and password (**admin**).

Step 2. Click **“Wireless”** on the left hand side



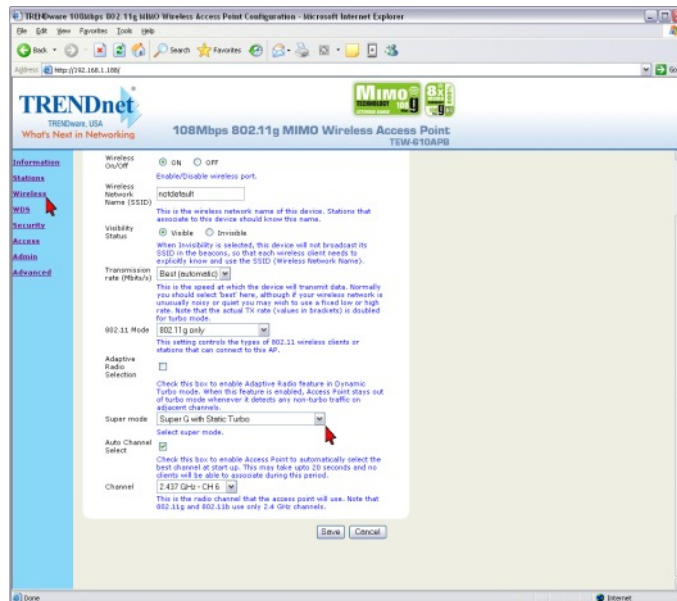
Step 3. Enter in your desired SSID in the **“Wireless Network Name” (SSID)** field. Click **“Save”**.

TEW-610APB F.A.Q.

Q: How do I enable Super G mode on my access point?

A: **Step 1.** Open your web browser and type the IP address of the TEW-610APB in the address bar. The default IP address is 192.168.1.100. At the login, enter your username (**admin**) and password (**admin**).

Step 2. Click “Wireless” on the left hand side



Step 3. Choose the “**Super G**” mode that you want to use next to the Super G field. Click “**Save**”.

Note: Super G mode requires that you use channel 6. Super G mode with Static Turbo requires that the 802.11 mode is set to 802.11g only and that Adaptive Radio Selection is disabled. The Adaptive Radio Selection is used with Super G with Dynamic Turbo (AR enabled) mode.