



Quick Installation Guide



TEW-604UB

Table of Contents

English	1
1. Before You Start	1
2. How to Install	2
3. Wireless Configuration	5
Troubleshooting	8

1. Before You Start



Package Content

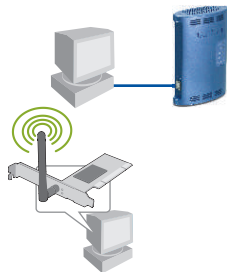
- TEW-604UB
- Utility & Driver CD-ROM
- Quick Installation Guide
- USB Cable

System Requirements

- CD-ROM Drive
- Computer with an available USB port
- Windows 98SE/ME/2000/XP

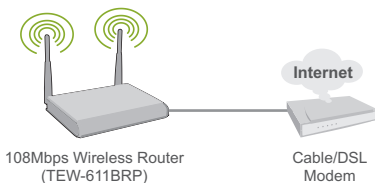
Application

Workstation with 108Mbps Smart Wireless USB 2.0 Adapter (TEW-604UB)



Workstation with 108Mbps
Wireless PCI Adapter
(TEW-603PI)

Notebook with 108Mbps Smart Wireless USB 2.0 Adapter (TEW-604UB)



108Mbps Wireless Router
(TEW-611BRP)

Cable/DSL
Modem

— USB

— 108Mbps Wireless

2. How to Install

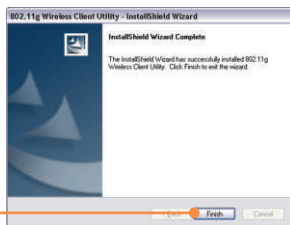
Important! DO NOT connect the Wireless USB Adapter to your computer until instructed to do so.

For Windows Users

1. Insert the **Utility & Driver CD-ROM** into your computer's CD-ROM Drive and then click **Install Utility**.

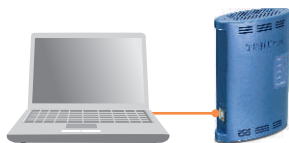


2. Follow the **InstallShield Wizard** instructions and then click **Finish**.

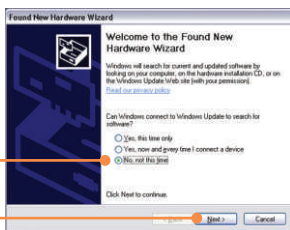


Note: The TEW-604UB is hot-pluggable, you can connect or disconnect the TEW-604UB while the computer is on. After inserting the TEW-604UB into one of your USB ports, the Found New Hardware Wizard appears.

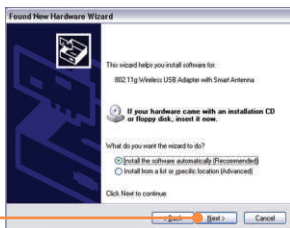
3. Connect the TEW-604UB into your computer's USB port.



4. The Found New Hardware Wizard appears, select **No**, and then click **Next**.



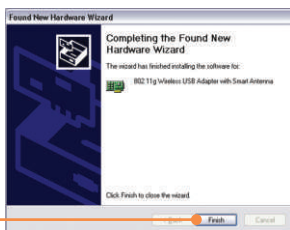
5. Click **Next**.



6. A warning message will appear.
Click **Continue Anyway**.



7. Click **Finish**.



Your installation is now complete.

Note: After installation is complete, the wireless icon will appear in your system tray (next to the clock on the bottom right corner of your screen). If it does not appear, restart your computer. **Go to Section 3 Wireless Configuration to configure the TEW-604UB.**

3. Wireless Configuration

Note: Wireless configuration requires a 802.11g or 802.11b Access Point (for Infrastructure Mode) or another 802.11g wireless adapter (for Ad-Hoc/Peer-to-Peer networking mode).

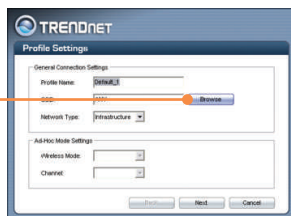
1. Double-click the **Wireless** icon in your System Tray.



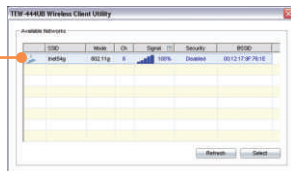
2. Click **Profile** and then click **Add**.



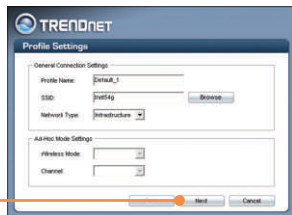
3. Click **Browse**.



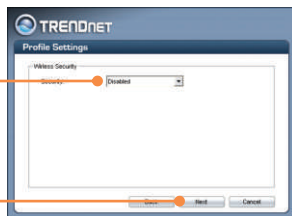
4. Double-click the **SSID** that matches your wireless access point.



5. Click **Next**.

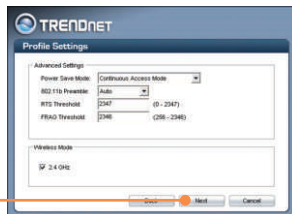


6. Select **Security** corresponding to the wireless network and then click **Next**.



Note: If your wireless network has wireless security, then the **Wireless Client Utility** will instruct you to enter wireless security settings before continuing to the steps below. Refer to the User's Guide regarding Wireless Security.

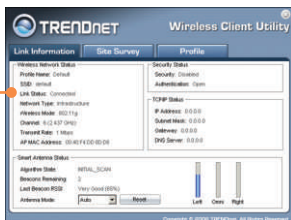
7. Verify **Advanced Settings** and **Wireless Mode** and then click **Next**.



8. Click **Activate Now**.



9. Verify that the **Link Status** is **Connected**.



Your installation is now complete.

For detailed information regarding the TEW-604UB configuration and advanced settings, please refer to the User's Guide included on the Utility & Driver CD-ROM or TRENDnet's website at www.trendnet.com

Q1: I inserted the Utility & Driver CD-ROM into my computer's CD-ROM Drive and the installation menu does not appear automatically. What should I do?

A1: If the installation menu does not appear automatically, click Start, click Run, and type D:\Autorun.exe where "D" in "D:\Autorun.exe" is the letter assigned to your computer's CD-ROM Drive. And then click OK to start the installation.

Q2: I completed all the steps in the Quick Installation Guide, but my Wireless USB Adapter isn't connecting to my access point. What should I do?

A2: First, verify that the Network Name (SSID) matches your wireless router or wireless access point's SSID. Second, you should check your TCP/IP properties to ensure that Obtain an IP address automatically is selected. Third, you can click on the Site Survey tab of the Wireless Client Utility to check and see if there are any available wireless networks listed.

Q3: Windows is unable to recognize my hardware. What should I do?

A3: Make sure your computer meets the minimum requirements as specified in Section 1 of this Quick Installation Guide. Also make sure that you install the Wireless Client Utility (as described in Section 2) before connecting the Wireless USB Adapter. If Windows is still unable to recognize your hardware, try installing the Wireless USB Adapter to a different USB port of your computer.

Q4: I cannot open the Wireless Configuration Utility. What should I do?

A4: Go to your Device Manager to make sure the adapter is installed properly. If you see a networking device with a yellow question mark or exclamation point, you will need to reinstall the device and/or the drivers. To access your Device Manager, right-click My Computer, click Properties, click the Hardware tab, and then click Device Manager.

If you still encounter problems or have any questions regarding the TEW-604UB, please refer to the User's Guide included on the Utility & Driver CD-ROM or contact Trendnet's Technical Support Department.

Certifications

This equipment has been tested and found to comply with FCC and CE Rules.

Operation is subject to the following two conditions:

- (1) This device may not cause harmful interference.
- (2) This device must accept any interference received. Including interference that may cause undesired operation.



Waste electrical and electronic products must not be disposed of with household waste. Please recycle where facilities exist. Check with you Local Authority or Retailer for recycling advice.



NOTE: THE MANUFACTURER IS NOT RESPONSIBLE FOR ANY RADIO OR TV INTERFERENCE CAUSED BY UNAUTHORIZED MODIFICATIONS TO THIS EQUIPMENT. SUCH MODIFICATIONS COULD VOID THE USER'S AUTHORITY TO OPERATE THE EQUIPMENT.



TRENDnet

TRENDnet Technical Support

US/Canada Support Center

Contact

Telephone: 1(866) 845-3673

Email: support@trendnet.com

Tech Support Hours

24/7 Toll Free Tech Support

European Support Center

Contact

Visit our website for detail contact information

[http:// www.trendnet.com/support](http://www.trendnet.com/support)



Product Warranty Registration

Please take a moment to register your product online.

Go to TRENDnet's website at <http://www.trendnet.com>

TRENDnet

3135 Kashiwa Street
Torrance, CA 90505
USA