

TEW-509UB

Quick Installation Guide

Version 09.13.2005



TRENDnet[®]
TRENDware, USA
What's Next in Networking

Table of Contents

English	1
1. Prepare for Installation	1
2. Using the Hot Spot Detector.....	2
3. Install Wireless Configuration Utility	5
4. Install Hardware	8
5. Install Drivers	9
6. Wireless Configuration	12
Troubleshooting	14

English QIG

1. Prepare for Installation

Thank you for purchasing the TEW-509UB. Your new 54Mbps 802.11a/g Wireless USB 2.0 Adapter will allow you to connect to 802.11a, 802.11g or 802.11b networks and begin wirelessly sharing the Internet, files, and other resources. You can also locate various Hot Spots by using the LCD display.

This guide will help you set up and configure your Wireless USB Adapter. Following this installation should be quick and easy. If you run into problems, please refer to the Troubleshooting section or the more detailed installation procedures on the User's Guide CD-ROM. If you need further technical support, please visit www.TRENDNET.com or call technical support by phone.

Verify Package Contents

Please make sure you have everything in the box:



Minimum Hardware Requirements

Before installing this 802.11a/g Wireless USB Adapter, you should have a:

1. USB enabled computer
2. 300 MHz processor and 128 MB of memory (Recommended)
3. A minimum of 20MB of hard disk space.
4. CD-ROM drive
5. 802.11a, 802.11g or 802.11b Access Point (for Infrastructure Mode) or another 802.11a, 802.11g wireless adapter (for Ad-Hoc/Peer-to-Peer networking mode).

2. Using the Hot Spot Detector




The following table illustrates each button's function.












Button	Functions
Power	Switch Power on/off
Seek	1. Press [Seek] to search hotspots 2. Press and hold the [Seek] button for 2 seconds to use different scanning features
Next	View the next access point

The following illustration explains the meaning for each symbol on the LCD display.



SSID	Displays the SSID of the access point. If the SSID is longer than 16 characters, it will scroll horizontally.
Channel	Displays the channel in use.
Entry	Displays the current entry. The TEW-509UB can hold a maximum of 16 entries.
Power	<p>Indicate the battery life status.</p> <ul style="list-style-type: none"> <li data-bbox="288 797 493 827"> Battery low <li data-bbox="288 863 487 892"> Battery full <li data-bbox="288 928 923 994"> At “adapter” mode, or charging the battery through USB port

<p>Scan mode</p>	<p>There are 3 scan modes (S, F and D mode). Hold the “Seek” button to toggle between scan modes. After switching to the desired scan mode, press “Seek” button again to do a site survey.</p> <p> [S] Mode: Ranks access points in the order of signal strength.</p> <p> [F] Mode: Lists all unencrypted access points (access points without security) and ranks each access point in signal strength order.</p> <p> [D] Mode: Locks onto one access point to test its signal strength at different locations.</p>
<p>Security</p>	<p>Indicates security setting of the wireless network.</p> <p> WPA security is enabled</p> <p> WEP security is enabled</p> <p> Wireless security is disabled (no security)</p>
<p>Signal</p>	<p>Indicates the signal strength and the radio band (802.11a/b/g) of wireless network. There are 5 levels of signal strength.</p> <p> 802.11a mode at 5 GHz band</p> <p> 802.11g mode at 2.4 GHz band</p> <p> 802.11b mode at 2.4 GHz band</p>

3. Install Wireless Configuration Utility

Windows 98SE/ME/2000/XP

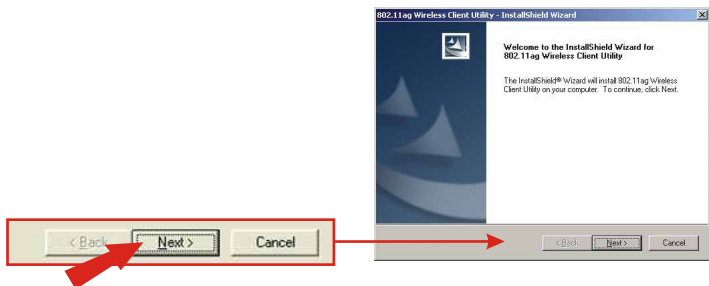
1. Insert the TEW-509UB CD-ROM into your computer's CD-ROM drive; the installation menu window will appear automatically. If the window does not appear automatically, click **Start**, click **Run**, and type **E:\Autorun.exe** in the text-field. Click **OK**.

Note: Replace "E" in "E:\Autorun.exe" with whichever letter is assigned to your CD-ROM drive.

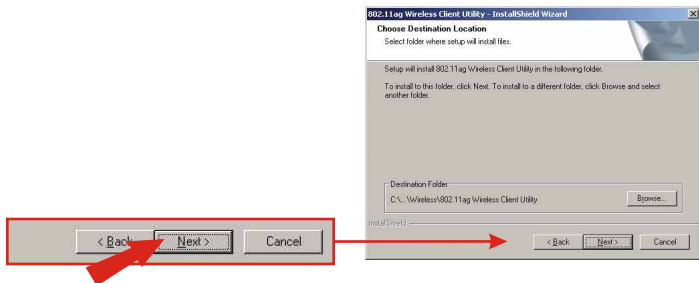
2. On the Installation Menu, click **Install Utility**.



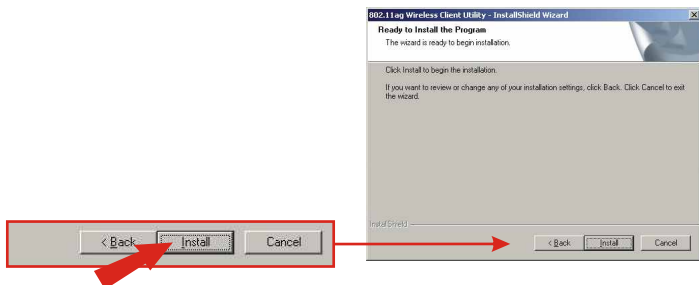
3. Follow the Install Shield Wizard's instructions to install the wireless configuration utility.
4. Click **Next**.



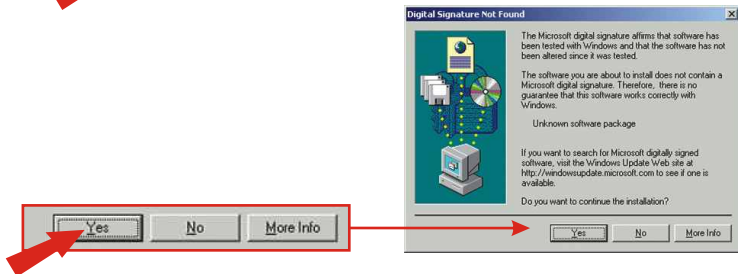
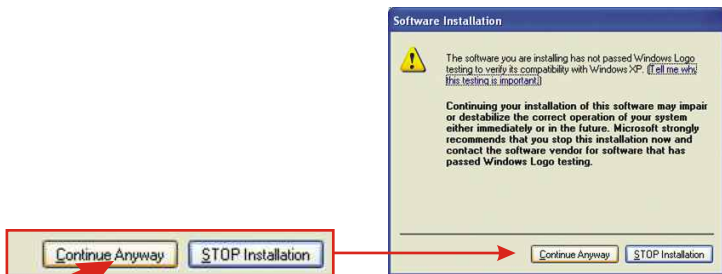
5. Click Next.



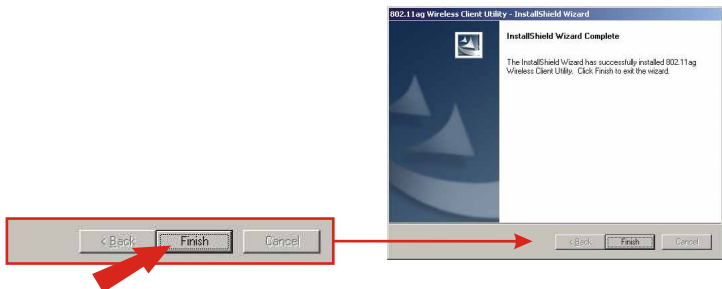
6. Click Install.



7. A warning message will tell you that the device you're installing has not yet been certified for Windows XP compatibility. Click **Continue Anyway**. For Windows 2000, click **Yes**.



8. Click **Finish**.



4. Install Hardware

The TEW-509UB is hot-pluggable. You can connect or disconnect the TEW-509UB while the computer is on.

Connect the TEW-509UB Wireless USB Adapter to your computer's USB port.



5. Install Drivers

Windows 98SE/ME

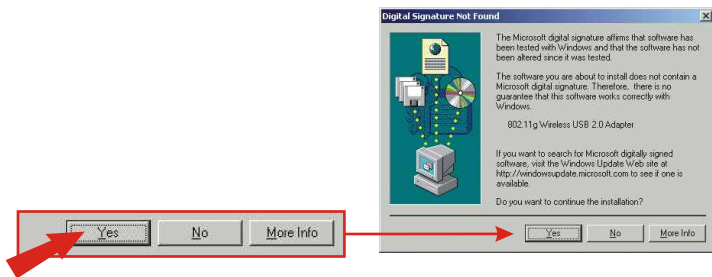
After installing the utility software, connect the Wireless USB Adapter to your computer's USB port.

1. Windows will automatically detect your new hardware and install the appropriate driver.



Windows 2000

1. After installing the utility software, connect the Wireless USB Adapter to your computer's USB port. Windows will detect new hardware and load the driver automatically.
2. When the Digital Signature Not Found Window appears, click **Yes** to continue.

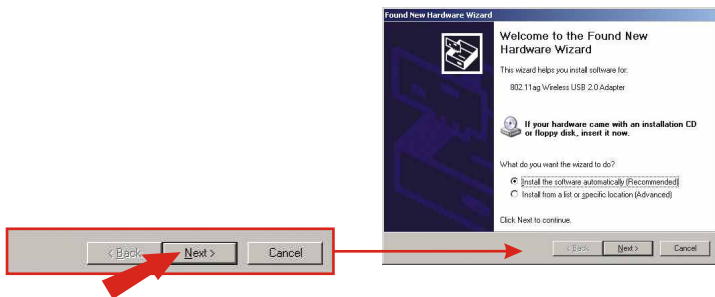


NOTE: TRENDnet's Wireless Adapters have been fully tested under all supported Windows Operating Systems and have been approved for their functionality.

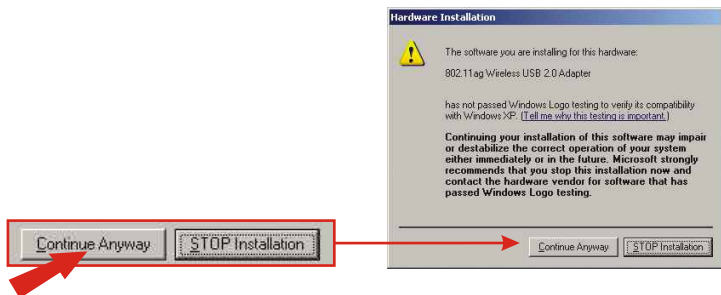
3. After clicking **Yes**, the wireless icon will appear in your system tray (next to the clock on the bottom right corner of your screen). If it does not appear, restart your computer. Go to **section 6 Wireless Configuration**.

Windows XP

1. After installing the utility software, connect the Wireless USB Adapter to your computer's USB port. The "Found New Hardware Wizard" will appear. Verify that **Install the software automatically** is selected and that the TEW-509UB CD-ROM is in your CD-ROM drive. Then click **Next**.

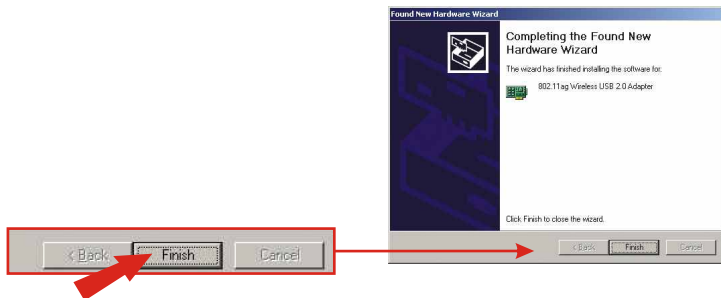


2. A warning message will tell you that the device you're installing has not yet been certified for Windows XP compatibility. Click **Continue Anyway**.



NOTE: TRENDnet's Wireless Adapters have been fully tested under all supported Windows Operating Systems and have been approved for their functionality.

3. The "Found New Hardware Wizard" will tell you that it has finished installing the software for your TEW-509UB. Click **Finish**.

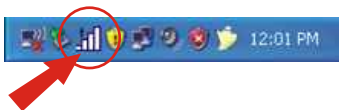


Note: After clicking **Finish**, the wireless icon will appear in your system tray (next to the clock on the bottom right corner of your screen). If it does not appear, restart your computer. **Go to section 6 Wireless Configuration.**

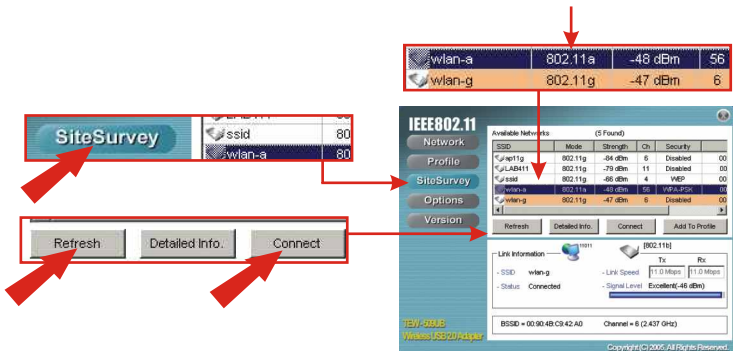
6. Wireless Configuration

Infrastructure Mode (PC-to-Access Point connection)

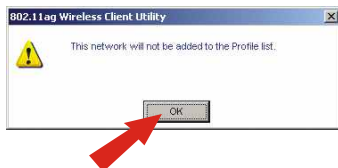
1. Double-click the wireless computer icon in your system tray (next to the clock in the bottom right corner of your screen).



2. Click **Site Survey**, click **Refresh**, and select the desired access point. Click **Connect**.



3. Click **OK**.



4. Please verify your connection status.

The screenshot shows the IEEE802.11 network interface. On the left, a box highlights the status 'Connected'. On the right, the main window shows a table of available networks and detailed information for the selected 'wlan-a' network. A second box highlights the signal level 'Excellent(-52 dBm)'.

SSID	Mode	Strength	Ch	Security
gsm_80211	802.11g	-81 dBm	11	Disabled
wlan-a	802.11a	-52 dBm	84	Disabled
wlan-g	802.11g	-55 dBm	8	Disabled
wlan-g	802.11g	-59 dBm	6	Disabled

Link Information: wlan-a
- SSID: wlan-a
- Status: Connected
- Link Speed: 54.0 Mbps
- Signal Level: Excellent(-52 dBm)
BSSID = 00:90:4B:C9:42:9F Channel = 84 (5.320 GHz)

Congratulations!
Installation is now complete.

Troubleshooting

Q1: I completed all the steps in the quick installation guide, but my wireless USB Adapter isn't connecting to my access point. What should I do?

A1: First, you should verify that the Network SSID matches your wireless router or access point's SSID. Second, you should check your TCP/IP properties to ensure that Obtain an IP address automatically is selected. Third, you can click on the Site Survey link to check and see if there are any available wireless networks listed.

Q2: Windows is unable to recognize my hardware. What should I do?

A2: Make sure your computer meets the minimum requirements as specified in Section 1 of this quick installation guide. Also, you must install the wireless configuration utility (as described in Section 3) before connecting the wireless USB Adapter.

Q3: I cannot open the wireless configuration utility. What should I do?

A3: Go to your device manager (control panel → system) to make sure the adapter is installed properly. If you see a networking device with a yellow question mark or exclamation point, you will need to reinstall the device and/or the drivers.

If you still encounter problems, please refer to the User's Guide CD-ROM or contact technical support.

Certifications

This equipment has been tested and found to comply with FCC and CE Rules. Operation is subject to the following two conditions:

- (1) This device may not cause harmful interference.
- (2) This device must accept any interference received.
Including interference that may cause undesired operation.

NOTE: THE MANUFACTURER IS NOT RESPONSIBLE FOR ANY RADIO OR TV INTERFERENCE CAUSED BY UNAUTHORIZED MODIFICATIONS TO THIS EQUIPMENT. SUCH MODIFICATIONS COULD VOID THE USER'S AUTHORITY TO OPERATE THE EQUIPMENT.





What's Next in Networking

Product Warranty Registration

Please take a moment to register your product online.
Go to TRENDware's website at <http://www.TRENDNET.com>

TRENDnet Technical Support

US/Canada Support Center

Contact

Telephone: 1(310) 626-6252

Fax: 1(310) 626-6267

Email: support@trendnet.com

Tech Support Hours

7:30am - 6:00pm Pacific Standard Time
Monday - Friday

European Support Center

Contact**Telephone**

Deutsch : +49 (0) 6331 / 268-460

Français : +49 (0) 6331 / 268-461

0800-907-161 (numéro vert)

Español : +49 (0) 6331 / 268-462

English : +49 (0) 6331 / 268-463

Italiano : +49 (0) 6331 / 268-464

Dutch : +49 (0) 6331 / 268-465

Fax: +49 (0) 6331 / 268-466

Tech Support Hours

8:00am - 6:00pm Middle European Time
Monday - Friday

TRENDware International, Inc.

3135 Kashiwa Street. Torrance, CA 90505

<http://www.TRENDNET.com>