



Quick Installation Guide



TEW-432BRP

Table of Contents

English	1
1. Before You Start	1
2. Install Router	2
3. Adding the router behind an existing 192.168.10.x network	5
Troubleshooting	6

1. Before You Start



Package Contents

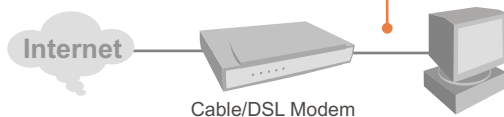
- TEW-432BRP
- Easy Go CD-ROM
- Quick Installation Guide
- RJ-45 Cable
- AC Power Adapter (7.5V, 1A)

System Requirements

- Web Browser: Internet Explorer (5.0 or above)
- Computer with Network adapter installed
- Broadband Internet
- Installed Cable or DSL modem

Important! DO NOT connect the router until instructed to do so. Follow the steps below before you insert the Easy Go CD-ROM into your computer's CD-ROM Drive.

1. Verify that you have a direct connection from your Cable or DSL modem to your computer. Also verify that you are connected to the Internet by browsing to a website, such as <http://www.trendnet.com>.



2. Install Router

1. Insert the **Easy Go CD-ROM** in your computer's CD-ROM Drive and then click **Install Router**.



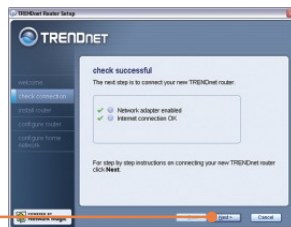
2. Click **Start Installation**.



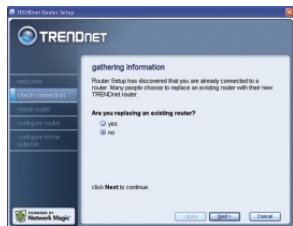
3. Choose the desired language from the dropdown list and then click **Next**.



4. Click **Next**.



5. If this screen appears, go to **Section 3**. If not, please continue to step 6.



6. Follow the Wizard instructions and continue through the remaining installation steps. Click **Next**.



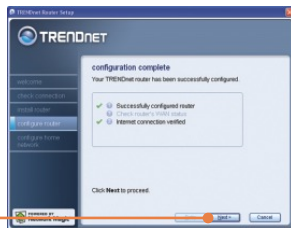
7. When the **Wireless Network** screen appears, make sure you enter a unique network name and then click **Next**.



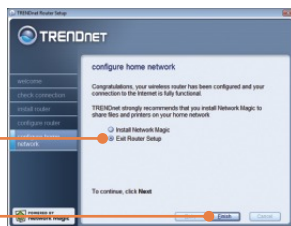
8. Click **Next**.



9. Click **Next**.



10. After the router has been configured, select **Exit Router Setup** and then click **Finish**.



Your installation is now complete.

For detailed information regarding the TEW-432BRP configuration and advanced settings, please refer to the User's Guide included on the Easy Go Installation CD-ROM or TRENDnet's website at www.trendnet.com.

Register Your Product

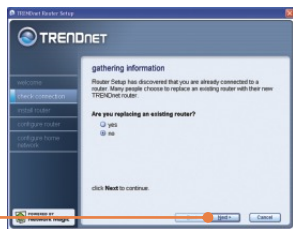
To ensure the highest level of customer service and support, please take a moment to register your product Online at: www.trendnet.com/register

Thank you for choosing TRENDnet

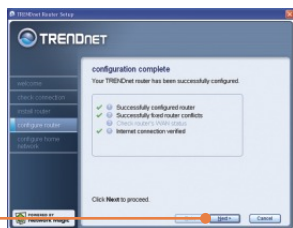
3. Adding the router behind an existing 192.168.10.x network

Note: When this window appears, it means you have a DSL/Cable modem or router that's running the 192.168.10.x network. If you are replacing your current router with the TEW-432BRP, please select yes and click Next to continue. If you are adding this router behind the DSL/Cable modem, please select no and click Next to continue.

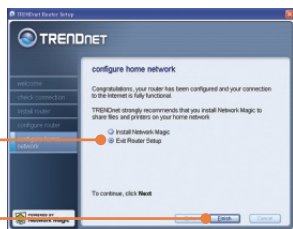
1. Select **No** and then click **Next**. Follow the Wizard instructions and continue through the remaining install steps. Click **Next**.



2. The Easy Go program will update the router to a new segment 192.168.11.x and restart your network. Your router's new IP is **192.168.11.1**. Click **Next**.



3. After the router has been configured, select **Exit Router Setup** and then click **Finish**.



Your installation is now complete.

For detailed information regarding the TEW-432BRP configuration and advanced settings, please refer to the User's Guide included on the Easy Go Installation CD-ROM or TRENDnet's website at www.trendnet.com.

Q1: I inserted the Easy Go CD-ROM into my computer's CD-ROM drive and the installation menu does not appear automatically. What should I do?

A1: If the installation menu does not appear automatically, click **Start**, click **Run**, and type **D:\Autorun.exe** where "D" in "D:\Autorun.exe" is the letter assigned to your computer's CD-ROM Drive. Then click **OK** to start the installation.

Q2: How can I get into the TEW-432BRP web configuration page?

A2: After you install the TEW-432BRP Wireless Router, you can access the web configuration page by opening your web browser and entering <http://192.168.10.1> into the web browser's address bar, where <http://192.168.10.1> is the default IP address of the TEW-432BRP Wireless Router. If you follow the installation instructions in section 3 for adding the router behind an existing 192.168.11.1 network, type in <http://192.168.11.1> into the web browser's address bar. The default user name and password is admin.

Q3: I am not sure what type of Internet Account Type I have for my Cable/DSL connection. How do I find out?

A3: Contact your Internet Service Provider's (ISP) Customer Service for the correct information.

Q4: I received an error while running the Install Wizard. What should I do?

A4: Make sure that your computer's CD-ROM is in working condition. Also verify that all cable connections are secure and that you are able to connect to the Internet, and then retry installing the router. During setup, the Install Wizard will check the operation of your network adapter and Internet connection.

Q5: All the settings are correct, but I can not make a wireless connection to the Router. What should I do?

A5: First, double check that the WLAN light on the Router is lit. Second, power cycle the TEW-432BRP. Unplug the power to the TEW-432BRP. Wait 15 seconds, then plug the power back in to the TEW-432BRP. Third, log into the TEW-432BRP by entering <http://192.168.10.1> into the web browser's address bar. If you follow the installation instructions in section 3 for adding the router behind an existing 192.168.10.x network, type in <http://192.168.11.1> into the web browser's address bar. Click on **Wireless**. Make sure **Enabled** is selected. Fourth, contact the manufacturer of your wireless network adapter and make sure the wireless network adapter is configured with the proper SSID.

Q6: After I finish installing the router, Network Magic Installation Wizard appears. What should I do?

A6: Network Magic is an optional bonus program. It works with your router to setup, manage, repair and protect your home network. To install Network Magic, select **Install Network Magic**, click **Next** and then follow the Installation Wizard instructions. If you do not want to install Network Magic, select **Exit Router Setup** and then click **Finish**.

If you still encounter problems or have any questions regarding the TEW-432BRP, please refer to the User's Guide included on the Easy Go Setup CD-ROM or contact Trendnet's Technical Support Department.

Certifications

This equipment has been tested and found to comply with FCC and CE Rules.

Operation is subject to the following two conditions:

- (1) This device may not cause harmful interference.
- (2) This device must accept any interference received. Including interference that may cause undesired operation.



Waste electrical and electronic products must not be disposed of with household waste. Please recycle where facilities exist. Check with you Local Authority or Retailer for recycling advice.



NOTE: THE MANUFACTURER IS NOT RESPONSIBLE FOR ANY RADIO OR TV INTERFERENCE CAUSED BY UNAUTHORIZED MODIFICATIONS TO THIS EQUIPMENT. SUCH MODIFICATIONS COULD VOID THE USER'S AUTHORITY TO OPERATE THE EQUIPMENT.

ADVERTENCIA

En todos nuestros equipos se mencionan claramente las características del adaptador de alimentación necesario para su funcionamiento. El uso de un adaptador distinto al mencionado puede producir daños físicos y/o daños al equipo conectado. El adaptador de alimentación debe operar con voltaje y frecuencia de la energía eléctrica domiciliar existente en el país o zona de instalación.



Customer Support

Visit www.trendnet.com/support

Email:

support@trendnet.com



Europe (Germany • France • Italy • Spain • Switzerland • UK)

Toll Free Telephone: +00800 60 76 76 67

English/Espanol - 24/7

Francais/Deutsch - 11 am-8pm, Monday - Friday MET

Worldwide

Telephone: +(31) (0) 20 504 05 35

English/Espanol - 24/7

Francais/Deutsch - 11 am-8pm, Monday - Friday MET

Product Warranty Registration

Please take a moment to register your product online.

Go to TRENDnet's website at <http://www.trendnet.com/register>

TRENDnet[®]
20675 Manhattan Place
Torrance, CA 90501
USA