



Quick Installation Guide



TEW-429UB

Table of Contents

| | |
|---|---|
| Español | 1 |
| 1. Antes de iniciar | 1 |
| 2. Cómo se instala | 2 |
| 3. Cómo usar el adaptador inalámbrico | 5 |
| Troubleshooting | 6 |

1. Preparación para la instalación

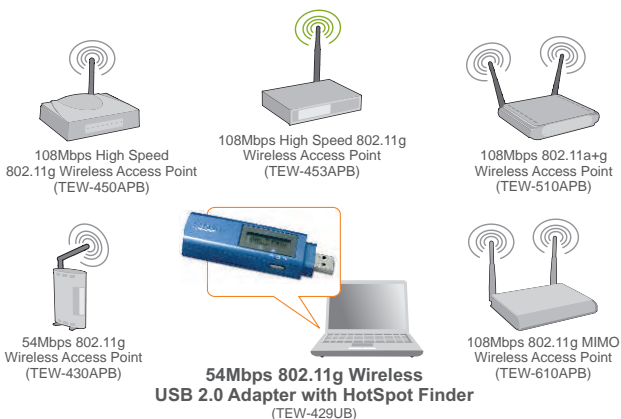


Contenidos del paquete

- TEW-429UB
- CD-ROM del controlador y la herramienta
- Guía de instalación rápida

Requisitos del sistema

1. Un PC habilitado para USB
2. Un procesador de 300 MHz y 128 MB de memoria (Recomendado)
3. Un mínimo de 20MB de espacio en disco duro
4. Una unidad de CD-ROM
5. Un Punto de Acceso 802.11b o 802.11g (para Modo de Infraestructura) u otro adaptador inalámbrico 802.11g (para un modo de red Ad-Hoc o Usuario a Usuario).
6. Windows 98SE/ME/2000/XP



— detected — connected

*Laptop/PC is not required to detect HotSpots

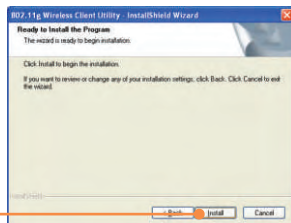
2. Cómo se instala

Nota: No conecte el adaptador inalámbrico USB a su PC hasta que haya instalado esta herramienta

1. Introduzca el CD de instalación en la unidad de CD-ROM y haga clic en **Install Utility (Herramienta de instalación)**.

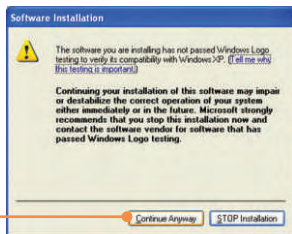


2. Haga clic en **Next (Siguiete)** para cada paso de la instalación, y después haga clic en **Install (Instalar)**.

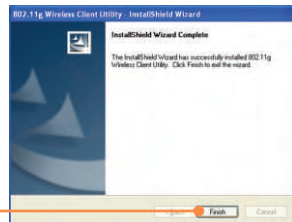


Nota: Los Adaptadores Inalámbricos de TRENDnet han sido examinados en su totalidad para su compatibilidad con los Sistemas Operativos de Windows y han sido aprobados para su funcionalidad.

3. Haga clic en **Continue Anyway** (Continuar de todas formas) o en **Yes (Sí)**.



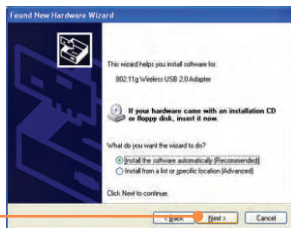
4. Haga clic en **Finish (Finalizar)**.



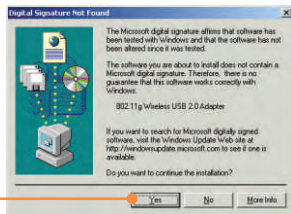
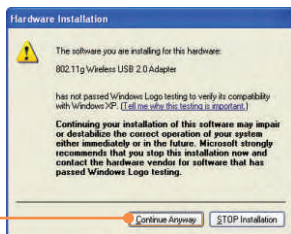
5. Conecte el adaptador USB inalámbrico TEW-429UB al puerto USB de su PC.



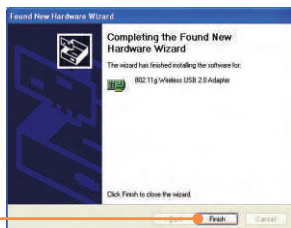
6. Haga click en **Next (Siguiete)**.



7. Haga clic en **Continue Anyway** (Continuar de todas formas) o en **Yes (Sí)**.



8. Haga clic en **Finish (Finalizar)**.

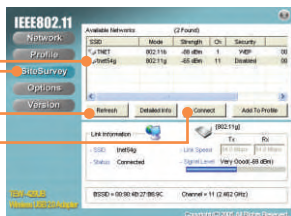


3. Cómo usar el adaptador inalámbrico

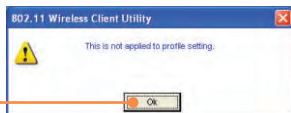
1. Haga doble clic en el icono inalámbrico del PC en la bandeja del sistema .



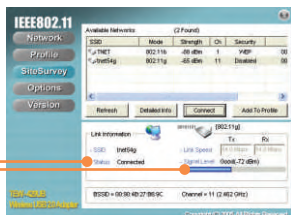
2. Haga clic en **Site Survey** (Inspección del sitio), luego pulse **Refresh** (Refrescar) y después seleccione el punto de acceso deseado. Haga clic en **Connect** (Conectar).



3. Haga clic en **OK**.



4. Compruebe el estatus de su conexión.



La instalación ha sido completada

Nota: Para más detalles sobre las características avanzadas, por favor consulte la Guía del Usuario.

Q1: I completed all the steps in the quick installation guide, but my wireless USB Adapter isn't connecting to my access point. What should I do?

A1: First, you should verify that the Network SSID matches your wireless router or access point's SSID. Second, you should check your TCP/IP properties to ensure that Obtain an IP address automatically is selected. Third, you can click on the Site Survey link to check and see if there are any available wireless networks listed.

Q2: Windows is unable to recognize my hardware. What should I do?

A2: Make sure your computer meets the minimum requirements as specified in Section 1 of this quick installation guide. Also, you must install the wireless configuration utility (as described in Section 2) before connecting the wireless USB Adapter.

Q3: I cannot open the wireless configuration utility. What should I do?

A3: Go to your device manager (control panel → system) to make sure the adapter is installed properly. If you see a networking device with a yellow question mark or exclamation point, you will need to reinstall the device and/or the drivers.

If you still encounter problems, please refer to the User's Guide CD-ROM or contact technical support.

Certifications

This equipment has been tested and found to comply with FCC and CE Rules. Operation is subject to the following two conditions:

- (1) This device may not cause harmful interference.
- (2) This device must accept any interference received.
Including interference that may cause undesired operation.



NOTE: THE MANUFACTURER IS NOT RESPONSIBLE FOR ANY RADIO OR TV INTERFERENCE CAUSED BY UNAUTHORIZED MODIFICATIONS TO THIS EQUIPMENT. SUCH MODIFICATIONS COULD VOID THE USER'S AUTHORITY TO OPERATE THE EQUIPMENT.



TRENDnet

TRENDnet Technical Support

US/Canada Support Center

Contact

Telephone: 1(866) 845-3673

Email: support@trendnet.com

Tech Support Hours

24/7 Toll Free Tech Support



European Support Center

Contact**Telephone:**

Deutsch : +49 (0) 6331 / 268-460

Français : +49 (0) 6331 / 268-461

0800-90-71-61 (numéro vert)

Español : +49 (0) 6331 / 268-462

English : +49 (0) 6331 / 268-463

Italiano : +49 (0) 6331 / 268-464

Dutch : +49 (0) 6331 / 268-465

Fax: +49 (0) 6331 / 268-466

Tech Support Hours

8:00am - 6:00pm

Middle European Time

Monday - Friday

Product Warranty Registration

Please take a moment to register your product online.

Go to TRENDnet's website at <http://www.trendnet.com>

TRENDnet

3135 Kashiwa Street

Torrance, CA 90505

USA